

FACULTY AND ADMINISTRATION

(AS OF JANUARY 1, 1974)

CAMPUS DESIGNATION

CC — CUMBERLAND CAMPUS
DC — DOWNTOWN CAMPUS
DA — DISTRICT ADMINISTRATION
NC — NORTH CAMPUS
SC — SOUTH CAMPUS

ADAMS, EDNA B. B.S., Georgia College; M.A., Ed.S., University of Florida	Communications	CC
ALFORD, JAMES D. B.S., Tuskegee Institute; M.Ed., Florida A&M University	Director, Industrial and Trade Education	NC
ALLEN, ELEANOR C. B.A., The College of William and Mary in Virginia; M.F.A., The George Washington University	Art	SC
ALLEN, WALTER G., JR. B.S., Auburn University; M.B.A., University of Florida	Business	CC
ALTHOFF, F. DANIEL B.A., Florida State University; M.Ed., University of Florida	High School Credit (Social Science)	DC
ANDERSON, PATRICK R. B.A., Furman University; M.Div., Southwestern Baptist Theological Seminary; M.A., Sam Houston State University	Criminal Justice	SC
ARCURI, THOMAS B.S., M.Ed., University of Florida	Business	SC
ARNOLD, CARROLL E. B.F.A., University of Georgia; M.F.A., University of Texas at Austin	Communications	SC
AXELBERG, ANNE E. B.S., Rutgers University	High School Credit (Mathematics)	DC
BADGER, SOLOMON L. III B.S., M.Ed., Florida A&M University	Counselor	SC
BAILEY, CLARE C. B.S., M.S., Ph.D., University of Florida	Biological Sciences	NC
BAILEY, WILLIAM F. B.S., Concord (W. Va.) State College; M.A.T., University of North Carolina at Chapel Hill	Physical Science	SC
BAIN, MARCIA J. B.A., M.A., Georgia State University	Mathematics	NC
BAKER, MARTINEZ	Director, Plant Operations	DA
BALLARD, FRANCIS B. B.S., M.S., Illinois State University	Business	NC
BANICKI, ALOIS J. B.S., Western Michigan University; M.A., Eastern Michigan University	Communications	SC

Constitution and its historic background, the organization of local, state, and federal governments; to promote understanding and appreciation for ideals, privileges and responsibilities of democratic citizenship; and to prepare individuals for the examination administered by immigration and naturalization authorities.

HIS 010—Problems of Democracy

Materials covered in this course show how and why the historical problems are vital in contemporary thinking.

HIS 020—World History

A survey of European and Asiatic History. Explains the world today by showing the political, economic, and social development in the United States from Colonial days to present.

HIS 084—American History

Emphasis is placed on political, economic, and social development of the United States from Colonization to the present.

HMG—HOMEMAKING (COMPREHENSIVE)

HMG 001—Vocational Homemaking

Includes home management problems, delegation of responsibilities, and action to take in emergencies.

HOL—HOTEL AND LODGING

HOL 001—Hotel-Motel Management

This is an orientation course for persons not pursuing a degree program. Includes supervision of employees, organization, catering and sales departments, and front office procedures.

HOL 002—Apartment Management

This course is designed to cover all aspects of apartment management. It includes such topics as manager qualifications, selling apartment living, social and recreational activities within the apartment, lease agreements, terminations and collections, record keeping, security, maintenance and repair. This is a ten week course, meeting one night a week for three hours.

HOL 011—Hotel-Motel Front Office Procedures

This is a course designed for persons not pursuing a degree program. Provides training in the use of posting machines and in all procedures for registering and rooming guests, recording charges and credits, checkouts, and performing the night audit.

HOL 040—Executive Housekeeping

This course develops leadership and organizational ability for supervisory personnel responsible for maintaining an establishment in a clean, orderly, and attractive manner. It includes the basic technical knowledge essential to the position.

HOL 061—Introduction to Hospitality Management

Traces the growth and development of the lodging industry from early times to modern skyscraper hotels and highway motels; the organization of hotel operations; opportunities and future trends. A survey course for persons considering hotel-motel management as a career. Six to eight week course.

HOM—HOME MANAGEMENT

HOM 005—Management and Family Economics

This course is planned for the homemaker or potential homemaker. The purpose of the

BORDEAUX, RICHARD H. B.A., M.A., Florida State University	Communications	CC
BORDEN, JUNE C. B.S.N., M.S.N., University of Alabama	Nursing	NC
BOSWELL, ERNESTINE D. B.S., Tuskegee Institute; M.S., Florida State University	Nursing	NC
BOUCHER, FREDERICK H. B.A., Tulsa University; M.A., Teacher's College, Columbia University; M.Ed., University of Florida	Physical Science	SC
BOUCHER, SARA P. B.A., Lake Forest College; M.A.T., Jacksonville University	Humanities	SC
BOWMAN, LUTHER J., SR. A.B., Indiana University; M.A.E., University of Florida	Mathematics	CC
BOYLES, BILLY O. B.A., University of Texas at El Paso; M.J., University of Texas at Austin	Associate Director, Information Services and Publications	DA
BRADFORD, BARBARA R. B.S., Florida State University; M.Ed., University of Florida	Secretarial Science	SC
BRATCHER, HAROLD L. Vocational Certificate, State of Florida	Building Maintenance Mechanics	DC
BRICKELL, GRANT R. B.E., Western Illinois University; M.S., Purdue University	Communications	SC
BRINKLEY, GLORIA J. B.S., Stetson University; M.A., Presbyterian School of Christian Education	Business	NC
BRINKLEY, HARRY J. B.S.A., M.S.A., University of Florida	Biological Science	CC
BROWN, DANIEL D. B.S., University of Maryland; M.Ed., Ed.S., University of Florida	Social Science	SC
BROWN, MARIAN T. A.B., Bennett College; M.M.E., Indiana University	Humanities	SC
BROWNETT, THELMA D. B.F.A., Wesleyan Conservatory, Macon, Georgia; M.F.A., University of Georgia	Art	SC
BROWNING, THOMAS G. B.S.B.A., M.Ed., University of Florida	Director, Business Related Programs	NC
BRUCE, JOHNNY W. B.S.E., M.S.E., Arkansas State University	Biological Science	CC
BRYANT, EZEKIEL W. B.S., Bethune-Cookman College; M.Ed., Boston University	Director, Adult Basic Education	DC
BULLARD, WILLIE B.S., Bethune-Cookman College	High School Credit (Social Science)	DC
BURROWS, WILLIAM D. B.M.F., University of Florida; M.A., University of Iowa	Data Processing	NC
BURT, JOE E. B.M., Samford University; M.M., Northwestern University	Humanities	SC

CACCIOLA, ROSEANN M.	Division Chairman, Communications, Fine Arts and Humanities B.A., Tennessee Wesleyan College; M.A., Ph.D., Vanderbilt University	SC
CALDWELL, JOSEPH H.	Dean, Student Development B.S., M.S., Florida State University; Ed.S., University of Florida	SC
CALLENDER, JAMES M.	Assistant to the Vice President for Campus Operations A.A., Lamar University; B.S., United States Naval Academy; M.S., The George Washington University; Ph.D., University of Florida	DA
CARMICHAEL, BOBBY J.	Business B.B.A., Eastern New Mexico State University; M.B.A., University of Arkansas	SC
CARTER, BETTY A.	Developmental Education B.A., Goucher College; M.Ed., University of Florida	SC
CASWELL, CHARLOTTE Y.	Librarian B.A., Jacksonville University; M.Ed., University of Florida	CC
CHANDLER, GWENDOLYN J.	Librarian B.S., Alabama State University; M.S., Catholic University of America	SC
CHRISTOPHER, MILDRED M.	High School Review B.S., Edward Waters College	DC
CHRISTOFOLI, LUTHER B.	Dean, Academics A.B., Newberry College; M.A., Auburn University; Ed.D., University of Florida	SC
CLELAND, JAMES M.	Division Chairman, Academics B.S., Presbyterian College; M.S., Clemson University	DC
CLELAND, SHARON E.	Communications B.S., M.S., University of Tennessee at Knoxville	NC
COBB, ELIZABETH M.	Director, High School Completion and Equivalency B.S., Edward Waters College; M.Ed., Florida A&M University	DC
CONRAD, CRAIG M.	Physical Science B.A., M.A., University of South Florida	SC
COOK, LENDA H.	Biology B.S., West Texas State University; M.A.T., University of North Carolina at Chapel Hill	NC
CORBITT, SARAH C.	High School Credit (Natural Science) B.S., M.S., Florida A&M University	DC
CORDIER, DOUGLAS C.	Physical Education B.S., M.A., Eastern Kentucky University	NC
COSEY, JON P.	Dean, Academics B.A., M.S., Western Kentucky University	NC
COTTON, H. D.	Dean, Student Development B.S., Florida Southern College; M.A., Middle Tennessee State University; Ed.D., University of Alabama at Tuscaloosa	NC
COULSON, DONNA C.	Librarian B.A., King College; M.S., Florida State University	CC
COX, FERNESTINE B.	Adult Basic Education B.S., M.Ed., Florida A&M University	DC
CROCKETT, JIMMY R.	Physical Science B.S., Florence State University; M.A., Middle Tennessee State University	SC

CRUSE, VERA W. Diploma, Brewster Hospital School of Nursing, Jacksonville, Florida	Nursing	NC
CRUTCHFIELD, FLORENCE P. A.B., University of North Carolina at Chapel Hill	High School Credit (Mathematics)	DC
CUSACK, JOSEPH B. III B.S., East Tennessee State University; M.A., Appalachian State University	Associate Dean, Career and Adult-Continuing Education	DA
DANIEL, JOAN M. B.A., Morris Brown College	High School Credit (English)	DC
DANIEL, JR., RALPH C. B.A., M.A., University of South Florida	Counselor	NC
DAVID, JAMES B. B.S.Ch.E., M.S., University of Florida	Physical Science	NC
DAVIDSON, DAVID L. B.A.Ed., M.Ed., University of Mississippi	Social Science	CC
DAVIS, BARBARA G. B.S.N.Ed., DePaul University; M.S., Case-Western Reserve University	Nursing	NC
DAVIS, ELIZABETH W. B.S., Florida State University	Home Economics	CC
DAVIS, ILLIAN G. B.S., Florida A&M University	Adult Basic Education	DC
DAWSON, WANDA E. B.A., Bethune-Cookman College; M.A., Florida State University	Communications	CC
DeGOURSEY, LEO R. Vocational Certificate, State of Florida	Printing and Graphic Arts	NC
DENMARK, ILER D. B.D., Southern Baptist Theological Seminary; B.B.A., Georgia State University	Director, Internal Accounting	DA
DENSON, WILLIAM H. III B.A., Florida State University; M.S., University of Southern Mississippi	Communications	NC
DeSIMONE, MARILYN N. B.A., Stetson University; M.A.T., Jacksonville University	Communications	CC
DETERS, MARCELLA D. B.S., State University of New York College at Cortland; M.A., Teacher's College, Columbia University	Physical Education	SC
DICE, JAMES V. II B.A., Baylor University; M.Ed., University of Florida	Child Care Services	NC
DIFFIE, GRANVILLE P. B.S., University of Maryland; M.Ed., Ed.S., Ed.D., University of Florida	Psychology	CC
DIGGETT, HAROLD W. Vocational Certificate, State of Florida	Air Conditioning, Refrigeration and Heating	NC
DODSON, HARRIETT Y. A.A., North Florida Junior College; B.A., M.A., Florida State University	Communications	CC
DOLLINGER, RICHARD E. B.S., United States Naval Academy; M.S., Florida State University	Director, Engineering Related Programs	NC
DOUGLASS, CHARLES G. B.A., Gettysburg College; M.A.T., Rollins College	Social Science	SC

DREHER, DEBORA A. B.A., M.A., New York University	Humanities	SC
DROST, KENNETH W. B.S., M.S., Louisiana State University and Agricultural and Mechanical College	Physical Education	SC
DRUM, JERRY B. B.A., Lenoir Rhyne College; M.A., Appalachian State University; Ed.D., University of Alabama at Tuscaloosa	High School Credit (Social Science)	DC
DUMBLETON, DUANE D. B.S., University of Wisconsin; M.A., Syracuse University; Ed.D., University of Georgia	Social Science	CC
DUNAGAN, MARIE E. B.S., M.S., Florida State University	Librarian	SC
DYER, JOHN L. B.S., Springfield College; M.S., Syracuse University	Business	SC
ELSON, HERMAN B.S., City College of New York; M.A., New York University	Mathematics	CC
ENG, CHOOHUA J. A.A., Hiwassee College; B.S., Tennessee Wesleyan College; M.M., University of Tennessee at Knoxville	Data Processing	NC
ERECKSON, HENRY J. B.S., United States Naval Academy; M.S.E.E., University of Pennsylvania; M.A.T., Jacksonville University	Engineering Related Programs	SC
ESKRIDGE, NORFLEET W. B.S., M.A., Appalachian State University	Physical Education	CC
EVANS, MORRIS L. B.S., Western Kentucky University; Ph.D., Virginia Polytechnic Institute and State University	Division Chairman, Natural Sciences, Mathematics and Physical Education	NC
EVERETT, INDINESE C Vocational Certificate, State of Florida	Cosmetology	CC
FARMER, JOHN E. B.A., M.Ed., University of Florida	Dean, Student Development	CC
FARRIS, JULIAN E. B.A., Jacksonville University; M.A., Florida State University	Humanities	SC
FEARS, RUBEL G. B.A., M.A., Mississippi State University	Communications	NC
FEIGENBAUM, JEAN P. B.A., M.S., University of Southern California	Distributive and Mid-Management	CC
FELDSTEIN, CHARLES R. A.B., East Carolina University; M.Ed., University of Georgia	Communications	NC
FINCH, OLIVER R. B.S.E., Georgia Southern College; M.A., George Peabody College for Teachers; Ed.D., University of Alabama at Tuscaloosa	Provost	NC
FISHER, LINDA M. A.B., Wheaton College; M.A., Boston University	Humanities	CC
FITZGERALD, EDWARD E. B.A., M.S., Louisiana State University and Agricultural and Mechanical College	Director, Learning Resources	CC
FLEMING, HARRY E. B.S., M.S., University of Southern Mississippi	Social Science	SC

FLYNN, AUDREY L. B.S., M.A., Florida State University	Child Care Services	NC
FRIEDMAN, MARSHALL R. B.S., University of Pennsylvania; M.Ed., Ed.S., University of Florida	Business	SC
FRITTS, MILDRED F. B.A., Auburn University; M.A.T., Jacksonville University	Communications	NC
FROBERG, JAMES W. B.S., M.S., Florida State University	Librarian (Media)	SC
GAGLIARDI, HENRY M. B.S., St. Louis University; M.S., Florida State University; D.D.S., St. Louis University	Director, Dental Programs	NC
GALLON, DENNIS P. B.S., Edward Waters College; M.S., Indiana University	Business Education	CC
GARRETT, ROBERT I., JR. B.S., Middle Tennessee State University; M.A., George Peabody College for Teachers	Social Science	SC
GAY, ELEANOR J. B.S., M.A., Florida A&M University	Counselor	NC
GEIGER, CHERYL J. B.A., Malone College; M.S., Western Kentucky University	Chemistry	NC
GENTRY, ROBERT B., JR. B.S., M.A., University of Tennessee at Knoxville	Division Chairman, Academics	CC
GESELL, RICHARD C. M.A.T., Rollins College; J.D., University of Wisconsin at Madison	Business	SC
GIBSON, LOIS D. B.S., Tuskegee Institute; M.S., Boston University	Nursing	NC
GIMBEL, RICHARD W. A.B., Princeton University; M.A., Middlebury College	Humanities	NC
GIRARDAU, MATILDA L. B.S., North Carolina College; M.A.T., University of North Carolina at Chapel Hill	Biological Science	NC
GLEIM, JAMES K. A.B., Indiana University; M.A., Georgetown University; Ph.D., University of Pennsylvania	Physical Science	CC
GODFREY, IONA H. B.S., Edward Waters College	Child Care Services	NC
GOLIGHTLY, THELMA E. A.B., Mary Baldwin College; M.A., University of Wisconsin at Madison	Communications	NC
GOOCH, ANN M. B.M.E., Florida State University; M.Ed., University of Florida	Humanities	NC
GRANLUND, ROY D. B.S., Jacksonville University; M.Ed., University of Florida	Mathematics	SC
GRANT, ALICE W. A.B., M.Litt., University of Pittsburg; Certificate in African Studies, Northwestern University	Developmental Education	NC
GRANT, ANTONIA M. B.A., Florida A&M University; M.A., Florida State University	Communications	SC
GRAY, HORTENSE W. B.A., Fisk University; M.A., Columbia University	Counselor	CC

GREEN, JULIUS C.	Director, Information Services and Publications	DA
A.B., University of North Carolina at Chapel Hill		
GREEN, KIPTAS L.	Counselor	DC
B.S., Edward Waters College; M.A., Florida A&M University		
GREEN, LAWTON R.	Philosophy	CC
B.S., M.A., Florida State University		
GREENE, CURTIS P.	Psychology	NC
B.S., M.A., Ball State University		
GREENMAN, GENE B.	Nursing	NC
Diploma, St. Luke's Hospital School of Nursing, Jacksonville, Florida		
GREER, ELLA M.	Nursing	NC
A.S., Louisburg College; B.S.N., Duke University; M.S., Florida State University		
GRIEGER, EDWARD L. III	Business	NC
B.S., Michigan State University; M.B.A., Florida Atlantic University; M.S., Wayne State University		
GRIFFEY, ELIZABETH B.	Communications	SC
B.A., Florida State University; M.A., Arizona State University		
GRIFFEY, LARRY R.	Mathematics	SC
B.A., M.A., Austin Peay State University		
GRIFFIN, SEVIER P. III	Director, Downtown Center	DC
B.S.P.E., M.P.H., University of Florida		
GRIMES, THEODORE R.	Librarian	NC
B.M., Eastman School of Music, University of Rochester; M.L.S., Syracuse University		
GRISWOLD, ARDIS G.	Nursing	NC
Diploma, St. Alphonsos Hospital School of Nursing, Boise, Idaho		
GROTZ, RACHAEL E.	Spanish	SC
B.A., Southwestern at Memphis; M.A., Florida State University		
GUSKY, FRANK C.	High School Credit (Social Science)	DC
A.B., Findlay (Ohio) State College; M.Ed., University of Florida		
HADWIN, ALICE R.	Counselor	NC
B.A., Saint Mary College, Xavier, Kansas; M.Ed., University of Florida		
HADWIN, DAN W.	Counselor	SC
B.A., Louisiana Tech University; M.Ed., University of Florida; M.Ed., Louisiana State University and Agricultural and Mechanical College		
HALL, DOLORES L.	Mathematics	NC
B.S., M.Ed., Florida A&M University		
HALL, JENE	Mathematics	CC
B.S.Ed., Louisiana Tech University; M.A., Louisiana State University and Agricultural and Mechanical College		
HAMMOND, CARRIE B.	Nursing	NC
Diploma, Brewster Hospital School of Nursing, Jacksonville, Florida		
HAMMOND, MARY M.	High School Credit (Reading)	DC
B.S., Florida Memorial College; M.Ed., Florida A&M University		
HANLEY, JAMES R., JR.	Physical Science	SC
B.S., University of Rhode Island; M.S., University of Illinois		
HANSEN, WILLIAM S.	Criminal Justice	SC
B.S., Indiana University		

HARDIN, PAULA B.	Nursing Diploma, The Good Samaritan Hospital School of Nursing, Lexington, Kentucky	NC
HARIMA, HECTOR	Biological Science B.S., M.S., Ph.D., University of Alabama at Tuscaloosa	SC
HARMAN, MARY P.	Psychology A.B., Marshall University; M.S., University of Tennessee at Knoxville	CC
HARPER, MARY L.	Home Economics B.S., Florida A&M University; M.S., Florida State University	DC
HARRIS, MYRTIS B.	Nursing B.S., Florida A&M University; M.S., Florida State University	NC
HART, SHERMAN C., JR.	Air Conditioning, Refrigeration and Heating Vocational Certificate, State of Florida; Diploma, Air Conditioning/Refrigeration, Florida Industrial Commission	DC
HARTSHORN, DAVID L.	Director, Student Financial Aid B.S., United States Naval Academy; M.A., The George Washington University	CC
HARTWELL, ROSANNE R.	Director, Continuing Education B.S., Florida State University; M.Ed., University of Florida	CC
HARWELL, DORIS B.	Child Care Services B.M.Ed., Longwood College; M.Ed., Presbyterian School of Christian Education	NC
HASKEW, DONALD C.	Mathematics B.S.E., State College of Arkansas; M.Ed., University of Arkansas	SC
HATCHER, HAROLD S.	Director of Payroll	DA
HAYNES, JOHN A.	Psychology B.A., M.Ed., University of Florida	SC
HAYNES, SUE C.	Communications B.A., North Texas State University; M.A., University of Utah	SC
HEATH, WILBUR G.	Developmental Education B.A., Atlantic Christian College; M.A., Appalachian State University	NC
HENDRICKS, VIRGINIA L.	High School Credit (English) A.B., University of Notre Dame; M.A., Case-Western Reserve University	DC
HILL, JONATHAN H.	Director, Student Activities B.S., Stetson University; M.Ed., Florida Atlantic University	NC
HODGKINS, H. B.	Director, Registration and Records B.A., M.Ed., University of Florida	DA
HOLLAND, EDNA A.	Communications B.A., M.A.T., Jacksonville University	SC
HOLMES, BILLIE J.	Adult Basic Education B.S., Edward Waters College; M.Ed., Florida A&M University	DC
HOOP, IRIS C.	Communications B.S., M.S., Indiana State Teachers College	CC
HOUGHTON, MICKIE J.	Nurse Assistant Diploma, St. Luke's Hospital School of Nursing, Jacksonville, Florida	NC
HOWARD, MARK S.	Fine Arts B.A., M.F.A., Florida State University	SC
HOWARTH, CHESTER D.	Director, Distributive and Mid-Management Education B.S., Massachusetts State Teachers College; M.S., Florida State University	CC

HOWELL, JOHN N. B.S., United States Military Academy; M.A., The George Washington University	Mathematics	CC
HUNSUCKER, DOROTHY L. A.S., Midlands Technical Education Center, Columbia, South Carolina; B.S., University of South Carolina	Dental Hygiene	NC
HUTCHINGS, PATRICIA W. A.A., Lake City Community College; B.S., M.A., Florida State University	Communications	NC
HUTCHINSON, JOHN M., JR. B.S.M.E., Auburn University; M.S., Florida State University	Engineering	NC
ISRAEL, KENNETH D. B.A., Berea College; M.A., George Peabody College for Teachers; Ph.D., University of Southern Mississippi	Social Science	SC
JACKSON, LUCINDA G. B.S., Edward Waters College; M.Ed., Florida A&M University	Psychology	CC
JACKSON, NORMAN B.S., Tuskegee Institute; M.A., Michigan State University; Ph.D., Florida State University	Assistant Director, Special Programs	DA
JAYASWAL, MANINDRA C. B.Sc., Allahabad (India) University; M.S., University of Florida	Chemistry	NC
JENKINS, ETHEL L. A.A., Jacksonville University; B.A., University of Florida; M.A., Appalachian State University	Psychology	SC
JOCA, JOHN G. B.S., M.A.Ed., University of Florida	Counselor	DC
JOHNSON, FRANK Vocational Certificate, State of Florida	Automotive Mechanics	DC
JOHNSON, INEY P. B.S., Jacksonville University; M.Ed., University of Florida	Division Chairman, Natural Science, Mathematics and Physical Education	SC
JOHNSON, MARY RUTH B.S., Tennessee Technological University; M.A., Appalachian State University	Counselor	NC
JONES, DAVID Q. B.A., Albion College; M.A., University of Michigan	Social Science	SC
JONES, EDNA M. B.S., Florida State University; M.S.N., University of Alabama	Nursing	NC
JONES, MARVIN M. B.S., M.S., Purdue University	Engineering	NC
JORDAN, ERNESTINE L. B.S., Florida A&M University	Business	DC
JORDAN, JABEZ M. B.S., University of Georgia	High School Credit (Science)	DC
KADEN, MAXINE M. B.A., Stetson University; M.Ed., University of Florida	Counselor	DC
KEENAN, HARRY C. B.A., University of Florida	Adult Basic Education	DC
KEHRT, IRENE M. B.A., Hunter College of the City University of New York; M.A., University of Michigan	Physical Education	CC

KELLY, JOSEPH D. B.S.E., M.A.E., Kent State University	High School Credit (English)	DC
KENNEDY, ROBERT A. A.B., Millsaps College; B.S., University of Alabama; M.A., George Peabody College for Teachers; Ed.D., Florida State University	Humanities	NC
KERLEY, DOUGLAS W. B.M., M.M., Florida State University	Music	SC
KEY, ERSKINE C. B.S., Troy State University; M.A., Ed.D., George Peabody College for Teachers	Social Science	SC
KILGORE, CHARLES F. B.A., Florida Christian College; M.A., University of Chattanooga; Ph.D., Emory University	Social Science	CC
KING, DOROTHY P. B.S., M.Ed., Florida A&M University	Biological Sciences	SC
KING, MABLE P. A.B., Johnson C. Smith University; M.Ed., Florida A&M University	Librarian	DC
KIRKLAND, ARTHUR C., JR. B.M.E., M.M.E., Florida State University	Music	SC
KITCHINGS, EARL S. B.S., Florida A&M University; M.A., Columbia University	Director, MDTA	DC
KOLESAR, JOHN C. B.S., St. Joseph's College, Rensselaer, Indiana; M.S., Southern Illinois University	Physical Science	NC
LANE, ROBERT W. B.S., University of Illinois; M.S., South Dakota School of Mines and Technology	Physical Science	SC
LANE, SARA L. A.B., Wesleyan College; M.Ln., Emory University	Librarian (Technical Services)	CC
LANKFORD, CAROL E. B.A., M.A.T., Jacksonville University	High School Credit (Social Science)	DC
LaPRADE, RAYMOND C. B.S., Florida State University	Engineering	NC
LARKINS, IRIS D. B.S., Edward Waters College; M.Ed., Florida A&M University	Adult Basic Education	DC
LATIMER, JOHNNIE, JR. A.B., Morehouse College; M.B.A., Atlanta University	Business	NC
LEE, ETHEL R. B.S., Duke University; M.A., Jacksonville University	Nursing	NC
LEE, MARY F. B.S., Jacksonville University; M.S., Florida State University	Librarian	DC
LEE, MAY F. B.S., Edward Waters College; M.A.T., Indiana University	Social Science	NC
LENNERTZ, MILDRED A. B.S.H.E., University of Georgia; M.Ed., University of Mississippi	Director, Home Economics Education	CC
LeVASSEUR, MICHAEL LEE B.A., M.A., University of South Florida	Social Science	NC
LILLY, FRANCES H. B.S., M.S., Florida State University	Nursing	NC

LISTER, HARRY M. B.A., Arkansas Polytechnic University; M.A., Texas Christian University	Social Science	SC
LLOYD, ROGER M., JR. B.S., East Tennessee State University; M.S., University of Mississippi	Biological Sciences	SC
LOCKETT, CORNELIUS R., JR. B.S., M.Ed., Florida A&M University	Assistant Director of Admissions	DA
LOFTUS, EDSON G. B.A., Jacksonville University; M.A.T., University of Montevallo, Montevallo, Alabama	Physics	NC
LOFTUS, JOHN R., SR. B.S., Florida State University; M.Ed., Ed.S., University of Mississippi	Associate Dean, Career and Adult-Continuing Education	DC
LUBAS, HELEN S. B.S., M.S., Florida State University	Nursing	NC
LUCK, CAROLYN E. B.S., M.Ed., University of Florida	Director of Records	DA
LUTZ, JUDITH G. B.A., University of Florida; M.C.Ed., Presbyterian School of Christian Education	Director, Child Care Services	NC
LYNCH, LINDA K. B.A., Florida Southern College; M.S., Louisiana State University and Agricultural and Mechanical College	Librarian	NC
LYONS, WILLIAM E., SR. B.A., Harvard University; M.A., University of Florida	Distributive and Mid-Management Education	CC
MAAFO, GLADYS L. B.S., North Carolina College	Nursing	NC
MacDONALD, JOHN M. B.S., M.A., East Tennessee State University	Communications	CC
MALLORY, ESCHOL M. B.S., M.Ed., University of Florida	Chemistry	NC
MALLOY, RACHEL H. B.S., Edward Waters College; M.Ed., Florida A&M University	High School Credit	NC
MARTIN, WILLIAM S., JR. B.S., William Carey College; M.A., University of Southern Mississippi	Social Science	SC
MARVES, RAYMOND C. B.S., Georgia Southern College; M.S., Florida State University	Accounting	CC
MATHAS, VIRGINIA A. B.S.N., Boston College; M.S.N., Catholic University of America	Nursing	NC
MAYES, JIM L. B.A., M.A., University of Arkansas	Social Science	CC
McBRIDE, LUELLA W. B.S., M.Ed., Florida A&M University	Counselor	SC
McBRIDE, RICHARD B.S., Florida A&M University; M.Ed., Florida State University	Automotive Mechanics	DC
McCANDLESS, MARY R. B.S., M.Ed., Ohio State University	Director of Nursing	NC
McCARVER, LAVERNE C. B.S., Jacksonville University	High School Credit (Social Science)	DC

McCLURE, SARAH E. A.S., Florida Junior College at Jacksonville	Medical Assistant	NC
MCCORMACK, DORIS V. B.S.E., M.S.E., Arkansas State College	Business	NC
MCCOY, PAUL O. B.S., Kansas State Teachers College; M.S., Louisiana State University and Agricultural and Mechanical College	Director, Program for the Aging (OPUS)	DC
MCCURLEY, LYNDE E. B.S.E., Bethel College; M.S.E., Arkansas State University	Physical Education	SC
MCDONALD, MARYANNA S. B.S.C., M.Ed., University of Mississippi	Counselor	CC
McELREATH, SUSAN D. A.B., Wesleyan College; M.S., Georgia State University	Biological Sciences	NC
McFARLAND, BILL W. B.A., M.A., University of Arkansas	Director of Admissions	DA
McGRATH, WILLIAM F. B.S.E.E., United States Naval Post Graduate School; B.S.M.E., Auburn University; M.A.T., Jacksonville University	Mathematics	SC
McMILLAN, PAUL M. B.A., M.A., East Texas State University	Social Science	NC
MELLIN, HARRY S. B.S., Purdue University; M.A., Ball State University	Mathematics	NC
MERRIAM, CHARLES S. B.S., M.S., Florida State University	Dean, Career Education	SC
MILLER, KERMIT C. B.A., M.Ed., Ph.D., University of Mississippi	Provost	SC
MILLER, CARL K., JR. B.S., M.S., Pennsylvania State University; Ed.D., Florida State University	Dean, Career Education	CC
MILLER, LILLIAN W. B.S., East Carolina University; M.S., Ph.D., Purdue University	Biological Sciences	SC
MILLS, ERIC R., JR. B.S.A., University of Florida; M.B.A., University of Mississippi; Ed.S., Ed.D., University of Florida	Dean, Career and Adult-Continuing Education	DA
MINOGUE, BERNARD B. B.S., University of Connecticut; B.S.N., Texas Christian University; M.Ed., Ed.D., North Texas State University	Emergency Medical Technology	NC
MOLEND, JOSEF L. B.A., M.A., Marquette University	Communications	CC
MONTS, LARRY H. B.S., Newberry College; M.A., George Peabody College for Teachers	Physical Education	CC
MOORE, CAROL S. B.S.P.E., M.A., University of Mississippi	Communications	SC
MORAN, EMMA L. B.S., West Virginia State University; M.A., New York University	Business	SC
MORELAND, HENRY L. B.S., Pembroke State University, Pembroke, North Carolina; M.S., Purdue University; Ed.D., University of Mississippi	Psychology	CC

MORRIS, JOSEPH W.	Social Science	CC
A.A., Chipola Junior College; B.A., M.S., Florida State University		
MOSS, BEVERLY C.	Psychology	NC
B.S., Western Carolina University; M.A., Duke University		
MULLINS, JOHN Q.	Biological Science	SC
B.S., M.S., University of Tennessee at Knoxville		
MUNDELL, RALPH P.	Industrial and Trade Education	NC
Vocational Certificate, State of Florida		
MURRAY, BOBBIE L.	Physical Science	CC
B.S., Florida State University; M.S.E., University of North Carolina at Chapel Hill		
MURRAY, CHARLES L.	Business Education	SC
B.S., M.Ed., University of Florida		
MYERS, JAMES R.	Industrial and Trade Education	NC
B.A., Jacksonville University; M.S., Florida State University		
NAPIER, EDGAR C.	Provost	CC
B.S., William Carey College; M.C.S., Ed.D., University of Mississippi		
NELSON, GREGORY B.	Business Education	SC
B.S., Jacksonville University; M.S., Florida Institute of Technology		
NesSMITH, WILLIAM C.	Social Science	NC
B.S., M.Ed., University of Florida		
NEZZO, BARBARA A.	Librarian	CC
B.A., College Misericordia, Dallas, Pennsylvania; M.L.S., University of Pittsburgh		
NICHOLSON, ROSE M.	Business	SC
A.A., Sante Fe Community College; B.S., University of Florida; M.B.A., University of North Florida		
NORRIS, JAMES S.	Business	NC
B.A., Pennsylvania State University; M.A.T., Jacksonville University		
OLSON, SHARON L.	Biological Sciences	NC
B.S., Northern Michigan University; M.A., Western Michigan University		
OWEN, HAROLD JAMES, JR.	Vice President for Campus Operations	DA
B.A., M.A., State University of New York at Albany; Ph.D., University of Georgia		
OWENS, DORA S.	Cosmetology	CC
Vocational Certificate, State of Florida		
PAASCHE, HELEN D.	Surgical Technician	NC
Diploma, St. Luke's Hospital School of Nursing, Jacksonville, Florida		
PADGETT, WAYNE R.	Social Science	CC
B.S., M.A., Austin Peay State University; Ed.S., University of Florida		
PALLISTER, CLARA M.	Communications	SC
B.A., M.A., University of Georgia		
PARK, ALLEN G.	Mathematics	CC
B.S., University of Georgia; M.A., University of Alabama at Tuscaloosa		
PARSONS, PERCY L.	Counselor	DC
B.S., M.Ed., Florida A&M University		
PATTERSON, ELISE	Business	CC
B.S., Massachusetts State College at Salem; M.A., Clark University, Worcester, Massachusetts		

PATTERSON, GERALD R. B.S., M.A., University of Kentucky	Counselor	NC
PATTON, JON W. B.A., Jacksonville University; M.A., University of Tennessee at Knoxville	Humanities	NC
PAULK, JAMES G. A.B., Jacksonville University	Fire Science	SC
PEREZ, RICARDO D.J., University of Havana, Cuba; M.A., Ph.D., University of Florida	Fine Arts	SC
PERRY, ROBERT A. Vocational Certificate, State of Florida	Gasoline Engine Repair	DC
PETERSON, JOHN W. B.A., Florida Atlantic University; M.A., Appalachian State University	Director, Learning Resources	NC
PLYMALE, JOHN R. B.A., Marshall University; M.S., University of Alabama	Biological Sciences	SC
POLK, CHARLES H. B.S., M.A., Stephen F. Austin State University; Ed.D., North Carolina State University at Raleigh	Dean, Downtown Campus	DC
POLLARD, ROBERT M. B.A., M.A.T., Jacksonville University	Communications	SC
POOLEY, ROBERT N. B.A., M.S., University of Wisconsin	Physical Science	CC
POWERS, STEPHEN E. IV B.A., Rollins College; B.A., Southern Missionary College; M.A.T., Andrews University, Berrien Springs, Michigan	Mathematics	NC
PREUSS, DOROTHY M. B.A., Colorado State College of Education; M.Ed., Oregon State University	Director, Student Activities	SC
PRICE, STEWART W. A.A., Florida Junior College at Jacksonville; Vocational Certificate, State of Florida	Construction Electricity	DC
RAINEY, ROBERT R., JR. B.A., Carson-Newman College; M.A., East Tennessee State University	Psychology	SC
RAULERSON, MARIAN P. B.A., Clarke College, Dubuque, Iowa; M.A., Loyola University	Mathematics	SC
RAY, RUTH G. B.S., Tuskegee Institute; M.A., Hampton Institute	Counselor	DC
REED, ELIZABETH C. B.A., Arkansas State Teachers College; M.A., University of Arkansas	Communications	SC
REED, CHARLES E., JR. B.A., Arkansas State Teachers College; M.A., University of Florida	Communications	SC
REESE, RUTH C. A.B., Hunter College of the City University of New York; M.Ed., University of Florida	Home Economics	CC
REHKOPF, WENDELL P. B.S., Michigan State University; M.Ed., University of Florida	Business	DC

RESPESS, RICHARD D. B.I.E., Georgia Institute of Technology; M.S., Florida State University	Dean, Career Education	NC
REYNOLDS, FRED C. A.A., St. Johns River Junior College; B.A., M.Ed., University of Florida	Communications	SC
RICE, RAY C. B.S., Lander College	Home Economics	CC
RICHBURG, JAMES R. B.S., M.A., Ed.D., University of Georgia	Division Chairman, Social Sciences and Interdisciplinary Studies	SC
RINAMAN, LANA G. B.S., M.S., Arkansas State University	Developmental Education	SC
ROBBINS, GAY S. B.A., Centre College of Kentucky; M.A.T., Rollins College	Communications	CC
ROBERTSON, DONALD P. B.A., Rensselaer Polytechnic Institute	Director, Computer Services	DA
ROBERTSON, RICHARD D. B.S., Syracuse University; M.B.A., The George Washington University	Data Processing	NC
ROBISON, PATRICK L. B.A., M.A., Western Kentucky University	Counselor	NC
ROEY, HOWARD C. B.S., Jacksonville University; M.A., Appalachian State University	Physical Education	NC
ROOD, HOLLAND W. B.S., Clarkson College of Technology; M.S., State University of New York at Albany	Engineering	SC
RORER, SALLY M. B.A., Lynchburg College; M.S., University of Tennessee at Knoxville	Physical Education	NC
ROSENBERRY, BASIL D. B.S., M.Ed., St. Bonaventure University	Mathematics	SC
ROSSIE, NEWMAN A. B.A., M.A., Mississippi State University	Social Science	SC
ROURKE, ANNE B. B.A., M.A., Jacksonville University	Reading	DC
RUPP, KEITH C. Vocational Certificate, State of Florida	Industrial and Trade Education	NC
RUSSELL, CARETA R. B.S., Savannah State College; M.Ed., Florida A&M University	Communications	SC
RUSSOS, MILTON A. A.A., Indian River Community College; B.A., M.Ed., University of Florida	Director, Student Activities	CC
RUTLEDGE, AUSTIN M., JR. B.A., Stetson University	Director of Procurement	DA
SAADEH, MARY A. B.S., East Carolina University; M.S., University of Tennessee at Knoxville	Home Economics	CC
SAARE, ELMORE J. B.S., Bradley University; M.A., University of Florida	Special Project Coordinator	CC
SANFORD, ROBERT M. B.A., M.A., University of Florida	Dean, Academics	CC
SASSER, JOSEPH H. B.A., Jacksonville University; M.A., Florida State University	Social Science	CC

SAWYER, MARJORY H. A.B., Berea College; M.Ed., University of Florida	Business Education	DC
SCHAEFER, MARTHA G. B.A., M.A., University of Florida	Communications	NC
SCHENKEL, GILBERT J. B.S., University of Florida; M.S., Florida State University	Business Manager	NC
SCHICK, FRANK J. B.S., Auburn University; M.A., University of Alabama	Counselor	CC
SCHOMBERG, ORVILLE C. B.S., Colorado State University; M.S., Oklahoma State University; M.A., Colorado State College	Psychology	CC
SCHUPP, JULIA M. B.A., M.Ed., University of Florida	Humanities	CC
SCHROEER, HOWARD J. B.S., Mankato State College; M.Ed., University of Florida; Ph.D., University of Alabama at Tuscaloosa	Director, Physical Facilities Planning	DA
SCOTT, WILLIAM, JR. B.S., Florida A&M University; M.A., Columbia University	Dean, Adult-Continuing Education	SC
SEITNER, ALFRED J. A.B., Dartmouth College; M.C.S., Amos Tuck School of Business Administration, Dartmouth College	Distributive and Mid-Management Education	CC
SESSIONS, BETTYE J. B.A., Florida A&M University; M.A.T., Jacksonville University	Humanities	CC
SHANNAHAN, MARY K. B.S., D'Youville College; M.A., University of Florida	Nursing	NC
SHEA, LOUISE C. A.B., B.S., College of St. Rose, Albany, New York; M.A., Teacher's College, Columbia University	Nursing	NC
SHERIDAN, CHARLES L. A.B., Elon College; M.A., University of North Carolina at Chapel Hill	Biological Sciences	NC
SHERIDAN, RUBY M. B.S., M.Ed., University of North Carolina at Greensboro	Home Economics	CC
SIMMONS, BRENDA B.A., Bethune-Cookman College; M.A., Atlanta University	Communications	NC
SIMONI, PATRICIA F. C.D.A., American Dental Assistant Association	Dental Assisting	NC
SINGH, RAM G. B.A., M.A., Government College, India; M.S., Punjab University; Ph.D., University of Florida	Physics	NC
SINGLETARY, EVA K. Diploma, The Watts Hospital School of Nursing, Durham, North Carolina	Nursing	NC
SMITH, JIMMIE L. B.S., Tennessee Technological University; M.A., George Peabody College for Teachers	Business Education	NC
SMITH, MARIE D. B.A., Jacksonville University; M.A., University of Florida	French	SC
SMITH, CLAUDE J., JR. A.B., Birmingham Southern College; M.A., University of Alabama at Tuscaloosa	Communications and Film	SC

SNEED, ANNIE B.	Nursing	NC
Diploma, Brewster Methodist Hospital School of Nursing, Jacksonville, Florida		
SPEARS, JACKSON L.	Comptroller	DA
B.S., Bowling Green College of Commerce		
STANLEY, JOHN G., JR.	Director, Evening Programs	SC
B.A., M.A.T., Jacksonville University		
STEGALL, CARROLL R.	Humanities	CC
B.S., Maryville College, Tennessee; M.Div., Columbia Theological Seminary; M.A., Florida State University		
STEIN, STANLEY W.	Psychology	SC
A.B., University of Florida; M.A., New York University		
STEWART, JANE H.	Counselor	SC
B.A., M.Ed., Memphis State University		
STEWART, SARA L.	Communications	NC
B.A., Florida A&M University; M.A., New York University		
STONER, JESSIE E.	Physical Education	SC
B.S., Florida State University; M.A., Memphis State University		
STORES, PATRICIA	Nursing	NC
B.S., Jacksonville University		
STUCKMAN, JEFFREY A.	Director, Institutional Research	DA
B.S., M.A., Ohio State University; Ed.D., University of Florida		
STUDEBAKER, GENE H.	Criminal Justice	SC
B.S., Roanoke College		
SUMMERS, COLLIER S.	Counselor	SC
B.A., University of Florida; M.A., Appalachian State University		
SUMNER, JOHNNY G.	Engineering	NC
B.S., M.A., University of Southern Mississippi		
TAYLOR, JON T.	Communications	NC
B.S., Virginia Polytechnic Institute and State University; M.A., Appalachian State University; Ph.D., Florida State University		
TERRELL, CECIL R.	Director, Educational Program Development	DA
B.S., Troy State University; M.A., Ed.D., University of Alabama at Tuscaloosa		
THOMAS, BILLY E.	Carpentry	DC
Vocational Certificate, State of Florida		
THOMAS, FRANCES P.	Assistant to the Vice President for Administrative and Business Services	DA
THOMPSON, DONALD E.	Music	SC
B.A., Wayland Baptist College; M.M., Florida State University		
THOMPSON, KENNETH W.	Mathematics	NC
A.B., Dartmouth College; M.B.S., University of Colorado		
TIDWELL, RUTHINE	Social Science	SC
B.A., Benedict College; M.S., Florida State University		
TOUCHTON, REGINALD F.	Division Chairman, Communications, Social Science, and Developmental Education	NC
B.A., M.Ed., University of Florida		

TOLLI, ELLINOR	Social Science	SC
B.A., University of Texas at Austin; M.S., Florida State University; J.D., University of Miami		
TORRIBLE, BARBARA R.	Surgical Technology	NC
Diploma, Charity Hospital School of Nursing, New Orleans, Louisiana		
TRAPP, JACQUELYN D.	Medical Laboratory Technology	NC
B.S., University of Georgia; M.S., Florida State University		
TRAUTMANN, PAUL C.	Director, Program Development	DC
B.A., M.A., University of Alabama at Tuscaloosa		
TYLER, ORVILLE Z., JR.	Social Science	CC
B.S., United States Military Academy; M.A., American University		
ULLOA, DERBY L.	Art	SC
B.A., M.A., Florida State University		
VESSELS, SHIRLEY T.	Business	NC
B.A., Georgia State University; M.B.A., University of Houston		
VOCKELL, FRANK W., JR.	Biological Sciences	CC
B.A., Miami University, Miami, Ohio; M.S., University of Cincinnati		
VONDOLTEREN, JOSEPH A.	Automotive Body Repair	DC
Vocational Certificate, State of Florida		
WALLACE, JOSEPH R.	Director of Testing	DA
B.S., East Carolina University; M.A., Appalachian State University		
WATKINS, LLOYD G.	Director, Community Services	NC
B.S., Jacksonville University; M.Ed., University of Florida		
WATSON, ROBERT L.	Vice President for Administrative and Business Services	DA
B.S., Georgia Institute of Technology; M.B.A., Leland Stanford Junior University		
WATTRON, THEODORE N.	Social Science	NC
A.B., Anderson College, Indiana; M.A., Ohio State University		
WEAVER, BILLY R.	Developmental Education	NC
B.A., M.T., Northeastern State College, Tahlequah, Oklahoma		
WEBB, MARYALICE	Director, Program Development	CC
B.S., Jacksonville University; M.S.L.S., A.M., Florida State University		
WELCH, MARY D.	Cosmetology	CC
Diploma in Accounting, Massey Business College, Jacksonville, Florida; Vocational Certificate, State of Florida		
WELMAN, GEORGE A.	Engineering	NC
B.A.E.E., Louisiana State University and Agricultural and Mechanical College		
WETHERELL, RONALD G.	Art	SC
A.B., M.A., Western Kentucky University		
WHITE, SYLVIA F.	Humanities	CC
B.M.E., Jacksonville University; M.S., Florida State University		
WHITEHEAD, KENNETH	Communications	NC
B.S., M.A., East Tennessee State University		
WIESENFELD, LAURA J.	Director, Medical Laboratory Technology	NC
B.S., University of Kentucky; M.Ed., University of Florida		
WILLIAMS, BARBARA J.	Assistant Director of Records	DA
B.S., Howard University		

WILLIAMSON, WALTER E. B.D., Emory University; B.A., Millsaps College; M.A., University of South Florida	Social Science	SC
WILSON, JACK L. A.B., University of Chattanooga; M.S., Florida State University	Social Science	CC
WILSON, LEROY B. A.B., University of Pennsylvania; M.A., George Washington University	Communications	SC
WILSON, RICHARD L. II B.S., Florida Memorial College; M.Ed., Florida A&M University	Counselor	CC
WISE, STEPHEN R. B.S., Florida Southern College; M.Ed., Middle Tennessee State University; Ed.D., University of Alabama at Tuscaloosa	Director, Special Programs	DA
WISNER, JERRY J. M.A., University of Tennessee; B.S., M.A., Tennessee Technological University	Psychology	NC
WOLFORD, LARRY D. B.A., M.A., Appalachian State University	Counselor	SC
WOLFSON, ALBERT I. B.S., Jacksonville University; C.P.A., State of Florida	Business	NC
WOLSON, WILLIAM J. B.A., M.A., Florida State University	Social Science	CC
WOMBLE, HAZEL J. B.S., M.S., Florida State University	Nursing	NC
WORDEN, DWIGHT G. A.B., M.A., Ph.D., The George Washington University	Psychology	SC
WRIGHT, JUDITH B. Diploma, Piedmont Hospital School of Nursing, Atlanta, Georgia	Nursing	NC
WRIGHT, PETER B., JR. B.S., Newberry College; M.A., George Peabody College for Teachers	Dean, Adult-Continuing Education	NC
WRIGHT, KAREN A. B.A., M.Ed., University of Florida	Fine Arts	SC
WYGAL, BENJAMIN R. B.A., Texas Tech University; M.A., Ph.D., University of Texas at Austin	President	DA
YOUNG, JOHN W. B.S., Troy State University; M.A., Auburn University	Psychology	NC
YOUREE, JOHN T. B.S.E., Henderson State College, Arkansas; M.S., University of Arkansas	Biological Sciences	NC

CAMPUS DESIGNATION

CC — CUMBERLAND CAMPUS

NC — NORTH CAMPUS

DC — DOWNTOWN CAMPUS

SC — SOUTH CAMPUS

DA — DISTRICT ADMINISTRATION

CAREER AND ADULT EDUCATION ADVISORY COMMITTEES

One of the important tasks of the College is to provide relevant career education programs to meet the occupational needs of individuals and the trained manpower needs of business and industry. Experience has shown us that this can best be accomplished with the help of locally-oriented Advisory Committees. They provide the College with advice and assistance in developing career education programs that are attuned to the times and designed to serve the needs of the area.

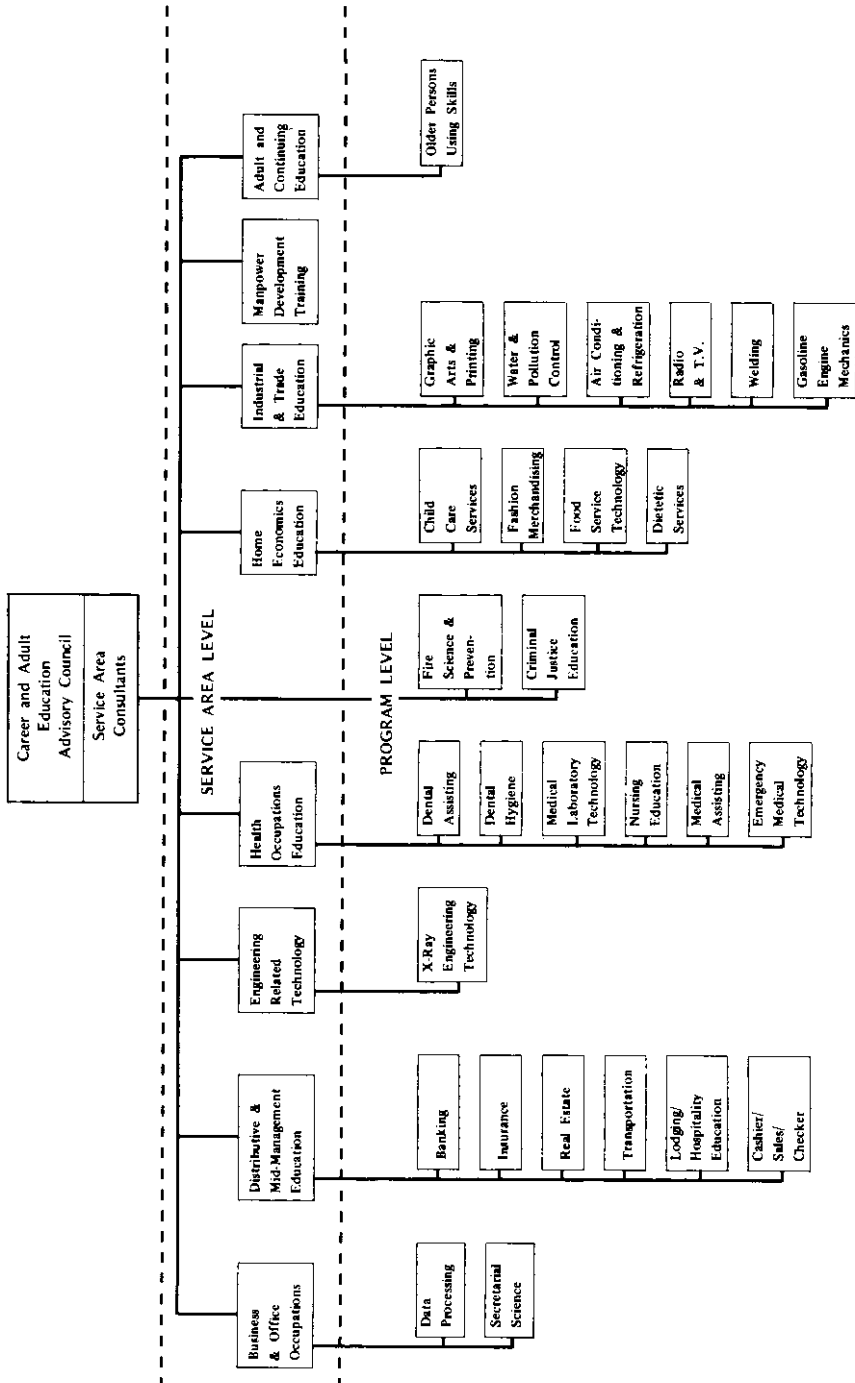
The Advisory Committee structure at Florida Junior College at Jacksonville consists of groups of persons from the community appointed to advise the College faculty regarding career (vocational-technical-occupational) and adult education programs. Advisory Committee members serve voluntarily without pay. The committees are advisory and do not possess formal authority.

The Advisory Committee structure consists of three levels. At the top level, the Career and Adult Education Advisory Council consists of select citizens representing a broad range of interests in the community. The function of this Council is to advise the President, Vice President for Campus Operations, and District Dean of Career and Adult-Continuing Education on the overall career and adult education programs. At the second level, service area Advisory Committees consist of citizens representing various interests and skills within the service area. The chairmen of service area committees meet with and serve as consultants to the Career and Adult Education Advisory Council. At the third level, program Advisory Committees are organized when and as required. Chairmen of program Advisory Committees also serve as members of the appropriate service area Advisory Committee. Following this introduction is a chart which shows the Advisory Committee structure for the College.

The Florida Junior College at Jacksonville is very grateful for the valuable and indispensable assistance provided by our Advisory Committees in the development of career (vocational-technical-occupational) programs. Without their assistance, the rapid growth and expansion of our career education programs would not have been possible.

ADVISORY COMMITTEE STRUCTURE

ADVISORY COUNCIL LEVEL



ADVISORY COUNCIL LEVEL

CAREER AND ADULT EDUCATION ADVISORY COUNCIL

Mr. Donald T. Martin
Chairman
Seaboard Coast Line Railroad Co.

Mr. Gert H. W. Schmidt
General Manager
Channel 12 — WTLV

Mr. E. G. Ballance
Plant Manager
Maxwell House Division
General Foods Corporation

Mr. Frank Taylor, Jr.
Vice President
Rogers, Miller, Taylor & Co.

Mr. Robert R. Feagin
President and General Manager
Florida Publishing Company

Mr. James H. Winston
President
Barnett-Winston Company



SERVICE AREA CONSULTANTS

Mr. Richard H. Lundgren
Director of Training
Baptist Memorial Hospital

Mr. Irby S. Exley
Owner-General Manager
Westwide Volkswagen, Inc.

Mr. Richard S. Whittington
President
Florida Tractor Corporation

Mr. George Marsch
Assistant Chief of Engineering
U.S. Corps of Engineers

Dr. Max Michael, Jr.
Executive Director
Jacksonville Hospitals
Educational Programs, Inc.

Mrs. Ardith W. Highleyman
Executive Director
Volunteer Jacksonville, Inc.

Mr. Ray E. Smith
Supervisor
Products Service Training
General Electric Company

Mr. Bobby Reid
Employee Relation Director
Florida Publishing Company

SERVICE AREA LEVEL

Business and Office Occupations

Mr. Irby S. Exley
Chairman
Owner-General Manager
Westside Volkswagen, Inc.

Mr. Richard A. Altobellis
President
Jacksonville Tractor, Inc.

Mr. L. W. Ervin
Treasurer
Volkswagen Southeastern

Mr. Paul Halter
Vice President
Stockton, Whatley, Davin & Co.

Mrs. Ethel O. Hesse, CPS
Executive Secretary to
Chairman of the Board
Florida Rock Industries, Inc.

Mr. Roland S. Kennedy
Executive Vice President
Barnett Bank of Jacksonville

Mr. James M. Williams
Manager of Purchasing and
Office Services
Blue Cross of Florida, Inc.

PROGRAM LEVEL

Data Processing

Mr. Charles Kalapp
Chairman
CDP, EDP Manager
Houdaille-Duval-Wright Co.

Mr. Frank Reneke
Information Systems Officer
Department of Central Services
City of Jacksonville

Mr. Jack Cohoon
Operations Supervisor
Data Processing Department
NAS, Jacksonville

Mr. George Rider
Computer Operator
Banner Foods

Mr. Bill Furchis
Systems Engineer
IBM Corporation

Dr. Robert Stanley
Director
Data Processing
Duval County Board of Public
Instruction

Mr. Tom Koubek
Senior Computer System Analyst
Prudential Insurance Company

Mr. James M. Neustadter
Vice President, Data Processing
Atlantic National Bank
West Bay Branch

Dr. Thomas Wood
Professor of Computer Science
University of North Florida

PROGRAM LEVEL

Secretarial Science

Mrs. Ethel O. Hesse, CPS
Chairman
Executive Secretary to
Chairman of the Board
Florida Rock Industries

Mrs. Florence Clark
State Board of Health (Retired)

Mrs. Annie Mae Ensor
Data Processing Office (Retired)
Duval County School Board

Mrs. Christine Bell
Office Manager
Barsco Supply Company

Mrs. Teresa Finch
Secretary to Mr. Ehrlich
Mathews, Osborne, Ehrlich, Attorneys

SERVICE AREA LEVEL

Distributive and Mid-Management Education

Mr. Richard S. Whittington
Chairman
President
Florida Tractor Corporation

Mr. H. A. Penny
Sales Promotion Manager
Sears, Roebuck & Company

Mr. Frank Allcorn, III
Trust Officer
Barnett First National Bank

Mr. O. V. Robichaud
CLU, Assistant General Agent
Massachusetts Mutual Life
Insurance Company

Mr. Robert H. Bossen
President
Bossen Realty, Inc.

Mr. Edwin Shaw
Traffic Manager
Jacksonville Port Authority

Mr. Reginald Bradley
Personnel Manager
A & P Food Stores

Mr. Emmett D. Smith
Sales Manager
Preferred Risk Mutual Insurance Co

Mrs. Yvonne Corey
Director of Sales
Thunderbird Motor Hotel

Mr. John C. Staninger
Vice President
Stockton, Whatley, Davin & Co.

Mr. James E. Gorman
Executive Vice President
Florida Retail Federation

Mr. Dalton R. Steele
Plant Operations Manager
Buildings, Supplies and Motor
Vehicles
Southern Bell Telephone &
Telegraph Company

Dr. Stuart McFarland
Professor of Marketing
Jacksonville University

Mrs. C. T. McIntire
Vice President
Professional Insurance Corp.

Mr. William F. Voss
Vice President and Cashier
Springfield Atlantic Bank

PROGRAM LEVEL

Banking

Mr. William F. Voss
Chairman
Vice President and Cashier
Springfield Atlantic Bank

Mr. Larry Alvarez
President
University Atlantic Bank

Mr. T. C. Clark
Vice President
Jacksonville National Bank

Mr. Frank Holeva
Vice President
Barnett Bank of Jacksonville

Mr. J. Richard Kasell
President
Barnett Bank of San Jose

Mr. Kenneth L. Pray, Jr.
Trust Officer
The Atlantic National Bank
of Jacksonville

Mr. Wilbur H. Shorts
Vice President
The State Bank of Jacksonville

Mr. Robert Slack
Personnel Director
Federal Reserve Bank

PROGRAM LEVEL

Insurance

Mr. O. V. Robichaud, CLU
Chairman
Assistant General Agent
Massachusetts Mutual Life
Insurance Company

Mr. Frank Allcorn, CLU
Trust Officer
Barnett First National Bank

Mr. Richard Austin, CLU
Manager, Life Department
Travelers Insurance Company

Dr. Richard deR. Kip
Assistant Dean
College of Business Administration
University of North Florida

Mr. Robert Gut, CPCU
Field Representative
State Treasurer Insurance
Commissioner

Mr. W. K. Mouro
Agency Manager
Herald Life Insurance Co.

Mrs. LeAnne Osburne
Employee Benefit Administrator
Guif Life Insurance Company

Mr. Rex R. Rhea
Executive Vice President
Harlan Associates

Mr. Wendell T. Scott
General Agent
Penn Mutual Life Insurance Co.

Mr. Emmett D. Smith
Sales Manager
Preferred Risk Mutual
Insurance Co.

Miss Shelby Ann Wharton
CMP Underwriter
Aetna Insurance Company

PROGRAM LEVEL

Real Estate

Mr. John C. Staninger
Chairman
Vice President
Stockton, Whatley, Davin
and Company

Mr. A. D. Saker
Regional Representative
Florida Real Estate Commission

Mr. Robert H. Bossen
President
Bossen Realty, Inc.

Mr. M. J. Simon
Owner
M. J. Simon, Realtor-Appraiser

Mr. Herb Brannen
Real Estate Procurement Officer
Duval County School Board

Mr. Walter D. Smith
Realtor
Vice President
Tucker Brothers

Mrs. Bettie Caribaltes
Vice President
Caribaltes Realty, Inc.

Mr. William Watson
President
Watson Corporation of Jacksonville
Realtors

Mr. Mac Heavener, Jr.
President
Heavener Realty

Mr. Glover Taylor
Vice President
J. Glover Taylor, Inc.

PROGRAM LEVEL

Transportation

Mr. Edwin A. Shaw
Chairman
Traffic Manager
Jacksonville Port Authority

Mr. James E. Hill
Safety Supervisor
Florida Public Service
Commission

Mr. Richard Elder
President
Elder Moving & Storage Co.

Mr. Bruce Macrae
Traffic Manager
Food Fair Stores, Inc.

Mr. Ronald Elliott
Executive Director
Greater Jacksonville Safety Council

Mr. Jack Mobley
General Traffic Agent
Delta Air Lines

Mr. Joseph Fuson
Assistant Manager—
Pricing
Seaboard Coast Line Railroad Co.

Mr. Martin Noon
Director of Safety
Ryder Truck Lines, Inc.

Mr. Walter Reed
Associate Director
Committee 100
Jacksonville Area Chamber
of Commerce

PROGRAM LEVEL

Lodging/Hospitality Education

Mrs. Yvonne Corey
Chairman
Director of Sales
Thunderbird Motor Hotel

Mr. Jack Colbert
Innkeeper
Holiday Inn South

Mr. T. A. Altee
Manager
Ramada Inn, Downtown

Mr. Ken Green
Director of Sales
Skycenter Inn

Mr. David R. Arpin
Executive Vice President
Florida Hotel Motel Association

Mr. Arthur Kloeppe
Manager
Howard Johnson Motor Lodge
Jacksonville Beach

Mr. J. Maxwell Myer
Director of Sales
Jacksonville Hilton Hotel

PROGRAM LEVEL

Cashier/Sales/Checker

Mr. Reginal Bradley
Chairman
Assistant Personnel Director
A & P Food Stores

Mr. Jerry Bernhard
Administrative Assistant
Food Fair, Inc.

Mr. F. Osborn Bryant, Jr.
President
Frank Bryant Co., Inc.

Mr. Syd Crosby
Store Manager
Publix Super Market, Inc.

Mr. Virgil Green
District Supervisor
Florida State Vocational
Rehabilitation Service

Mr. Eddie Jackson
President
Daylight Grocery Co.

Mr. R. D. Seale
Assistant Personnel Manager
Colonial Stores, Inc.

Mr. S. L. Tumlin
Director of Store Training
Winn-Dixie Stores, Inc.

Mr. William Valley
Advertising Manager
Florida Publishing Company

Mr. David E. White
Vice President
Hobart Sales & Service

Mr. N. L. Williams
Personnel Training Supervisor
Winn-Dixie Stores, Inc.

SERVICE AREA LEVEL

Engineering Related Technology

Mr. George Marsch
Chairman
Assistant Chief of Engineering
U. S. Corps of Engineers

Mr. Robert F. Darby, AIA
Executive Vice President
Reynolds, Smith and Hills, Inc.

Mr. James Dorman
Training Division
Civilian Personnel Department
U. S. Naval Air Station

Mr. H. R. Emery
Manager, Environmental Services
St. Regis Paper Company

Mr. Harold Gibson
Manager
Training and Manpower Resources
Offshore Power Systems

Mr. John D. Hollingsworth
Chief Engineer
Florida Machine and Foundry Co.

Mr. Jack McDonough
Lumberhandling Products Manager
Irvington-Moore
Div. U. S. Natural Resources, Inc.

Mr. James O. Sewell
Process Engineer
SCM Glidden-Durkee

Mr. G. Edward Shafer
Partner
Akel, Logan, & Shafer
Architects

PROGRAM LEVEL

X-Ray Engineering Technology

Mr. Gene B. Torrance
Chairman
Technical Sales Representative
Radiography
Eastman Kodak Company

Mr. Eugene Y. Adams
District Manager
Profexray Division of Litton Industries

Mr. Jack T. Barnes
Manager
S & H X-Ray Company

Mr. Charles Duran
Service Representative
Medical Marketing Division
Picker X-Ray Corporation

Mr. Anthony F. Giordano
Sales Representative
Picker X-Ray Corporation

Mr. Gary L. Patterson
Medical Systems Division
General Electric Company

Mr. R. C. Scudder
X-Ray Department
General Electric Company

Mr. Richard H. Weimer
Asst. District Manager and
Technical Director
Profexray Division of
Litton Industries

SERVICE AREA LEVEL

Health Occupations Education

Dr. Max Michael, Jr.
Chairman
Executive Director
Jacksonville Hospitals
Educational Programs, Inc.

Dr. Joel W. Baker
D. D. S.
Endodontics

Mr. Robert A. Cunningham
Executive Director
St. Luke's Hospital

Mrs. Evelyn Earnest
MT (ASCP) Medical Lab. Com.
Baptist Hospital

Mrs. Idele M. Hovey
Director of Nursing
St. Luke's Hospital

Mr. Fred J. Huerkamp
Executive Secretary
Health Planning Council
of Jacksonville Area, Inc.

Dr. Bernard H. Koosed
D. D. S., General Practice

Mrs. Hetty L. Mills
Coordinator, Outreach/Medical
Family Health Services, Inc.

Dr. Curtis Phillips
M.D.
General Surgery

PROGRAM LEVEL

Dental Assisting

Dr. Joel Baker
Chairman
Endodontics

Dr. William R. Staples
Oral Surgeon, DMD

Ms. Pat Heinkle
President
Jacksonville Dental Assistants
Assn.

Mrs. Jean Tolleson
Secretary
Jacksonville Dental Assistants Assn

Dr. Paul Johnson
DDS, General Practice

Dr. Richard Treadwell
DDS, Oral Surgeon

Dr. Wallace Sears
DDS, General Practice

Dr. James C. Tyson, Jr.
DDS, General Practice

Mrs. Patricia Simoni
ex officio
Instructor in Dental Assisting
Florida Junior College
at Jacksonville

Dr. Earl L. Williams
DDS, Oral Surgeon

PROGRAM LEVEL

Dental Hygiene

Dr. Bernard H. Koosed
Chairman
DDS, General Practice

Mrs. Swann Knowles, RDH
General Practice

Ms. Susan Halil, RDH
President
Jacksonville Dental
Hygiene Assn.

Dr. C. P. McGeachy, Jr.
DDS, General Practice

Dr. Thomas McRae
DDS, General Practice

Ms. Dorothy Hunsucker, RDH
ex officio
Instructor in Dental Hygiene
Florida Junior College at
Jacksonville

Dr. Richard Miller
DDS, Periodontics

Dr. Harold Pattishall, Jr.
DDS, Periodontics

Ms. Mary Ann Solomon, RDH
Jacksonville Dental Hygiene Assn

Dr. Joseph F. Jumber
DDS, General Practice

Dr. Robert Soud
DDS, General Practice

PROGRAM LEVEL

Medical Laboratory Technology

Mrs. Evelyn Earnest
Chairman
MT (ASCP)
Registered Medical Technologist
Baptist Memorial Hospital

Dr. Benjamin Campbell
Director of Admissions
University of North Florida

Dr. Donald Frazier
Pathologist
Program Medical Director
St. Luke's Hospital

Dr. George M. Katibah
Pathologist
Baptist Memorial Hospital

CDR Burton O. Leeb
M. C. US Navy
Chief Laboratory Services
U. S. Naval Hospital

Mr. Jack Mahoney
Chief Technologist
MT (ASCP)
Riverside Hospital

Dr. Sanford A. Mullen
Executive Vice President
and Medical Director of
Jacksonville Blood Bank

Dr. Mathew Patterson
Pathologist
St. Vincent's Medical Center

Mrs. Nancy Poore
MT (ASCP)
Memorial Hospital

Dr. Nathan Schneider
Director of Laboratories
Florida State Board of Health

Miss Linda Wilson
MT (ASCP)
University Hospital of
Jacksonville

PROGRAM LEVEL

Nursing Education

Mrs. Idele M. Hovey
Director of Nursing
Chairman
St. Luke's Hospital

Dr. Clyde M. Collins
Surgery
Private Practice

Mrs. Eileen Fleese
Assistant Administrator
for Nursing
Baptist Memorial Hospital

Mrs. Thelma Hall
Supervisor
Visiting Nurses Association

Mr. H. J. McFarland, Jr.
Assistant Executive Director
University Hospital of
Jacksonville

Miss Mary Nikodem
Director of Nursing
Memorial Hospital

Sister Catherine Norton
Administrator
St. Vincent's Medical Center

Miss Rita Storz
Director of Nursing
Methodist Hospital

Mrs. Mary Rood
Director of Nursing
Riverside Hospital

PROGRAM LEVEL

Medical Assisting

Mrs. Susan Munson
Chairman
Educational Services
Representative
Blue Cross/Blue Shield

Dr. Wilbert Leroy Dawkins, Sr.
M.D. Internist

Mr. John Murphy
Admitting Coordinator
Baptist Memorial Hospital

PROGRAM LEVEL

Emergency Medical Technology

Dr. Roy Baker
Chairman
MD, Cardiology

Mr. D. D. Ponsell
Supervisor of Training
Eight County Emergency
Medical Services—Federal Programs

Dr. William T. Haeck
ERP
Memorial Hospital

Dr. John Kruse
MD, Anesthesiology

Mr. L. L. Thompson, RN
Supervisor, Emergency Dept.
University Hospital of Jacksonville

PROGRAM LEVEL

Fire Science and Prevention

Mr. Woodrow W. Fish
Chairman
Fire Marshal
City of Jacksonville

Mr. S. J. King, Jr.
Chief of Training, Fire Department
City of Jacksonville

Mr. Walter B. Butler
Chief, Fire Department
City of Jacksonville

Mr. Robert A. McCord
Owner
McCord Insurance Agency

Mr. James A. Dowling, Jr.
Chief, Fire Department
City of Jacksonville

Mr. E. E. Wood
Chief, Fire Department
City of Jacksonville

Mr. W. J. Hiers
Lieutenant, Fire Department
City of Jacksonville

Mr. Russell Yarborough
Chief
Fire Department
City of Jacksonville

PROGRAM LEVEL

Criminal Justice Education

Mr. Dale Carson
Chairman
Sheriff Duval County

Mr. Richard King
President
Fraternal Order of Police

Mr. William M. Alexander
Special Agent in Charge,
Jacksonville Office
Federal Bureau of Investigation

Mr. James Parker
Chief
Fernandina Beach Police
Department

Mr. D. K. Brown
Undersheriff, Duval County
Office of Sheriff

Mr. Z. V. Smallwood
Lieutenant
Florida Highway Patrol

Mr. Paul Brown
Chief
Jacksonville Beach Police Department

Mr. Otha R. Smith, Jr.
District Supervisor
Florida Probation & Parole
Commission

Miss Lynne Dunn
Counselor
Division of Vocational Rehabilitation
State of Florida

Mr. Carl Stucki
Chief
Atlantic Beach Police
Department

SERVICE AREA LEVEL

Home Economics Education

Mrs. Ardith W. Highleyman
Chairman
Executive Director
Volunteer Jacksonville, Inc.

Mr. Stan Jordan
Director of Community Schools

Mr. Robert E. Cunningham
Executive Director
St. Luke's Hospital

Mrs. Jolita Mitchell
Community Organizer
Urban League

Mr. William Cutting
Buyer
Kuhn Flowers, Inc.

Mrs. Francis Paysinger
Supervisor, Home Economics
Education
Duval County Schools

Mrs. Mary Hansen
Personnel Director
Ivey's Department Store

Mrs. Doreen Sharkey
Women's Editor
Florida Times Union

Mrs. Nell Hill
Owner
Nell Hill Interiors

Mrs. Sarah Wyndham
Program Social Director
Florida Christian Apartments

Ms. Joyce Windham
Acting Director of Dietetics
University Hospital of Jacksonville

PROGRAM LEVEL

Child Care Services

Mrs. Jean Lee
Chairman
Executive Director
Day Nursery & Kindergarten
Association of Duval County, Inc.

Dr. Kathleen Johnson
Associate Professor of Education
Jacksonville University

Mrs. Betty Carley
Child-Care Coordinator
4-C Program
Community Planning Council

Dr. Nell Kannwischer
Consultant, Teacher Education
State Board of Education

Mrs. Annie Everett
Director, College Park
Kindergarten

Mrs. Doris McIntyre
Kindergarten Teacher
Duval Board of Public Instruction

Mr. T. W. Everett
Teacher (Retired)

Mrs. Louise Phillips
Director, Day Care Center
Fun Day Kindergarten &
Nursery School

Mrs. June Gibson
Assistant Supervisor
Day Care Unit
Department of Health &
Rehabilitative Services
Division of Family Services

Mrs. Harriett Ross
Director
Ortega Kindergarten

Mrs. Ruth Heuser
Director, Pearson Center
Division of Health and
Rehabilitative Services

Mrs. Marion Scarborough
Director
Happy Acres Ranch

Mrs. Virginia Huxham
Kindergarten Teacher
Ponte Vedra-Palm Valley School

Mrs. Barbara Scott
Coordinator
Kindergarten Program
Duval County School Board

Mrs. Willie Lee Smith
Director
Day Spring Baptist Church

Mrs. Janice Wood
College of Education
University of North Florida

PROGRAM LEVEL

Fashion Merchandising

Mrs. Mary Hansen
Chairman
Personnel Director
Ivey's Department Stores

Mrs. Barbara Hamlin
Store Manager
Ivey's Department Store
Regency Square

Mrs. Mary C. Baker
Personnel Representative
May Cohen's Department Store

Mr. Gene Houseal
Merchandise Manager
Boluns

Mrs. Helen Cligrow
Personnel Director
Furchgott's

Mr. R. W. Roberts
Personnel Manager
J. C. Penney Company

Miss Ann Conner
Fashion Editor
Women's Department
Florida Times Union

Miss Michelle Smith
Student Advisor
Ivey's of Jacksonville

Mr. Gran P. Jenkins
Personnel Director
Sears Roebuck and Company

Mrs. Elizabeth Taylor
Personnel Director (Retired)
Furchgott's

PROGRAM LEVEL

Food Service Technology

Mr. Robert E. Cunningham
Chairman
Executive Director
St. Luke's Hospital

Mr. Jarvis Lee Bell
Assistant Food Director
City Jail
City of Jacksonville

Mrs. Lillian Abelardo
Nutrition Consultant
Health Department
City of Jacksonville

Mrs. Betty Cornelius
Food Editor
Florida Times Union

Mr. Charles W. Baker
Manager
Morrison's Food Service

Mr. Lynn G. Fry
General Manager
University Club

Mr. Myron Greenspan
Director of Dietetics
Baptist Memorial Hospital

FOOD SERVICE TECHNOLOGY (continued)

Mr. Hans Kaunath
Food & Beverage Director
Ponte Vedra Inn

Mr. Campbell Powell
Food Service Director
Regency House

Mrs. Judy L. Lages
Director of Sales
Hertz Sky Center Inn

Mr. I. A. Saleh
Food & Beverage Manager
Holiday Inn South

Mr. Henry G. Motes
Vice President
E. H. Thompson Company

Mrs. Frances Paysinger
Supervisor
Home Economics Education
Duval County Public Schools

Mr. William M. Wagner
Food & Beverage Manager
Jacksonville Hilton Hotel

PROGRAM LEVEL

Dietetic Services

Miss Joyce Windham
Chairman
Acting Director Dietetics
University Hospital of
Jacksonville

Mr. Sidney Entman
Executive Director
River Garden Hebrew Home
for the Aged

Mrs. Lillian Abelardo
Nutrition Consultant
Health Department
City of Jacksonville

Mr. Franklin Ferrell
Food Service Director
St. Luke's Hospital

Mrs. Barbara Barnett
Food Service Manager
Dietary Services
St. Vincent's Medical Center

Mrs. Jean Norris
Consulting Dietitian
Nursing Homes and Hospitals

Mrs. Marjorie Cavan
Food Production Supervisor
University Hospital of Jacksonville

Mrs. Nell Treese
Director, Dietary Dept.
Jacksonville General Hospital

Mrs. Mamie Davis
Institutional Nutrition
Consultant
State Division of Health

Sister Amelia Zurgable
Food Service Director
St. Vincent's Medical Center

Mrs. Barbara Schwegler
Nutrition Consultant
for Child Care Institutions
State Division of Health

SERVICE AREA LEVEL

Industrial and Trade Education

Mr. Ray E. Smith
Chairman
Manager, Training
General Electric Company

Mr. Lawrence J. Lesperance
Sea Coast Appliance Dist.
of Jacksonville, Inc.

Mr. Robert Broadfoot, Jr.
Co-Chairman
Robert A. Broadfoot, Jr.,
Architect

Mr. Clay Mort
Executive Manager
Associated General Contractors
of America

Mr. Kenneth Friedman
President and Owner
Poster Art Displays, Inc.

Mr. Arthur Nisson
General Service Manager
Gain and Bultman, Inc.

Mr. A. P. Stanaland
Branch Manager
Customer Products of Jacksonville

PROGRAM LEVEL

Graphic Arts/Printing

Mr. Al Shantz
Chairman
Lewis Business Forms, Inc.

Mr. A. W. McClurkin
President
Peoples Screen Printing Company

Mr. I. Emerson Bryan
Industrial Arts Instructor
Duval County Public Schools

Mr. Alfred Miller, Jr.
President
Miller Press

Mr. Ray Caldwell
President
Caldwell Printing Company, Inc.

Mr. Bobby G. Reid
Director of Industrial Training
Florida Times Union

Mr. Archie Crutcher
Manager
Arco Press

Mr. A. A. Westcott
President
Westcott Printing, Inc.

Mr. Steve Edenfield
President
National Business Services

Mr. George Wheeler
Sales Representative
Virginia Paper Company

PROGRAM LEVEL

Water and Pollution Control

Mr. Brian P. Collins
Chairman

Chief of Water and Sewer Division
City of Jacksonville

Mr. Howard Lewis, Sr.
President

Water & Sewer Division (Retired)
City of Jacksonville

Mr. A. J. Johns
President
A. J. Johns, Inc.

Mr. Jerry M. Owen
Northeast Regional Engineer
State Board of Health

Mr. Paul Silvis
Supervisor of Public Utilities
Jacksonville Beach Water Works

PROGRAM LEVEL

Air Conditioning and Refrigeration

Mr. Walter Berry, Jr.
Chairman
President
Fountain Products &
Equipment Company, Inc.

Mr. William R. Hrabal
Supervisor of Mechanical
Inspection
City of Jacksonville

Mr. Lamar Blount
Supervisor of Customer Assurance
Florida Air Conditioners, Inc.

Mr. Lloyd Miller
Superintendent
Charlie Floyd Air Conditioning
Sales & Service

Mr. Robert G. Hardiman
Engineer for Central Heating & A.C.
General Electric Company

Mr. Charles Theodore Vollers, III
Vice President
Vollers Heating & Air Conditioning

PROGRAM LEVEL

Radio & T.V.

Mr. Roger I. Marvin
Chairman
Owner
Roger I. Marvin Radio/T.V.

Mr. Warren V. Lewis
Manager, Service Dept.
Montgomery Ward

Mr. John Barwick
Service Technician
Crown TV Service

Mr. Leroy Rometry
Service Technician
Monarch Radio & TV Service

Mr. Nathaniel Hendley
Owner/Operator
Midway Radio & TV

Mr. Guy Sweetland
Zenith Factory Representative
Cain & Bultman, Inc.

PROGRAM LEVEL

Welding

Mr. E. L. McInnis
Manager
Quality Assurance & Training
Jacksonville Shipyards, Inc.

Mr. Charles Raines
Welding Foreman
Mayport Division
Jacksonville Shipyards, Inc.

Mr. Rudolph Murray
Equal Employment Opportunity
Officer
Jacksonville Shipyards, Inc.

Mr. George Strate
Sales Manager
Airco Welding Supply

Mr. R. E. Peterson
Welding Supervisor
Florida Steel Corp.

PROGRAM LEVEL

Gasoline Engine Mechanics

Mr. T. G. Haven
Area Supervisor
Chrysler Marine Corp.

Mr. Bob Nickels
Owner
Nickels Equipment Co.

Mr. John T. Lowe
Executive Vice President
Jacksonville Marine Assn.

Mr. Gordon Reed
Owner
Isle of Palms Marina, Inc.

Mr. Leon Zimmerman
President and Manager
RADCO Distributors, Inc.

SERVICE AREA LEVEL

Manpower Development Training

Mr. Bobby Reid
Chairman
Director of Industrial Relations
Florida Publishing Company

Mr. H. E. Grimm
Owner
H. E. Grimm Auto Repair

Mr. John Baggett
Director of Personnel
Baptist Memorial Hospital

Mr. Ray Howard
Commissioner
Florida Probation and
Parole Commission

Mr. John Demps
Director, Urban Affairs
Jacksonville Area Chamber
of Commerce

Mr. James M. Hull
Administrator
Florida Christian Home
Apartments, Inc.

MANPOWER DEVELOPMENT TRAINING (continued)

Mr. Henry Isaacs
General Manager
Levy-Wolf

Mr. C. E. McAlister
Store Manager
Montgomery Ward

Mr. Ed. L. McInnis
Manager
Quality Assurance and Training
Jacksonville Shipyards, Inc.

Mr. L. E. Morgan
Vice President-Manager
Floeco Corporation

Mr. J. C. Prime
Employment Manager
Southern Bell Telephone

Mr. George K. Quinney
Assistant Employment Manager
Blue Cross-Blue Shield of
Florida, Inc.

Mr. Charles Rains
Welding Foreman
Jacksonville Shipyard, Inc.

Mr. John Ronayne
Manager, Industrial Relations
Anheuser-Busch

Mr. Roland Waldron
Co-Owner
Jinnette and Waldron Motor Co.

SERVICE AREA LEVEL

Adult and Continuing Education

Mr. Richard H. Lundgren
Chairman
Director of Training
Baptist Memorial Hospital

Mr. Dan Lee
Coordinator
Community Schools
Oceanway Community School

Mrs. Mildred Christopher
Instructor
Florida Junior College
at Jacksonville

Rev. Rudolph McKissick
Pastor
Bethel Baptist Church

Mr. Alvin W. Pollard
Aerospace Ground Equipment
Technician
Florida Air National Guard

PROGRAM LEVEL

Adult and Continuing Education

Older Persons Using Skills

Miss Blanche A. Murray
Chairman
Director of Activities
Cathedral Residence

Mr. Mickey R. King
Councilman, District 4
Jacksonville City Council

Mr. Herbert W. Craig
Vice Chairman
Project Director
American Assn. of Retired People/
National Retirement Assn. (Retired)

Mrs. Margaret Long
Part-time Coordinator
Home Economics
Florida Junior College
at Jacksonville

Mrs. Minnie Bradley
Project Director
Franklin Arms Apartments

Mrs. Betty Mallison
Homemaker

Mr. Sidney Entman
Administrator
River Garden Hebrew Home

Mrs. Luvenia O'Neil
President
Eastside Senior Citizens
Council, Inc.
Franklin Arms Apartments

Mr. James Fortuna
Adult Advisor to the Mayor
City of Jacksonville

Mrs. Mildred A. Sterling
Administrator
Cathedral Residence

Mrs. Ardith Highleyman
ex officio
Executive Director
Volunteer Jacksonville, Inc.

Mr. Paul Trautman
Director, Program Development
Downtown Campus
Florida Junior College
at Jacksonville

Mr. Stanley Jordan
Director, Community Schools
Duval County Schools

Mrs. Geraldine N. Walker
Downtown Center—Counselor
Florida Junior College
at Jacksonville

Mr. Woody Keefe
Senior Citizens Coordinator
Department of Recreation &
Public Affairs
City of Jacksonville

Rev. A. J. Warren
Minister
Bridier Christian Church

COURSE PREFIX INDEX

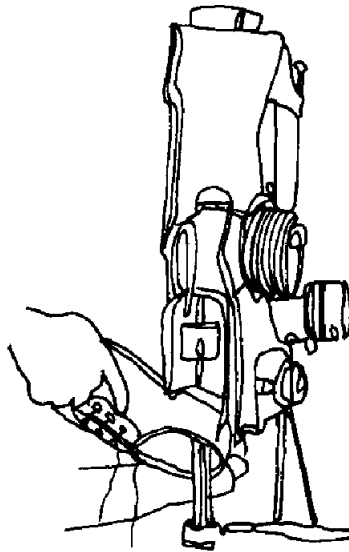
(COLLEGE CREDIT AND NON-COLLEGE CREDIT)

	Page(s)
AAC—Accounting and Computing	103-104, 160
ABF—Auto Body and Fender	160
ADS—Advertising Services	104
AIC—Air Conditioning	104, 160
AIO—Aircraft Operations	104, 161
ANA—Anatomy	105, 161
ANT—Anthropology	105
APA—Apparel and Accessories	105-106
APC—Applied Communications	106, 161
APD—Applied Design	106-107, 161
APM—Applied Mathematics	107-108, 161
APS—Applied Science	162
ARR—Appliance Repair	162
ART—Art	108, 162
AST—Astronomy	108
AUE—Automotive (Distributive)	162
AUM—Automotive Mechanics	162
BCN—Building Construction and Maintenance	109, 162
BDP—Business Data Processing Systems	109-110, 163
BIO—Biology	110-111, 163
BLC—Black Culture	111, 163
BLR—Blueprint Reading	163
BMM—Business Machine Maintenance	163
BOT—Botany	111
BUN—Business Information Communication	163-164
BUW—Business Law	111, 164
CAP—Carpentry	164
CEC—Consumer Education	164
CEQ—Construction Equipment	164
CFI—Commercial Fishery	164
CGC—Care and Guidance of Children	111-113, 164
CHD—Child Development	165
CHE—Chemistry	113-114, 165
CHI—Chinese Language	165
CIN—Cinematography	114
CIT—Civil Technology	114
CLT—Clothing & Textiles	114, 165-166
CMP—Clothing Management, Production, Services	166-167
COA—Commercial Art	167
COM—Creative Writing	114
COP—Community Preparedness	167
COR—Corrections	115, 167
COS—Communications	115
COY—Cosmetology	167

DEA—Dental Assisting	115-117, 167
DEH—Dental Hygiene	117
DIM—Diesel Mechanic	168
DRA—Dramatic Arts	118, 168
DRT—General Shop, Drafting	168
DTG—Drafting	118, 168
ECO—Economics	118-119, 168
ECY—Ecology	119, 169
EDU—Education	119
EFL—English as a Foreign Language	169
ELS—Electronics	119, 169
EME—Emergency Medical Technology	119-120
ENG—English	120, 169
ENR—Engine Repair	170
ESY—Safety Education	170
FAR—Family Relations	120, 170
FCR—Finance and Credit	120-122, 170-172
FIF—Firefighting	122-123
FMC—Filing, Office Machines, and General Office Clerical	124, 172-173
FMD—Foremanship, Supervision, and Management Development	124, 173
FOD—Food Distribution	173
FON—Foods and Nutrition	173-174
FRE—French Language	124, 174
FSE—Food Services (Distributive)	174
FSM—Food Services and Management	124-126, 174-176
GEO—Geography	126
GER—German Language	126, 177
GEY—Geology	126-127, 177
GME—General Merchandise	127, 177
GMR—Retail Trade	177
GRA—Graphic Arts	127-129, 177-178
HEE—Home Economics Education	178
HEF—Home Equipment and Furnishing	178-179
HEN—Health Education	130, 179
HIS—History	130-131, 179-180
HMG—Homemaking (Comprehensive)	180
HOL—Hotel and Lodging	131, 180
HOM—Home Management	180-181
HSM—Health Services Management	181
HUM—Humanities	132-133
IAE—Industrial Atomic Energy	133
IDS—Interdisciplinary Studies	133, 181
IEL—Industrial Electricity	133-134, 181-182
INM—Institutional and Home Management & Supporting Services	182
INR—International Relations	134
INS—Insurance	135-136, 182-185
ISA—Industrial Safety	136
ITA—Italian Language	185

ITE—Industrial Technology	186
ITR—International Trade	186
JOU—Journalism	136
LAE—Law Enforcement	136-137, 186
LIS—Library Science	138, 186
LIT—Literature	138, 187
LTW—Leatherworking	187
MAG—Marketing	138-139
MAM—Marketing Management	139, 187
MAT—Mathematics	139-141, 187-188
MAY—Masonry	188
MEA—Medical Assistant	188
MET—Meteorology	141
MEW—Metalworking	188-189
MEY—Metallurgy	141
MLT—Medical Laboratory Technology	141-142
MSH—Machine Shop	189
MTY—Mechanical Technology	142-143, 189
MUS—Music	143-146, 189
MUY—Musicology	147, 189
NUA—Nursing Assistance, Aide	189
NUR—Nursing	147-148, 189
OCO—Occupational Orientation	148
ORH—Ornamental Horticulture	190
PDE—Painting and Decorating	190
PEA—Combinations of Sports	190
PED—Physical Education	148-150, 190
PEL—Physical Education Leadership	150-151
PET—Petroleum	190
PHI—Philosophy	151, 191
PHS—Physical Science	151, 191
PHY—Physics	152
POS—Political Science	152, 191
PPF—Plumbing and Pipefitting	191
PRN—Practical Nursing	192
PSY—Psychology	153, 192
PTY—Photography	192
QFO—Quantity Food	192
REL—Religion	153
REM—Recreational Management	153
RES—Real Estate	154, 192-193
ROO—Roofing	193
RTV—Radio/Television	193
RUS—Russian Language	154, 193
SAM—Supervisory and Administrative Management	154-155, 193-194
SHM—Sheet Metal	194
SLD—Special Learning Disabilities, Education	155, 194
SOC—Sociology	155, 194
SOP—Social Psychology	155, 194
SPA—Spanish Language	155-156, 194

SPE—Speech	156, 194
SSS—Social Sciences	156-157, 195
STO—Surgical Technician, Operating	195
STS—Stenographic, Secretarial, and Related	157, 195-196
STT—Structural Technology	157-158
TER—Technical Reporting	158
TPF—Textile Production and Fabrication	196
TRA—Transportation	158, 196-197
TYG—Typewriting	159, 197
UPH—Upholstering	197
WAC—Warehouse Clerk	197
WEL—Welding and Cutting	197
WOC—Woodworking	198
ZOO—Zoology	159



GENERAL INDEX

Accelerated High School Program	18
Accident Reporting	41
Accounting and Computing, Course Descriptions	103-104
Accounting Program	
Curriculum, A. S. Degree	66
Course Descriptions	103-104
Accreditation	9
Activities, Student	50-54
Administrative Officers	2
Administrators, Listing	199-218
Admission Requirements	17-28
Adult and Continuing Education Programs	98-102
Adult Basic Education	98
Adult, Continuing Education Program	15
Advertising, Course Description	104
Advising	44
Advisory Committees	219-241
Afro-American History, Course Descriptions	111, 163
Air Conditioning, Course Descriptions	160
Aircraft Operations, Course Descriptions	161
Anatomy, Course Descriptions	105, 161
Anthropology, Course Descriptions	105
Apparel, Course Descriptions	105-106
Appliance Repair, Course Description	162
Applied Communications, Course Descriptions	106, 161
Applied Design, Course Descriptions	106-107, 161
Applied Mathematics, Course Descriptions	107-108, 161
Applied Science, Course Description	162
Architectural and Building Construction Technology Program	
Curriculum, A. S. Degree	67
Course Descriptions	157-158
Art, Course Descriptions	108, 162
Associate in Science Degree Programs	64-88
Astronomy, Course Description	108
Athletics	54
Attendance, Policy	39
Audio-Visual Services	16
Auditing of Courses	23-24
Auto Body and Fender, Course Description	160
Automotive (Distributive), Course Description	162
Automotive Mechanics, Course Descriptions	162
Banking Program	
Curriculum, A. S. Degree	68
Course Descriptions	120-122
Biology, Course Descriptions	110-111, 163
Black History, Course Descriptions	111, 163

Blueprint Reading, Course Descriptions	163
Bookstore Services	46
Botany, Course Description	111
Building Construction and Maintenance, Course Descriptions	109, 162-163
Business Data Processing Systems, Course Descriptions	109-110, 163
Business Information Communication, Course Description ..	163-164
Business Law, Course Descriptions	111, 164
Business Machine Maintenance, Course Description	163
Business Program, General Curriculum, A. S. Degree	77
Course Descriptions	154-155
Calendar	5-8
Campus Information	9-11
Campus Locations	1
Campus Telephone Numbers	1
Care and Guidance of Children, Course Descriptions ..	111-113, 164
Cancellation of a Course	26
Career and Adult Education Advisory Committees	219-241
Career Development Centers	45
Career Education Program	14-15
Carpentry, Course Description	164
Certificate Programs, College Credit	89-95
Certificate Programs, Non-College Credit	95-97
Chemistry, Course Descriptions	113-114, 165
Child Care Services Program Curriculum, A. S. Degree	68-69
Course Descriptions	111-113, 164
Child Development, Course Description	165
Chinese Language, Course Description	165
Cinematography, Course Description	114
Civil Engineering Technology Program Curriculum, A. S. Degree	69-70
Course Description	114
Civil Technology, Course Description	114
Class Attendance	39
Clerical, General, Course Descriptions	124, 172-173
Clerical Program Curriculum, Certificate	90
Course Descriptions	124
Clothing Management, Production, Services, Course Descriptions	166-167
Clothing and Textiles, Course Descriptions	114, 165-166
Combinations of Sports, Course Description	190
Commercial Art, Course Description	167
Commercial Fishery, Course Description	164
Communications, Course Description	115
Communications Laboratory	16
Community Preparedness, Course Description	167
Community Services	102

Computer Operations Program	
Curriculum, Certificate	90-91
Course Descriptions	109-110
Construction Equipment, Course Description	164
Consumer Education, Course Description	164
Contents, Table of	3
Cooperative Education Program	15
Course Descriptions	148
Corrections, Course Descriptions	115, 167
Correspondence or Extension Courses	23
Cosmetology, Course Description	167
Counseling	44
Course Descriptions, College Credit	103-159
Course Descriptions, Non-College Credit	160-198
Course Load, Maximum	39
Course Prefix Index	242-245
Creative Writing, Course Descriptions	114
Criminal Justice Education—Corrections Program	
Curriculum, A. S. Degree	70
Course Descriptions	115
Criminal Justice Education—Law Enforcement Programs	
Curriculum, A. S. Degree	71
Curriculum, Certificate	91
Course Descriptions	136-137, 186
Cumberland Campus	10
Curricula	
Associate in Arts Degree	62-63
Associate in Science Degree	64-65
College Credit Certificate	89
Non-College Credit Career Education Programs	95-97
Adult and Continuing Education Programs	98-102
Data Processing Program	
Curriculum, A. S. Degree	71-72
Course Descriptions	109-110
Definition of Terms	55-56
Dental Assisting Program	
Curriculum, Certificate	91-92
Course Descriptions	115-117, 167
Dental Hygiene Program	
Curriculum, A. S. Degree	72-73
Course Descriptions	117
Developmental Education	16
Diesel Mechanic, Course Description	168
Directory, Faculty and Administration	199-218
Downtown Campus	10
Downtown Center	10
Drafting and Design Technology Program	
Curriculum, A. S. Degree	73-74
Course Descriptions	118
Drafting, Course Descriptions	118, 168

Drafting Program	
Curriculum, Certificate	92-93
Course Descriptions	118
Dramatic Arts, Course Descriptions	118, 168
Early Admission Programs	18-19
Ecology, Course Descriptions	119, 169
Economics, Course Descriptions	118-119, 168
Education, Course Description	119
Electronics, Course Descriptions	119, 169
Electronic Engineering Technology Program	
Curriculum, A. S. Degree	74
Course Descriptions	133-134
Emergencies, First Aid	41
Emergency Medical Technology, Course Descriptions	119-120
Employment, of Students	45, 49
Engine Repair, Course Description	170
English, Course Descriptions	120, 169
Enrollment, College Credit Courses	17-21, 25
Enrollment, Non-College Credit Courses	25
Equality, Policy on	13
Equal Opportunity Policy	13
Evening Adult Centers	11
Faculty Listing	199-218
Family Relations, Course Descriptions	120, 170
Fashion Merchandising Program	
Curriculum, A. S. Degree	75
Course Descriptions	105-106
Fee Schedule	29-35
Fees, for Tests	33
Filing, Office Machines, and General Office Clerical, Course	
Descriptions	124
Finance and Credit, Course Descriptions	120-122, 170-172
Financial Aid	46-49
Financial Information	
Registration Fees and Additional Fees	29-35
Firefighting, Course Descriptions	122-123
Fire Science and Prevention Programs	
Curriculum, A. S. Degree	75-76
Curriculum, Certificate	93
Course Descriptions	122-123
First Aid, Emergencies	41
Food Distribution, Course Descriptions	173
Food Services (Distributive), Course Descriptions	174
Food Services and Management,	
Course Descriptions	124-126, 174-176
Food Service	46
Food Service Technology Programs	
Curriculum, A. S. Degree	76-77
Curriculum, Certificate	93-94
Course Descriptions	124-126
Foods and Nutrition, Course Descriptions	173-174

Foremanship, Supervision, and Management Development, Course Descriptions	124, 173
French Language, Course Descriptions	124, 174
G.E.D. Examination	100-101
General Business Program	
Curriculum, A. S. Degree	77
Course Descriptions	154-155
General Education Requirements	
Associate in Arts Degree	57-60
Associate in Science Degree	61
General Merchandise, Course Descriptions	127, 177
General Shop, Drafting, Course Descriptions	168
Geography, Course Descriptions	126
Geology, Course Descriptions	126-127, 177
German Language, Course Descriptions	126, 177
Grade Deadlines, Incomplete	8
Grading System	39-40
Graduation Requirements	37-38
Graduation, with Honors	38
Grants	48
Graphic Arts Program	
Curriculum, A. S. Degree	82-83
Course Descriptions	127-129
Health, Course Descriptions	130, 179
Health Services	54
Health Services Management, Course Description	181
High School Completion Program	98-99
High School Equivalency Program	100-101
History, Course Descriptions	130-131, 179-180
History of the College	9
Holidays	4
Home Economics Education, Course Description	178
Home Equipment and Furnishings, Course Descriptions ...	178-179
Homemaking, Course Description	180
Home Management, Course Descriptions	180-181
Honors Graduation	38
Hospitality Management Program	
Curriculum, A. S. Degree	78
Course Descriptions	131
Hotel and Lodging, Course Descriptions	131, 180
Housing	36
Humanities, Course Descriptions	132-133, 181
Incomplete Grade Deadlines	8
Individualized Studies Program	16
Industrial Atomic Energy, Course Descriptions	133
Industrial Electricity, Course Descriptions	133-134, 181-182
Industrial Safety, Course Description	136
Industrial Technology, Course Description	186
In-Service Teachers	20
Institutional and Home Management and Supporting Services, Course Description	182

Insurance, Professional Malpractice	33
Insurance Program	
Curriculum, A. S. Degree	79
Course Descriptions	135-136
Interdisciplinary Studies Program	16
Course Descriptions	133, 181
International Relations, Course Description	134
International Students	20-21
International Trade, Course Description	186
Italian Language, Course Description	185
Job Placement	45
Journalism, Course Description	136
Law Enforcement, Course Descriptions	136-137, 186
Leatherworking, Course Description	187
Library Science, Course Descriptions	138, 186
Library Services	16
Literature, Course Descriptions	138, 187
Loans	48-49
Machine Shop, Course Descriptions	189
Marketing Program	
Curriculum, A. S. Degree	79-80
Course Descriptions	138-139
Masonry, Course Description	188
Mathematics, Course Descriptions	139-141, 187-188
Marketing Management, Course Descriptions	139
Mechanical Engineering Technology Program	
Curriculum, A. S. Degree	80-81
Course Descriptions	118, 142-143
Mechanical Technology, Course Descriptions	142-143
Medical Assistant, Course Description	188
Medical Laboratory Technology Programs	
Curriculum, A. S. Degree	81-82
Curriculum, Certificate	94
Course Descriptions	141-142
Metallurgy, Course Description	141
Metalworking, Course Descriptions	188-189
Meteorology, Course Description	141
Military Service School Credits	22
Music, Course Descriptions	143-146, 189
Musicology, Course Descriptions	147, 189
Non-College Credit Certificate Programs	95-97
Non-College Credit Course Descriptions	160-198
North Campus	9
Nursing Assistance, Aide, Course Description	189
Nursing, Technical Program	
Curriculum, A. S. Degree	85-86
Course Descriptions	147-148
Objectives, of the College	12
Occupational Orientation, Course Descriptions	148
Orientation	44
Ornamental Horticulture, Course Description	190

Painting and Decorating, Course Description	190
Petroleum, Course Description	190
Philosophy, Course Descriptions	151, 191
Philosophy, of the College	12
Photography, Course Descriptions	192
Physical Education, Course Descriptions	148-151, 190
Physical Science, Course Descriptions	151, 191
Physics, Course Descriptions	152
Plumbing and Pipefitting, Course Description	191
Policies and Regulations	39-43
Political Science, Course Descriptions	152, 191
Practical Nursing, Course Description	192
Prefix, Course Index	242-245
Printing/Graphic Arts Program	
Curriculum, A. S. Degree	82-83
Course Descriptions	127-129
Program Locations, Campus	
A. A. Degree	63
A. S. Degree	65
College Credit Certificate	89
Non-College Credit Certificate	96-97
Adult and Continuing Education	102
Psychology, Course Descriptions	153, 192
Quality Points	40
Quantity Food, Course Description	192
Radio, Television, Course Description	193
Real Estate Program	
Curriculum, A. S. Degree	83-84
Course Descriptions	154
Recreational Management, Course Description	153
Refunds, of Fees	34-35
Registration, Concurrent	25
Regulations, Policies and	39-43
Religion, Course Descriptions	153
Residency Affidavit	21-22
Retail Merchandising Program	
Curriculum, A. S. Degree	84
Course Descriptions	127
Retail Trade, Course Description	177
Roofing, Course Description	193
Russian Language, Course Descriptions	154, 193
Safety Education, Course Description	170
Schedule Changes	41
Scholarships	47
Secretarial Science Program	
Curriculum, A. S. Degree	85
Course Descriptions	157
Selective Service Information	45
Servicemen's Opportunity College	24
Servicemen's, Veterans' Information	24
Sheet Metal, Course Description	194

Smoking Ban	41
Social Psychology, Course Descriptions	155, 194
Social Sciences, Course Descriptions	156-157, 195
Social Security Information	23
Sociology, Course Descriptions	155, 194
South Campus	9
Spanish Language, Course Descriptions	155-156, 194
Special Learning Disabilities, Education, Course Descriptions	155, 194
Special Student Status	18
Speech, Course Description	156, 194
Stenographic, Secretarial, and Related, Course Descriptions	157, 195-196
Stenography Program Curriculum, Certificate	94-95
Course Descriptions	157
Structural Technology, Course Descriptions	157-158
Student Activities	50-54
Student Development	44-49
Student Government Association	52
Supervisory and Administrative Management, Course Descriptions	154-155, 193-194
Surgical Technician, Operation, Course Description	195
Surveying, Course Description	114
Table of Contents	3
Technical Reporting, Course Description	158
Terms, Definition of	55-56
Test Fees	33
Testing	27-28, 44
Testing Information	27-28, 44
Textile Production and Fabrication, Course Descriptions	196
Traffic Regulations	42-43
Transcript Requests	23
Transfer or Transient Students	19-20
Transportation Program Curriculum, A. S. Degree	86-87
Course Descriptions	158, 196-197
Trustees, Board of	2
Typewriting, Course Descriptions	159, 197
University Parallel Program	14
Upholstering, Course Descriptions	197
Veterans' Information	24
Warehouse Clerk, Course Description	197
Welding and Cutting, Course Description	197
Withdrawal Regulations	26
Woodworking, Course Descriptions	198
X-Ray Engineering Technology Program Curriculum, A. S. Degree	87-88
Course Descriptions	133
Zoology, Course Description	159

NORTH campus

DUVAL COUNTY

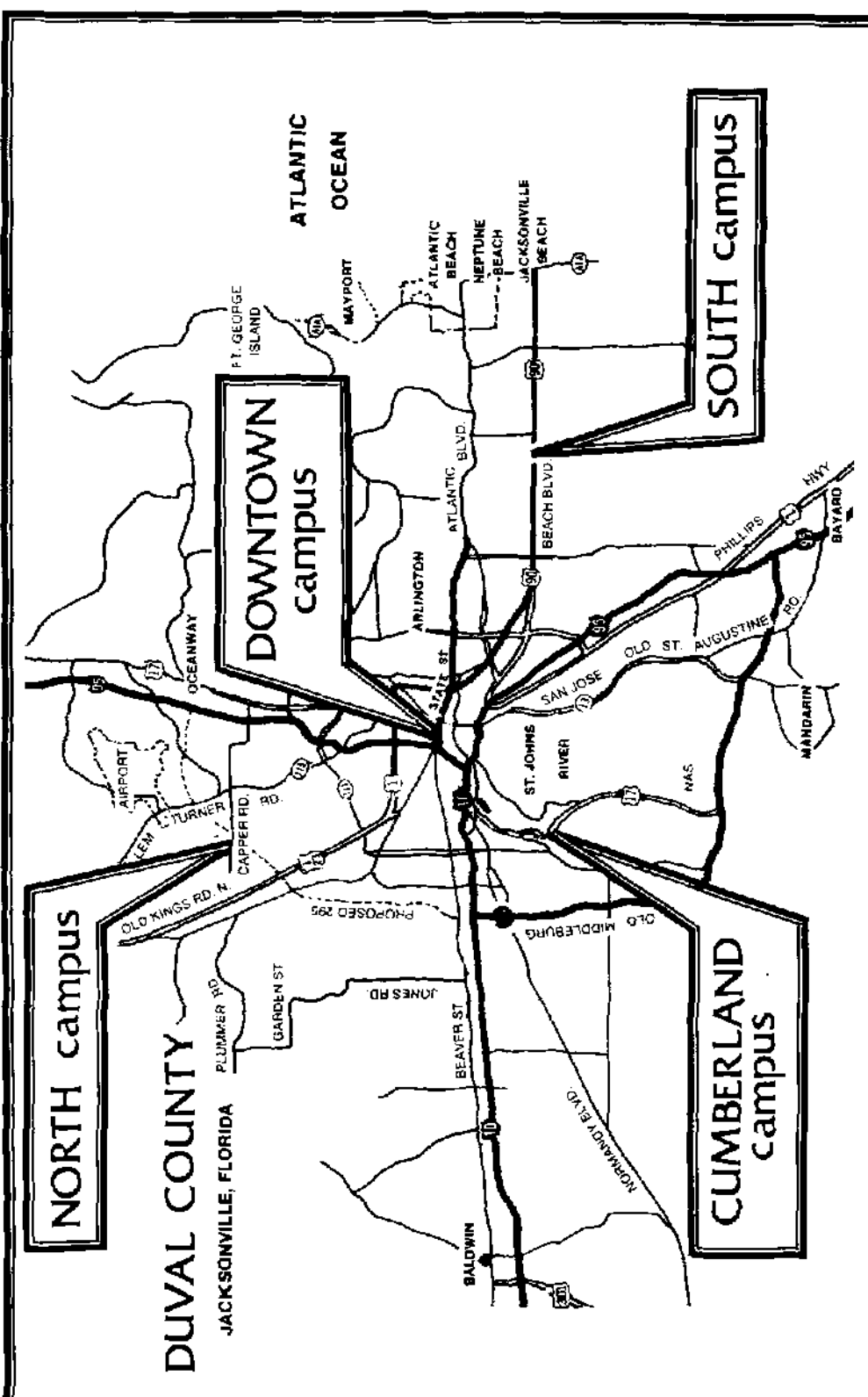
JACKSONVILLE, FLORIDA

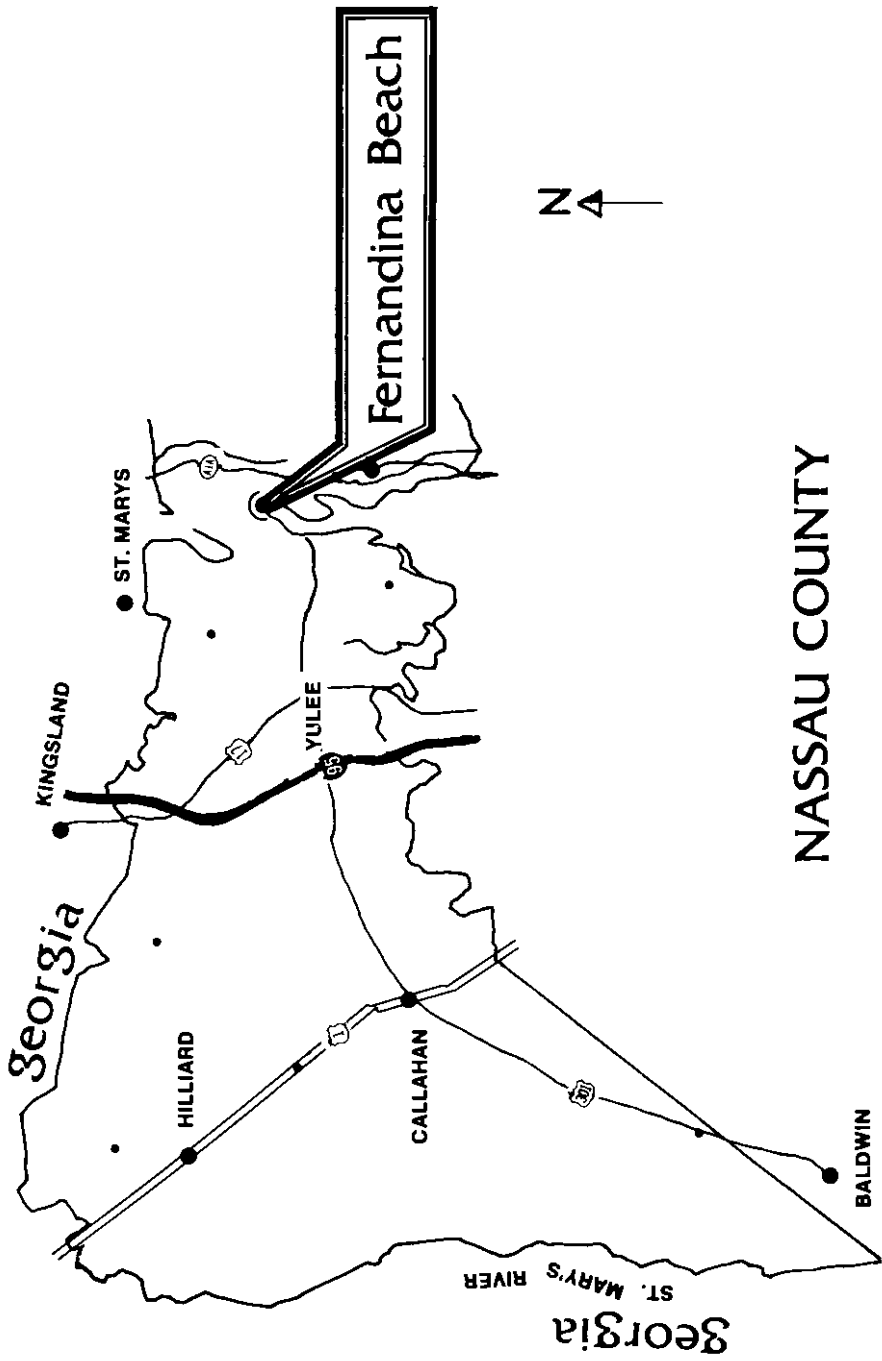
ATLANTIC OCEAN

CUMBERLAND campus

SOUTH campus

DOWNTOWN campus





Fernandina Beach



NASSAU COUNTY

Georgia

HILLIARD

CALLAHAN

YULEE

KINGSLAND

ST. MARYS

BALDWIN

Georgia
ST. MARYS RIVER



FLORIDA
COMMUNITY
COLLEGE
— ★ —
AT JACKSONVILLE