



FACULTY AND ADMINISTRATION

(AS OF JANUARY 1, 1977)

CAMPUS DESIGNATION

DC — DOWNTOWN CAMPUS
 KC — FRED H. KENT CAMPUS
 DA — DISTRICT ADMINISTRATION
 NC — NORTH CAMPUS
 SC — SOUTH CAMPUS

ABEL, MARGARET	Director, Continuing Education	DC
B.A., State University of New York at Oswego; M.Ed., Ed.S., University of Florida		
ADAMS, E. BEVERLY	Communications, Speech Therapy	KC
B.S., Georgia State College for Women; M.A., University of Florida		
ALFORD, JAMES D.	Director, Industrial and Trade Education	NC
B.S., Tuskegee Institute; M.Ed., Florida A & M University		
ALLEN, ELEANOR C.	Art	SC
B.A., The College of William and Mary in Virginia; M.F.A., The George Washington University		
ALLEN, WALTER G., JR.	Business	KC
B.S., Auburn University; M.B.A., Ed.D., University of Florida		
ALTHOFF, F. DANIEL	Communications	DC
B.A., M.A., Florida State University		
ANDERSON, PATRICK R.	Criminal Justice	SC
B.A., Furman University; M.Div., Southwestern Baptist Theological Seminary; M.A., Sam Houston State University		
ARCURI, THOMAS	Accounting	SC
A.A., Indian River Junior College; B.S., M.Ed., University of Florida		
ARMEL, KAREN	Music	SC
B.F.A., M.Ed., University of Florida		
AXELBERG, ANNE E.	High School Credit (Mathematics)	DC
B.S., Rutgers, The State University of New Jersey		
AUSTIN, ROBERT S., JR.	Fiscal Officer	DA
B.S., Jacksonville University; C.P.A., State of Florida		
BADGER, SOLOMON L., III	Counselor	SC
B.S., M.Ed., Florida A & M University; Ed.D., Nova University		
BAILEY, CLARE C.	Division Chairman, Natural Sciences, Mathematics and Physical Education	NC
B.S., M.S., Ph.D., University of Florida		

164 / FACULTY AND ADMINISTRATION

BAILEY, WILLIAM F. B.S., Concord (W.Va.) State College; M.A.T., University of North Carolina at Chapel Hill	Physical Science	SC
BAIN, MARCIA J. B.A., M.A., Georgia State University	Mathematics	NC
BAKER, MARTINEZ	Executive Director, Field Services	DA
BALLARD, FRANCIS B. B.S., M.S., Illinois State University; Ed.S., Florida State University	Business	NC
BANICKI, ALOIS J. B.S., Western Michigan University; M.A., Eastern Michigan University	Communications	SC
BARNETT, CLARICE H. Diploma, Georgia Baptist Hospital School of Nursing, Atlanta, Georgia	Nursing	NC
BARRETT, LAWRENCE W. Vocational Certificate, State of Florida	Plumbing and Pipe Fitting	DC
BATES, JAMES W. A.B., Birmingham Southern College; M.S.L.S., University of North Carolina at Chapel Hill	Director, Learning Resources	NC
BEARDEN, JOAN L. B.A., Tulane University; M.S.L.S., Louisiana State University and Agricultural and Mechanical College	Librarian	KC
BEASLEY, GEORGIA B. B.S., M.S., Northwestern State University (La.)	Child Care Services	NC
BEAUDOIN, ADRIEN P. B.Ed., M.Ed., Keene (N.H.) State College; Ph.D., University of Alabama at Tuscaloosa	Communications	KC
BENNETT, DELPHIA M. B.S., M.Ed., Florida A & M University	Biological Science	DC
BERTSCH, JEFFREY C. B.S.F.S., Georgetown University; M.S., Florida State University	Social Science	SC
BEST, CONSTANCE J. B.S., North Carolina College; M.S., Indiana University	Nursing	NC
BLACKWELL, MELBOURNE D., JR. B.S., M.M., East Carolina University; Ph.D., Florida State University	Music	SC
BLADEL, DIANE N. B.Ed., University of Miami; M.A., Florida State University	Communications	KC
BLADEL, JOHN P. B.A., University of Notre Dame; M.B.A., University of Miami	Business	SC
BLAY, MICHAEL S. B.S., M.Ed., University of Florida	Accounting	SC
BLESH, PAUL K. B.S., Syracuse University	Assistant Director, Occupational Education	SC
BOATENG, ALFRED K. B.S., M.A., Andrews University (Mich.); Ph.D., Purdue University	Biological Science	NC
BOHLER, GEORGE S. B.S., M.S., Florida State University	Social Science	NC

BONNEVILLE, BRUCE V. B.S., B.A., University of Florida	Auditor	DA
BORDEAUX, RICHARD H. B.A., M.A., Florida State University	Communications	KC
BORDEN, JUNE C. B.S.N., M.S.N., University of Alabama	Nursing	NC
BORNE, WILLIAM G. Vocational Certificate, State of Florida	Machine Shop	DC
BOSWELL, ERNESTINE D. B.S., Tuskegee Institute; M.S., Florida State University	Nursing	NC
BOUCHER, FREDERICK H. B.A., University of Tulsa; M.A., Teachers College, Columbia University; M.Ed., University of Florida	Physical Science	SC
BOUCHER, SARA P. B.A., Lake Forest College; M.A.T., Jacksonville University	Humanities	SC
BOWMAN, LUTHER J., SR. A.B., Indiana University; M.A.E., University of Florida	Mathematics	KC
BOYLES, BILLY O. B.A., University of Texas at El Paso; M.J., University of Texas at Austin	Associate Director, Information Services and Publications	DA
BRADFORD, BARBARA R. B.S., Florida State University; M.Ed., University of Florida; Ed.S., Florida State University	Business	SC
BREDA, ANTHONY Vocational Certificate, State of Florida	Diesel Mechanics	DC
BREEN, ROGER E. B.S., Boston College; M.A., Teachers College, Columbia University	Mathematics	DC
BRICKELL, GRANT R. B.E., Western Illinois University; M.S., Purdue University	Communications	SC
BRINKLEY, GLORIA J. B.S., Stetson University; M.A., Presbyterian School of Christian Education	Business	NC
BRINKLEY, HARRY J. B.S.A., M.S.A., University of Florida	Biological Science	KC
BROWN, CORRINE B.A., M.S., Florida A & M University; Ed.S., University of Florida	Developmental Education	NC
BROWN, DANIEL D. B.S., University of Maryland; M.Ed., Ed.S., University of Florida	Social Science	SC
BROWN, HORACE A.A., North Florida Junior College; B.S., Florida A & M University; M.S., Southern University and A & M College	Physical Science	KC
BROWN, MARIAN T. A.B., Bennett College; M.M.E., D.M.E., Indiana University	Humanities	SC
BROWNETT, THELMA D. B.F.A., Wesleyan Conservatory, Macon, Georgia; M.F.A., University of Georgia	Art	SC

166 / FACULTY AND ADMINISTRATION

BROWNING, THOMAS G. B.S.B.A., M.Ed., University of Florida	Director, Business Related Programs	NC
BRUCE, JOHNNY W. B.S.E., M.S.E., Arkansas State University	Biological Science	KC
BRUNNER, ROBERT J. B.A., Heidelberg College; M.A., University of Oklahoma; M.S., Syracuse University	Librarian (Media)	DC
BRYANT, EZEKIEL W. B.S., Bethune-Cookman College; M.Ed., Boston University; Ed.D., Nova University	Provost	NC
BULLARD, WILLIE B.S., Bethune-Cookman College	High School Credit (Social Science)	DC
BURNETT, JUDITH J. B.S., M.Ed., University of Southern Mississippi	High School Credit (Business)	DC
BURROWS, JIMMIE L. B.S., Tennessee Technological University; M.A., George Peabody College for Teachers	Business Education	NC
BURROWS, WILLIAM D. B.M.E., University of Florida; M.A., University of Iowa; Ph.D., University of Alabama at Tuscaloosa	Data Processing	NC
BURT, JOE E. B.M., Samford University; M.M., Northwestern University	Humanities	SC
CACCIOLA, ROSEANN M. B.A., Tennessee Wesleyan College; M.A., Ph.D., Vanderbilt University	Director, Faculty Affairs	DC
CALDWELL, JOSEPH H. B.S., M.S., Florida State University; Ed.S., University of Florida; Ed.D., Nova University	Dean, Student Development	SC
CALLENDER, JAMES M. A.A., Lamar University; B.S., United States Naval Academy; M.S., The George Washington University; Ph.D., University of Florida	Assistant to the Vice President for Campus Operations	DA
CARMICHAEL, BOBBY J. B.B.A., Eastern New Mexico University; B.B.A., University of North Florida; M.B.A., University of Arkansas; C.P.A., State of Florida	Accounting	SC
CARTER, ALPHONSO B. B.S., Florida A & M University; M.S., Rutgers, The State University of New Jersey	Mathematics	NC
CARTER, BETTY A. B.A., Goucher College; M.Ed., University of Florida	Developmental Education	SC
CARTER, DELPHENIA M. B.S., M.Ed., Florida A & M University	Reading	DC
CASWELL, CHARLOTTE Y. B.A., Jacksonville University; M.Ed., University of Florida	Librarian	KC
CAULFIELD, HUGH J. A.A.S., Queensborough Community College, Bayside, N.Y.; B.B.A., Pace University; M.P.A., John Jay College of Criminal Justice, City University of New York	Fire Science	SC
CHANDLER, GWENDOLYN J. B.S., Alabama State University; M.S., Catholic University of America	Librarian	SC

CHRISTOPHER, MILDRED M. B.S., Edward Waters College	High School Credit (English)	DC
CHRISTOFOLI, LUTHER B. A.B., Newberry College; M.A., Auburn University; Ed.D., University of Florida	Dean, Academics	NC
CLELAND, JAMES M. B.S., Presbyterian College; M.S., Clemson University	Director, General Studies	DC
CLELAND, SHARON E. B.S., M.S., University of Tennessee at Knoxville	Communications	NC
COBB, ELIZABETH M. B.S., Edward Waters College; M.Ed., Florida A & M University; Ed.D., Nova University	Dean, General Studies	DC
COLE, JAMES NATHAN B.S., Florida State University; M.P.A., Bernard Baruch College, City University of New York	Director, Criminal Justice and Fire Science	SC
COLE, RICHARD L. B.S., Edward Waters College	Business	DC
CONRAD, CRAIG M. B.A., M.A., University of South Florida	Physical Science	SC
COOK, LENDA H. B.S., West Texas State University; M.A.T., University of North Carolina at Chapel Hill	Biological Science	NC
COOK, MARY S. B.S., M.A.C.T., Auburn University	Child Care Services	NC
CORBITT, SARAH C. B.S., M.Ed., Florida A & M University; Ed.S., Florida State University	Biological Science	DC
CORDIER, DOUGLAS C. B.S., M.A., Eastern Kentucky University	Physical Education	NC
COSBY, JON P. B.A., M.A., Western Kentucky University; Ed.D., Nova University	Dean, Academics	SC
COTTON, H.D. B.S., Florida Southern College; M.A., Middle Tennessee State University; Ed.D., University of Alabama at Tuscaloosa	Dean, Student Development	NC
COULSON, DONNA C. B.A., King College; M.S., Florida State University	Librarian	KC
COX, ERNESTINE B. B.S., M.Ed., Florida A & M University	Adult Basic Education	DC
CROCKETT, JIMMY R. B.S., Florence (Ala.) State University; M.A., Middle Tennessee State University	Physical Science	SC
CRUSE, VERA W. Diploma, Brewster Methodist Hospital School of Nursing, Jacksonville, Florida; B.S., M.Ed., Florida A & M University	Nursing	NC
CRUTCHFIELD, FLORENCE P. A.B., University of North Carolina at Chapel Hill	High School Credit (Mathematics)	DC
CUSACK, JOSEPH B., III B.S., East Tennessee State University; M.A., Appalachian State University	Associate Dean, Occupational and Adult-Continuing Education	DA

168 / FACULTY AND ADMINISTRATION

DANIEL, JOAN M. B.A., Morris Brown College	High School Credit (English)	DC
DANIEL, RALPH C., JR. B.A., M.A., University of South Florida; Ed.S., Florida State University	Counselor	NC
DAVIDSON, DAVID L. B.A.Ed., M.Ed., University of Mississippi	Social Science	KC
DAVIS, BARBARA G. B.S.N.Ed., DePaul University; M.S., Case-Western Reserve University	Nursing	NC
DAVIS, BONNIE J. B.S.N., Duke University	Nursing	NC
DAVIS, ELIZABETH W. B.S., Florida State University	Home Economics	KC
DeGOURSEY, LEO R. Vocational Certificate, State of Florida	Printing and Graphic Arts	NC
DELLINGER, HARRY V. B.S., M.A., Western Carolina University; Ed.D., University of Southern Mississippi	Business Related	NC
DeLOACH, HENRY Vocational Certificate, State of Florida	Automotive Emission Control	DC
DEMOTS, CAROLYN J. B.S.N., Florida State University; M.N., University of Florida	Nursing	NC
DENSON, WILLIAM H., III B.A., Florida State University; M.S., University of Southern Mississippi	Communications	NC
DeSIMONE, MARILYN G. B.A., Stetson University; M.A.T., Jacksonville University	Communications	KC
DETERS, MARCELLA D. B.S., State University of New York College at Cortland; M.A., Teachers College, Columbia University	Physical Education	SC
DEWERD, GAY E. B.S., Marquette University; M.S., University of Wisconsin at Milwaukee	Dental Hygiene	NC
DIFFIE, GRANVILLE P. B.S., University of Maryland, M.Ed., Ed.S., Ed.D., University of Florida	Psychology	KC
DIGGETT, HAROLD W. Vocational Certificate, State of Florida	Air Conditioning; Refrigeration and Heating	NC
DINKINS, BRUCE K. B.M., University of Tampa; M.M., New England Conservatory of Music	Music	SC
DOBY, WILLIAM C. B.S., United States Naval Academy; B.S.E.E., United States Naval Postgraduate School; M.S., Rochester Institute of Technology; Ed.S., Ph.D., University of Florida	Engineering	SC
DODSON, HARRIETTE Y. A.A., North Florida Junior College; B.A., M.A., Florida State University	Communications	KC
DOLLINGER, RICHARD E. B.S., United States Naval Academy; M.S., Ed.S., Florida State University	Director, Engineering and Related Education	NC

DONNELLY, VIRGINIA A. B.S., Boston College; M.S., Catholic University of America	Nursing	NC
DOUGLASS, CHARLES G. B.A., Gettysburg College; M.A.T., Rollins College	Social Science	SC
DREHER, DEBORA A. B.A., M.A., New York University	Humanities	SC
DROST, KENNETH W. B.S., M.S., Louisiana State University and Agricultural and Mechanical College	Physical Education	SC
DRUM, JERRY B. A.B., Lenoir Rhyne College; M.A., Appalachian State University; Ed. D., University of Alabama at Tuscaloosa	Social Science	DC
DUMBLETON, DUANE D. B.S., University of Wisconsin; M.S., Syracuse University; Ed.D., University of Georgia	Social Science	SC
DUNAGAN, MARIE E. B.S., M.S., Florida State University	Librarian	SC
DYER, JOHN L. B.S., Springfield College; M.S., Syracuse University	Business	SC
ELLIS, PATRICIA B.S., Boston State College; M.Ed., College of William & Mary in Virginia	Individualized Studies	SC
ENG, CHOOHUA J. A.A., Hiwassee College; B.S., Tennessee Wesleyan College; M.M., University of Tennessee at Knoxville	Data Processing	NC
ESKRIDGE, NORFLEET W. B.S., M.A., Appalachian State University	Physical Education	KC
EVERETT, INDINESE C. Vocational Certificate, State of Florida	Cosmetology	KC
FARMER, JOHN E. B.A., M.Ed., University of Florida; Ed.D., Nova University	Dean, Student Development	KC
FARRIS, JULIAN E. B.A., Jacksonville University; M.A., Florida State University	Humanities	SC
FARSHING, DONALD, JR. B.S., United States Naval Academy; B.S.A.E., United States Naval Postgraduate School; M.S., Stevens Institute of Technology	Engineering	NC
FEARS, RUBEL G. B.A., M.A., Mississippi State University	Communications	NC
FERRY, STELLA V. Vocational Certificate, State of Florida	Cosmetology	KC
FINCH, OLIVER R. B.S.E., Georgia Southern College; M.A., George Peabody College for Teachers; Ph.D., University of Alabama at Tuscaloosa	Provost	SC
FINEGOLD, MIRIAM T. A.A., B.A., Jacksonville University; M.S., Florida State University	Nursing	NC
FISHER, LINDA M. A.B., Wheaton College; M.A., Boston University	Humanities	KC

170 /FACULTY AND ADMINISTRATION

FITZGERALD, EDWARD E. B.A., M.S., Louisiana State University and Agricultural and Mechanical College	Director, Learning Resources	KC
FLEMING, HARRY E. B.S., M.S., M.Phil., University of Southern Mississippi	Social Science	SC
FLOURNOY, BEAULAH M. B.A., Bethune-Cookman College; M.A., University of Florida	Social Science	DC
FLYNN, AUDREY L. B.S., M.A., Florida State University	Child Care Services	NC
FOWLER, WARREN M. Vocational Certificate, State of Florida	Marine Electricity	DC
FRIEDMAN, MARSHALL R. B.S., University of Pennsylvania; M.Ed., Ed.S., University of Florida	Business	SC
FRITTS, MILDRED S. B.S., Auburn University; M.A.T., Jacksonville University; Ed.S., Ed.D., Mississippi State University	Communications	NC
FROBERG, JAMES W. B.S., M.S., Florida State University	Librarian (Media)	SC
GAGLIARDI, HENRY M. B.S., St. Louis University; M.S., Florida State University; D.D.S., St. Louis University	Director, Dental Programs	NC
GALLON, DENNIS P. B.S., Edward Waters College; M.S., Indiana University at Bloomington; Ed.S., Ph.D., University of Florida	Business	KC
GANT, JANE D. B.S., M.S., University of Alabama	Chemistry	NC
GARRETT, ROBERT I., JR. B.S., Middle Tennessee State University; M.A., George Peabody College for Teachers	Social Science	SC
GAY, ELEANOR J. B.S., M.A., Florida A & M University	Equal Access/Equal Opportunity Coordinator	DA
GEIS, LAWRENCE R. B.S., United States Naval Academy	Assistant to the President for Business and Industry Relations	DA
GENTRY, ROBERT B., JR. B.S., M.A., University of Tennessee at Knoxville	Division Chairman, Communications and Humanities	KC
GESELL, RICHARD C. M.A.T., Rollins College; J.D., University of Wisconsin at Madison	Business	SC
GIBSON, LOIS D. B.S., Tuskegee Institute; M.S., Boston University; Ed.D., Nova University	Director, Nursing	NC
GIMBEL, RICHARD W. A.B., Princeton University; M.A., Middlebury College	Humanities	NC
GIRARDEAU, MATILDA L. B.S., North Carolina College; M.A.T., University of North Carolina at Chapel Hill	Biological Science	NC
GLEIM, JAMES K. A.B., Indiana University; M.A., Georgetown University; Ph.D., University of Pennsylvania	Physical Science	KC

GOLIGHTLY, THELMA E.	Communications	NC
A.B., Mary Baldwin College; M.A., University of Wisconsin at Madison		
GOOCH, ANN M.	Humanities	NC
B.M.E., Florida State University; M.Ed., University of Florida		
GOODELL, BARBARA ANN	Librarian	KC
B.A., College Misericordia, Dallas, Pennsylvania; M.L.S., University of Pittsburgh		
GRANLUND, ROY D.	Mathematics	SC
B.S., Jacksonville University; M.Ed., University of Florida		
GRANT, ALICE W.	Developmental Education	NC
A.B., M.Litt., University of Pittsburgh; Certificate in African Studies, Northwestern University		
GRANT, ANTONIA M.	Communications	SC
B.A., Florida A & M University; M.A., Florida State University		
GRAY, HORTENSE W.	Counselor	KC
B.A., Fisk University; M.A., Columbia University		
GREEN, JULIUS C.	Director, Information Services and Publications	DA
A.B., University of North Carolina at Chapel Hill		
GREEN, KIPTAS L.	Counselor	DC
B.S., Edward Waters College; M.Ed., Florida A & M University		
GREEN, LAWTON R.	Philosophy	KC
B.S., M.A., Florida State University		
GREENE, CURTIS P.	Psychology	NC
B.S., M.A., Ball State University		
GREENMAN, GENE B.	Nursing	NC
Diploma, St. Luke's School of Nursing, Jacksonville, Florida		
GREER, ELLA M.	Nursing	NC
A.S., Louisburg College; B.S.N., Duke University; M.S., Florida State University		
GRIFFEY, ELIZABETH BOOTE	Communications	SC
B.A., Florida State University; M.A., Arizona State University		
GRIFFEY, LARRY R.	Mathematics	SC
B.S., M.A., Austin Peay State University		
GRIFFIN, POPE	Director, Learning Resources	DC
B.S.P.E., M.P.H., University of Florida; Ed.D., Nova University		
GRIMES, THEODORE R.	Librarian	NC
B.M., Eastman School of Music, University of Rochester; M.L.S., Syracuse University; M.M., University of Tulsa		
GRISWOLD, ARDIS G.	Nursing	NC
Diploma, St. Alphonsos Hospital School of Nursing, Boise, Idaho		
GUSKY, FRANK C.	Social Science	DC
A.B., Findlay (Ohio) State College; M.Ed., University of Florida		
HADWIN, ALICE R.	Counselor	NC
B.A., Saint Mary College, Xavier, Kansas; M.Ed., University of Florida; Ed.D., Nova University		

172 / FACULTY AND ADMINISTRATION

HADWIN, DAN W.	Counselor	SC
B.A., Louisiana Tech University; M.Ed., University of Florida; M.Ed., Louisiana State University and Agricultural and Mechanical College; Ed.D., Nova University		
HALEY, AIMEE C.	Accounting Officer	DA
B.S., Jacksonville University; C.P.A., State of Florida		
HALL, DOLORES L.	Mathematics	NC
B.S., M.Ed., Florida A & M University		
HALL, JENE	Mathematics	KC
B.S.Ed., Louisiana Tech University; M.A., Louisiana State University and Agricultural and Mechanical College		
HALLER, MARTHA	Engineering	SC
A.A., Paducah Community College, Paducah, Kentucky; B.S., University of North Florida		
HALLORAN, PAUL	Distributive and Mid-Management Education	KC
B.A., Jacksonville University; M.S., State University of New York Maritime College		
HAMMOND, CARRIE B.	Nursing	NC
Diploma, Brewster Methodist Hospital School of Nursing, Jacksonville, Florida		
HAMMOND, MARY M.	High School Credit (Reading)	DC
B.S., Florida Memorial College; M.Ed., Florida A & M University		
HANLEY, JAMES R., JR.	Physical Science	SC
B.S., University of Rhode Island; M.S., University of Illinois		
HANSKNECHT, THOMAS J.	Air Conditioning, Refrigeration and Heating	NC
Vocational Certificate, State of Florida		
HARDIN, PAULA B.	Nursing	NC
Diploma, The Good Samaritan Hospital School of Nursing, Lexington, Kentucky		
HARIMA, HECTOR	Biological Science	SC
B.S., M.S., Ph.D., University of Alabama at Tuscaloosa		
HARMAN, PAULINE J.	Psychology	KC
A.B., Marshall University; B.S., M.S., University of Tennessee at Knoxville		
HARPER, MARY L.	Home Economics (High School Credit)	DC
B.S., Florida A & M University; M.S., Florida State University		
HART, SHERMAN C., JR.	Air Conditioning, Refrigeration and Heating	DC
Vocational Certificate, State of Florida; Diploma, Air Conditioning/Refrigeration, Florida Industrial Commission		
HARTNIG, LYNDA	Business	NC
B.S., M.Ed., University of Florida		
HARTSHORN, DAVID L.	Director, Student Financial Aid	KC
B.S., United States Naval Academy; M.A., The George Washington University		
HARTWELL, ROSANNE R.	Director, Personnel Services	DA
B.S., Florida State University; M.Ed., University of Florida		
HASKEW, DONALD C.	Mathematics	SC
B.S.E., Central Arkansas University; M.Ed., University of Arkansas		
HATCHER, HAROLD S.	Business Affairs Officer (District)	DA

HAWLEY, PATRICIA A. B.S., University of Bridgeport (Conn.)	Nursing	NC
HAYNES, JOHN A. B.A., M.Ed., University of Florida	Psychology	SC
HEATH, WILBUR G. B.A., Atlantic Christian College; M.A., Appalachian State University	Developmental Education	NC
HENDERSON, THOMAS M. Vocational Certificate, State of Florida	Industrial Electronics	DC
HENDRICKS, VIRGINIA L. A.B., University of Notre Dame; M.A., Case-Western Reserve University; Ed.D., Nova University	Humanities	DC
HILL, JONATHAN H. B.M., Stetson University; M.Ed., Florida Atlantic University; Ed.D., Nova University	Director, Student Activities	NC
HODGKINS, H.B. B.A., M.Ed., University of Florida	Business Affairs Officer (Downtown Campus)	DA
HOLLAND, EDNA A. B.A., M.A.T., Jacksonville University	Communications	SC
HOLLAND, GILBERT W. Vocational Certificate, State of Florida	Major Appliance Repair	DC
HOLMES, BILLIE J. B.S., Edward Waters College; M.Ed., Florida A & M University	High School Credit (Mathematics)	DC
HOLZENDORF, JOYCE G. B.S., Florida A & M University; M.A., North Carolina Central University	Social Science	NC
HOOP, IRIS C. B.S., M.S., Indiana State University	Communications	KC
HOUGHTON, MICKIE J. Diploma, St. Luke's Hospital School of Nursing, Jacksonville, Florida; B.S., University of North Florida	Nurse Assistant	NC
HOWARD, MARK S. B.A., M.F.A., Florida State University	Art	SC
HOWARTH, CHESTER D. B.S., Massachusetts State Teachers College; M.S., Florida State University	Director, Distributive and Mid-Management Education	KC
HOWELL, JOHN N. B.S., United States Military Academy; M.A., The George Washington University	Mathematics	KC
HUTCHINGS, PATRICIA W. A.A., Lake City Community College; B.S., M.A., Florida State University	Communications	NC
HUTCHINSON, JOHN M., JR. B.S.M.E., Auburn University; M.S., Ed.S., Florida State University	Engineering	NC
HUTSON, CALVIN E. Vocational Certificate, State of Florida	Cabinetmaking	DC
ISRAEL, KENNETH D. B.A., Berea College; M.A., George Peabody College for Teachers; Ph.D., University of Southern Mississippi	Social Science	SC

174 /FACULTY AND ADMINISTRATION

JACKSON, LUCINDA G. B.S., Edward Waters College; M.Ed., Florida A & M University	Psychology	KC
JACKSON, SAMUEL A.B., Howard University; M.A., Columbia University	Developmental Education	SC
JAMES, ISIAH, JR. B.S., Florida A & M University; M.S., Florida Atlantic University	Director, Developmental Education	DC
JAMES, RHUDINE M. B.S.N., North Carolina A & T State University; M.S., University of North Carolina at Chapel Hill	Nursing	NC
JAYASWAL, MANINDRA C. B.Sc., Allahabad (India) University; M.S., University of Florida	Chemistry	NC
JENKINS, ETHEL L. A.A., Jacksonville University; B.A., University of Florida; M.A., Appalachian State University; Ed.D., Nova University	Psychology	SC
JOCA, JOHN G. B.S., M.A.Ed., University of Florida	Counselor	DC
JOHNSON, FRANK Vocational Certificate, State of Florida	Truck Mechanics	DC
JOHNSON, INEY P. B.S., Jacksonville University; M.Ed., University of Florida	Division Chairman, Mathematics and Sciences	KC
JOHNSON, MARY RUTH B.S., Tennessee Technological University; M.A., Appalachian State University	Counselor	NC
JONES, DAVID Q. B.A., Albion College; M.A., University of Michigan	Social Science	SC
JONES, EDNA M. B.S., Florida State University; M.S.N., University of Alabama	Nursing	NC
JONES, MARVIN M. B.S., M.S., Purdue University	Engineering	NC
KADEN, MAXINE M. B.A., Stetson University; M.Ed., University of Florida	Counselor	DC
KEENAN, HARRY C. B.A., University of Florida	Adult Basic Education	DC
KEHRT, IRENE M. B.A., Hunter College of the City University of New York; M.A., University of Michigan	Physical Education	KC
KELLY, JOSEPH D. B.S.E., M.A.E., Kent State University	Communications	DC
KENNEDY, ROBERT A. A.B., Millsaps College; B.S., University of Alabama; M.A., George Peabody College for Teachers; Ed.D., Florida State University	Humanities	NC
KERLEY, DOUGLAS W. B.M., M.M., Florida State University	Music	SC
KEY, ERSKINE C. B.S., Troy State University; M.S., Ed.D., George Peabody College for Teachers	Social Science	SC

KILGORE, CHARLES F. B.A., Florida Christian College; M.Ed., University of Tennessee at Chattanooga; M.A., Ph.D., Emory University	Social Science	KC
KING, DOROTHY P. B.S., M.Ed., Florida A & M University	Biological Science	SC
KING, IONA G. B.S., Edward Waters College	Child Care Services	NC
KING, MABLE P. A.B., Johnson C. Smith University; M.Ed., Florida A & M University	Librarian	DC
KITCHINGS, EARL S. B.S., Florida A & M University; M.A., Columbia University	Dean, Student Development	DC
KOLESAR, JOHN C. B.S., St. Joseph's College, Rensselaer, Indiana; M.S., Southern Illinois University	Physical Science	NC
LA BELLO, ANTHONY J. B.S., St. Francis College; M.Ed., University of North Florida	Mathematics	DC
LAND, MARY ELIZABETH A.B., University of North Carolina at Chapel Hill; M.A., East Carolina University	Music	SC
LANE, ROBERT W. B.S., University of Illinois; M.S., South Dakota School of Mines and Technology	Physical Science	SC
LaPRADE, RAYMOND C. B.S., Florida State University	Engineering	NC
LARKINS, IRIS D. B.S., Edward Waters College; M.Ed., Florida A & M University	Adult Basic Education	DC
LEE, ETHEL R. B.S., Duke University; M.A., Jacksonville University	Nursing	NC
LEE, MAY F. B.S., Edward Waters College; M.A.T., Indiana University	Social Science	NC
LENNERTZ, MILDRED A. B.S.H.E., University of Georgia; M.Ed., University of Mississippi; Ed.D., Nova University	Director, Home Economics Education	KC
LaVASSEUR, MICHAEL LEE B.A., M.A., University of South Florida	Social Science	NC
LEWIS, WARREN LEE A.A., Wilbur Wright Junior College (Chicago); B.S.M.E., Illinois Institute of Technology	Drafting and Related Trades	DC
LILLY, FRANCES H. B.S., M.S., Florida State University	Nursing	NC
LISTER, HARRY M. B.A., Arkansas Polytechnic University; M.A., Texas Christian University	Social Science	SC
LLOYD, ROGER M., JR. B.S., East Tennessee State University; M.S., University of Mississippi	Biological Science	SC
LOCKETT, CORNELIUS R., JR. B.S., M.Ed., Florida A & M University	Director, High School Programs and External Centers	DC

176 /FACULTY AND ADMINISTRATION

LOFTUS, EDSON G: B.A., Jacksonville University; M.A.T., University of Montevallo (Alabama)	Physics	NC
LOFTUS, JOHN R., SR. B.S., Florida State University; M.Ed., A.M.E., University of Mississippi	Director, Evening Campus	DC
LUBAS, HELEN S. B.S., M.S., Florida State University	Nursing	NC
LUCAS, WILLIE LEE B.S., Tennessee State University; M.A.L.S., University of Michigan	Librarian	NC
LUCK, CAROLYN E. B.S., M.Ed., University of Florida	Director, Records	DA
LUTZ, JUDITH G. B.A., University of Florida; M.C. Ed., Presbyterian School of Christian Education	Director, Child Care Services	NC
LYONS, WILLIAM E., SR. B.A., Harvard University; M.A., University of Florida	Distributive and Mid-Management Education	KC
MAAFO, GLADYS L. B.S., North Carolina College; M.S., University of North Florida	Nursing	NC
MacDONALD, JOHN M. B.S., M.A., East Tennessee State University	Communications	KC
MAHAN, RICHARD M. A.A., Orlando Junior College; B.S., Florida Technological University; M.S., University of Florida	Biological Science	NC
MALLOY, RACHEL H. B.S., Edward Waters College; M.Ed., Florida A & M University	High School Credit	NC
MARTIN, WILLIAM S., JR. B.S., William Carey College; M.A., University of Southern Mississippi	Social Science	SC
MARVES, RAYMOND C. B.S., Georgia Southern College; M.S., Florida State University	Accounting	KC
MASSEY, MURPHEY W., JR. B.A., Emory University; Ph.D., University of Georgia	Chemistry	NC
MAYES, JIM L. B.A., M.A., University of Arkansas	Social Science	KC
McBRIDE, LUELLA W. B.S., M.Ed., Florida A & M University; Ed.S., Florida State University	Counselor	SC
McBRIDE, RICHARD B.S., Florida A & M University; M.Ed., Florida State University	Automotive Mechanics	DC
McCLURE, SARAH E. A.S., Florida Junior College at Jacksonville	Medical Assisting	NC
McCOY, PAUL O. B.S., Kansas State Teachers College; M.S., Louisiana State University and Agricultural and Mechanical College	Director, Military Programs	KC
McCURLEY, LYNDLE E. B.S.E., Bethel College; M.S.E., Arkansas State University	Physical Education	SC

McDONALD, MARYANNA S. B.S.C., M.Ed., University of Mississippi	Counselor	KC
McELREATH, SUSAN D. A.B., Wesleyan College; M.S., Georgia State University	Biological Science	NC
McFARLAND, BILL W. B.A., M.A., University of Arkansas; Ed.S., Florida State University	Director, Student Activities	DC
McGRATH, WILLIAM F. B.S.E.E., United States Naval Postgraduate School; B.S.M.E., Auburn University; M.A.T., Jacksonville University	Mathematics	SC
McGRATH, WILLIAM T. B.B.C., University of Florida	Engineering Technology	NC
McKINNON, MARVA A.A., Edward Waters College; B.S., Florida A & M University; M.B.A., University of North Florida	Director, Special Federal Programs	DC
McLAIN, THELMA T. B.S., M.S., M.Ed., Florida A & M University	Business	DC
McMILLAN, PAUL M. B.A., M.A., East Texas State University	Social Science	NC
MELLIN, HARRY S. B.S., Purdue University; M.A., Ball State University	Mathematics	KC
MERRIAM, CHARLES S. B.S., M.S., Florida State University	Dean, Occupational Education	KC
MILEY, VERONA B.S., Stetson University; M.A., Appalachian State University	Counselor	KC
MILLER, CARL K., JR. B.S., M.S., Pennsylvania State University; Ed.D., Florida State University	Dean, Occupational Education	SC
MILLER, KERMIT C. B.A., M.Ed., Ph.D., University of Mississippi	Provost	KC
MILLER, LILLIAN W. B.S., East Carolina University; M.S., Ph.D., Purdue University	Biological Science	SC
MILLS, ERIC R., JR. B.S.A., University of Florida; M.B.A., University of Mississippi; Ed.S., Ed.D., University of Florida	Dean, Occupational and Adult-Continuing Education	DA
MINOGUE, BERNARD B. B.S., University of Connecticut; B.S.N., Texas Christian University; M.Ed., Ed.D., North Texas State University	Associate Dean, Health Related Technology	NC
MOLENDIA, JOSEF L. B.A., M.A., Marquette University	Communications	KC
MONTS, LARRY H. B.S., Newberry College; M.A., George Peabody College for Teachers	Physical Education	KC
MOORE, C. SUE B.S.P.E., M.A., University of Mississippi	Speech and Drama	SC

178 / FACULTY AND ADMINISTRATION

MOORE, CHERRILYNN	Librarian	KC
B.A., Florida A & M University; M.S., Atlanta University		
MORAN, EMMA L.	Business	SC
B.S., West Virginia State University; M.A., New York University		
MORELAND, HENRY L.	Psychology	KC
B.S., Pembroke (N.C.) State University; M.S., Purdue University; Ed.D., University of Mississippi		
MORRIS, JOSEPH W.	Social Science	KC
A.A., Chipola Junior College; B.A., M.S., Florida State University; Ed.S., University of Florida		
MOSS, BEVERLY C.	Psychology	NC
B.S., Western Carolina University; M.A., Duke University		
MULLINS, JOHN Q.	Biological Science	SC
B.S., M.S., University of Tennessee at Knoxville		
MUNDELL, RALPH P.	Welding	NC
Vocational Certificate, State of Florida		
MURRAY, BOBBIE L.	Physical Science	KC
B.S., Florida State University; M.S.E., University of North Carolina at Chapel Hill		
MURRAY, CHARLES L.	Accounting	SC
B.S., M.Ed., University of Florida		
MURRAY, RUDOLPH	Welding	DC
Vocational Certificate, State of Florida		
MYERS, JAMES R.	Dean, Occupational Education	DC
B.A., Jacksonville University; M.S., Ed.S., Florida State University		
NAPIER, EDGAR C.	Provost	DC
B.S., William Carey College; M.C.S., Ed.D., University of Mississippi		
NELSON, GREGORY B.	Business	SC
B.S., Jacksonville University; M.S., Florida Institute of Technology		
NesSMITH, WILLIAM C.	Social Science	NC
B.S., M.Ed., University of Florida		
NICHOLSON, ROSE M.	Business	SC
A.A., Santa Fe Community College; A.S., St. Johns River Junior College; B.S., University of Florida; M.B.A., University of North Florida		
NORRIS, JAMES S.	Business	NC
B.A., Pennsylvania State University; M.A.T., Jacksonville University		
OATMAN, HERBERT R.	Planning and Project Officer	DA
B.C.E., University of Florida		
OGILVIE, SARA L.	Librarian (Technical Services)	KC
A.B., Wesleyan College; M.Ln., Emory University		
OLSON, SHARON L.	Biological Science	NC
B.S., Northern Michigan University; M.A., Western Michigan University		
ORR, ROBERT H.	Business Related	NC
B.S., Bethune-Cookman College; M.B.A., Atlanta University		

ORTH, JAMES R. Vocational Certificate, State of Florida	Welding	DC
OWEN, HAROLD JAMES, JR. B.A., M.A., State University of New York at Albany; Ph.D., University of Georgia	Vice President for Campus Operations	DA
PAASCHE, HELEN D. Diploma, St. Luke's Hospital School of Nursing, Jacksonville, Florida	Surgical Technician	NC
PADGETT, WAYNE R. B.S., M.A., Austin Peay State University; Ed.S., Ed.D., University of Florida	Social Science	KC
PARK, ALLEN G. B.S., University of Georgia; M.A., University of Alabama at Tuscaloosa	Mathematics	KC
PARSONS, PERCY L. B.S., M.Ed., Florida A & M University	Counselor	DC
PATTERSON, ELISE B.S., Massachusetts State College at Salem; M.A., Clark University, Worcester, Massachusetts	Business	KC
PATTERSON, GERALD R. B.S., M.A., University of Kentucky	Counselor	NC
PATTON, JON W. B.A., Jacksonville University; M.A., University of Tennessee at Knoxville	Humanities	NC
PELOUS, JOAN P. A.A., Florida Junior College at Jacksonville; B.A.E., M.Ed., University of North Florida	Home Economics	KC
PEREZ, RICARDO D.J., University of Havana, Cuba; M.A., Ph.D., University of Florida	Spanish	SC
PERRY, ROBERT A. Vocational Certificate, State of Florida	Gasoline Engine Repair	DC
PETERSEN, PHILLIP L. B.S., University of Florida; M.A., Northeast Missouri State University	Biological Sciences	SC
PETERSON, JOHN W. B.A., Florida Atlantic University; M.A., Appalachian State University	Director, Learning Resources	SC
PINE, SUE C. B.A., North Texas State University; M.A., University of Utah	Communications	SC
PLYMALE, JOHN R. B.A., Marshall University; M.S., University of Alabama	Biological Sciences	SC
POLLARD, R. MICHAEL B.A., M.A.T., Jacksonville University	Humanities	SC
POWELL, JOSEPH R. B.A., St. Bernard College, Cullman, Alabama; M.C.S., University of Mississippi	Biology	NC
POWERS, STEPHEN E., IV B.A., Rollins College; B.A., Southern Missionary College; M.A.T., Andrews University, Berrien Springs, Michigan	Mathematics	SC
POYTHRESS, TRAVIS R. Vocational Certificate, State of Florida	Steel Fabrication	DC

180 / FACULTY AND ADMINISTRATION

PREUSS, DOROTHY M. B.A., University of Northern Colorado; M.Ed., Oregon State University	Director, Student Activities	SC
PRICE, STEWART W. A.A., Florida Junior College at Jacksonville; B.A., M.Ed., University of North Florida; Ed.S., Florida State University	Construction Electricity	DC
PRIEST, MARY D. Diploma in Accounting, Massey Business College, Jacksonville, Florida; Vocational Certificate, State of Florida	Cosmetology	KC
PROBST, RICHARD F. B.A., M.S., Florida State University	Economics	KC
PUCKETT, KENNETH L., JR. B.S., M.S., Florida State University	Librarian	DC
RAINEY, ROBERT R., JR. B.A., Carson-Newman College; M.A., East Tennessee State University	Psychology	SC
RAULERSON, MARIAN P. B.A., Clarke College, Dubuque, Iowa; M.A., Loyola University; Ed.D., Nova University	Mathematics	SC
RAY, RUTH G. B.S., Tuskegee Institute; M.A., Hampton Institute	Counselor	KC
READ, KAREN B.A.E., University of Florida; M.Ed., Memphis State University	Communications	SC
REED, ELIZABETH C. B.A., State College of Arkansas; M.A., University of Arkansas	Communications	SC
REED, CHARLES E., JR. B.A., State College of Arkansas; M.A., University of Florida	Communications	SC
REESE, RUTH C. A.B., Hunter College of the City University of New York; M.Ed., University of Florida	Home Economics	KC
REHKOPF, WENDELL P. B.S., Michigan State University; M.Ed., University of Florida	Business	DC
RESPESS, RICHARD D. B.I.E., Georgia Institute of Technology; M.S., Florida State University	Dean, Business/Industrial Technology	NC
REYNOLDS, FRED C. A.A., St. Johns River Junior College; B.A., M.Ed., University of Florida	Communications	SC
RICE, RAY C. B.S., Lander College	Home Economics	KC
RICHARDSON, SARMAE S. B.S., Florida A & M University; M.A., Teachers College, Columbia University	Mathematics	NC
ROBBINS, GAY S. B.A., Centre College of Kentucky; M.A.T., Rollins College	Communications	KC
ROBERTSON, DONALD P. B.A., Rensselaer Polytechnic Institute; M.B.A., University of North Florida	Data Systems Officer	DA
ROBERTSON, RICHARD D. B.S., Syracuse University; M.B.A., The George Washington University	Data Processing	NC

ROBISON, PATRICK L. B.A., M.A., Western Kentucky University	Counselor	NC
ROEY, HOWARD C. B.S., Jacksonville University; M.A., Appalachian State University	Physical Education	NC
ROGERS, ROY V. Vocational Certificate, State of Florida	Sheet Metal	DC
RORER, SALLY M. B.A., Lynchburg College; M.S., University of Tennessee at Knoxville	Physical Education	NC
ROSENBERRY, BASIL D. B.S., M.Ed., St. Bonaventure University	Mathematics	SC
ROSSIE, A. NEWMAN B.A., M.A., Mississippi State University	Social Science	SC
ROURKE, ANNE B. B.A., Jacksonville University; M.A., University of Florida	Adult Basic Education	DC
RUPP, KEITH C. Vocational Certificate, State of Florida	Welding	NC
RUSSELL, CARETA R. B.S., Savannah State College; M.Ed., Florida A & M University	Communications	SC
RUSSOS, MILTON A. A.A., Indian River Community College; B.A., M.Ed., University of Florida; Ed.D., Nova University	Director, Student Activities	KC
RUTLEDGE, AUSTIN M., JR. B.A., Stetson University	Business Affairs Officer (North Campus)	DA
SAARE, E. JOHN B.S., Bradley University; M.A., University of Florida	Special Project Coordinator	KC
SAFFY, EDNA B.A., M.Ed., Ph.D., University of Florida	Communications	SC
SANFORD, ROBERT M. B.A., M.A., University of Florida	Dean, Academics	KC
SASSER, JOSEPH H. B.A., Jacksonville University; M.A., Florida State University	Social Science	KC
SCHAEFER, MARTHA G. B.A., M.A., Ed.D., University of Florida	Communications	NC
SCHENKEL, GILBERT J. B.S.F., University of Florida; M.S., Florida State University	Director, Evening Programs	NC
SCHICK, FRANK J. B.S., Auburn University; M.A., University of Alabama	Counselor	KC
SCHOMBERG, ORVILLE C. B.S., Colorado State University; M.S., Oklahoma State University; M.A., Colorado State College	Psychology	KC
SCHROEER, HOWARD J. B.S., Mankato State College; M.Ed., University of Florida; Ph.D., University of Alabama at Tuscaloosa	Business Affairs Officer (Kent Campus)	DA

182 / FACULTY AND ADMINISTRATION

SCHUPP, JAMES F.	Division Chairman, Fine Arts and Humanities	SC
B.F.A., Nebraska State Teachers College; M.A., University of Denver		
SCOTT, WILLIAM, JR.	Dean, Adult-Continuing Education	SC
B.S., Florida A & M University; M.A., Columbia University; Ed.D., Nova University		
SEITNER, ALFRED J.	Distributive and Mid-Management Education	KC
A.B., Dartmouth College; M.C.S., Amos Tuck School of Business Administration, Dartmouth College		
SESSIONS, BETTYE J.	Humanities	KC
B.A., Florida A & M University; M.A.T., Jacksonville University		
SHANKLIN, MARY E.	Business Related	DC
B.S., University of Florida; M.S., Florida State University		
SHANNAHAN, MARY K.	Nursing	NC
B.S., D'Youville College; M.N., University of Florida		
SHANNON, MARY L.	Communications/Humanities	DC
B.A., University of Florida; M.Ed., College of William & Mary in Virginia		
SHEA, LOUISE C.	Nursing	NC
A.B., B.S., College of St. Rose, Albany, New York; M.A., Teachers College, Columbia University		
SHEPPARD, L. WILLIAM	Criminal Justice	SC
B.S., M.S., Florida State University		
SHERIDAN, CHARLES L.	Biological Science	KC
A.B., Elon College; M.A., University of North Carolina at Chapel Hill		
SHERIDAN, RUBY M.	Home Economics	KC
B.S., M.Ed., University of North Carolina at Greensboro		
SHORE, ANNE C.	Developmental Reading/English	DC
B.A., M.Ed., Texas A & M University; Ed.D., University of Florida		
SIMMONS, BRENDA	Communications	NC
B.A., Bethune-Cookman College; M.A., Atlanta University		
SIMMONS, MARY F.	Librarian	DC
B.S., Jacksonville University; M.S., Florida State University		
SIMONI, PATRICIA F.	Dental Assisting	NC
C.D.A., American Dental Assistant Association		
SINGH, RAM G.	Physics	NC
B.A., M.A., Government College, India; M.S., Punjab University; Ph.D., University of Florida		
SINGLETARY, EVA K.	Nursing	NC
Diploma, The Watts Hospital School of Nursing, Durham, North Carolina		
SINGLETARY, RICHARD J.	Humanities	KC
B.A., Jacksonville University; M.A., Southern Illinois University		
SISK, FAYE A.	Medical Laboratory Technology	NC
B.A., Agnes Scott College, Decatur, Georgia; M.T., Emory University Hospital		
SMITH, KENNETH M.	Biological Science	NC
B.S., Angelo State University, San Angelo, Texas; M.S., Montana State University		

SMITH, MARIE D. B.A., Jacksonville University; M.A., University of Florida	French	SC
SMITH, CLAUDE J., JR. A.B., Birmingham Southern College; M.A., University of Alabama at Tuscaloosa	Communications	SC
SNEED, ANNIE B. Diploma, Brewster Methodist Hospital School of Nursing, Jacksonville, Florida	Nursing	NC
SPEARS, JACKSON L. B.S., Bowling Green College of Commerce; M.B.A., University of North Florida	Business Affairs Officer (South Campus)	DA
STANDBERRY, JOHN L., JR. Vocational Certificate, State of Florida	Brick and Blocklaying	DC
STANLEY, JOHN G., JR. B.A., M.A.T., Jacksonville University	Director, Evening Programs	SC
STEGALL, CARROLL R. B.S., Maryville College, Tennessee; M.Div., Columbia Theological Seminary; M.A., Florida State University	Humanities	KC
STEIN, STANLEY W. A.B., University of Florida; M.A., New York University	Psychology	SC
STEWART, JANE H. B.A., M.Ed., Memphis State University	Counselor	SC
STEWART, SARA L. B.A., Florida A & M University; M.A., New York University	Communications	NC
STONER, JESSIE E. B.S., Florida State University; M.A., Memphis State University	Physical Education	SC
STORES, PATRICIA A.S., Florida Junior College at Jacksonville; B.S., Jacksonville University	Nursing	NC
STUCKMAN, JEFFREY A. B.S., M.A., Ohio State University; Ed.D., University of Florida	Director, Institutional Research	DA
STUDEBAKER, GENE H. B.S., Roanoke College	Criminal Justice	SC
STUKE, JOHN H. Vocational Certificate, State of Florida	Auto Mechanics	DC
SUMMERS, COLLIER S. B.A., University of South Florida; M.A., Appalachian State University; Ed.D., Nova University	Counselor	SC
SUMNER, JOHNNY G. B.S., M.A., University of Southern Mississippi	Engineering	NC
TAYLOR, DONNA H. B.S., Radford College; M.S., Virginia Polytechnic Institute and State University	High School Credit (Home Economics)	DC
TAYLOR, EVA L. B.S., Florida Technological University	Respiratory Therapy	NC
TAYLOR, JON T. B.S., Virginia Polytechnic Institute and State University; M.A., Appalachian State University; Ph.D., Florida State University	Communications	NC
TAYLOR, WILLIAM L.	Procurement Officer	DA

184 / FACULTY AND ADMINISTRATION

TERRELL, C. ROLAND B.S., Troy State University; M.A., Ed.D., University of Alabama at Tuscaloosa	Director, Educational Program Development University of Alabama at Tuscaloosa	DA
THOMAS, BILLY E. Vocational Certificate, State of Florida	Carpentry	DC
THOMAS, FRANCES P.	Executive Director, District Services	DA
THOMPSON, CAMILLA P. B.S., Florida A & M University; M.Ed., University of North Florida	Chemistry/Biology University of North Florida	KC
THOMPSON, DONALD E. B.A., Wayland Baptist College; M.M., Florida State University	Music Florida State University	SC
THOMPSON, KENNETH W. A.B., Dartmouth College; M.B.S., University of Colorado	Mathematics University of Colorado	NC
THOMSON, ALEXANDER Vocational Certificate, State of Florida	Welding	DC
TIDWELL, RUTHINE B.A., Benedict College; M.S., Florida State University	Social Science Florida State University	SC
TOLLI, ELLINOR B.A., University of Texas at Austin; M.S., Florida State University; J.D., University of Miami	Social Science Florida State University; University of Miami	SC
TOUCHTON, REGINALD F. B.A., M.Ed., University of Florida; Ed.D., Nova University	Division Chairman, Communications, Social Science and Developmental Education Nova University	NC
TRAPP, JACQUELYN D. B.S., University of Georgia; M.S., Florida State University	Medical Laboratory Technology Florida State University	NC
TRAUTMANN, PAUL C. B.A., M.A., University of Alabama at Tuscaloosa	Director, Business Education and TV Instruction University of Alabama at Tuscaloosa	DC
ULLOA, DERBY L. B.A., M.A., Florida State University	Art Florida State University	SC
VESSELS, SHIRLEY T. B.B.A., Georgia State University; M.B.A., University of Houston	Business University of Houston	NC
VOCKELL, FRANK W., JR. B.A., Miami University, Miami, Ohio; M.S., University of Cincinnati	Biological Science University of Cincinnati	KC
VonDOLTEREN, JOSEPH A. Vocational Certificate, State of Florida	Automotive Body Repair	DC
WALLACE, JOSEPH R. B.S., East Carolina University; M.A., Appalachian State University	Director, Testing Appalachian State University	KC
WARREN, THOMAS A. B.S., M.S., Florida State University; C.P.A., State of Florida	Business State of Florida	KC
WATKINS, LLOYD G. B.S., Jacksonville University; M.Ed., University of Florida; Ed.D., Nova University	Director, Community Services University of Florida; Nova University	NC
WATSON, ROBERT L. B.S., Georgia Institute of Technology; M.B.A., Stanford University	Vice President for Administrative and Business Services Stanford University	DA
WATTRON, THEODORE N. A.B., Anderson College, Indiana; M.A., Ohio State University	Social Science Ohio State University	NC

WEAVER, BILLY R.	Division Chairman, Social Science, Communications and Individualized Studies	SC
B.A., M.T., Northeastern State College, Tahlequah, Oklahoma		
WEBB, MARYALICE	Director, Program Development	KC
B.S., Jacksonville University; M.S.L.S., A.M.L.S., Florida State University		
WELMAN, GEORGE A.	Engineering	NC
B.A.E.E., Louisiana State University and Agricultural and Mechanical College		
WEST, FELICIA E.	Division Chairman, Natural Science, Mathematics and Physical Education	SC
B.S., Stetson University; M.Ed., Ed.D., University of Florida		
WETHERELL, RONALD G.	Art	SC
A.B., M.A., Western Kentucky University		
WHITE, SYLVIA F.	Humanities	KC
B.M., B.M.E., Jacksonville University; M.S., M.M., Florida State University		
WHITEHEAD, KENNETH	Communications	NC
B.S., M.A., East Tennessee State University		
WIESENFELD, LAURA A.	Director, Medical Laboratory Technology	NC
B.S., University of Kentucky; M.Ed., University of Florida; Ed.D., Nova University		
WILLIAMS, BILLY F., JR.	Radio & Television Repair	NC
B.S., University of Florida		
WILLIAMSON, WALTER E.	Social Science	SC
B.A., Millsaps College; M.Div., Emory University; M.A., University of South Florida; Th.D., Luther Rice Seminary		
WILSON, JACK L.	Social Science	KC
A.B., University of Chattanooga; M.S., Florida State University		
WILSON, LEROY B.	Communications	SC
A.B., University of Pennsylvania; M.A., The George Washington University		
WILSON, RICHARD L., II	Counselor	DC
B.S., Florida Memorial College; M.Ed., Florida A & M University		
WISE, STEPHEN R.	Director, Resource Development	DA
B.S., Florida Southern College; M.Ed., Middle Tennessee State University; Ed.D., University of Alabama at Tuscaloosa		
WISNER, JERRY J.	Psychology	NC
B.S., M.A., Tennessee Technological University; M.A., University of Tennessee		
WOLFORD, LARRY D.	Counselor	SC
B.A., M.A., Appalachian State University		
WOLFSON, ALBERT I.	Business	NC
B.S., Jacksonville University; C.P.A., State of Florida		
WOLSON, WILLIAM J.	Social Science	KC
A.A., Palm Beach Junior College; B.A., M.A., Florida State University		
WOOLARD, LUCIEN W.	Welding	DC
Vocational Certificate, State of Florida		
WORDEN, DWIGHT G.	Psychology	SC
A.B., M.A., Ph.D., The George Washington University		

WRIGHT, JUDITH B.	Nursing	NC
Diploma, Piedmont Hospital School of Nursing, Atlanta, Georgia		
WRIGHT, PETER B., JR.	Dean, Adult-Continuing Education	NC
B.S., Newberry College; M.A., George Peabody College for Teachers; Ed.D., Nova University		
WRIGHT, SARAH R.	Developmental Education	KC
A.B., Florida A & M University; M.A.T., Jacksonville University		
WYGAL, BENJAMIN R.	President	DA
B.A., Texas Tech University; M.A., Ph.D., University of Texas at Austin		
WYLLY, SUSAN	Art	SC
A.A., Marjorie Webster Junior College; B.S., University of Georgia; M.S.T., Georgia Southern College		
YOUREE, JOHN T.	Biological Science	NC
B.S.E., Henderson (Ark.) State College; M.S., University of Arkansas		

CAMPUS DESIGNATION

DC — DOWNTOWN CAMPUS	NC — NORTH CAMPUS
KC — FRED H. KENT CAMPUS	SC — SOUTH CAMPUS
DA — DISTRICT ADMINISTRATION	



FLORIDA JUNIOR COLLEGE AT JACKSONVILLE FOUNDATION, INC.

The Florida Junior College at Jacksonville Foundation, Inc., is a non-profit organization established to receive and manage cash contributions, deferred gifts, and equipment and supplies for charitable, scientific, and educational purposes. The Foundation spends its money on scholarships, loans, program support, professional development, work-study programs, workshops and seminars, and public relations. The Foundation's funds are derived from employees, private foundations, corporations and businesses, conferences and workshops, special projects, and memorial programs. Administration of the Foundation is overseen by a Board of Governors composed of prominent citizens who give generously of their time, talents and resources to the furtherance of the causes for which the Foundation was established. They are:

Mr. John B. Kent, Attorney
Kent, Sears, Durden & Kent
Foundation President

Mr. Guy Marvin, Vice President
New Deal Cab Company
Foundation Vice President

Mr. Fred C. Jackson, CLU
General Agent, Gulf Life Insurance Co.
Foundation Secretary-Treasurer

Dr. W. G. Allen, Jr., Professor
Florida Junior College at Jacksonville

Ms. Karen Armel, Professor
Florida Junior College at Jacksonville

Mr. Delavan Baldwin
Regional Vice President
Florida Federal Savings & Loan Assoc.

Mr. D. E. Brewer, Jr.
Jacksonville City Councilman

Mr. Carter B. Bryan
Insurance Consultant
Independent Life & Accident
Insurance Company

Mrs. Dorothy Clark, Owner
Clark Pest Control, Inc.

Mr. Ed Crenshaw, Jr.
Grocery Buyer
Publix Super Markets

Mr. McCarthy Crenshaw, Jr., Attorney
Glickstein, Crenshaw, Glickstein, Fay
& Block

RADM Lawrence Geis, USN (Ret.)
Assistant to the President for
Business & Industry Relations
Florida Junior College at Jacksonville

Mr. Harold Gibson, Manager
Training & Manpower Resources
Offshore Power Systems

Arnett Girardeau, D.D.S.
State Representative
District 16

Mr. David Hartshorn
Director, Financial Aid
Florida Junior College at Jacksonville

Mr. Chester D. Howarth, Director
Distributive & Mid-Management Education
Florida Junior College At Jacksonville

Mr. Fred Kemery, Vice-President
Voyager Life Insurance Co.

Mr. Gene Lasserre, President
Lasserre Motor Company
Fernandina Beach

Mr. Jack Lynch, President
Sutherlin Chevrolet, Inc.
Jacksonville Beach

Mr. Edwin L. McInnis, Manager
Quality Assurance & Training
Jacksonville Shipyards, Inc.

Mr. Ray Makowski
Attorney

Mrs. Raymond K. Mason
Homemaker

Mr. William Moulder, Attorney
Kent, Sears, Durden & Kent

Dr. H. J. Owen, Vice President for
Campus Operations
Florida Junior College at Jacksonville

Mr. Robert Peppers
Accountant

Mr. Fred Rebman, President
Community Television, Inc.

Mr. Robert Sanford, Dean
Florida Junior College at Jacksonville

Mr. Charles Simmons Jr., Vice-President
Afro-American Life Ins. Co.

Mr. Robert Watson, Vice-President
for Administrative & Business Services
Florida Junior College at Jacksonville

Mr. Bill White, President
Barnett Bank of Murray Hill

Mr. George H. Whiteside, Gen. Mgr.
Container Corporation of America

Mr. George Whitner, President
Florida First National Bank

Mrs. I. E. Williams, Treasurer
Gateway Nursery & Kindergarten

Mrs. Winifred Wills, President
Elizabeth Edgar Hall Foundation

Dr. Benjamin R. Wygal, President
Florida Junior College at Jacksonville



OCCUPATIONAL AND ADULT-CONTINUING EDUCATION ADVISORY COMMITTEES

One of the important tasks of the College is to provide relevant occupational and adult-continuing education programs to meet the occupational needs of individuals and the trained manpower needs of business and industry. Experience has shown that this can best be accomplished with the help of locally oriented Advisory Committees. They provide the College with advice and assistance in developing occupational and adult-continuing education programs that are attuned to the times and designed to serve the needs of the area.

The Advisory Committee structure at Florida Junior College at Jacksonville consists of groups of persons from the community appointed to advise the college faculty regarding vocational and adult-continuing education programs. Advisory Committee members serve voluntarily without pay. The committees are advisory and do not possess formal authority.

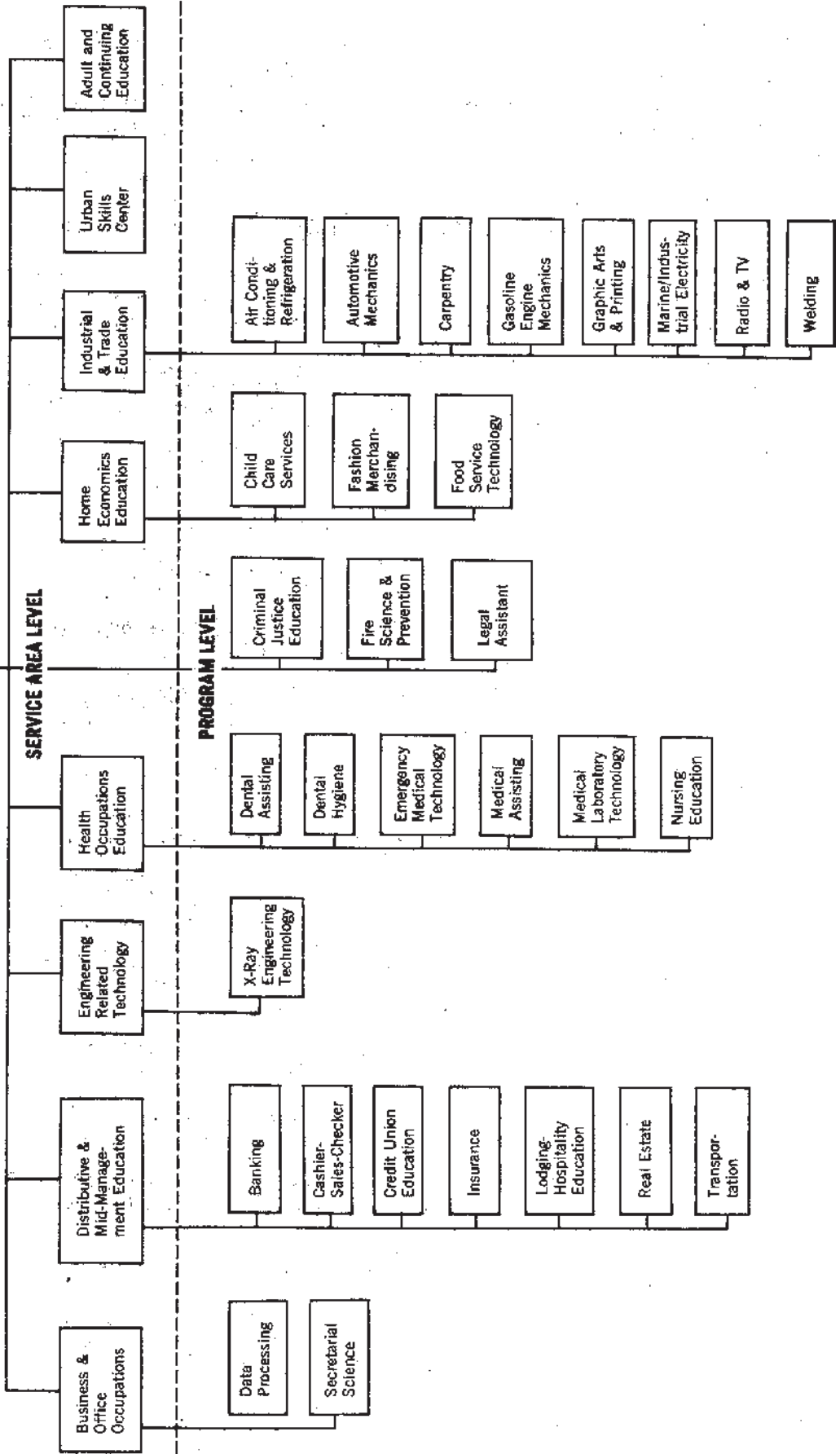
The Advisory Committee structure consists of three levels. At the top level, the Joint Occupational Advisory Board consists of a select group of citizens representing a broad range of interests in the community. The function of this Board is to advise the President, Vice-President for Campus Operations, and District Dean of Occupational and Adult-Continuing Education on the overall occupational and adult-continuing education programs. At the second level, service area Advisory Committees consist of citizens representing various interests and skills within the service area. At the third level, program Advisory Committees are organized when and as required. Chairpersons of program Advisory Committees also serve as members of the appropriate service area Advisory Committee. Following this introduction is a chart which shows the Advisory Committee structure for the College.

Florida Junior College at Jacksonville is very grateful for the valuable and indispensable assistance provided by our Advisory Committees in the development of occupational and adult-continuing education programs. Without their assistance, the rapid growth and expansion of our occupational and adult-continuing education programs would not have been possible.

ADVISORY COMMITTEE STRUCTURE

ADVISORY BOARD LEVEL

Joint Occupational
Education
Advisory Board



JOINT OCCUPATIONAL EDUCATION ADVISORY BOARD

Mr. William B. Mills

Chairperson

Culverhouse, Tomlinson, Mills,
Decarion & Anderson, Attorneys

Mr. Edward G. Ballance

Plant Manager

Maxwell House Division of General
Foods Corporation

Mr. Harold J. Belcher

Chief Forester

Southeast Timber Division
ITT Rayonier, Inc.

Mr. John W. Bowden

President

Northeast Florida Building
Trades Council

Mr. Clanzel T. Brown

Executive Director

Jacksonville Urban League

Mr. John D. Buchanan, Jr.

Senior Vice-President

Prudential Insurance Company
of America

Mr. I. H. Burney, II

Retired

Ms. Sam N. Farris

(Bonnie)

Voyage Accountant
Strachan Shipping Co.

Mr. Robert R. Feagin

Retired President

Florida Publishing Co.

Mr. Harold Gibson

Manager, Training and

Manpower Resources
Offshore Power Systems

Mr. Wilbur H. Glass

President

Auchter Co.

Mr. James Gorman

President

Florida Retail Federation

Ms. Helen P. Keefe

Executive Director

Florida State Board of Nursing

Mr. Thomas L. Mainwaring

Executive Vice-President

Ryder Truck Lines, Inc.

Mr. Theron Moss

Personnel Manager

Winn-Dixie Stores, Inc.

Ms. Carl Ogden

Homemaker

Mr. Eldridge Partin

Owner

Partin Shoe Co.

Mr. Frank Peterson

President

Diversified Products Manufacturing Co.

Mr. G. H. W. Schmidt

President

Television 12 of Jacksonville

Mr. James J. Sugrue

Vice-President for Operations

Jacksonville Shipyards, Inc.

Ms. Lyle J. Vernier

Salesperson

Stockton, Whatley, Davin & Co.

Mr. John White

Vice-President of North Florida Area

Southern Bell Telephone and Telegraph Co.

Mr. George Whitner

President

Florida First National Bank

Mr. R. P. T. Young

Vice-President and

General Manager

Glidden-Durkee Division

SCM Corporation

SERVICE AREA ADVISORY COMMITTEE
FOR
BUSINESS AND OFFICE OCCUPATIONS

Mr. Paul Halter, Sr.
Chairperson
Vice-President
Stockton, Whatley, Davin & Co.

Mr. C. Lee Daniel, Jr.
President
Controlled Environments for Industry, Inc.

Ms. Christine Bell
Office Manager
Barsco, Inc.

Mr. John L. Hardwick, Sr.
Director of Marketing
Colonial Properties, Inc.

Ms. Madeline Berry
Personnel Manager
Peninsular Life Insurance Co.

Ms. Marjorie E. Kirk
Manager, Personnel Service
Ryder Truck Lines, Inc.

Mr. William P. Tuggle, Jr.
President
Crown Products Co., Inc.

PROGRAM ADVISORY COMMITTEE
FOR
DATA PROCESSING

Mr. James M. Neustadter
Chairperson
Vice-President
Atlantic National Bank

Ms. Mary Grooves
Systems Engineer
IBM Corporation

Mr. Jack Cohoon
Computer Specialist,
Data Processing
U.S. Naval Air Station

Mr. Tom Koubek
Senior Computer Systems Analyst
Prudential Insurance Company
of America

Dr. Yap-Siong Chua
Assistant Professor,
Mathematical Sciences
University of North Florida

Mr. James H. McRae
EDP Training Specialist
Blue Cross and Blue Shield of
Florida, Inc.

Mr. Walter Cummulla
Vice-President, Computer
Resources
Computer Power, Inc.

Mr. Frank A. Reneke
Division Chief
Department of Central Services
City of Jacksonville

Mr. Maurice C. Grant
Computer Operator
May Cohens

Dr. Robert Stanley
Director, Data Processing
Duval County School Board

Mr. Albert Wilkerson
Assistant Data Center Director II
Division of Health & Rehabilitative
Services
State of Florida

**PROGRAM ADVISORY COMMITTEE
FOR
SECRETARIAL SCIENCE**

Ms. Christine Bell
Chairperson
Office Manager
Barsco, Inc.

Mr. Tom Bolden
Personnel Staff Assistant
Maxwell House
Division of General Foods Corporation

Ms. Annie Lou Crump
Legal Secretary
Reese Marshall, Attorney

Ms. Geraldine Howard
Office Manager
Manpower, Inc.

Ms. Jo Ellen Mobley
Secretary to Dean
College of Education
University of North Florida

Ms. Penny S. Murray
Administrative and
Technical Trainee-Service Fire Co.
State Farm Insurance Companies

Ms. Teri Smith
Secretary to Vice-President
and Membership Secretary
Deerwood Club

**SERVICE AREA ADVISORY COMMITTEE
FOR
DISTRIBUTIVE AND MID-MANAGEMENT EDUCATION**

Mr. Arnold Tritt
Chairperson
Executive Director
Northeast Florida Builders Association

Mr. Richard D. Barker, Jr.
Partner
Richard D. Barker, Realtor

Mr. Lee Edwards
Assistant Vice-President
First Federal Savings & Loan Association
of Jacksonville

Mr. Nelson F. Fielding, Jr.
Assistant Vice-President
Florida First National Bank
of Jacksonville

Mr. Eddie Jackson
Executive Vice-President
Lil' Champ Food Stores

Dr. Richard deRaismes Kip
Chairperson, Department of
Finance, Insurance and
Land Economics
University of North Florida

Mr. Robert A. Nelson
Executive Vice-President
Jacksonville Beach Chamber of Commerce

Mr. Martin Noon
Director of Safety
Ryder Truck Lines, Inc.

Mr. U. Bernard Richter
General Manager
Hilton Hotel

Ms. Carolyn E. Rogers
Secretary to Chairman of the Board
Seaboard Coast Line Railroad Co.

Mr. Donald J. Schneider
Vice-President
Hotel Operations
Ponte Vedra Club

Mr. John C. Staninger
First Vice-President
Stockton, Whatley, Davin & Co.

Mr. Frank Tally, CLU
President, Jacksonville Association
of Life Underwriters, Inc.
State Farm Insurance Companies

Mr. John Wallace
General Manager
Duval County Teachers Credit Union

Mr. Alton Yates
Administrative Assistant
Mayor's Office
City of Jacksonville

PROGRAM ADVISORY COMMITTEE
FOR
BANKING

Mr. Cecil F. Gibson, Jr.
Chairperson
Vice-President and Cashier
American National Bank of
Jacksonville

Mr. Robert L. Berl
Senior Vice-President
Trust Division
Jacksonville National Bank

Mr. Michael F. Capps
Assistant Cashier and
Marketing Officer
Atlantic Bank of South Jacksonville

Mr. Ulysses B. Carter
Service Supervisor
Federal Reserve Bank

Mr. Nelson F. Fielding, Jr.
Assistant Vice-President
Florida First National Bank
of Jacksonville

Mr. Robert O. Grimes
FJC Student, Banking Major
Loan Officer
Barnett Bank of Jacksonville, NA

Ms. Margot A. Groff
Assistant Trust Officer
Atlantic Bank-Downtown

Dr. Richard deRaismes Kip
Chairman, Department of
Finance, Insurance and Land Economics
University of North Florida

Mr. Patrick R. Landon
Vice-President
Five Points Guaranty Bank

Ms. Martha E. Massey
Cashier
Southeast Bank of Edgewood

Mr. Fred G. Pruitt
President
Atlantic University Bank

Ms. Anne B. Shelton
Installment Lending Assistant
Consumer Officer
Jacksonville National Bank

Mr. Wilbur H. Shorts
Senior Vice-President and Cashier
Flagship State Bank of Jacksonville

PROGRAM ADVISORY COMMITTEE
FOR
CASHIER/SALES/CHECKER

Mr. Eddie Jackson
Chairperson
Executive Vice-President
Lil' Champ Food Stores

Mr. Jesse Benton
Manager
Publix Supermarkets

Mr. Reginal Bradley
Assistant Personnel Director
A & P Food Stores

Mr. F. Osborn Bryant, Jr.
President
Frank Bryant Company, Inc.

Mr. Leroy Kelly
Supervising Counselor
Division, Vocational Rehabilitation
Unit 4, State of Florida

Mr. James M. Lawhun
Area Supervisor
Publix Supermarkets

Mr. William E. Litton
Division Employee
Relations Manager
Colonial Stores, Inc.
Thomasville, Georgia

Mr. Roy E. Manning
Administrative Assistant
Food Fair Stores, Inc.

Mr. Milo Richardson
State Project Director
Florida Restaurant Association
Rehabilitation Project

Mr. David E. White
President
Hobart Sales & Service Agency

PROGRAM ADVISORY COMMITTEE FOR CREDIT UNION EDUCATION

Mr. John W. Wallace
Chairperson
General Manager
Duval County Teachers Credit Union

Mr. John H. Base
Treasurer/Manager
Navy Mayport Federal Credit Union

Ms. Elizabeth Carter
Manager
Jacksonville U.S. Employees' Federal
Credit Union

Mr. Leslie E. Clemens
Director of Information
and Education
Florida Credit Union League

Mr. Norman Clive, Jr.
Assistant Treasurer/Manager
Jacksonville Postal Credit Union

Mr. James L. Harris
Treasurer
Jacksonville Central Credit Union

Mr. Larry Kirkman
Manager
Florida Health & Rehabilitative Services
Credit Union

Mr. Will L. Saucier
Manager
Florida Publishing Company Employees'
Federal Credit Union

Mr. Ralph Story
Director
Jax-Navy Federal Credit Union

Ms. Margaret Stringfellow
Manager
Garage & Park Employees' Credit Union

Ms. Julia Warner
Manager
Florida Telco Credit Union

Mr. H. C. Williams (Retired)
Seaboard Coast Line Railroad
Employees Credit Union

PROGRAM ADVISORY COMMITTEE FOR INSURANCE

Mr. Frank H. Tally, CLU
Chairperson
President, Jacksonville
Association of Life Underwriters, Inc.
State Farm Insurance Companies

Mr. Robert M. Gut, CPCU
Deputy Commissioner
State Treasurer and Insurance
Commissioner's Office

Mr. Thomas V. Heslin
Manager
Underwriters Adjusting Co.

Mr. Albert L. Heston, CPCU
President
Heston-Fielding & Associates, Inc.

Mr. Fred C. Jackson, Jr., CLU
President, General Agents
Managers Association
Gulf Life Insurance Co.

Mr. Charles W. Jones, CLU
Assistant Professor of
Insurance; Academic and Career Advisor
University of North Florida

Mr. Robert H. Labelle
Senior Training Specialist
Prudential Insurance Company of America

Mr. James L. Lewis
Executive Vice-President
Afro-American Life Insurance Co.

Ms. C. T. McIntire
Vice-President
Professional Insurance Corporation

Ms. LeAnne Osburne, CLU
Production Assistant Manager
The Travelers Insurance Companies

Mr. Gordon M. Rainey, Jr., CLU
General Agent
New England Mutual Life Insurance Co.

Mr. William L. Stuart
Adjunct Professor of Insurance
Florida Junior College at
Jacksonville

Mr. L. Hayes Tate, CLU
President, Jacksonville Chapter
Chartered Life Underwriters
Fidelity Mutual Life Insurance Co.

PROGRAM ADVISORY COMMITTEE
FOR
LODGING/HOSPITALITY EDUCATION

Mr. Jack Colbert
Chairperson
Manager
Royal Inn of Jacksonville

Mr. David R. Arpin
Executive Vice-President
Florida Hotel and Motel Association, Inc.

Mr. Philip A. Browning, Jr.
Owner
Best Western First National Inns
Orange Park

Ms. Yvonne Corey
Salesperson
Island Seafood Co.
Fernandina Beach

Mr. Don Effrain
General Manager
Holiday Inn, West

Mr. Michael Glover
Banquet Manager
Hilton Hotel

Mr. Arthur Hendley, Jr.
Assistant Manager
Days Inn, West

Mr. Richard Jones, Sr.
General Manager
Ramada Inn West

Mr. Spencer Ladd
Executive Vice-President
Convention and Visitors Bureau

Mr. J. Maxwell Myers
Director of Sales
Robert Mayer Hotel

Mr. U. Bernard Richter
General Manager
Hilton Hotel

Mr. Richard Robbins
General Manager
Thunderbird Motor Hotel

Mr. Donald J. Schneider
Vice-President
Hotel Operations
Ponte Vedra Club

Mr. Hugh Snow
General Manager
Robert Meyer Hotel

PROGRAM ADVISORY COMMITTEE
FOR
REAL ESTATE

Mr. Richard D. Barker, Jr.
Chairperson
Partner
Richard D. Barker, Realtor

Mr. Page F. Aspinwall
Real Estate Broker-Appraiser

Mr. James D. Baker Jr.
President
Baker & McCary, Inc.

Mr. George A. Barnes
Realtor

Dr. Ronald O. Boatright
Assistant Professor of Land Economics
University of North Florida

Mr. Walter T. Bowen
President
Bowen Real Estate

Ms. Louise Cantrell
Broker-Salesperson
Buckman, Uimer & Mitchell, Inc.

Mr. Lester W. Jenkins, Owner
Lester Jenkins Real Estate

Mr. Gary Pitts
Branch Manager
Lawyers Title Insurance Corporation

Mr. Thomas V. Schifanella
Realtor

Mr. James A. Shannon
Vice-President and Sales Manager
Fred H. Paulk, Inc.

Mr. John C. Staninger
First Vice-President
Stockton, Whatley, Davin & Co.

Ms. Wanda M. Stephan
President
Stephan-Kelly, Inc. Real Estate

PROGRAM ADVISORY COMMITTEE FOR TRANSPORTATION

Mr. Martin Noon
Chairperson
Director of Safety
Ryder Truck Lines, Inc.

Mr. Warren K. Anderson
Director of Traffic
Intermodal Services, Inc.
Trailer-Marine Transport

Mr. Fred R. Edwards, Jr.
District Freight Agent
Seaboard Coast Line Railroad Co.

Mr. Donald Graham
Instructor of Transportation
and Logistics
University of North Florida

Mr. Thomas L. Grimes
Partner
Grimes Warehouse Co.

Mr. Lowell Douglas Harmon
Executive Vice-President
Professional Driver Services, Inc.

Mr. Harry P. Hart
President
Harry P. Hart Associates—
Public Relations Counselor

Mr. Dave Hodges
Traffic Manager
Hudson Pulp and Paper Co.

Mr. Bruce F. Macrae
Traffic Manager
Food Fair Stores, Inc.

Mr. Guy Marvin
Vice-President
New Deal Cab Co.

Mr. Edwin A. Shaw
Traffic Manager
Jacksonville Port Authority

Dr. Jay A. Smith, Jr.
Professor of Transportation
and Logistics
University of North Florida

Mr. Allan Williams
Supervisor, Dispatchers
Suddath Van Lines, Inc.

SERVICE AREA ADVISORY COMMITTEE FOR ENGINEERING RELATED TECHNOLOGY

Mr. George Marsch
Chairperson
Assistant Chief Engineering
U.S. Army Corps of Engineers

Mr. Robert F. Darby, AIA
Executive Vice-President
Reynolds, Smith & Hills Architects,
Engineers & Planners, Inc.

Mr. H. R. Emery
Environmental Engineering Manager
St. Regis Paper Co.

Mr. Harold Gibson
Manager, Training & Manpower Resources
Offshore Power Systems

Ms. Deborah Pepper
Field Engineer
(Program Graduate, FJC)
Xerox Corporation

Mr. James O. Sewell
Plant Engineer
Glidden-Durkee
Division of SCM Corporation

Mr. G. Edward Shafer
Partner
Akel, Logan & Shafer

PROGRAM ADVISORY COMMITTEE FOR X-RAY ENGINEERING TECHNOLOGY

Mr. Gene B. Torrance
Chairperson
Technical Sales Representative
Radiography Markets
Eastman Kodak Co.

Mr. Jack T. Barnes
Manager
S & H X-Ray Co.

Mr. Charles Duran
Service Representative
Picker X-Ray Corporation

Mr. John Fisk
Service Engineer
(Program Graduate, FJC)
S & H X-Ray Co.

Mr. Anthony F. Giordano
Sales Representative
Picker X-Ray Corporation

Mr. Calvin Kaiser
Service Manager
S & H X-Ray Co.

Mr. Don Leary
Technical Medical Area Representative
E. I. DuPont de Nemours & Co.

Mr. Gary Patterson
Salesman in Charge
Medical Systems Division
General Electric Co.

Mr. Joel B. Russeau
(Program Graduate, FJC)
Student, Florida Technological University
Orlando

Mr. R. C. Scudder
Senior Service Systems Representative,
Medical Systems Division
General Electric Co.

Mr. Richard H. Weimer
Assistant District Manager
and Technical Director
Litton Medical Systems
Division of Litton Industries

SERVICE AREA ADVISORY COMMITTEE FOR HEALTH OCCUPATIONS EDUCATION

Dr. Max Michael, Jr.
Chairperson
Assistant Dean
Jacksonville Hospitals
Educational Programs, Inc.
Jacksonville Division
J. Hillis Miller Health Center
University of Florida College of Medicine

Mr. Robert A. Cunningham
Executive Director
St. Luke's Hospital

Ms. Evelyn Earnest
Registered Medical Technologist
Baptist Memorial Hospital

Ms. Idele M. Hovey
Director of Nursing
St. Luke's Hospital

Mr. Fred F. Huerkamp
Executive Director
Health Systems Agency of Northeast
Florida Area 3, Inc.

Ms. Hetty L. Mills
Coordinator
Outreach/Medical/Family Health Services, Inc.

Dr. Curtis M. Phillips
General Surgeon

PROGRAM ADVISORY COMMITTEE FOR DENTAL ASSISTING

Dr. Joel W. Baker
Chairperson
DDS, Endodontics

Dr. Rupert Q. Bliss
DDS, General Practice

Dr. Henry G. Brietmoser
DDS, General Practice

Dr. Everett C. Crouch
DDS, General Practice
Chairman, Committee on Education
Northeast District Dental
Society of Florida (ex-officio member)

Dr. J. C. Downing
DDS, General Practice

Dr. H. C. Goode
DDS, Orthodontics

Dr. Robert M. Knight
DDS, General Practice

Dr. Donnie A. Myers
DDS, Pedodontics

Ms. Diane Suggs, CDA
President
Jacksonville Dental
Assistants' Society

Ms. Jean Tolleson
Dental Assistant-Secretary

Dr. Earl Williams
DDS, Oral Surgeon

PROGRAM ADVISORY COMMITTEE FOR DENTAL HYGIENE

Dr. Bernard Koosed
Chairperson
DDS, General Practice

Ms. Sharyl Carrillo, RDH
Hygienist
c/o Dr. Gordon D. Perkins

Dr. Everett C. Crouch
DDS, General Practice
Chairman, Committee on Education
Northeast District Dental
Society of Florida (ex-officio member)

Dr. A. E. Girardeau
DDS, General Practice

Dr. Joseph F. Jumber
DDS, General Practice

Ms. Swann Knowles, RDH
Hygienist, c/o R. P. Taylor, DDS
Five Points Medical Center

Dr. C. P. McGeachy, Jr.
DDS, General Practice

Dr. Thomas McRae
DDS, General Practice

Dr. Richard L. Miller
DDS, Periodontics

Ms. Nancy Moody, RDH
President
Jacksonville Dental Hygienists'
Association

Dr. Harold Pattishall, Jr.
DDS, Periodontics

Dr. Gordon D. Perkins
DDS, General Practice

PROGRAM ADVISORY COMMITTEE
FOR
EMERGENCY MEDICAL TECHNOLOGY

Dr. Roy Baker
Chairperson
Cardiologist

Dr. William T. Haeck
Emergency Room Physician

Dr. Carman Judkins
Resident Physician
University Hospital of Jacksonville

Dr. John Kruse
Anesthesiologist

Dr. Edwin S. Pont
Internal Medicine
University Hospital of Jacksonville

Dr. Farid Ullah
Cardiologist
Humphrey's Memorial Hospital
Fernandina Beach, Florida

PROGRAM ADVISORY COMMITTEE
FOR
MEDICAL ASSISTING

Ms. Betty Thompson
Chairperson
Medical Assistant, c/o Ann J. Kelly, M.D.
President, Greater Duval Medical
Assistants Association

Dr. Samuel J. Alford, Jr.
Family Practice Physician

Ms. Edith Bowden
Education Services Representative
Blue Cross & Blue Shield of Florida, Inc.

Ms. Elizabeth Isbill
Medical Assistant
c/o James W. Hendrick, M.D.

Dr. Ann J. Kelly
Obstetrics-Gynecology

Ms. Dorothy McDonald
Medical Assistant
c/o Samuel J. Alford, Jr., M.D.

Ms. Betty Trask, R.N.
Supervisor
Outpatient Clinic
University Hospital of Jacksonville

Ms. Annette Williams
Medical Assistant
c/o Charles F. McKay, M.D.

**PROGRAM ADVISORY COMMITTEE
FOR
MEDICAL LABORATORY TECHNOLOGY**

Ms. Evelyn Earnest
Chairperson
Registered Medical Technologist
Baptist Memorial Hospital

Mr. Benjamin Campbell
Director of Admissions
University of North Florida

Dr. Donald Frazier
Pathologist
Program Medical Director
St. Luke's Hospital

Dr. George M. Katibah
Pathologist
Memorial Hospital

Lt. Commander Judith H. Littlefield, M.S.C.,
United States Navy Educational Coordinator
of Laboratory Services
United States Naval Regional Medical Center

Mr. Jack Mahoney, MT (ASCP)
Chief Medical Technologist
Riverside Hospital

Dr. Sanford A. Mullen
Executive Vice-President and
Medical Director
Jacksonville Blood Bank

Dr. Matthew Patterson
Pathologist
St. Vincent's Medical Center

Ms. Nancy Poore, MT (ASCP)
Chief Technologist
Memorial Hospital

Dr. Nathan Schneider
Chief, Bureau of Laboratories
Division of Health
State of Florida

**PROGRAM ADVISORY COMMITTEE
FOR
NURSING EDUCATION**

Ms. Idele M. Hovey
Chairperson
Director of Nursing
St. Luke's Hospital

Ms. Guerina Apol
Director of Nursing
University Hospital of Jacksonville

Dr. Clyde M. Collins
Surgeon
— Alternate —
Dr. Samuel J. Alford, Jr.
Family Practice Physician

Ms. Thelma Hall
Team Leader
Visiting Nurse Association

Ms. Kathleen Maher
Director of Nursing Services
St. Vincent's Medical Center

Mr. H. J. McFarland, Jr.
Assistant Executive Director
University Hospital of Jacksonville

Ms. Mary Nikodem
Director of Nursing
Memorial Hospital

Sister Catherine Norton
Administrator
St. Vincent's Medical Center

Ms. Rita Storz
Director of Nursing Services
Methodist Hospital

PROGRAM ADVISORY COMMITTEE FOR CRIMINAL JUSTICE EDUCATION

Mr. Dale Carson
Chairperson
Sheriff, Duval County

Mr. John Acker
President
Fraternal Order of Police

Mr. Paul Brown
Chief
Police Department
City of Jacksonville Beach

Mr. Ben Collins
Executive Director
Greater Jacksonville Safety Council

Ms. Lynne Dunn
Counselor
Division of Vocational Rehabilitation, Unit 5
State of Florida

Mr. John Nelson
Undersheriff, Duval County

Mr. Otha R. Smith, Jr.
District Supervisor
Florida Parole and Probation Commission

Mr. Carl Stucki
Chief
Police Department
City of Atlantic Beach

Mr. Hugh Wilson
Director
Community Relations Commission

PROGRAM ADVISORY COMMITTEE FOR FIRE SCIENCE AND PREVENTION

Mr. Woodrow W. Fish
Chairperson
Fire Marshal
Fire Department
City of Jacksonville

Mr. Walter B. Butler
Chief
Fire Department
City of Jacksonville

Mr. Ronald G. Gore
Captain
Fire Department
City of Jacksonville

Mr. M. M. Hendrix
Deputy Assistant Chief of Operations
Fire Department
City of Jacksonville

Mr. W. J. Hiers
Captain
Fire Department
City of Jacksonville

Mr. S. J. King, Jr.
Assistant Fire Chief
Fire Department
City of Jacksonville

Mr. Robert A. McCord
Owner
McCord Insurance Agency

Mr. F. E. Parrish
Deputy Assistant Chief of Training
Fire Department
City of Jacksonville

Mr. Jerome Telfair
Lieutenant
Fire Department
City of Jacksonville

Mr. John C. Wright
Captain
Fire Department
City of Jacksonville

Mr. Russell Yarborough
Chief
Fire Department
City of Jacksonville

SERVICE AREA ADVISORY COMMITTEE FOR HOME ECONOMICS EDUCATION

Ms. Catherine S. Moreland
Chairperson
Homemaker

Ms. Lilian Abelardo, RD
Nutrition Consultant
Health Department
City of Jacksonville

Ms. Lee Board
Extension Home Economics Agent and
Chairperson, District D, Florida
Home Economics Association

Mr. Gran P. Jenkins
Personnel Director
Sears, Roebuck & Co.

Ms. Nancy McAllister
Staff Writer
Jacksonville Journal
Florida Publishing Co.

Ms. Jolita Mitchell
Community Organizer
Jacksonville Urban League

Mr. William J. Patti
Owner
Patti's Italian & American Restaurant

Ms. Frances Paysinger
Supervisor, Home Economics Education
Duval County School Board

PROGRAM ADVISORY COMMITTEE FOR CHILD CARE SERVICES

Ms. June Gibson
Chairperson
Homemaker

Ms. Betty Carley
District Direct Service Supervisor
District #4, Social and Economic Services
State of Florida

Ms. Annie Everett
Director
College Park Kindergarten

Mr. T. W. Everett
Teacher (Retired)

Dr. Betty Flinchum
Professor of Education
College of Education
University of North Florida

Mr. M.S.J. Greek
Director, Professional Development
Duval County School Board

Dr. Kathleen Johnson
Associate Professor of Education
Jacksonville University
Division of Education

Ms. Joyce Miles
Student Coordinator
Child Care Services
Home Economics Division
Duval County School Board

Mr. Bruce Rhodes
Supervisor
Day Care Licensing Unit, District #4

Ms. Marion Scarborough
Director
Happy Acres Ranch

Ms. Blanche Turner
Recent Graduate,
Florida Junior College
at Jacksonville

PROGRAM ADVISORY COMMITTEE
FOR
FASHION MERCHANDISING

Mr. Gran P. Jenkins
Chairperson
Personnel Director
Sears, Roebuck & Co.

Ms. Betty Adams
Personnel Training Director
Ivey's of Jacksonville

Mr. Jack Clancey
Personnel Manager
J. C. Penney Co.

Mr. Harvey Kaplan
Vice-President of Merchandising
Vogue Shops

Mr. Ted Kuehne
Professor, Fashion Merchandising
School of Home Economics
Florida State University

Mr. Joe Lewis
Director, Training and Development
May Cohens

Ms. Dianna Papili
Personnel Manager
Montgomery Ward & Co.

Ms. Elizabeth Taylor
Personnel Director (Retired)
Furchgott's of Florida

PROGRAM ADVISORY COMMITTEE
FOR
FOOD SERVICE TECHNOLOGY

Mr. William J. Patti
Chairperson
Owner
Patti's Italian & American Restaurant

Ms. Lilian Abelardo, RD
Nutrition Consultant
Health Department
City of Jacksonville

Ms. Mamie Davis, RD
Institutional Nutrition Consultant
Division of Health
State of Florida

Mr. Lynn G. Fry
General Manager
University Club

Mr. Hans Kaunath
Director, Food and Beverage
Ponte Vedra Club

Ms. Toni Martin, RD
President
Jacksonville Dietetic Association

Ms. Jean Norris, RD
Consulting Dietician
Nursing Homes and Hospitals

Mr. Campbell Powell
Food Service Director
Regency House

Mr. Raymond Presby
Certified Executive Chef (CEC)
San Jose Country Club

Mr. Milton Sloane
Director of Operations
Strickland's Town House
Restaurant & Lounge

Ms. Joyce Windham, RD
Director, Dietary Services
University Hospital of Jacksonville

SERVICE AREA ADVISORY COMMITTEE FOR INDUSTRIAL AND TRADE EDUCATION

Mr. E. L. McInnis
Chairperson
Manager, Quality Assurance
and Training
Jacksonville Shipyards, Inc.

Mr. Joe Campbell
Consultant

Mr. Wayne Fisher
Plant Manager
Lewis Business Forms, Inc.

Mr. Kenneth Friedman
President-Owner
Poster Art Displays, Inc.

Mr. Milton Hudson
(Retired)

Mr. Clay Mort
Executive Manager
Associated General Contractors
of America

Mr. Ray E. Smith
Supervisor of Training
General Electric Co.

PROGRAM ADVISORY COMMITTEE FOR AIR CONDITIONING AND REFRIGERATION

Mr. Lamar Blount
Chairperson
Service Manager
Florida Air Conditioners, Inc.

Mr. Walter Berry
President
Fountain Products & Equipment Co., Inc.

Mr. Robert G. Hardiman
Specialist; Training-Central Air Conditioning
General Electric Co.

Mr. Douglas L. Howard
Manager
Trane Company

Mr. A. H. (Art) Nissen
General Service Manager
Cain & Bultman, Inc.

Mr. Jack Strickland
Owner
Strickland Heating & Air Conditioning Co.

Mr. Pete Wood
President
Wood's Air Conditioning Sales & Service

PROGRAM ADVISORY COMMITTEE
FOR
AUTOMOTIVE MECHANICS

Mr. Everette H. Bamford
Chairperson
General Service Manager
North Florida Lincoln-Mercury

Mr. John Bissell
Engine Tune Specialist
Key Buick

Mr. Manuel Carvalho
Regional Service Manager
Nissan Motor Corporation in USA

Mr. Bill Futrell
General Service Manager
Regency Dodge, Inc.

Mr. Frank P. Holaman
District Service Engineer
Ford Motor Co.

Mr. Stan Owens
Service Training Manager
Leyland Motor Sales

Mr. Charles Simmons
Supervising Appraiser
The Travelers Insurance Companies

Mr. Carl E. Stone
Fleet Service and Heavy Truck Engineer
Ford Motor Co.

Mr. Jack D. Wheeler
District Service Engineer
Ford Motor Co.

PROGRAM ADVISORY COMMITTEE
FOR
CARPENTRY

Mr. Gerald Dedge
Chairperson
Contractor-Owner
Deg, Inc.

Mr. Deane A. Fifield
Carpenter

Mr. Ernest McDuffie
Subcontractor-Owner

Mr. Roy E. Norton
Contractor-Owner
Norton Roofing Co.

Mr. Arthur O. Silvers
Contractor-Owner
MET Builders

**PROGRAM ADVISORY COMMITTEE
FOR
GASOLINE ENGINE MECHANICS**

Mr. L. G. Haven
Chairperson
Area Service Manager
Chrysler Marine Products Operations

Mr. Ron Chamberlin
Service Manager
Honda West

Mr. Tom Cosper
District Manager
Homelite

Mr. Curtis Johnson
Service Manager
Inlet Marine Sales and Service, Inc.

Mr. Joe Johnson
Service Manager
Honda & BMW of North Florida

Mr. W. A. "Pete" Loftin
President-Owner
Loftin's Outboard, Inc.

Mr. John T. Lowe
Executive Vice-President
Jacksonville Marine Association

Mr. Leon Zimmerman
President
RADCO Distributors, Inc.

**PROGRAM ADVISORY COMMITTEE
FOR
GRAPHIC ARTS AND PRINTING**

Mr. Wayne Fisher
Chairperson
Plant Manager
Lewis Business Forms, Inc.

Mr. Emerson Bryan, Jr.
Instructor, Industrial Arts
Duval County School Board

Mr. Charles Harvey
Foreman, Copy Preparation Department
Convention Press, Inc.

Mr. Chris S. Nail
Owner
(Former Student, FJC)
Kingdom Printing

Mr. Peter Saalfield
Plant Manager
Turknett Turnbull Printers

Mr. George W. Wheeler
Sales Representative
Virginia Paper Co.

PROGRAM ADVISORY COMMITTEE
FOR
MARINE/INDUSTRIAL ELECTRICITY

Mr. Ronald C. Kuether
Chairperson
Associate Managing Director
Jacksonville Electric Authority

Mr. Darold F. Cole
Industrial Electricity
Department Director
Reynolds, Smith & Hills Architects,
Engineers & Planners, Inc.

Mr. Robert Cox
Electrical Superintendent
Maxwell House
Division of General Foods Corporation

Mr. William McCall
Electrical Foreman
Bellinger Shipyards, Inc.

Mr. Richard G. Gonzales
Assistant Plant Engineer
St. Regis Paper Co.

Mr. Donald L. Goodling
Sales Engineer
Westinghouse Electric Corporation,
Power Systems

Mr. Kenneth A. Lawson
Shop Superintendent
Turner Electric Works

PROGRAM ADVISORY COMMITTEE
FOR
RADIO AND TV

Mr. Guy Sweetland
Chairperson
Zenith Factory Representative
Cain & Bultman, Inc.

Mr. Don Fleming
Chief Engineer
WIVY FM Radio Stations

Mr. Nathaniel Hendley
Owner-Operator
Midway Radio & TV Sales & Service

Mr. Karl Hunter
Certified Electronics Technician
Monarch Radio & TV Service

Mr. Roger I. Marvin
Owner
Roger I. Marvin Radio & TV Sales & Service

Mr. Calvin Scott
Owner
Monarch Radio & TV Service

Mr. Charles F. Williams
Co-Owner/Vice-President
in Charge of Service
Williams Radio & TV Service

PROGRAM ADVISORY COMMITTEE FOR WELDING

Mr. E. L. McInnis
Chairperson
Manager, Quality Assurance
and Training
Jacksonville Shipyards, Inc.

Mr. Jack Bradley
Welding Engineer
Offshore Power Systems

Mr. Lucius E. Morgan
Vice-President, Manufacturing and Production
Fleco Corporation

Mr. George Peacock, Jr.
Manager, Product Manufacturing Department
Florida Machine & Foundry Co.

Mr. Jack Schmidt
Yard Superintendent
Atlantic Marine, Inc.
Fort George Island

Mr. George Strate
Sales Manager
Strate Welding Supply Co., Inc.

SERVICE AREA ADVISORY COMMITTEE FOR URBAN SKILLS CENTER

Mr. O. N. Morgan
Chairperson
Training Assistant
Jacksonville Shipyards, Inc.

Mr. J. Reid Baggett
Director of Personnel
Baptist Memorial Hospital

Mr. Claude Bagwell
Deputy Chief
Building and Zoning Inspections Department
City of Jacksonville

Mr. Marvin Boutwell
Division Chief
Building and Zoning Inspections Department
City of Jacksonville

Mr. William Carlson
Director, Safety and Training
Jno. H. Swisher & Son, Inc.

Mr. Harlo Everett
Registered Land Surveyor
Ellis, Curtis and Kooker

Mr. Sam Granger
President
Granger Lumber Co.

Mr. H. E. Grimm, Jr.
Owner
H. E. Grimm Auto Repairing

Mr. J. C. Prime
Manager, Facility Planning
Southern Bell Telephone and Telegraph Co.

Mr. George K. Quinney
Corporate Recruiter
Blue Cross & Blue Shield of Florida, Inc.

Mr. Robert Reynolds
Branch Equipment Control Manager
Xerox Corporation

SERVICE AREA ADVISORY COMMITTEE FOR ADULT AND CONTINUING EDUCATION

Ms. Margaret Bowden
Chairperson
Program Writer
GJEO

Ms. Lucille Burton
Part-time Instructor
Florida Junior College
at Jacksonville

Reverend Charles B. Dailey
Pastor
First Baptist Church of Oakland

Mr. Jerry Jackson
Supervisor, Community Education
Community Education Consortium

Ms. Stephanie Kuhling
Counselor
Duval County School Board

Ms. Lynda Monayhan
GJEO-Senior Service Program Coordinator
J. S. Johnson Center

Mr. Ronald Pennel
Community School Coordinator
Fort Caroline Junior High School

Ms. Ellen Spangler
Coordinator
Jacksonville Rape Crisis Center



ALPHABETICAL INDEX TO COURSE DESCRIPTIONS BY CURRENT COURSE NUMBERS

CURRENT NUMBER	NEW NUMBER	COURSE TITLE	PAGE NUMBER
AAC 160	(ACC 1009)	General Accounting I	83
ACC 161	(ACC 1029)	General Accounting II	83
AAC 260	(ACC 2001)	Principles of Accounting I	83
AAC 261	(ACC 2021)	Principles of Accounting II	83
AAC 262	(ACC 2109)	Intermediate Accounting I	83
AAC 263	(ACC 2129)	Intermediate Accounting II	83
AAC 280	(ACC 2409)	Cost Accounting	83
AAC 281	(ACC 2509)	Federal Tax Course (Tax Accounting)	83
ADS 261	(ADV 2000)	Advertising	83
AIC 283	(ETM 2610)	Air Conditioning & Heating	96
AIO 162	(ASC 1001)	Introduction to Aviation/Aerospace	87
AIO 165	(ATF 1000)	Ground School I	87
AIO 166	(ATF 1100)	Ground School II	87
AIO 167	(ATF 1200)	Ground School III—Commercial Pilot	87
AIO 168	(ATF 1300)	Ground School IV—Instrument Pilot	87
ANA 205	(ZOO 2713)	Comparative Anatomy	114
ANA 215	(APB 2200)	Human Anatomy & Physiology	84
ANA 216	(APB 2190)	Human Anatomy & Physiology	84
ANT 210	(ANT 2956)	Introduction to Anthropology	84
ANT 220	(ANT 2410)	Cultural Anthropology	83
ANT 230	(ANT 2511)	Physical Anthropology	83
APA 161	(CTE 1810)	Fashion Merchandising I	91
APA 162	(CTE 1811)	Fashion Merchandising II	91
APA 260	(MKA 2364)	Fashion Merchandising Practicum/Seminar I	103
APA 261	(MKA 2365)	Fashion Merchandising Practicum/Seminar II	103
APA 262	(MKA 2366)	Fashion Merchandising Practicum/Seminar III	103
APC 291	(SES 2331)	Business Communications	112
APD 101	(ART 1100)	Crafts as an Element of Design	84
APD 102	()	Crafts as an Element of Design	84
APD 120	(ART 1201)	Design I	84
APD 121	(ART 1202)	Design II	84
APD 122	()	Design I	84
APD 230	(ART 2110)	Ceramics Hand-Building I	84
APD 231	(ART 2111)	Ceramics Hand-Building II	85
APD 232	(ART 2112)	Ceramics Wheel Throwing I	85
APD 233	(ART 2113)	Ceramics Wheel Throwing II	85
APD 234	(ART 2115)	Glaze Exploration	85
APD 240	()	Ceramics: Hand-Building I	85
APD 241	()	Ceramics: Hand-Building II	85
APD 280	(ART 2400)	Print Making I	85
APD 281	(ART 2401)	Print Making II	85

CURRENT NUMBER	NEW NUMBER	COURSE TITLE	PAGE NUMBER
APM 061	(MTB 0013)	Introduction to Technical Mathematics	104
APM 141	(QMB 1001)	Business Mathematics	110
APM 160	(MTB 1321)	Technical Mathematics I	104
APM 161	(MTB 1322)	Technical Mathematics II	104
APM 164	(MTB 1303)	Engineering Calculations	104
APM 280	(MTB 2323)	Technical Mathematics III	104
ART 101	(ART 1300)	Drawing I	84
ART 102	(ART 1301)	Drawing II	84
ART 105	()	Drawing I	84
ART 106	()	Drawing II	84
ART 110	(ARH 1000)	Art Appreciation	84
ART 211	(ARH 2050)	Art History I	84
ART 212	(ARH 2051)	Art History II	84
ART 231	(ART 2510)	Painting I	85
ART 232	(ART 2520)	Painting II	85
ART 233	()	Painting I	85
ART 234	()	Painting II	85
AST 110	(AST 1002)	Introduction to Astronomy	87
BCN 181	(BCN 1001)	Building Construction	88
BCN 282	(BCN 2614)	Planning & Estimating	88
BDP 170	(COC 1300)	Introductory Computer Concepts	90
BDP 171	(CNM 1005)	Data Processing Mathematics	90
BDP 172	(COP 1400)	Basic Assembly Language Programming	90
BDP 173	(CAP 1001)	Data Processing Application	88
BDP 174	(CRM 1039)	Data Processing Workshop	91
BDP 176	(COP 1160)	RPG Programming	90
BDP 270	(COP 2170)	Basic Programming	91
BDP 272	(CIS 2100)	Data Management Utility Programs	90
BDP 278	(COP 2110)	FORTTRAN Programming	90
BDP 291	(CIS 2321)	Systems Development and Design	90
BDP 293	(COP 2401)	Advanced Assembly Language Programming	91
BDP 295	(COP 2130)	PL/I Programming	91
BDP 296	(COP 2610)	Advanced Computing & Programming Systems	91
BDP 297	(COP 2120)	Basic COBOL Programming	91
BDP 298	(COP 2121)	Advanced COBOL Programming	91
BIO 101	(APB 1150)	Life in its Biological Environment	84
BIO 102	(BSC 1012)	Principles of Biology	88
BIO 241	(MCB 2010)	Microbiology	103
BIO 250	(OCB 2602)	Marine Biology	107
BIO 260	(ZOO 2450)	Ichthyology & Commercial Fishing	114
BLC 210	(AMH 2571)	Afro-American History and Culture I	83
BLC 220	(AMH 2572)	Afro-American History and Culture II	83
BOT 101	(BOT 1010)	Botany	88
BOT 201	(BOT 2140)	Field Botany of Vascular Plants	88
BUW 260	(BUL 2111)	Business Law	88
BUW 261	(BUL 2112)	Business Law	88
CED 150	(COA 1100)	Consumer Decisions	90
CGC 161	(CHD 1220)	Child Growth & Development	89
CGC 162	(CHD 1230)	Advanced Growth & Development	89
CGC 163	(EEC 1001)	Introduction to Early Childhood Education	94
CGC 164	(EEC 1201)	Overview of Early Childhood Curriculum I	94
CGC 169	(EEC 1204)	Overview of Early Childhood Curriculum II	94
CGC 290	(EDG 2940)	Observing and Recording Child Behavior	94
CGC 292	(EDG 2941)	Supervised Student Participation	94
CHE 100	(CHM 1020)	Chemistry for Liberal Arts	89
CHE 101	(CHM 1034)	Introductory Chemistry	89
CHE 102	(CHM 1035)	Introductory Chemistry	89
CHE 110	(CHM 1041)	General Chemistry and Qualitative Analysis	89

CURRENT NUMBER	NEW NUMBER	COURSE TITLE	PAGE NUMBER
CHE 111	(CHM 1042)	General Chemistry and Qualitative Analysis	89
CHE 220	(CHM 2210)	Organic Chemistry	89
CHE 221	(CHM 2211)	Organic Chemistry II	89
CIN 101	(FIL 1505)	Film as Art	97
CIT 180	(ETC 1321)	Surveying	95
CLT 171	(CTE 1401)	Basic Textiles	91
CLT 172	(CTE 1310)	Basic Clothing Construction	91
CLT 173	(CTE 1340)	Advanced Clothing Construction	91
CLT 174	(CTE 1402)	Advanced Textiles	91
CLT 175	(CTE 1350)	Tailoring I	91
COM 202	(RTV 2001)	Introduction to Broadcasting	112
COM 207	(CRW 2020)	Imaginative Writing	91
COR 160	(CCJ 1440)	Administration of Correctional Institution	88
COR 161	(CCJ 1300)	Introduction to Corrections	88
COR 260	(CCJ 2340)	Introduction to Behavior Modification	89
COR 265	(CCJ 2933)	Introduction to Special Problems in Corrections	89
COR 280	(CCJ 2310)	Correctional Custody, Jails, and Detention	89
COR 281	(CCJ 2330)	Probation, Pardons, and Parole	89
COR 285	(CCJ 2360)	Introduction to Contemporary Practices in Corrections	89
COS 205	(MMC 2100)	Writing for Mass Communications	104
DEA 170	(DEA 1020)	Preclinical Orientation	92
DEA 171	(DEA 1000)	Introduction to Practice	91
DEA 174	(DES 1102)	Dental Materials & Law	93
DEA 176	(DEA 1100)	Science for Dental Assistants	92
DEA 195	(DES 1200)	Dental Radiology	93
DEA 290	(DEA 2800)	Clinical Practice I	92
DEA 291	(DEA 2801)	Clinical Practice II	92
DEA 295	(DEA 2210)	Office Management	92
DEA 296	(DEA 2802)	Clinical Practice III	92
DEA 297	(DEA 2803)	Clinical Practice IV	92
DEH 160	(DEH 1000)	Principles of Dental Hygiene	92
DEH 164	(DEH 1701)	Dental Health Education	93
DEH 165	(DES 1000)	Dental Anatomy	93
DEH 166	(DES 1201)	Dental Radiology	93
DEH 167	(DES 1100)	Dental Materials	93
DEH 168	(DEH 1001)	Dental Hygiene I	92
DEH 169	(DEH 1002)	Dental Hygiene II	92
DEH 281	(DEH 2800)	Clinical Dental Hygiene I	93
DEH 282	(DEH 2802)	Clinical Dental Hygiene II	93
DEH 283	(DEH 2600)	Periodontics	93
DEH 284	(DEH 2930)	Dental Hygiene Seminar I	93
DEH 285	(DEH 2702)	Community Dental Health	93
DEH 286	(DEH 2931)	Dental Hygiene Seminar II	93
DEH 287	(DEH 2101)	Oral Histology & Embryology	93
DEH 288	(DEH 2303)	Pharmacology	93
DEH 289	(DEH 2401)	Oral Pathology	93
DRA 101	(THE 1000)	Introduction to Theatre	113
DRA 221	(THE 2090)	Drama Practicum	113
DTG 160	(ETD 1645)	Mechanical and Electrical Drafting	95
DTG 170	(ETD 1100)	Engineering Drawing	95
DTG 171	(EGN 1130)	Descriptive Geometry	94
DTG 280	(ARC 2120)	Architectural Drafting	84
DTG 281	(ETD 2121)	Civil Drafting	95
DTG 282	(ETI 2440)	Industrial Design	96
ECO 210	(ECO 2013)	Principles of Economics	94
ECO 211	(ECO 2023)	Principles of Economics	94
ECO 220	(ECO 2000)	Foundations of the American Economy	94
ECY 201	(PCB 2030)	The Ecological Crisis	108

CURRENT NUMBER	NEW NUMBER	COURSE TITLE	PAGE NUMBER
ECY 202	()	Environmental Perspective	108
EDU 101	(EDF 1005)	Introduction to Education	94
ELS 270	(COC 2307)	Computer Concepts	90
ELS 280	(ETE 2633)	Computer Logic Circuits	95
EME 160	(EMT 1116)	Basic Emergency Medical	94
EME 170	(EMT 1185)	Fundamentals of Emergency Medical Care	94
EME 260	(EMT 2208)	Fundamentals of Emergency Medical Technology Care II	94
EME 270	(EMT 2287)	Advanced Emergency Medical Technology	94
EME 280	(EMT 2806)	Practicum in Emergency Medical Technology	94
ENG 100	(ENC 1005)	Introduction to Communications	94
ENG 101	(ENC 1103)	English Composition I	94
ENG 102	(ENC 1136)	English Composition II	94
ENG 161	(REA 1103)	Developmental Reading	110
FAR 111	(FAD 1230)	Dynamics of Modern Living	96
FCR 163	(BAN 1210)	Analyzing Financial Statements	87
FCR 168	(BAN 1700)	Financing Business Enterprise	87
FCR 181	(BAN 1110)	Principles of Bank Operation	87
FCR 182	(BAN 1100)	The Banking Starter Series	87
FCR 184	(BAN 1160)	Bank Letters and Reports	87
FCR 240	(FIN 2100)	Personal Finance	97
FCR 260	(FIN 2000)	Principles of Finance	97
FCR 262	(BAN 2230)	Bank Investments	87
FCR 263	(BAN 2150)	Bank Public Relations and Marketing	87
FCR 264	(BAN 2200)	Credit Administration	87
FCR 265	(REE 2220)	Home Mortgage Lending	110
FCR 266	(BAN 2240)	Installment Credit	87
FCR 267	(BAN 2500)	International Banking	88
FCR 268	(BAN 2303)	Saving and Time Deposits	88
FCR 269	(BAN 2400)	Trust Functions & Services	88
FCR 281	(FIN 2230)	Money & Banking	97
FCR 283	(BAN 2720)	Bank Management	88
FIF 160	(FFP 1000)	Introduction to Fire Science	96
FIF 161	(FFP 1117)	Fire Company Organization Procedures	96
FIF 162	(FFP 1100)	Fire Operations	96
FIF 163	(FFP 1200)	Fundamentals of Fire Prevention	97
FIF 260	(FFP 2210)	Fire Investigation	97
FIF 261	(FFP 2310)	Fire Codes & Building Construction	97
FIF 263	(FFP 2524)	Explosive & Toxic Hazardous Materials	97
FIF 264	(FFP 2600)	Fire Fighting Equipment and Apparatus	97
FIF 265	(FFP 2660)	Rescue Practices	97
FIF 266	(FFP 2522)	Flammable Hazardous Materials	97
FIF 267	(FFP 2400)	Fire Fighting Tactics & Strategy	97
FMC 171	(SES 1341)	Office Applications	112
FMC 173	(SES 1328)	Calculating Machines	112
FMD 281	(ETI 2681)	Industrial Supervision	96
FRE 101	(FRE 1100)	Beginning French I	97
FRE 102	(FRE 1101)	Beginning French II	97
FRE 210	(FRE 2200)	Intermediate French I	97
FRE 211	(FRE 2201)	Intermediate French II	97
FSM 141	(FSS 1300)	Food Service Supervision I	97
FSM 142	(FSS 1305)	Food Service Supervision II	97
FSM 144	(HUN 1410)	Child Nutrition	100
FSM 150	(FSS 1001)	Orientation to Food Service Technology	97
FSM 151	(FSS 1201)	Basic Food Preparation	97
FSM 152	(HUN 1001)	Principles of Nutrition	100
FSM 153	(DIE 1201)	Therapeutic Nutrition	93
FSM 201	(FSS 2221)	Quantity Food Production	97
FSM 202	(FSS 2225)	Quantity Food Practicum	98

CURRENT NUMBER	NEW NUMBER	COURSE TITLE	PAGE NUMBER
FSM 274	(FSS 2905A)	Independent Study	98
FSM 275	(FSS 2905B)	Independent Study	98
FSM 276	(FSS 2905C)	Independent Study	98
FSM 277	(FSS 2905D)	Independent Study	98
FSM 278	(FSS 2905E)	Independent Study	98
FSM 279	(FSS 2905F)	Independent Study	98
FSM 285	(HUN 2511)	Advanced Nutrition	100
FSM 296	(FSS 2940)	Food Service Technology Internship	98
GEO 110	(GEA 1000)	World Geography	98
GEO 220	(GEO 2370)	Conservation of Resources	98
GER 101	(GER 1100)	Beginning German I	98
GER 102	(GER 1101)	Beginning German II	98
GER 210	(GER 2200)	Intermediate German I	98
GER 211	(GER 2201)	Intermediate German II	98
GEY 101	(GLY 1010)	Physical Geology	98
GEY 121	(GLY 1100)	Historical Geology	98
GME 161	(MAR 1101)	Salesmanship	102
GME 173	(MKA 1303)	Retail Practicum	103
GME 174	(MKA 1313)	Retail Practicum	103
GME 175	(MAR 1301)	Sales Promotion	102
GME 176	(MAR 1151)	Retail Merchandising	102
GME 262	(MAR 2221)	Wholesaling	103
GME 274	(MKA 2323)	Retail Practicum	103
GME 281	(MAR 2012)	Marketing Practices	102
GME 283	(MKA 2333)	Retail Practicum	103
GRA 121	(ARV 1200)	Theory of Printing Processes	86
GRA 122	(ARV 1208)	Theory of Lithographic Process	86
GRA 123	(ARV 1203)	Layout & Design	86
GRA 124	(ARV 1260)	Graphic Arts Estimating	86
GRA 131	(ARV 1201)	Printing Process-Laboratory	86
GRA 132	(ARV 1209)	Lithographic Processes Laboratory	86
GRA 231	(ARV 2230)	Hand & Machine Composition and Form Makeup	86
GRA 232	(ARV 2256)	Letterpress Press Operation and Lockup	86
GRA 233	(ARV 2225)	Cold Type Typesetting & Pasteup	86
GRA 234	(ARV 2234)	Camera Operation and Film Processing	86
GRA 235	(ARV 2250)	Negative Stripping and Offset Platemaking	86
GRA 236	(ARV 2253)	Offset Press Operation	86
GRA 237	(ARV 2945)	Practicum	86
GRA 251	(ARV 2231)	Advanced Compositional Makeup	86
GRA 252	(ARV 2257)	Advanced Letterpress Operation & Lockup	86
GRA 253	(ARV 2226)	Advanced Cold Type Typesetting & Pasteup	86
GRA 254	(ARV 2235)	Advanced Camera Operation & Film Processing	86
GRA 255	(ARV 2251)	Advanced Stripping & Offset Platemaking	86
GRA 256	(ARV 2254)	Advanced Offset Press Operation	86
HEF 150	(IND 1010)	Housing & Interior Design	100
HEN 107	(HES 1000)	Personal & Community Health	98
HEN 110	(HES 1400)	Standard First Aid	98
HEN 215	(HES 2402)	Standard First Aid Personal Safety	98
HIS 101	(EUH 1000)	Western Civilization	96
HIS 102	(EUH 1001)	Western Civilization	96
HIS 193	(HIS 1907)	Honors Survey of History	99
HIS 204	(AMH 2010)	United States History I	83
HIS 205	(AMH 2020)	United States History II	83
HIS 211	(ASH 2300)	History of the Far East	87
HIS 212	(LAH 2000)	History of Americas	100
HIS 254	(AMH 2420)	History of Florida	83
HOL 161	(HFT 1000)	Introduction to Hospitality Management	98
HOL 162	(HFT 1260)	Restaurant Operations	98
HOL 164	(HFT 1250)	Hotel/Motel Operations	98

CURRENT NUMBER	NEW NUMBER	COURSE TITLE	PAGE NUMBER
HOL 165	(HFT 1410)	Front Office Management	99
HOL 166	(HFT 1270)	Apartment/Hotel/Motel Management	98
HOL 264	(FSS 2501)	Food & Beverage Control	98
HOL 267	(HFT 2221)	Customer-Personnel Relations	99
HOL 271	(HFT 2941)	Internship	99
HOL 272	(HFT 2942)	Internship	99
HUM 203	(HUM 2211)	Western Humanities I	100
HUM 204	(HUM 2231)	Western Humanities II	100
HUM 205	(HUM 2250)	Western Humanities III	100
HUM 213	(HUM 2477)	Mediterranean Humanities	100
HUM 214	(HUM 2478)	Northern Europe Humanities	100
HUM 215	(HUM 2450)	American Humanities	100
HUM 216	(HUM 2410)	Asian Humanities	100
HUM 217	(HUM 2460)	Latin American Humanities	100
HUM 282	(HUM 2710)	Fine Arts Field Trip	100
IAE 101	(ETG 1201)	X-Ray Technology I	95
IAE 202	(ETG 2202)	X-Ray Technology II	96
IAE 203	(ETG 2203)	X-Ray Technology III	96
IAE 204	(ETG 2204)	X-Ray Technology IV	96
IAE 205	(ETG 2205)	X-Ray Technology V	96
IDS 140	(IDS 1935)	Interdisciplinary Studies Seminar	100
IDS 145	(STD 1200)	Study Skill Development	113
IDS 150	(SOP 1502)	Dynamics of Behavior	112
IDS 151	(STD 1150)	Career Planning	113
IEL 160	(ETE 1001)	Fundamentals of General Electricity	95
IEL 163	(ETE 1524)	Electrical Controls	95
IEL 164	(ETE 1010)	D/C Theory & Circuits	95
IEL 165	(ETE 1020)	A/C Theory & Circuits	95
IEL 283	(ETE 2121)	Advanced Electronic Circuit Analysis	95
IEL 285	(ETE 2101)	Electronics I	95
IEL 286	(ETE 2111)	Electronics II	95
IEL 287	(ETE 2112)	Electronics III	95
IEL 288	(ETE 2141)	Semiconductor Circuit Design	95
INR 230	(INR 2002)	International Relations	100
INS 161	(RMI 1030)	Principles of Insurance	111
INS 162	(RMI 1210)	Principles of Fire & Allied Lines	111
INS 163	(RMI 1200)	Principles of Casualty Insurance & Surety Bonding	111
INS 164	(RMI 1110)	Principles of Life Insurance I	111
INS 165	(RMI 1280)	Principles of Property Insurance Adjusting I	111
INS 166	(RMI 1160)	Marketing Principles of Life and Health Insurance	111
INS 167	(RMI 1120)	Principles of Health Insurance	111
INS 168	(RMI 1260)	Principles of Insurance and Liability Claim	111
INS 181	(RMI 1432)	Life Company Operations	111
INS 183	(RMI 1430)	Legal Aspects of Life Insurance	111
INS 281	(RMI 2750)	Life Insurance Accounting	112
INS 282	(RMI 2281)	Property Insurance Adjusting	111
INS 283	(RMI 2270)	Liability Insurance Adjusting	111
INT 120	(RET 1024)	Fundamentals of Inhalation Therapy	110
INT 121	(RET 1274)	Introduction to Respiratory Care	110
INT 125	(APB 1261)	Cardiopulmonary Anatomy and Physiology	84
INT 126	(RET 1414)	Arterial Blood Gases and Pulmonary Function Studies	110
INT 127	(RET 1264)	Respiratory Therapy Advanced Equipment	110
INT 209	(RET 2885)	Selected Studies in Respiratory Technology	111
INT 220	(APB 2503)	Pulmonary Pathology	84
INT 221	(RET 2714)	Pediatric Respiratory Therapy	111

CURRENT NUMBER	NEW NUMBER	COURSE TITLE	PAGE NUMBER
INT 225	(RET 2616)	Respiratory Therapy Department Management	111
INT 226	(APB 2650)	Pharmacology for the Respiratory Therapist	84
INT 291	()	Respiratory Therapy Clinical Practices	111
INT 292	(RET 2844)	Intensive Care Practicum for Respiratory Therapy	111
ISA 170	(ETI 1700)	Industrial Safety	96
JOU 101	(JOU 1001)	Introduction to Journalism	100
LAE 160	(CCJ 1020)	Introduction to Criminal Justice	88
LAE 161	(CCJ 1400)	Police Organization & Administration	88
LAE 162	(CCJ 1420)	Police Operations	88
LAE 163	(CCJ 1030)	Introduction to Criminal Behavior	88
LAE 260	(CCJ 2250)	Constitutional Law-Criminal Law I	89
LAE 262	(CJT 2110)	Introduction to Criminalistics	90
LAE 264	(CJD 2310)	Police Supervision	90
LAE 265	(CCJ 2930)	Seminar in Police Problems	89
LAE 266	(CCJ 2230)	Evidence	89
LAE 267	(CCJ 2500)	Juvenile Delinquency	89
LAE 280	(CCJ 2220)	State & Local - Criminal Law II	89
LAS 281	(CJT 2100)	Criminal Investigation	90
LAS 122	()	Laws of Domestic Relations	100
LAS 123	()	Introduction to Legal Technology	100
LAS 124	()	Legal Writing and Research I	100
LAS 125	()	Litigation	100
LAS 126	()	Legal Writing and Research II	101
LAS 127	()	Wills, Trusts, and Probate	101
LAS 128	()	Corporate Law	101
LAS 129	()	Criminal Law	101
LAS 130	()	Law Office Management	101
LAS 131	()	State and Federal Tax Law	101
LAS 132	()	Real Property Law	101
LAS 133	()	Torts	101
LIS 201	(LIS 2001)	Use of Books & Libraries	101
LIT 200	(LIT 2021)	An Introduction to Literature	101
LIT 210	(ENL 2013)	English Literature I	95
LIT 211	(ENL 2023)	English Literature II	95
LIT 220	(AML 2024)	American Literature I	83
LIT 221	(AML 2025)	American Literature II	83
LIT 238	(ENG 2160)	Children's Literature	95
LIT 240	(LIT 2211)	Great Ideas in World Literature	101
LIT 241	(LIT 2221)	Great Ideas in World Literature	101
LIT 242	(LIT 2332)	Afro-American Literature	101
LIT 243	(LIT 2310)	The Bible as Literature	101
MAG 162	(MAR 1011)	Principles of Marketing	102
MAM 282	(MAR 2401)	Sales Management	103
MAM 284	(MAR 2131)	Principles of Purchasing I	102
MAM 285	(MAR 2132)	Principles of Purchasing II	103
MAT 101	(MGF 1113)	College Mathematics	103
MAT 111	(MAC 1142)	Introductory Analysis - Honors	102
MAT 119	(MAT 1024)	Beginning Algebra	103
MAT 120	(MAT 1033)	Intermediate Algebra	103
MAT 121	(MAC 1104)	College Algebra	101
MAT 122	(MAC 1114)	College Trigonometry	101
MAT 124	(MAC 1132)	College Algebra & Trigonometry	102
MAT 131	(MAC 1311)	Calculus with Analytic Geometry I	102
MAT 151	(STA 1014)	Elementary Statistics	113
MAT 161	(CNM 1100)	Computer - Oriented Mathematics	90
MAT 204	(MAE 2810)	Modern Mathematics for Teachers	102

CURRENT NUMBER	NEW NUMBER	COURSE TITLE	PAGE NUMBER
MAT 232	(MAC 2312)	Calculus with Analytic Geometry II	102
MAT 233	(MAC 2313)	Calculus with Analytic Geometry III	102
MAT 242	(MAP 2302)	Differential Equations	102
MET 101	(MET 1001)	Meteorology	103
MEY 160	(ETI 1421)	Engineering Materials & Processes	96
MIS 101	(MIS 1000)	The Army as a Profession	103
MIS 102	(MIS 1630)	The Organization of the Army	103
MIS 201	(MIS 2630)	Application of Military Skills	103
MIS 202	(MIS 2300)	Small Unit Tactical Employment	103
MLT 173	(MLS 1010)	Hematology	103
MLT 174	(MLS 1400)	Clinical Microbiology	104
MLT 179	(MLS 1021)	Introduction to Health Technology	104
MLT 200	(MLS 2530)	Serology and Blood Banking	104
MLT 293	(MLS 2610)	Basic Clinical Chemistry	104
MLT 294	(MLS 2600)	Principles of Clinical Instrumentation	104
MLT 295	(MLS 2802)	Applied Clinical Diagnosis I	104
MLT 296	(MLS 2803)	Procedures in Clinical Diagnosis	104
MLT 297	(MLS 2804)	Applied Clinical Diagnosis II	104
MTY 280	(ETM 2221)	Elements of Applied Energy	96
MTY 281	(ETG 2504)	Engineering Mechanics	96
MTY 285	(ETM 2310)	Fluid Mechanics	96
MUS 116	(MUC 1301)	Introduction to Electronic Music	104
MUS 120	(MUE 1440)	Class Strings	104
MUS 121	(MUE 1450)	Class Woodwinds	104
MUS 122	(MUE 1460)	Class Brass	105
MUS 123	(MUE 1470)	Class Percussion	105
MUS 118	(MUG 1201)	Basic Choral Conducting	105
MUY 211	(MUH 2211)	Survey of Music History	105
MUY 101	(MUL 1011)	Music Appreciation	105
MUS 162	(MUN 1130)	Symphonic Band	105
MUS 167	(MUN 1280)	Community Orchestra	105
MUS 171	()	College Chorale	105
MUS 164	()	College Chorus	105
MUS 165	(MUN 1380)	Community Chorus - Jacksonville Concert Chorale	105
MUS 172	(MUN 1410)	String Ensemble	105
MUS 163	(MUN 1710)	Jazz-Rock Ensemble	105
MUS 166	(MUO 1001)	Music Workshop	105
MUS 105	(MUS 1000)	Student Recital	106
MUS 016	(MUT 0001)	Introduction to Music Theory	106
MUS 112	(MUT 1121)	Music Theory I	106
MUS 113	(MUT 1122)	Music Theory II	106
MUS 212	(MUT 2126)	Music Theory III	106
MUS 213	(MUT 2127)	Music Theory IV	106
MUS 216	(MUT 2231)	Keyboard Harmony	106
MUS 217	(MUT 2232)	Keyboard Harmony	106
MUS 119	(MVK 1621)	Basic Piano Pedagogy I	106
MUS 219	(MVK 2621)	Basic Piano Pedagogy II	106
NUR 175	(NUU 1140)	Nursing Process I	107
NUR 176	(NUU 1141)	Nursing Process II	107
NUR 29A	(NUR 2121)	Coronary Care Nursing	106
NUR 29B	(NUR 2006)	Emergency Department Nursing	106
NUR 293	(NUU 2222)	Nursing Process III	107
NUR 294	(NUU 2223)	Nursing Process IV	107
NUR 299	(NUR 2240)	Critical Care Seminar	106
OCE 201	(OCE 2005)	Introductory Oceanography	107
OCE 261	(OMT 2211)	The Theory and Technology of Marine Field Sampling	107
OCE 262	(OMT 2223)	Marine Instrumentation	107
OCO 100	(COE 1000)	Cooperative Education Seminar	90
OCO 101	()	Cooperative Education Work Experience I	90

CURRENT NUMBER	NEW NUMBER	COURSE TITLE	PAGE NUMBER
OCO 201	()	Cooperative Education Work Experience II	90
PED 101	(PEL 1141)	Archery	108
PED 102	(PEL 1346)	Beginning Badminton	108
PED 104	(PEL 1624)	Advanced Basketball	108
PED 106	(PEL 1111)	Beginning Bowling	108
PED 112	(PEL 1121)	Beginning Golf	108
PED 113	(PEM 1226)	Rebound Tumbling	108
PED 114	(PEL 1420)	Handball & Paddle - Racquet Ball	108
PED 117	(PEL 1341)	Beginning Tennis	108
PED 118	(PEL 1342)	Intermediate Tennis	108
PED 119	(PEM 1301)	Track Events	108
PED 120	(PEL 1140)	Archery - Volleyball	108
PED 122	(PEM 1421)	Beginning Wrestling	108
PED 124	(PEM 1109)	Circuit Training	108
PED 131	(PEN 1121)	Beginning Swimming	108
PED 132	(PEN 1122)	Intermediate Swimming	109
PED 135	(PEN 1113)	Life Saving	108
PED 139	(PEN 1206)	Navigation & Small Boat Handling	109
PED 141	(PEN 1135)	Underwater Diving Skills (Scuba)	109
PED 142	(PEM 1441)	Karate & Self - Defense	108
PED 145	(PEM 1101)	Physical Conditioning for Women	108
PED 157	(DAA 1320)	Folk Dance	91
PED 158	(DAA 1000)	Recreational Dance	91
PED 159	(PEL 1510)	Softball - Soccer	108
PED 160	(PEL 1041)	Recreational Games	108
PED 161	(PEN 1511)	Angling	109
PED 162	(LEI 1000)	Introduction to Recreational Activity	101
PED 220	(PEL 2322)	Advanced Volleyball	108
PED 242	(PEM 2442)	Intermediate Karate & Self-Defense	108
PEL 140	()	Supervision of Elementary Children at Play	109
PEL 200	(PET 2000)	Introduction to Physical Education	109
PEL 220	(PEO 2003)	Sports Officiating	109
PHI 201	(PHI 2010)	Introduction to Philosophy	109
PHI 210	(PHI 2100)	Introduction to Logic	109
PHI 240	(PHI 2600)	Introduction to Moral & Political Philosophy	109
PHS 101	(PSC 1341)	Physical Science	110
PHS 102	(GLY 1000)	Earth & Space Science	98
PHS 287	(SCE 2416)	Science Institute for Elementary Teachers	112
PHY 100	(PHY 1020)	Physics for Liberal Arts	109
PHY 201	(PHY 2050)	General Physics I	109
PHY 202	(PHY 2051)	General Physics II	109
PHY 210	(PHY 2040)	Physics I with Calculus	109
PHY 211	(PHY 2041)	Physics II with Calculus	109
POS 204	(POS 2041)	American Federal Government	109
POS 205	(POS 2112)	State and Local Government	109
POS 220	(CPO 2002)	Introduction to Comparative Government	91
PSY 111	(PSY 1012)	General Psychology	110
PSY 214	(EDP 2002)	Education Psychology	94
PSY 241	(DEP 2002)	Human Growth & Development	93
PSY 242	(DEP 2102)	Child Psychology	93
PSY 243	(DEP 2302)	Adolescent Psychology	93
REL 201	(REL 2300)	World Religions	110
REL 210	(REL 2210)	Religious Thought in the Old Testament	110
REL 211	(REL 2243)	Religious Thought in the New Testament	110
REM 210	(LEI 2330)	Camp Counseling	101

CURRENT NUMBER	NEW NUMBER	COURSE TITLE	PAGE NUMBER
RES 161	(REE 1000)	Real Estate Principles & Practices	110
RES 162	(REE 1400)	Real Estate License Law	110
RES 163	(REE 1100)	Real Estate Appraisal	110
RES 164	(REE 1810)	Real Estate Sales	110
RES 281	(REE 2430)	Real Estate Law	110
RES 283	(REE 2270)	Mortgage Broker in Mortgage Lending	110
SAM 160	(MAN 1700)	Introduction to Business	102
SAM 250	(MAN 2000)	Principles of Management	102
SAM 251	(MAN 2300)	Personnel Management	102
SLD 101	(EEX 1000)	Introduction to Exceptional Child Education	94
SOC 201	(SOC 2000)	Introductory Sociology	112
SOC 210	(SOC 2020)	Social Problems	112
SOC 220	(MAF 2200)	Marriage & Family	102
SOP 110	(SOP 1002)	Human Relations	112
SPA 101	(SPN 1100)	Beginning Spanish I	113
SPA 102	(SPN 1101)	Beginning Spanish II	113
SPA 210	(SPN 2200)	Intermediate Spanish I	113
SPA 211	(SPN 2201)	Intermediate Spanish II	113
SPE 110	(SPC 1010)	Fundamentals of Speech	112
SPE 233	(SPC 2594)	Intercollegiate Debate	113
SPE 240	(SPC 2420)	Discussion	113
SPE 250	(ORI 2000)	Oral Interpretation	107
SSS 101	(SSI 1110)	Origins of American Society	113
SSS 102	(SSI 1120)	Origins of American Society	113
STS 171	(SES 1210)	Beginning Shorthand	112
STS 172	(SES 1211)	Intermediate Shorthand	112
STS 290	(SES 2213)	Advanced Shorthand	112
STS 291	(SES 2234)	Dictation & Transcription	112
STS 292	(SES 2401)	Secretarial Practices	112
STS 295	(SES 2250)	Legal Shorthand	112
STS 296	(SES 2255)	Medical Terminology	112
STT 282	(ETG 2535)	Testing & Strength of Materials	96
STT 284	(ETC 2410)	Fabrication Processes	95
TER 281	(ENC 2315)	Technical Report Writing	95
TRA 160	(TRA 1010)	Principles of Transportation	113
TRA 161	(TRA 1032)	Transportation & Traffic Management I	113
TRA 162	(TRA 1100)	Transportation & Traffic Management II	113
TRA 163	(TRA 1033)	Carrier Liability & Claims	113
TRA 164	(TRA 1905)	Independent Study of Transportation	114
TRA 165	(TRA 1420)	Commercial Motor Transportation	114
TRA 167	(TRA 1120)	Rate Clerk	113
TRA 168	(TRA 1230)	Material Handling	113
TRA 263	(TRA 2110)	Transportation & Traffic Management III	114
TRA 264	(TRA 2120)	Transportation & Traffic Management IV	114
TRA 265	(TRA 2311)	Interstate Commerce Law and Practice	114
TRA 266	(TRA 2020)	Economics of Transportation	114
TRA 267	(MAN 2050)	Transportation Management and Theory	102
TRA 281	(TRA 2300)	Interstate Commerce Act I	114
TRA 282	(TRA 2310)	Interstate Commerce Act II	114
TRA 283	(TRA 2312)	Interstate Commerce Act III	114
TRA 284	(TRA 2314)	Interstate Commerce Act IV	114
TYG 162	(SES 1100)	Beginning Typewriting I	112
TYG 174	(SES 1101)	Beginning Typewriting II	112
TYG 175	(SES 1110)	Intermediate Typewriting	112
TYG 285	(SES 2120)	Advanced Typewriting	112
ZOO 101	(ZOO 1010)	General Zoology	114

GENERAL INDEX

	Page(s)		Page(s)
Accelerated High School Program.....	35	Home Economics Education.....	73-75
Accident Reporting.....	10	Public Service Education.....	76-79
Accounting Program		Common Course Number System.....	82
Curriculum, AS Degree.....	51	Communications Laboratory.....	80
Accreditation.....	1	Community Services.....	127
Activities, Student.....	20-23	Computer Operations Program	
Administrative Officers.....	2	Curriculum, Certificate.....	52
Administrators, Listing.....	163-186	Computer Programming Program	
Admission Requirements		Curriculum, Certificate.....	52
College Credit.....	34-38	Concurrent Registration.....	11,32,37
Non-College Credit.....	116,124-125	Contents, Table of.....	3
Adult and Continuing Education Course		Continuing Education, for Women.....	127
Descriptions.....	153-159	Cooperative Education Program.....	79-80
Adult and Continuing Education Program(s).....	124	Correspondence or Extension Courses.....	37
Adult Basic Education.....	124	Counseling.....	13
Adult High School Completion.....	124-126	Course Descriptions, College Credit.....	82-114
Advising.....	13	Course Descriptions, Non-College Credit.....	131-161
Advisory Committees.....	189-210	Course Load, Maximum.....	9
Aging, Program for.....	126-127	Criminal Justice Education—Corrections Program	
Appeals, Student.....	15	Curriculum, AS Degree.....	76
Architectural and Building Construction		Criminal Justice Education—Law Enforcement	
Technology Program		Programs	
Curriculum AS Degree.....	61-62	Curriculum, AS Degree.....	77
Army ROTC.....	81	Curriculum, Certificate.....	77
Associate in Arts Degree Information.....	44-47	Curricula	
Associate in Science Degree Programs.....	48-79	Associate in Arts Degree.....	44-47
Athletics.....	23	Associate in Science Degree.....	48-50
Athletic Scholarships.....	17	College Credit Certificate.....	48-50
Attendance, Policy.....	9	Non-College Credit Occupational Education	
Audio-Visuals.....	23	Studies.....	128-129
Auditing of Courses.....	37	Adult and Continuing Education Programs.....	124
Avocational/Recreational Courses, List.....	160-161	Data Processing Program	
Banking Program		Curriculum, AS Degree.....	52-53
Curriculum, AS Degree.....	55	Definition of Terms.....	32-33
Board of Trustees.....	2	Dental Assisting Program	
Bookstore Services.....	15	Curriculum, Certificate.....	67
Business Program, General		Dental Hygiene Program	
Curriculum, AS Degree.....	53	Curriculum, AS Degree.....	66
Calendar.....	4-5	Developmental Education	
Campus Information.....	6-7	North Campus.....	80
Campus Locations.....	1	South Campus.....	80
Cancellation of a Course.....	38	Kent Campus.....	80
Career Development Centers.....	13	Directory, Faculty and Administration.....	163-186
Career-Personal Testing.....	13	District Board of Trustees.....	2
Center for the Continuing Education of Women.....	127	District Offices.....	6
Certificate Programs, College Credit.....	48-50	Downtown Campus.....	6
Chief Administrative Officers.....	2	Drafting and Design Technology Program	
Child Care Services Program		Curriculum, AS Degree.....	62-63
Curriculum, AS Degree.....	73	Drafting Program	
Civil Engineering Technology Program		Curriculum, Certificate.....	62-63
Curriculum, AS Degree.....	61-62	Dropping a Course.....	5,40-41,122-123
Class Attendance.....	9	Dual Purpose Courses, Definition.....	82
Clerical Program		Due Process Procedure.....	14-15
Curriculum, Certificate.....	54	Early Admission Program.....	35
College Credit Information.....	34-114	Electronic Engineering Technology Program	
College Credit Programs		Curriculum, AS Degree.....	63
Business Education.....	51-54	Emergencies, First Aid.....	11
Distributive Education.....	55-60	Emergency Medical Technology Program	
Engineering and Industrial Related Education.....	61-65	Curriculum, AS Degree.....	68
Health Education.....	66-72	Employment of Students.....	19,43

	Page(s)		Page(s)
Enrollment, College Credit Courses.....	34,38	Hospitality Management Program	
Enrollment, Non-College Credit		Curriculum, AS Degree.....	56
Courses.....	116-117,124-127	Housing.....	12
Equality, Policy on.....	8	Human Rights.....	8
Equal Opportunity Policy.....	8	Incomplete Grade Deadlines.....	5,9
Evening Adult Centers.....	7	Index, Alphabetically by Current Course Numbers	
Experience-Based Education.....	79-80	College Credit.....	211-220
Faculty Listing.....	163-186	Insurance, Professional Malpractice	
Fashion Merchandising Program		College Credit.....	39-40
Curriculum, AS Degree.....	74	Non-College Credit.....	120
Fees, Graduation.....	39	Insurance Program	
Fee Schedule		Curriculum, AS Degree.....	57
College Credit.....	39-40	International Applicant.....	36
Non-College Credit.....	117-120	Job Placement.....	13
Fee Waivers		Kent Campus, Fred H.....	7
College Credit.....	40	Learning Resources Centers.....	23
Non-College Credit.....	121-122	Legal Assistant Program	
Fees, for Tests.....	24-25,121	Curriculum, AS Degree.....	78-79
Fees, Miscellaneous		Library and Audio-Visual Services.....	23
College Credit.....	39,40	Library Services.....	23
Non-College Credit.....	117-123	Loans.....	18-19,43
Financial Aid.....	16-19,42-43	Mechanical Engineering Technology Program	
Financial Information		Curriculum, AS Degree.....	64
College Credit.....	39-43	Medical Laboratory Technology Programs	
Non-College Credit.....	117-123	Curriculum, AS Degree.....	69-70
Registration Fees and Additional Fees		Curriculum, Certificate.....	69-70
Information		Military Service School Credits.....	37
College Credit.....	39-40	Non-College Credit Information.....	115-161
Non-College Credit.....	117-123	Non-College Credit Studies.....	124-129
Fire Science and Prevention Programs		Non-College Credit Course Descriptions.....	131-161
Curriculum, AS Degree.....	78-79	North Campus.....	6
Curriculum, Certificate.....	78-79	Nursing, Technical Program	
First Aid, Emergencies.....	11	Curriculum, AS Degree.....	71-72
Food and Vending Service.....	15	Objectives, of the College.....	8
Food Service Technology Programs		Occupational and Adult/Continuing Education	
Curriculum, AS Degree.....	75	Advisory Committees.....	189-210
Curriculum, Certificate.....	75	Occupational Education Courses, Definition.....	124
Forgiveness Policy.....	10	Occupational Education, Course Descriptions	
Foundation, Inc., Florida Junior College at		Non-College Credit.....	131-152
Jacksonville.....	19	Occupational Education Programs, Non-College	
Foundation, Inc., Board of Governors.....	187-188	Credit.....	128-129
Fred H. Kent Campus.....	7	Orientation.....	13
GED Examination.....	24	Overseas Studies, Summer.....	81
General Business Program		Philosophy, of the College.....	8
Curriculum, AS Degree.....	53	Printing/Graphic Arts Program	
General Education Requirements		Curriculum, AS Degree.....	65
Associate in Arts Degree.....	45-47	Program Locations, Campus	
Associate in Science Degree.....	50	AS Degree.....	49
Grade Deadlines.....	5,9-10	College Credit Certificate.....	49
Grade Points.....	10	Occupational Education, Non-College	
Grading System.....	9-10	Credit.....	128-129
Graduation Requirements		Adult and Continuing Education.....	129
Associate in Arts Degree.....	44-45	Real Estate Program	
Associate in Science Degree.....	50	Curriculum, AS Degree.....	58
Certificate.....	50	Recreational/Avocational Courses.....	160-161
Graduation, with Honors.....	10	Refund Appeals.....	12
Grants.....	18	Refunds, of Fees.....	40-41,122-123
Graphic Arts Program		Registration, Concurrent.....	11,32,37
Curriculum, AS Degree.....	65	Registration Information.....	37-38,117
Health Services.....	23	Regulation Changes.....	12
High School Completion Program.....	124-126	Residency Affidavit.....	34-35
High School Equivalency Program.....	126	Respiratory Therapy Program	
History of the College.....	6	Curriculum, AS Degree.....	70
Holidays.....	4	ROTC, Army.....	81
Honors Graduation.....	10	Safety & Traffic Control.....	11-12

This Page Left Blank

FLORIDA JUNIOR COLLEGE AT JACKSONVILLE

Jacksonville, Florida 32202



Return Application to:
Student Development Office
Kent-North-South or Downtown Campus
or

APPLICATION FOR COLLEGE CREDIT ADMISSION

Complete Items Below As Indicated

Mail Application to:
Florida Junior College at Jacksonville
District Office of Records
Jacksonville, Florida 32202

APPLICATIONS MUST BE TYPED OR PRINTED IN INK CAMPUS PREFERENCE FOR REGISTRATION

- 1st Choice: Downtown Kent North South
2nd Choice: Downtown Kent North South

IMPORTANT: INCOMPLETE FORMS WILL BE RETURNED WITHOUT PROCESSING.

Admission Status:

ADMISSION STATUS REQUESTED: (check one)

- 1 CREDIT (seeking degree or certificate) 2 AUDIT (no credit or grade received) 3 SPECIAL (Student not a high school graduate - age 19 or older) 4 ACCELERATED HIGH SCHOOL (See college catalog) 5 EARLY ADMISSION:

STUDENTS REQUESTING ONE OF THE ABOVE ADMISSION STATUSES MUST COMPLETE PAGES 1, 2, 3, 4

6 **NON-DEGREE**

Requirements for a non-degree seeking student are as follows:

- STUDENT MUST HAVE COMPLETED HIGH SCHOOL OR THE EQUIVALENT PRIOR TO ENTERING FLORIDA JUNIOR COLLEGE AT JACKSONVILLE.
- Student may not earn more than 30 semester hours of credit at FJC under this status.
- TRANSCRIPTS FROM OTHER COLLEGES WILL NOT BE REQUIRED NOR WILL THEY BE EVALUATED WHILE STUDENT IS ON NON-DEGREE STATUS.
- An international student may not be admitted under the non-degree status.
- A student receiving benefits from any government sponsored program may not enter under non-degree status.
- At the point a student wishes to pursue a degree, he/she must contact the Office of Registration and Records and indicate that he/she wishes to be changed to degree credit status. The student would then be required to furnish the College the appropriate proof of previous education.

If you meet and agree to the requirements listed for non-degree status, sign here:

Signature of Student _____

STUDENTS REQUESTING NON-DEGREE STATUS, MUST COMPLETE PAGES 1 AND 4 ONLY.

Personal Information:

1. GIVE EXACT LEGAL NAME. GIVE FULL NAME. DO NOT USE INITIALS.

(Last) _____ (First) _____ (Middle) _____ (Maiden) _____

2A. PRESENT MAILING ADDRESS (Street and number or P.O. Box) _____ (City) _____ (County) _____ (State) _____ (Zip Code) _____

2B. PERMANENT LEGAL ADDRESS (Street and number or P.O. Box) _____ (City) _____ (County) _____ (State) _____ (Zip Code) _____

3. TOTAL FAMILY ANNUAL INCOME (check one)

1. 0000-2999 2. 3000-5999 3. 6000-7499 4. 7500-8999 5. 9000-11,999 6. over 12,000

4. BIRTHPLACE (City, State, Country) _____

5. BIRTHDATE

Mo. Day Year

6. AGE _____

7. COUNTRY OF CITIZENSHIP _____

8. SEX: CHECK APPROPRIATE BOX

1. Male 2. Female

9. RACE: CHECK APPROPRIATE BOX

1. White American 2. American Indian 3. Black American 4. Asian American 5. Other 6. Spanish Surnamed American

10. COPY YOUR SOCIAL SECURITY NUMBER IN THE BLOCKS BELOW, ONE NUMBER PER BLOCK.

--	--	--	--	--	--	--	--	--	--

12. TELEPHONE NUMBER AT PRESENT MAILING ADDRESS _____

13. OCCUPATION _____

15. MILITARY STATUS (check one)
If 3 or 4 checked, give branch and date of service:

1. IN SERVICE (active)
 2. RESERVES

3. VETERAN (less than 2 years service)
 4. VETERAN (more than 2 years service)

5. NOT APPLICABLE

BRANCH _____ FROM _____ TO _____
Mo. Year Mo. Year

16. FULL NAME AND RELATIONSHIP OF NEXT OF KIN: _____

TELEPHONE _____

17. ADDRESS OF PERSON IN ITEM 16: (Street and number or P.O. Box) _____ (City) _____ (State) _____ (Zip Code) _____

Enrollment Intentions:

18. I PLAN TO ATTEND FLORIDA JUNIOR COLLEGE AT JACKSONVILLE BEGINNING WITH THE TERM AND YEAR INDICATED

- FALL (August) WINTER (January) SPRING (May) SUMMER (June) YEAR: 19____

19. I PLAN TO ENROLL 1. FULL TIME DAY 2. PART TIME DAY 3. FULL TIME EVENING 4. PART TIME EVENING

20. IS YOUR REGISTRATION UNDER ANY GOVERNMENT SPONSORED PROGRAM?
IF YES, ENTER PUBLIC LAW AND NAME OF PROGRAM

1. YES 2. NO Name of program _____

21. WHY ARE YOU ATTENDING FJC? 1. TO EARN A DEGREE 2. FOR OCCUPATIONAL RELATED REASONS 3. FOR OTHER REASONS

PROOF OF PREVIOUS EDUCATION

NOTE: If the applicant wishes to receive credits toward a degree, it is his/her responsibility to file proof of previous education with the Office of Registration and Records, District. If this requirement is not met, grades will be withheld and the student will not be allowed to register for any future term. All international students must file proof of previous education as indicated below:

Acceptable proof of previous education:

A. High School Graduate

1. A notarized affidavit certifying high school graduation date
or
2. A final transcript of high school grades and credits with graduation date indicated
or
3. Photostat of high school equivalency diploma
or
4. Official Score Report of the United States Armed Forces Institute (USAFI) high school equivalency test containing scores which are equal to or exceed those required to obtain a State of Florida High School Equivalency Diploma. Minimum scores required are an average standard score of 45 on all tests with no standard score lower than 40.

B. Transfer Students

An official transcript of grades and credits from all colleges or universities attended which are accredited by the Southern Association of Colleges and Schools. Unofficial or student copies of transcripts are not acceptable. Foreign transcripts must be accompanied by certified English translations.

Previous Education:

22. HIGH SCHOOL (Name) (Location) Currently Attending? Yes No Indicate date work will be or was completed: Mo. Year
Did You Graduate? Yes No Indicate date you will be or were graduated: Mo. Year

23. EQUIVALENCY DIPLOMA (Issuing Agency) (City) (State) (Date Of Issue)

24. USAFI (High School) SCORES TEST 1 TEST 2 TEST 3 TEST 4 TEST 5

(MINIMUM SCORES REQUIRED ARE AN AVERAGE STANDARD SCORE OF 45 ON ALL TESTS WITH NO STANDARD SCORE LOWER THAN 40)

25. COLLEGES OR UNIVERSITIES ATTENDED IN ORDER OF ATTENDANCE

	YEAR	FROM	TO	Eligible to Return		Degree Earned (If Any)	Earned Credit Hours	
				YES	NO		Quarter Hrs.	Semester Hrs.
1.				<input type="checkbox"/>	<input type="checkbox"/>			
2.				<input type="checkbox"/>	<input type="checkbox"/>			
3.				<input type="checkbox"/>	<input type="checkbox"/>			
4.				<input type="checkbox"/>	<input type="checkbox"/>			

PROOF OF PREVIOUS EDUCATION AFFIDAVIT - HIGH SCHOOL ONLY

An applicant who is a bona fide high school graduate and WHO HAS NOT ATTENDED ACCREDITED COLLEGES OR UNIVERSITIES should execute the notarized affidavit below in lieu of submitting a high school transcript.

The interpretation of a bona fide high school graduate will also apply to students with a high school equivalency diploma and to students who have earned scores through the United States Armed Forces (USAFI) high school equivalency tests which are equal to or exceed those required to obtain a State of Florida High School Equivalency Diploma. Minimum scores required are an average of 45 on all tests with no standard score lower than 40.

AFFIDAVIT FOR HIGH SCHOOL GRADUATION

(Read statement above and, if qualified, complete and sign before a Notary Public)

I _____, am or will be a bona fide high school graduate, as indicated above. My high school work was or will be completed on _____, 19____, and I was or will be graduated on _____, 19____,

from (A) Name of high school _____

Address _____ (City) (State)

(B) Equivalency diploma from _____

(C) USAFI scores (check) _____

Sworn to and subscribed before me this _____ day of _____, 19____

(Notary Public Signature - Sign in Ink and Seal)

Signature of Applicant -- (Sign in Ink)

My Commission Expires _____

Information for Student Development Office:

1. FINANCIAL AID INFORMATION:

Should financial aid be needed, contact the Financial Aid Office on the campus you plan to attend.

2. PROGRAM PLANS: (You must circle the number of the Course of Study you plan to follow)

ASSOCIATE IN ARTS

- 101 Art
- 102 Business Admin.
- 103 Business Education
- 104 Child Care Services
- 127 Crim. Just. Education-Corrections
- 128 Crim. Just. Education-Law Enforcement
- 123 Data Processing
- 106 Fire Science & Prevention
- 107 Forestry
- 108 General College
- 109 Health P.E. and Recreation
- 124 Home Economics Education
- 110 Marine Sciences
- 111 Medical Laboratory Technology
- 112 Music or Music Educ.
- 114 Occupational Therapy
- 115 Pharmacy
- 116 Physical Therapy
- 118 Pre-Dental, Pre-Medical
- 119 Pre-Engineering
- 125 Pre-Nursing
- 120 Pre-Optometry and Pre-Vet
- 121 Pre-Law
- 122 Teacher Education

ASSOCIATE IN SCIENCE

- 201 Accounting
- 202 Architectural & Building Construction Technology
- 228 Banking
- 203 Child Care Services
- 204 Civil Engineering Tech.
- 237 Crim. Just. Education-Corrections
- 238 Crim. Just. Education-Law Enforcement
- 205 Data Processing
- 233 Dental Hygiene
- 206 Drafting & Design Tech.
- 208 Electronic Eng. Tech.
- 229 Fashion Merchandising
- 211 Fire Science & Prevention
- 212 Food Service Tech.
- 213 General Business
- 214 Hospitality Management
- 216 Insurance
- 218 Mechanical Eng. Tech.
- 220 Medical Laboratory Tech.
- 240 Printing/Graphic Arts
- 230 Real Estate
- 244 Respiratory Therapy
- 226 Secretarial Science
- 227 Technical Nursing
- 231 Transportation
- 235 X-Ray Engineering Tech.
- 245 Legal Assistant
- 250 Sales-Marketing-Retailing
- 251 Emergency Medical Tech.

CERTIFICATE PROGRAM

- 302 Clerical
- 309 Computer Operation
- 316 Computer Programming
- 314 Crim. Just. Education-Law Enforcement
- 306 Dental Assisting
- 303 Drafting
- 304 Fire Science & Prevention
- 310 Food Service Tech.
- 311 Medical Laboratory Tech.
- 307 Stenography

OTHER

- 401 Certification
- 402 Extension of Certificate
- 403 Self-enrichment

3. HIGH SCHOOL GRADE HISTORY:

Please give the last letter grades (A, B, C, D, F) in the following subjects:

List all Math courses and grades.

Year	English	Science	Social Studies
Junior			
Senior			

Course	Year Taken	Grade

4. PERSONAL MEDICAL HISTORY: (To be completed by applicant)

A. If you have had any of the illnesses listed, please check the appropriate box:

- Convulsions
 Epilepsy
 Diabetes
 Heart Disease

B. In case of emergency students will be assisted in the manner specified in the college catalog or according to current college policy.

5. Person to be notified in case of emergency:

Name _____ Address _____ City _____ Phone _____

Residency Affidavit:

READ THIS INFORMATION CAREFULLY BEFORE SIGNING STATEMENT ON NEXT PAGE

All applicants who are bona fide residents of Florida are required to execute a notarized residency affidavit and to submit it with their application for admission to Florida Junior College at Jacksonville. Tuition assessments are based on the applicant's residence or the legal residence of his parents or legal guardian if the applicant is less than 18 years of age and unmarried.

A bona fide resident, as used herein, is interpreted to mean that the applicant, or if the applicant is less than 18 years of age and unmarried his parent or legal guardian is (a) a bona fide citizen, resident and domiciliary of the state of Florida; or (b) admitted to this country as an immigrant and has been issued a resident alien number; or (c) a Cuban or other foreign refugee, regardless of refugee status; and shall have resided and had his habitation, domicile, home and permanent abode in Florida for at least 12 months immediately prior to the first day of classes for the term entering Florida Junior College at Jacksonville as a bona fide resident.

The categories listed below shall classify a student as a Florida Resident for tuition purposes only: 1. Military personnel, on active duty and stationed in Florida including dependent members of their immediate families. 2. Full-time public elementary, secondary, and university faculty members under current teaching contracts for the state of Florida, their spouses and members of their immediate families - this does not include a daughter-in-law or son-in-law of such faculty member. 3. Full-time faculty and career employees of the community college system, their spouses and members of their immediate families - this does not include a daughter-in-law or son-in-law. 4. Veterans of the United States of America Armed Forces retired with twenty (20) years or more active service including dependent members of their immediate families who are in Florida at the time of retirement or moved to Florida within one (1) year following retirement and intend to make Florida their permanent home.

An applicant qualifying as a resident for tuition purposes under these categories should execute the appropriate affidavit on page 4. Nonresident students must sign the statement on page 4.

READ THE RESIDENCY AFFIDAVIT INFORMATION ON PAGE 3 BEFORE SIGNING AFFIDAVIT BELOW
Form For Parent or Legal Guardian of Applicant Under 18 Years of Age and Unmarried

(Read statement on page 3 and, if qualified, complete and sign before a Notary Public)

I, _____, am a bona fide resident, as indicated on page 3, of the State of Florida, and I am the _____ of _____ who is under _____

(Father, Mother or Legal Guardian) (Student's Full Name)

the age of 18 years of age and unmarried and who is applying for admission to Florida Junior College at Jacksonville. I am a United States citizen or have been admitted to the United States as an immigrant.

Sworn to and subscribed before me this _____ RESIDENT ALIEN registration number _____
 _____ day of _____, 19 _____
(If applicable)

(Notary Public Signature—Sign in Ink and Seal)
 My Commission Expires _____

(Signature of Parent or Legal Guardian - Sign in Ink)

Form For Applicant 18 Years of Age or over or Married and for Applicant Under 18 Years of Age and Residing Independently of Parent or Guardian

(Read statement on page 3 and, if qualified, complete and sign before a Notary Public)

I, _____, am a bona fide resident, as indicated on page 3, of the State of Florida. I am a United States citizen or have been admitted to the United States as an immigrant.

Sworn to and subscribed before me this _____ RESIDENT ALIEN registration number _____
 _____ day of _____, 19 _____
(If applicable)

(Notary Public Signature—Sign in Ink and Seal)
 My Commission Expires _____

(Signature of Applicant - Sign in Ink)

I DO NOT QUALIFY FOR CLASSIFICATION AS A FLORIDA RESIDENT AS DEFINED ON PAGE 3 AND I AM PREPARED TO PAY OUT-OF-STATE TUITION ON REQUEST. I understand that application for residence re-classification must be completed prior to the first day of classes of any subsequent term.

(Student's Signature—Sign in Ink)

(Date)

I hereby apply for admission to Florida Junior College at Jacksonville. I have checked the application for error and certify that the information is accurate and complete. I agree to abide by all rules and regulations of the College.

Applicant's Signature

--	--	--	--	--	--	--	--	--	--

SOCIAL SECURITY NUMBER

Date Signed

Signature of Parent or Guardian if applicant is under 18

Date Signed

DO NOT WRITE BELOW THIS LINE — FOR OFFICE USE ONLY

PROCESSING OF APPLICATION

Initial as steps are completed

FOR CAMPUS REGISTRAR'S OFFICE USE:

_____ Alpha List _____ Complete
 _____ Incomplete _____ Coded

BELOW for DISTRICT OFFICE USE ONLY:

_____ Talled _____ Transcript
CARD TYPED _____ Alpha File
 _____ Married _____ Sent to Data
 _____ Name _____ Transcript
 _____ Maiden _____ Alpha File
 _____ Name _____ (Double Check)

DATE KEYPUNCHED

DATES RECEIVED

Florida Junior College at Jacksonville

21 West Church Street

Jacksonville, Florida 32202