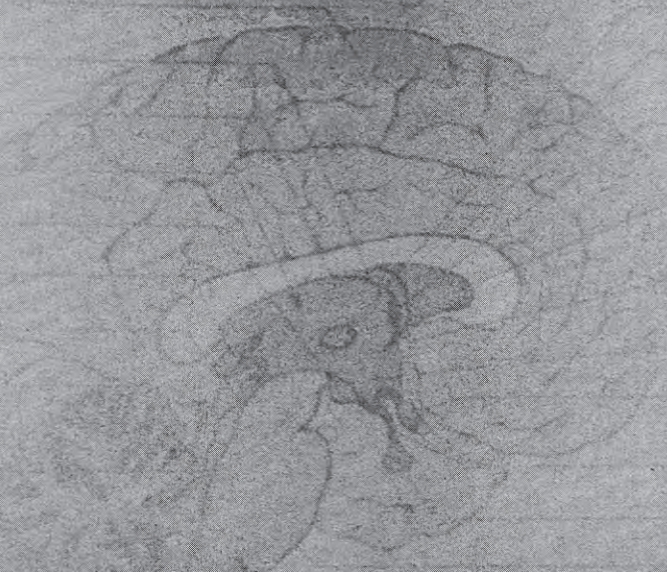


BRAIN - MEDIAL ASPECT



UNIVERSITY OF CALIFORNIA  
SCHOOL OF MEDICINE  
DEPARTMENT OF ANATOMY



# FACULTY AND ADMINISTRATION

(AS OF JANUARY 1, 1978)

## CAMPUS DESIGNATION

DC — DOWNTOWN CAMPUS  
 KC — FRED H. KENT CAMPUS  
 DA — DISTRICT ADMINISTRATION  
 NC — NORTH CAMPUS  
 SC — SOUTH CAMPUS

ABEL, MARGARET	Director, Continuing Education	DC
B.A., State University of New York at Oswego; M.Ed., Ed.S., University of Florida		
ADAMS, E. BEVERLY	Communications	KC
B.S., Georgia State College for Women; M.A., A.P.G., University of Florida		
AIRES, JULIE H.	Biology	KC
B.S., St. Norbert College (Wis.); M.Ed., University of North Florida		
ALLEN, ELEANOR C.	Art	SC
B.A., The College of William and Mary in Virginia; M.F.A., The George Washington University		
ALLEN, WALTER G., JR.	Business	KC
B.S., Auburn University; M.B.A., Ed.D., University of Florida		
ALTHOFF, F. DANIEL	Communications	DC
B.A., M.A., Florida State University		
ANDERSON, PATRICK R.	Criminal Justice	SC
B.A., Furman University; M.Div., Southwestern Baptist Theological Seminary; M.A., Sam Houston State University		
ARCURI, THOMAS	Accounting	SC
A.A., Indian River Junior College; B.S., M.Ed., University of Florida		
ARMEL, KAREN	Music	SC
B.F.A., M.Ed., University of Florida		
AXELBERG, ANNE E.	High School Credit (Mathematics)	DC
B.S., Rutgers, The State University of New Jersey		
AUSTIN, ROBERT S., JR.	Fiscal Officer	DA
B.S., Jacksonville University; C.P.A., State of Florida		
BADGER, SOLOMON L., III	Counselor	SC
B.S., M.Ed., Florida A & M University; Ed.D., Nova University		
BAILEY, CLARE C.	Division Chairman, Natural Sciences, Mathematics and Physical Education	NC
B.S., M.S., Ph.D., University of Florida		
BAILEY, WILLIAM F.	Physical Science	SC
B.S., Concord (W.Va.) State College; M.A.T., University of North Carolina at Chapel Hill		

## 196 / FACULTY AND ADMINISTRATION

BAIN, MARCIA J. B.A., M.A., Georgia State University	Mathematics	NC
BAKER, MARTINEZ	Executive Director, Field Services	DA
BALLARD, FRANCIS B. B.S., M.S., Illinois State University; Ed.S., Florida State University	Business	NC
BANICKI, ALOIS J. B.S., Western Michigan University; M.A., Eastern Michigan University	Communications	SC
BARNETT, CLARICE H. Diploma, Georgia Baptist Hospital School of Nursing, Atlanta, Georgia	Nursing	NC
BARRETT, LAWRENCE W. Vocational Certificate, State of Florida	Plumbing and Pipe Fitting	DC
BATES, JAMES W. A.B., Birmingham Southern College; M.S.L.S., University of North Carolina at Chapel Hill	Director, Learning Resources	NC
BEARDEN, JOAN L. B.A., Tulane University; M.S.L.S., Louisiana State University and Agricultural and Mechanical College	Librarian	KC
BEASLEY, GEORGIA B. B.S., M.S., Northwestern State University of Louisiana	Child Care Services	NC
BEAUDOIN, ADRIEN P. B.Ed., M.Ed., Keene (N.H.) State College; Ph.D., University of Alabama at Tuscaloosa	Communications	KC
BENNETT, DELPHIA M. B.S., M.Ed., Florida A & M University	Biological Science	DC
BERTSCH, JEFFREY C. B.S.F.S., Georgetown University; M.S., Florida State University	Social Science	SC
BEST, CONSTANCE J. B.S., North Carolina College; M.S., Indiana University	Nursing	NC
BLACKWELL, MELBOURNE D., JR. B.S., M.M., East Carolina University; Ph.D., Florida State University	Music	SC
BLADEL, DIANE N. B.Ed., University of Miami; M.A., Florida State University	Communications	KC
BLADEL, JOHN P. B.A., University of Notre Dame; M.B.A., University of Miami	Business	SC
BLAY, MICHAEL S. B.S., M.Ed., University of Florida	Accounting	SC
BOATENG, ALFRED K. B.S., M.A., Andrews University (Mich.); Ph.D., Purdue University	Biological Science	NC
BOHANING, WILSON H.	Business Affairs Officer (North Campus)	DA
BOHLER, GEORGE S. B.S., M.S., Florida State University	Social Science	NC
BONNEVILLE, BRUCE V. B.S., B.A., University of Florida	Auditor	DA

BORDEAUX, RICHARD H. B.A., M.A., Florida State University	Communications	KC
BORDEN, JUNE C. B.S.N., M.S.N., University of Alabama	Nursing	NC
BORNE, WILLIAM G. Vocational Certificate, State of Florida	Machine Shop	DC
BOSWELL, ERNESTINE D. B.S., Tuskegee Institute; M.S., Florida State University	Nursing	NC
BOUCHER, FREDERICK H. B.A., University of Tulsa; M.A., Teachers College, Columbia University; M.Ed., University of Florida	Physical Science	SC
BOUCHER, SARA P. B.A., Lake Forest College; M.A.T., Jacksonville University	Humanities	SC
BOYLES, BILLY O. B.A., University of Texas at El Paso; M.J., University of Texas at Austin	Associate Director, Information Services and Publications	DA
BRADFORD, BARBARA R. B.S., Florida State University; M.Ed., University of Florida; Ed.S., Florida State University	Business	SC
BREDA, ANTHONY Vocational Certificate, State of Florida	Diesel Mechanics	DC
BREEN, ROGER E. B.S., Boston College; M.A., Teachers College, Columbia University	Mathematics	DC
BRICKELL, GRANT R. B.E., Western Illinois University; M.S., Purdue University	Communications	SC
BRINKLEY, GLORIA J. B.S., Stetson University; M.A., Presbyterian School of Christian Education	Business	NC
BROWN, CORRINE B.A., M.S., Florida A & M University; Ed.S., University of Florida	Developmental Education	NC
BROWN, DANIEL D. B.S., University of Maryland; M.Ed., Ed.S., University of Florida	Social Science	SC
BROWN, HORACE A.A., North Florida Junior College; B.S., Florida A & M University; M.S., Southern University and A & M College	Physical Science	KC
BROWN, MARIAN T. A.B., Bennett College; M.M.E., D.M.E., Indiana University	Humanities	SC
BROWNETT, THELMA D. B.F.A., Wesleyan Conservatory, Macon, Georgia; M.F.A., University of Georgia	Art	SC
BROWNING, THOMAS G. B.S.B.A., M.Ed., University of Florida	Dean, Occupational Education	NC
BRUCE, JOHNNY W. B.S.E., M.S.E., Arkansas State University	Biological Science	KC
BRUNNER, ROBERT J. B.A., Heidelberg College; M.A., University of Oklahoma; M.S., Syracuse University	Librarian (Media)	DC

BRYANT, EZEKIEL W.	Provost	NC
A.A., Edward Waters College; B.S., Bethune-Cookman College; M.Ed., Boston University; Ed.D., Nova University		
BULLARD, WILLIE	High School Credit (Social Science)	DC
B.S., Bethune-Cookman College		
BURNETT, JUDITH J.	High School Credit (Business)	DC
B.S., M.Ed., University of Southern Mississippi		
BURROWS, JIMMIE L.	Business Education	DC
B.S., Tennessee Technological University; M.A., George Peabody College for Teachers		
BURROWS, WILLIAM D.	Data Processing	NC
B.M.E., University of Florida; M.A., University of Iowa; Ph.D., University of Alabama at Tuscaloosa		
BURT, JOE E.	Humanities	SC
B.M., Samford University; M.M., Northwestern University		
CACCIOLA, ROSEANN M.	Director, Faculty Affairs	DC
B.A., Tennessee Wesleyan College; M.A., Ph.D., Vanderbilt University		
CALDWELL, JOSEPH H.	Dean, Student Development	SC
B.S., M.S., Florida State University; Ed.S., University of Florida; Ed.D., Nova University		
CAMPBELL, BENJAMIN F.	District Dean, Instructional Services	DA
A.A., Polk Junior College; B.S., Florida State University; M.Ed., University of North Florida		
CARMICHAEL, BOBBY J.	Accounting	SC
B.B.A., Eastern New Mexico University; B.B.A., M.Ed., University of North Florida; M.B.A., University of Arkansas; C.P.A., State of Florida		
CARTER, ALPHONSO B.	Mathematics	NC
B.S., Florida A & M University; M.S., Rutgers, The State University of New Jersey		
CARTER, BETTY A.	Developmental Education	SC
B.A., Goucher College; M.Ed., University of Florida		
CARTER, DELPHENIA M.	Reading	DC
B.S., M.Ed., Florida A & M University		
CASWELL, CHARLOTTE Y.	Librarian	KC
B.A., Jacksonville University; M.Ed., University of Florida		
CHANDLER, GWENDOLYN J.	Librarian	SC
B.S., Alabama State University; M.S.L.S., Catholic University of America; M.Ed., University of North Florida		
CHANDLER, JUNE MARIE	Nursing	NC
A.A., Kendall College (Ill.); B.S., Northwestern University; B.S., M.S., University of Alabama		
CHRISTOPHER, MILDRED M.	High School Credit (English)	DC
B.S., Edward Waters College		
CHRISTOFOLI, LUTHER B.	Dean, Academics	NC
A.B., Newberry College; M.A., Auburn University; Ed.D., University of Florida		
CLELAND, JAMES M.	Director, General Studies	DC
B.S., Presbyterian College; M.S., Clemson University		
CLELAND, SHARON E.	Communications	KC
B.S., M.S., University of Tennessee at Knoxville		

COBB, ELIZABETH M. B.S., Edward Waters College; M.Ed., Florida A & M University; Ed.D., Nova University	Dean, General Studies	DC
COLE, JAMES NATHAN B.S., Florida State University; M.P.A., Bernard Baruch College, City University of New York	Director, Criminal Justice and Fire Science	SC
CONRAD, CRAIG M. B.A., M.A., University of South Florida	Physical Science	SC
COOK, LENDA H. B.S., West Texas State University; M.A.T., University of North Carolina at Chapel Hill	Biological Science	NC
COOK, MARY S. B.S., M.A.C.T., Auburn University	Child Care Services	NC
CORBITT, SARAH C. B.S., M.Ed., Florida A & M University; Ed.S., Florida State University	Biological Science	DC
CORDIER, DOUGLAS C. B.S., M.A., Eastern Kentucky University	Physical Education	NC
COSBY, JON P. B.A., M.A., Western Kentucky University; Ed.D., Nova University	Dean, Academics	SC
COTTON, H.D. B.S., Florida Southern College; M.A., Middle Tennessee State University; Ed.D., University of Alabama at Tuscaloosa	Dean, Student Development	NC
COULSON, DONNA C. B.A., King College; M.S., Florida State University	Librarian	KC
COX, ERNESTINE B. B.S., M.Ed., Florida A & M University	Adult Basic Education	DC
CROCKETT, JIMMY R. B.S., Florence (Ala.) State University; M.A., Middle Tennessee State University	Physical Science	SC
CRUSE, VERA W. Diploma, Brewster Methodist Hospital School of Nursing, Jacksonville, Florida; B.S., M.Ed., Florida A & M University	Nursing	NC
CRUTCHFIELD, FLORENCE P. A.B., University of North Carolina at Chapel Hill	High School Credit (Mathematics)	DC
CUSACK, JOSEPH B., III B.S., East Tennessee State University; M.A., Appalachian State University	District Associate Dean, Occupational and Adult-Continuing Education	DA
DANIEL, JOAN M. B.A., Morris Brown College	High School Credit (English)	DC
DANIEL, RALPH C., JR. B.A., M.A., University of South Florida; Ed.S., Florida State University	Counselor	NC
DAVIDSON, DAVID L. B.A.Ed., M.Ed., University of Mississippi	Social Science	KC
DAVIDSON, MARJORIE M. B.A., University of North Carolina at Chapel Hill	Director, Foundation	DA
DAVIS, BARBARA G. B.S.N.Ed., DePaul University; M.S., Case-Western Reserve University	Nursing	NC

200 /FACULTY AND ADMINISTRATION

DAVIS, BONNIE J. B.S.N., Duke University	Nursing	NC
DAVIS, ELIZABETH W. B.S., Florida State University	Home Economics	KC
DAVIS, JONES E. B.B.A., M.B.A., J.D., University of Georgia	Accounting/General Business	KC
DeGOURSEY, LEO R. Vocational Certificate, State of Florida	Printing and Graphic Arts	NC
DELLINGER, HARRY V. B.S., M.A., Western Carolina University; Ed.D., University of Southern Mississippi	Business	NC
DENSON, WILLIAM H., III B.A., Florida State University; M.S., University of Southern Mississippi	Communications	NC
DeSIMONE, MARILYN G. B.A., Stetson University; M.A.T., Jacksonville University	Communications	KC
DETERS, MARCELLA D. B.S., State University of New York College at Cortland; M.A., Teachers College, Columbia University	Physical Education	SC
DIFFIE, GRANVILLE P. B.S., University of Maryland; M.Ed., Ed.S., Ed.D., University of Florida	Psychology	KC
DIGGETT, HAROLD W. Vocational Certificate, State of Florida	Air Conditioning, Refrigeration and Heating	NC
DINKINS, BRUCE K. B.M., University of Tampa; M.M., New England Conservatory of Music	Music	SC
DIXON, ROBIN J. B.S., Furman University; M.S., Emory University	Respiratory Therapy	NC
DOBY, WILLIAM C. B.S., United States Naval Academy; B.S.E.E., United States Naval Postgraduate School; M.S., Rochester Institute of Technology; Ed.S., Ph.D., University of Florida	Engineering	SC
DODSON, HARRIETTE Y. A.A., North Florida Junior College; B.A., M.A., Florida State University	Communications	KC
DOLLINGER, RICHARD E. B.S., United States Naval Academy; M.S., Ed.S., Florida State University	Director, Vocational-Technical Education	DC
DORSETT, JOHNNY L. B.S., University of Florida; M.S., University of North Florida	Supervisory Training	DC
DOUGLASS, CHARLES G. B.A., Gettysburg College; M.A.T., Rollins College	Social Science	SC
DREHER, DEBORA A. B.A.,M.A., New York University	Humanities	SC
DROST, KENNETH W. B.S., M.S., Louisiana State University and Agricultural and Mechanical College	Physical Educator	SC
DRUM, JERRY B. A.B., Lenior Rhyne College; M.A., Appalachian State University; Ed.D., University of Alabama at Tuscaloosa	Social Science	DC

DUMBLETON, DUANE D. B.S., University of Wisconsin; M.S., Syracuse University; Ed. D., University of Georgia	Social Science	SC
DUNAGAN, MARIE E. B.S., M.S., Florida State University	Librarian	SC
DYER, JOHN L. B.S., Springfield College; M.S., Syracuse University	Business	SC
ELLIS, PATRICIA B.S., Boston State College; M.Ed., College of William and Mary in Virginia	Individualized Studies	SC
ENG, CHOOHUA J. A.A., Hiwassee College; B.S., Tennessee Wesleyan College; M.M., University of Tennessee at Knoxville	Data Processing	NC
ESKRIDGE, NORFLEET W. B.S., M.A., Appalachian State University	Physical Education	KC
EVERETT, INDINESE C. Vocational Certificate, State of Florida	Cosmetology	KC
FARMER, JOHN E. B.A., M.Ed., University of Florida; Ed. D., Nova University	Dean, Student Development	KC
FARRIS, JULIAN E. B.A., Jacksonville University; M.A., Florida State University	Humanities	SC
FARSHING, DONALD, JR. B.S., United States Naval Academy; B.S.A.E., United States Naval Postgraduate School; M.S., Stevens Institute of Technology	Engineering	DC
FEARS, RUBEL G. B.A., M.A., Mississippi State University	Communications	NC
FERRY, STELLA V. Vocational Certificate, State of Florida	Cosmetology	KC
FINCH, OLIVER R. B.S.E., Georgia Southern College; M.A., George Peabody College for Teachers; Ph.D., University of Alabama at Tuscaloosa	Provost	SC
FINEGOLD, MIRIAM T. A.A., B.A., Jacksonville University; M.S., Florida State University	Nursing	NC
FISHER, LINDA M. A.B., Wheaton College; M.A., Boston University	Humanities	KC
FITZGERALD, EDWARD E. B.A., M.S., Louisiana State University and Agricultural and Mechanical College	Director, Learning Resources	KC
FLEMING, HARRY E. B.S., M.S., M.Phil., University of Southern Mississippi	Social Science	SC
FLOURNOY, BEAULAH M. B.A., Bethune-Cookman College; M.A., University of Florida	Social Science	DC
FLYNN, AUDREY L. B.S., M.A., Florida State University	Child Care Services	NC
FOWLER, WARREN M. Vocational Certificate, State of Florida	Marine Electricity	DC



202 / FACULTY AND ADMINISTRATION

FRIEDMAN, MARSHALL R. B.S., University of Pennsylvania; M.Ed., Ed.S., University of Florida	Business	SC
FRITTS, MILDRED S. B.S., Auburn University; M.A.T., Jacksonville University; Ed.S., Ed.D., Mississippi State University	Communications	NC
FROBERG, JAMES W. B.S., M.S., Florida State University	Librarian (Media)	SC
GAGLIARDI, HENRY M. B.S., St. Louis University; M.S., Florida State University; D.D.S., St. Louis University	Director, Dental Programs	NC
GALLON, DENNIS P. B.S., Edward Waters College; M.S., Indiana University at Bloomington; Ed.S., Ph.D., University of Florida	Business	KC
GANT, JANE D. B.S., M.S., University of Alabama	Physical Science	NC
GARRETT, ROBERT I., Jr. B.S., Middle Tennessee State University; M.A., George Peabody College for Teachers	Social Science	SC
GAY, ELEANOR J. B.S., M.A., Florida A & M University	Equal Access/Equal Opportunity Coordinator	DA
GEIS, LAWRENCE R. B.S., United States Naval Academy	Assistant to the President for Business and Industry Relations	DA
GENTRY, ROBERT B., JR. B.S., M.A., University of Tennessee at Knoxville	Division Chairman, Communications and Humanities	KC
GESELL, RICHARD C. M.A.T., Rollins College; J.D., University of Wisconsin at Madison	Business	SC
GIBSON, LOIS D. B.S., Tuskegee Institute; M.S., Boston University; Ed.D., Nova University	Director, Nursing	NC
GIMBEL, RICHARD W. A.B., Princeton University; M.A., Middlebury College	Humanities	NC
GIRARDEAU, MATILDA L. B.S., North Carolina College; M.A.T., University of North Carolina at Chapel Hill	Biological Science	NC
GLEIM, JAMES K. A.B., Indiana University; M.A., Georgetown University; Ph.D., University of Pennsylvania	Physical Science	KC
GOLIGHTLY, THELMA E. A.B., Mary Baldwin College; M.A., University of Wisconsin at Madison	Communications	NC
GOOCH, ANN M. B.M.E., Florida State University; M.Ed., University of Florida	Humanities	NC
GRANLUND, ROY D. B.S., Jacksonville University; M.Ed., University of Florida	Mathematics	SC
GRANT, ALICE W. A.B., M.Litt., University of Pittsburgh; Certificate in African Studies, Northwestern University	Developmental Education	NC
GRANT, ANTONIA M. B.A., Florida A & M University; M.A., Florida State University	Communications	SC

GRAY, HORTENSE W. B.A., Fisk University; M.A., Columbia University	Counselor	KC
GREEN, JULIUS C. A.B., University of North Carolina at Chapel Hill	Director, Information Services and Publications	DA
GREEN, KIPTAS L. B.S., Edward Waters College; M.Ed., Florida A & M University	Counselor	DC
GREEN, LAWTON R. B.S., M.A., Florida State University	Philosophy	KC
GREENE, CURTIS P. B.S., M.A., Ball State University	Psychology	NC
GREENMAN, GENE B. Diploma, St. Luke's School of Nursing, Jacksonville, Florida	Nursing	NC
GREER, ELLA M. A.S., Louisburg College; B.S.N., Duke University; M.S., Florida State University	Nursing	NC
GRIFFEY, ELIZABETH BOOTE B.A., Florida State University; M.A., Arizona State University	Communications	SC
GRIFFEY, LARRY R. B.S., M.A., Austin Peay State University	Mathematics	SC
GRIFFIN, MARGARET B.S., M.Ed., University of Florida; Ed.D., Nova University	Assistant Director, Records	DA
GRIFFIN, POPE B.S.P.E., M.P.H., University of Florida; Ed.D., Nova University	Director, Learning Resources	DC
GRIMES, THEODORE R. B.M., Eastman School of Music, University of Rochester; M.L.S., Syracuse University; M.M., University of Tulsa	Librarian	NC
GRISWOLD, ARDIS G. Diploma, St. Alphonsos Hospital School of Nursing, Boise, Idaho	Nursing	NC
GUSKY, FRANK C. A.B., Findlay (Ohio) State College; M.Ed., University of Florida	Social Science	DC
HADWIN, ALICE R. B.A., Saint Mary College, Xavier, Kansas; M.Ed., University of Florida; Ed.D., Nova University	Counselor	NC
HADWIN, DAN W. B.A., Louisiana Tech University; M.Ed., University of Florida; M.Ed., Louisiana State University and Agricultural and Mechanical College; Ed.D., Nova University	Counselor	SC
HALEY, AIMEE C. B.S., Jacksonville University; C.P.A., State of Florida	Accounting Officer	DA
HALL, DOLORES L. B.S., M.Ed., Florida A & M University	Mathematics	NC
HALL, JENE B.S.Ed., Louisiana Tech University; M.A., Louisiana State University and Agricultural and Mechanical College	Mathematics	KC
HALLER, MARTHA A.A., Paducah Community College, Paducah, Kentucky; B.S., University of North Florida	Engineering	SC

**204 / FACULTY AND ADMINISTRATION**

HALLORAN, PAUL	Distributive and Mid-Management Education	KC
B.A., Jacksonville University; M.S., State University of New York Maritime College; Ed.S., University of Florida		
HAMMOND, MARY M.	Reading	DC
B.S., Florida Memorial College; M.Ed., Florida A & M University; Ed.D., Nova University		
HANLEY, JAMES R., JR.	Physical Science	SC
B.S., University of Rhode Island; M.S., University of Illinois		
HANSKNECHT, THOMAS J.	Air Conditioning, Refrigeration and Heating	NC
Vocational Certificate, State of Florida		
HARDIN, PAULA B.	Nursing	NC
Diploma, The Good Samaritan Hospital School of Nursing, Lexington, Kentucky		
HARIMA, HECTOR	Biological Science	KC
B.S., M.S., Ph.D., University of Alabama at Tuscaloosa		
HARMAN, PAULINE J.	Psychology	KC
A.B., Marshall University; B.S., M.S., University of Tennessee at Knoxville		
HARPER, MARY L.	Home Economics	DC
B.S., Florida A & M University; M.S., Florida State University		
HART, SHERMAN C., JR.	Air Conditioning, Refrigeration and Heating	DC
Vocational Certificate, State of Florida; Diploma, Air Conditioning/Refrigeration, Florida Industrial Commission		
HARTNIG, LYNDA	Business	NC
B.S., M.Ed., University of Florida		
HARTSHORN, DAVID L.	Director, Student Financial Aid	KC
B.S., United States Naval Academy; M.A., The George Washington University		
HARTWELL, ROSANNE R.	Director, Personnel Services	DA
B.S., Florida State University; M.Ed., University of Florida		
HASKEW, DONALD C.	Mathematics	SC
B.S.E., Central Arkansas University; M.Ed., University of Arkansas		
HATCHER, HAROLD S.	Business Affairs Officer (DT Campus)	DA
HAYNES, JOHN A.	Psychology	SC
B.A., M.Ed., University of Florida		
HEATH, WILBUR G.	Developmental Education	NC
B.A., Atlantic Christian College; M.A., Appalachian State University		
HEMPHILL, ANNE	Mathematics	KC
B.S., St. Louis University; M.S., Florida State University		
HENDERSON, THOMAS M.	Industrial Electronics	DC
Vocational Certificate, State of Florida		
HENDRICKS, VIRGINIA L.	Humanities	DC
A.B., University of Notre Dame; M.A., Case-Western Reserve University; Ed.D., Nova University		
HERER, SUSAN J.	Dental Hygiene	NC
A.A., B.S., Fairleigh Dickinson University		
HIGHTOWER, JAMES H.	Psychology	DC
B.S., Edward Waters College; M.A., Ph.D., Michigan State University		

HILL, JONATHAN H. B.M., Stetson University; M.Ed., Florida Atlantic University; Ed.D., Nova University	Director, Student Activities	NC
HODGKINS, H.B. B.A., M.Ed., University of Florida	Education	KC
HOLLAND, EDNA A. B.A., M.A.T., Jacksonville University	Communications	SC
HOLLAND, GILBERT W. Vocational Certificate, State of Florida	Major Appliance Repair	DC
HOLMES, BILLIE J. B.S., Edward Waters College; M.Ed., Florida A & M University	High School Credit (Mathematics)	DC
HOLZENDORF, JOYCE G. B.S., Florida A & M University; M.A., North Carolina College at Durham	Social Science	NC
HOOP, IRIS C. B.S., M.S., Indiana State University	Communications	KC
HOUGHTON, MICKIE J. Diploma, St. Luke's Hospital School of Nursing, Jacksonville, Florida; B.S., University of North Florida	Nurse Assistant	NC
HOWARD, MARK S. B.A., M.F.A., Florida State University	Art	SC
HOWARTH, CHESTER D. B.S., Massachusetts State Teachers College; M.S., Florida State University	Director, Distributive and Mid-Management Education	KC
HOWELL, JOHN N. B.S., United States Military Academy; M.A., The George Washington University	Mathematics	KC
HUTCHINGS, PATRICIA W. A.A., Lake City Community College; B.S., M.A., Florida State University	Communications	NC
HUTCHINSON, JOHN M., JR. B.S.M.E., Auburn University; M.S., Ed.S., Florida State University	Engineering	DC
ISRAEL, KENNETH D. B.A., Berea College; M.A., George Peabody College for Teachers; Ph.D., University of Southern Mississippi	Social Science	SC
JACKSON, LUCINDA G. B.S., Edward Waters College; M.Ed., Florida A & M University	Psychology	KC
JACKSON, SAMUEL A.B., Howard University; M.A., Columbia University	Developmental Education	SC
JAMES, RHUDINE M. B.S.N., North Carolina A & T State University; M.S., University of North Carolina at Chapel Hill	Nursing	NC
JAYASWAL, MANINDRA C. B.Sc., Allahabad (India) University; M.S., University of Florida	Chemistry	NC
JENKINS, ETHEL L. A.A., Jacksonville University; B.A., University of Florida; M.A., Appalachian State University; Ed.D., Nova University	Psychology	SC
JOCA, JOHN G. B.S., M.A.Ed., University of Florida	Counselor	DC

206 / FACULTY AND ADMINISTRATION

JOHNSON, FRANK Vocational Certificate, State of Florida	Truck Mechanics	DC
JOHNSON, INEY P. B.S., Jacksonville University; M.Ed., University of Florida	Division Chairman, Mathematics and Sciences	KC
JOHNSON, MARY RUTH B.S., Tennessee Technological University; M.A., Appalachian State University	Counselor	NC
JONES, ALICE E. B.S., Madison (Va.) College, M.S., Florida State University	Librarian-Technical Services	KC
JONES, DAVID Q. B.A., Albion College; M.A., University of Michigan	Social Science	SC
JONES, EDNA M. B.S., Florida State University; M.S.N., University of Alabama	Nursing	NC
JONES, MARVIN M. B.S., M.S., Purdue University	Engineering	DC
KADEN, MAXINE M. B.A., Stetson University; M.Ed., University of Florida	Counselor	DC
KEENAN, HARRY C. B.A., University of Florida	Adult Basic Education	DC
KEHRT, IRENE M. B.A., Hunter College of the City University of New York; M.A., University of Michigan	Physical Education	KC
KELLY, JOSEPH D. B.S.E., M.A.E., Kent State University	Communications	DC
KENNEDY, ROBERT A. A.B., Millsaps College; B.S., University of Alabama; M.A., George Peabody College for Teachers; Ed.D., Florida State University	Humanities	NC
KERLEY, DOUGLAS W. B.M., M.M., Florida State University	Music	SC
KEY, ERSKINE C. B.S., Troy State University; M.S., Ed.D., George Peabody College for Teachers	Social Science	SC
KILGORE, CHARLES F. B.A., Florida Christian College; M.Ed., University of Tennessee at Chattanooga; M.A., Ph.D., Emory University	Social Science	KC
KING, DOROTHY P. B.S., M.Ed., Florida A & M University	Biological Science	SC
KING, GAY D. B.S., Marquette University; M.S., University of Wisconsin at Milwaukee	Dental Hygiene	NC
KING, IONA G. B.S., Edward Waters College	Child Care Services	NC
KING, MABLE P. A.B., Johnson C. Smith University; M.Ed., Florida A & M University	Librarian	DC
KITCHINGS, EARL S. B.S., Florida A & M University; M.A., Columbia University	Dean, Student Development	DC

KOLESAR, JOHN C. B.S., St. Joseph's College, Rennselaer, Indiana; M.S., Southern Illinois University	Physical Science	NC
LA BELLO, ANTHONY J. B.S., St. Francis College; M.Ed., University of North Florida	Mathematics	DC
LAND, MARY ELIZABETH A.B., University of North Carolina at Chapel Hill; M.A., East Carolina University	Music	SC
LANE, ROBERT W. B.S., University of Illinois; M.S., South Dakota School of Mines and Technology	Physical Science	SC
LaPRADE, RAYMOND C. B.S., Florida State University	Engineering	DC
LARKINS, IRIS D. B.S., Edward Waters College; M.Ed., Florida A & M University	Adult Basic Education	DC
LEE, ETHEL R. B.S., Duke University; M.A., Jacksonville University	Nursing	NC
LEE, MAY F. B.S., Edward Waters College; M.A.T., Indiana University	Social Science	NC
LENNERTZ, MILDRED A. B.S.H.E., University of Georgia; M.Ed., University of Mississippi; Ed.D., Nova University	Director, Home Economics Education	KC
LaVASSEUR, MICHAEL LEE B.A., M.A., University of South Florida	Social Science	NC
LEWIS, WARREN LEE A.A., Wilbur Wright Junior College (Chicago); B.S.M.E., Illinois Institute of Technology	Drafting and Related Trades	DC
LILLY, FRANCES H. B.S., M.S., Florida State University	Nursing	NC
LLOYD, ROGER M., JR. B.S., East Tennessee State University; M.S., University of Mississippi	Biological Science	SC
LOCKETT, CORNELIUS R., JR. B.S., M.Ed., Florida A & M University	Director, Developmental Education	DC
LOFTUS, EDSON G. B.A., Jacksonville University; M.A.T., University of Montevallo (Ala.)	Physics	NC
LOFTUS, JOHN R., SR. B.S., Florida State University; M.Ed., A.M.E., University of Mississippi	Director Evening Campus	DC
LONG, BERYL B.S.N.Ed., Florida State University; M.Ed., University of North Florida	Nursing	NC
LUBAS, HELEN S. B.S., M.S., Florida State University	Nursing	NC
LUCAS, WILLIE LEE B.S., Tennessee State University; M.A.L.S., University of Michigan	Librarian	NC
LUCK, CAROLYN E. B.S., M.Ed., University of Florida	Director, Records	DA
LUTZ, JUDITH G. B.A., University of Florida; M.C.Ed., Presbyterian School of Christian Education	Director, Child Care Services	NC

208 /FACULTY AND ADMINISTRATION

LYONS, WILLIAM E., SR. B.A., Harvard University; M.A., University of Florida	Distributive and Mid-Management Education	KC
MAAFO, GLADYS L. B.S., North Carolina College; M.S., University of North Florida	Nursing	NC
MacDONALD, JOHN M. B.S., M.A., East Tennessee State University	Communications	KC
MAHAN, RICHARD M. A.A., Orlando Junior College; B.S., Florida Technological University; M.S., University of Florida	Biological Science	NC
MALLOY, RACHEL H. B.S., Edward Waters College; M.Ed., Florida A & M University	High School Credit	NC
MARTIN, WILLIAM S., JR. B.S., William Carey College; M.A., University of Southern Mississippi	Social Science	SC
MARVES, RAYMOND C. B.S., Georgia Southern Collge; M.S., Florida State University	Accounting	KC
MASSEY, MURPHEY W., JR. B.A., Emory University; Ph.D., University of Georgia	Physical Science	NC
MAYES, JIM L. B.A., M.A., University of Arkansas	Social Science	KC
McBRIDE, LUELLA W. B.S., M.Ed., Florida A & M University; Ed.S., Florida State University	Counselor	SC
McBRIDE, RICHARD B.S., Florida A & M University; M.Ed., Florida State University	Automotive Mechanics	DC
McCLURE, SARAH E. A.S., Florida Junior College at Jacksonville	Medical Assisting	NC
McCOY, PAUL O. B.S., Kansas State Teachers College; M.S., Louisiana State University and Agricultural and Mechanical College	Director, Military Programs	KC
McCURLEY, LYNDLE E. B.S.E., Bethel College; M.S.E., Arkansas State University	Physical Education	SC
McDONALD, MARYANNA S. B.S.C., M.Ed., University of Mississippi	Counselor	KC
McDOWELL, DONALD P. B.S., M.S., University of Southern Mississippi	Director, Occupational Education Projects	DC
McELREATH, SUSAN D. A.B., Wesleyan College; M.S., Georgia State University	Biological Science	NC
McFARLAND, BILL W. B.A., M.A., University of Arkansas; Ed.S., Florida State University	Director, Student Activities	DC
McGRATH, WILLIAM F. B.S.E.E., United States Naval Postgraduate School; B.S.M.E., Auburn University; M.A.T., Jacksonville University	Mathematics	SC
McGRATH, WILLIAM T. B.B.C., University of Florida	Engineering Technology	DC

McKINNON, MARVA A.A., Edward Waters College; B.S., Florida A & M University; M.B.A., University of North Florida	Director, Special Federal Programs	DC
McMILLAN, PAUL M. B.A., M.A., East Texas State University	Social Science	NC
MELLIN, HARRY S. B.S., Purdue University; M.A., Ball State University	Mathematics	KC
MERRIAM, CHARLES S. B.S., M.S., Florida State University	Dean, Occupational Education	KC
MILEY, VERONA B.S., Stetson University; M.A., Appalachian State University	Counselor	KC
MILLER, KERMIT C. B.A., M.Ed., Ph.D., University of Mississippi	Provost	KC
MILLER, LILLIAN W. B.S., East Carolina University; M.S., Ph.D., Purdue University	Biological Science	SC
MILLS, ERIC R., JR. B.S.A., University of Florida; M.B.A., University of Mississippi; Ed.S., Ed.D., University of Florida	District Dean, Occupational and Adult-Continuing Education	DA
MOLENDIA, JOSEF L. B.A., M.A., Marquette University	Communications	KC
MONTS, LARRY H. B.S., Newberry Collge; M.A., George Peabody College for Teachers	Physical Education	KC
MOORE, C. SUE B.S.P.E., M.A., University of Mississippi	Speech and Drama	SC
MORAN, EMMA L. B.S., West Virginia State University; M.A., New York University	Business	SC
MORELAND, HENRY L. B.S., Pembroke (N.C.) State University; M.S., Purdue University; Ed.D., University of Mississippi	Psychology	KC
MORRIS, JOSEPH W. A.A., Chipola Junior College; B.A., M.S., Florida State University; Ed.S., University of Florida	Social Science	KC
MOSS, BEVERLY C. B.S., Western Carolina University; M.A., Duke University	Psychology	NC
MULLINS, JOHN Q. B.S., M.S., University of Tennessee at Knoxville	Biological Science	SC
MUNDELL, RALPH P. Vocational Certificate, State of Florida	Welding	NC
MURRAY, BOBBIE L. B.S., Florida State University; M.S.E., University of North Carolina at Chapel Hill	Physical Science	KC
MURRAY, CHARLES L. B.S., M.Ed., University of Florida	Accounting	SC
MURRAY, RUDOLPH Vocational Certificate, State of Florida	Welding	DC
MYERS, JAMES R. B.A., Jacksonville University; M.S., Ed.S., Florida State University	Dean, Occupational Education	DC



**210 /FACULTY AND ADMINISTRATION**

MYERS, JOYCE E. B.S.N., M.N., Emory University	Nursing	NC
NAPIER, EDGAR C. B.S., William Carey College; M.C.S., Ed.D., University of Mississippi	Provost	DC
NELSON, GREGORY B. B.S., Jacksonville University; M.S., Florida Institute of Technology	Business	SC
NesSMITH, WILLIAM C. B.S., M.Ed., University of Florida	Social Science	NC
NICHOLSON, ROSE M. A.A., Santa Fe Community College; A.S., St. Johns River Junior College; B.S., University of Florida; M.B.A., University of North Florida	Business	SC
NORRIS, JAMES S. B.A., Pennsylvania State University; M.A.T., Jacksonville University	Business	NC
OGILVIE, SARA L. A.B., Wesleyan College; M.Ln., Emory University	Librarian	KC
OLSON, SHARON L. B.S., Northern Michigan University; M.A., Western Michigan University	Biological Science	NC
ORR, ROBERT H. B.S., Bethune-Cookman College; M.B.A., Atlanta University	Business Related	NC
ORTH, JAMES R. Vocational Certificate, State of Florida	Welding	DC
OWEN, HAROLD JAMES, JR. B.A., M.A., State University of New York at Albany; Ph.D., University of Georgia	Vice President for Campus Operations	DA
PAASCHE, HELEN D. Diploma, St. Luke's Hospital School of Nursing, Jacksonville, Florida	Surgical Technician	NC
PADGETT, WAYNE R. B.S., M.A., Austin Peay State University; Ed.S., Ed.D., University of Florida	Social Science	KC
PARK, ALLEN G. B.S., University of Georgia; M.A., University of Alabama at Tuscaloosa	Mathematics	KC
PARSONS, PERCY L. B.S., M.Ed., Florida A & M University	Counselor	DC
PATTERSON, ELISE B.S., Massachusetts State College at Salem; M.A., Clark University, Worcester, Massachusetts	Business	KC
PATTERSON, GERALD R. B.S., M.A., University of Kentucky	Counselor	NC
PATTON, JON W. B.A., Jacksonville University; M.A., University of Tennessee at Knoxville	Humanities	NC
PELOUS, JOAN P. A.A., Florida Junior College at Jacksonville; B.A.E.; M.Ed., University of North Florida	Home Economics	KC
PEREZ, RICARDO D.J., University of Havana, Cuba; M.A., Ph.D., University of Florida	Spanish	SC
PERRY, DONNA C. A.A., A.S., Gulf Coast Community College; B.S., Florida State University; M.S., University of Florida	Nursing	NC

PERRY, ROBERT A. Vocational Certificate, State of Florida	Gasoline Engine Repair	DC
PETERSEN, PHILLIP L. B.S., University of Florida; M.A., Northeast Missouri State University	Biological Sciences	SC
PETERSON, JOHN W. B.A., Florida Atlantic University; M.A., Appalachian State University; M.Ed., Florida Atlantic University	Director, Learning Resources	SC
PINE, SUE C. B.A., North Texas State University; M.A., University of Utah	Communications	SC
PLYMALE, JOHN R. B.A., Marshall University; M.S., University of Alabama	Biological Sciences	SC
POLLARD, R. MICHAEL B.A., M.A.T., Jacksonville University	Humanities	SC
POWELL, JOSEPH R. B.A., St. Bernard College, Cullman, Alabama; M.C.S., University of Mississippi	Biological Science	NC
POWERS, STEPHEN E., IV B.A., Rollins College; B.A., Southern Missionary College; M.A.T., Andrews University, Berrien Springs, Michigan	Mathematics	SC
POYTHRESS, TRAVIS R. Vocational Certificate, State of Florida	Steel Fabrication	DC
PREUSS, DOROTHY M. B.A., University of Northern Colorado; M.Ed., Oregon State University	Director, Student Activities	SC
PRICE, STEWART W. A.A., Florida Junior College at Jacksonville; B.A., M.Ed., University of North Florida; Ed.S., Florida State University	Construction Electricity	DC
PRIEST, MARY D. Diploma in Accounting, Massey Business College, Jacksonville, Florida; Vocational Certificate, State of Florida	Cosmetology	KC
PROBST, RICHARD F. B.A., M.S., Florida State University	Economics	KC
PUCKETT, KENNETH L., JR. B.S., M.S., Florida State University	Librarian	DC
RAINEY, ROBERT R., JR. B.A., Carson-Newman College; M.A., East Tennessee State University	Psychology	SC
RAULERSON, MARIAN P. B.A., Clarke College, Dubuque, Iowa; M.A., Loyola University (Chicago); Ed.D., Nova University	Mathematics	SC
RAY, RUTH G. B.S., Tuskegee Institute; M.A., Hampton Institute	Counselor	KC
READ, KAREN B.A.E., University of Florida; M.Ed., Memphis State University	Communications	SC
REED, ELIZABETH C. B.A., State College of Arkansas; M.A., University of Arkansas	Communications	SC
REED, CHARLES E., JR. B.A., State College of Arkansas; M.A., University of Florida	Communications	SC

212 / FACULTY AND ADMINISTRATION

REESE, RUTH C. A.B., Hunter College of the City University of New York; M.Ed., University of Florida	Home Economics	KC
REHKOPF, WENDELL P. B.S., Michigan State University; M.Ed., University of Florida	Business	DC
RESPESS, RICHARD D. B.I.E., Georgia Institute of Technology; M.S., Florida State University	Mathematics	DC
REYNOLDS, FRED C. A.A., St. Johns River Junior College; B.A., M.Ed., University of Florida	Communications	SC
RICE, RAY C. B.S., Lander College	Home Economics	KC
RICHARDSON, SARAMAE S. B.S., Florida A & M University; M.A., Teachers College, Columbia University	Mathematics	NC
ROBBINS, GAY S. B.A., Centre College of Kentucky; M.A.T., Rollins College	Communications	KC
ROBERTSON, DONALD P. B.A., Rensselaer Polytechnic Institute; M.B.A., University of North Florida	Data Systems Officer	DA
ROBERTSON, RICHARD D. B.S., Syracuse University; M.B.A., The George Washington University	Data Processing	NC
ROBINSON, CHRISTINE M. B.S., Savannah State College; M.A., University of Michigan	Developmental Mathematics	KC
ROBISON, PATRICK L. B.A., M.A., Western Kentucky University	Counselor	NC
ROEY, HOWARD C. B.S., Jacksonville University; M.A., Appalachian State University	Physical Education	NC
ROGERS, ROY V. Vocational Certificate, State of Florida	Sheet Metal	DC
RORER, SALLY M. B.A., Lynchburg College; M.S., University of Tennessee at Knoxville	Physical Education	NC
ROSSIE, A. NEWMAN B.A., M.A., Mississippi State University	Social Science	SC
ROURKE, ANNE B. B.A., Jacksonville University; M.A., University of Florida	Reading	DC
RUPP, KEITH C. Vocational Certificate, State of Florida	Welding	NC
RUSSELL, CARETA R. B.S., Savannah State College; M.Ed., Florida A & M University	Communications	SC
RUSSOS, MILTON A. A.A., Indian River Community College; B.A., M.Ed., University of Florida; Ed.D., Nova University	Director, Student Activities	KC
RUTLEDGE, AUSTIN M., JR. B.A., Stetson University	Business Affairs Officer (Kent Campus)	DA
SAARE, E. JOHN B.S., Bradley University; M.A., University of Florida	Special Project Coordinator	KC

SAFFY, EDNA B.A., M.Ed., Ph.D., University of Florida	Communications	SC
SANFORD, ROBERT M. B.A., M.A., University of Florida	Dean, Academics	KC
SASSER, JOSEPH H. B.A., Jacksonville University; M.A., Florida State University	Social Science	KC
SCHENKEL, GILBERT J. B.S.F., University of Florida; M.S., Florida State University	Director, Evening Programs	NC
SCHICK, FRANK J. B.S., Auburn University; M.A., University of Alabama	Counselor	KC
SCHOMBERG, ORVILLE C. B.S., Colorado State University; M.S., Oklahoma State University; M.A., Colorado State College	Psychology	KC
SCHROEER, HOWARD J. B.S., Mankato State College; M.Ed., University of Florida; Ph.D., University of Alabama at Tuscaloosa	Business Affairs Officer (District)	DA
SCHUPP, JAMES F. B.F.A., Nebraska State Teachers College; M.A., University of Denver	Division Chairman, Fine Arts and Humanities	SC
SCOTT, DORIS B.S., M.S., Florida A & M University	Counselor	NC
SCOTT, WILLIAM, JR. B.S., Florida A & M University; M.A., Columbia University; Ed.D., Nova University	Dean, Adult-Continuing Education	SC
SEITNER, ALFRED J. A.B., Dartmouth College; M.C.S., Amos Tuck School of Business Administration, Dartmouth College	Distributive and Mid-Management Education	KC
SESSIONS, BETTYE J. B.A., Florida A & M University; M.A.T., Jacksonville University	Humanities	KC
SHANKLIN, MARY E. B.S., University of Florida; M.S., Florida State University	Business	DC
SHANNAHAN, MARY K. B.S., D'Youville College; M.N., University of Florida	Nursing	NC
SHANNON, MARY L. B.A., University of Florida; M.Ed., College of William & Mary in Virginia	Communications/Humanities	DC
SHARMA, CHANDRA P. B.S., M.S., Agra (India) University; Ph.D., University of Minnesota	Physical Science	DC
SHEA, LOUISE C. A.B., B.S., College of St. Rose, Albany, New York; M.A., Teachers College, Columbia University	Nursing	NC
SHEPPARD, L. WILLIAM B.S., M.S., Florida State University	Criminal Justice	SC
SHERIDAN, CHARLES L. A.B., Elon College; M.A., University of North Carolina at Chapel Hill	Biological Science	KC

214 / FACULTY AND ADMINISTRATION

SHORE, ANNE C. B.A., M.Ed., Texas A & M University; Ed.D., University of Florida	Developmental Reading/English	DC
SIMMONS, BRENDA B.A., Bethune-Cookman College; M.A., Atlanta University	Communications	NC
SIMMONS, MARY F. B.S., Jacksonville University; M.S., Florida State University	Librarian	DC
SIMONI, PATRICIA F. C.D.A., American Dental Assistant Association	Dental Assisting	NC
SINGH, RAM G. B.A., M.A., Government College, India; M.S., Punjab University; Ph.D., University of Florida	Physics	NC
SINGLETARY, EVA K. Diploma, The Watts Hospital School of Nursing, Durham, North Carolina	Nursing	NC
SINGLETARY, RICHARD J. B.A., Jacksonville University; M.A., Southern Illinois University	Humanities	KC
SISK, FAYE A. B.A., Agnes Scott College, Decatur, Georgia; M.T., Emory University	Medical Laboratory Technology	NC
SMITH, GERALDINE B.A., Florida A & M University; M.A., University of Mississippi	Developmental English/Communications	KC
SMITH, KENNETH M. B.S., Angelo State University, San Angelo, Texas; M.S., Montana State University	Biological Science	NC
SMITH, MARIE D. B.A., Jacksonville University; M.A., University of Florida	French	SC
SMITH, CLAUDE J., JR. A.B., Birmingham Southern College; M.A., University of Alabama at Tuscaloosa	Communications	SC
SNEED, ANNIE B. Diploma, Brewster Methodist Hospital School of Nursing, Jacksonville, Florida	Nursing	NC
SPEARS, JACKSON L. B.S., Bowling Green College of Commerce; M.B.A., University of North Florida	Business Affairs Officer (South Campus)	DA
STANDBERRY, JOHN L., JR. Vocational Certificate, State of Florida	Brick and Blocklaying	DC
STANLEY, JOHN G., JR. B.A., M.A.T., Jacksonville University	Director, Evening Programs	SC
STEGALL, CARROLL R. B.S., Maryville College, Tennessee; M.Div., Columbia Theological Seminary; M.A., Florida State University	Humanities	KC
STEIN, STANLEY W. A.B., University of Florida; M.A., New York University	Psychology	SC
STEWART, JANE H. B.A., M.Ed., Memphis State University	Counselor	SC
STEWART, SARA L. B.A., Florida A & M University; M.A., New York University	Communications	NC
STONER, JESSIE E. B.S., Florida State University; M.A., Memphis State University	Physical Education	SC

STORES, PATRICIA A.S., Florida Junior College at Jacksonville; B.S., Jacksonville University	Nursing	NC
STUCKMAN, JEFFREY A. B.S., M.A., Ohio State University; Ed.D., University of Florida	Director, Institutional Research	DA
STUDEBAKER, GENE H. B.S., Roanoke College	Criminal Justice	SC
STUKE, JOHN H. Vocational Certificate, State of Florida	Auto Mechanics	DC
SUMMERS, COLLIER S. B.A., University of South Florida; M.A., Appalachian State University; Ed.D., Nova University	Counselor	SC
SUMNER, JOHNNY G. B.S., M.A., University of Southern Mississippi	Engineering	DC
SYLER, JOYCE ANN A.S., Florida Junior College at Jacksonville; B.A., University of North Florida	Nursing	NC
TAYLOR, DONNA H. B.S., Radford College; M.S., Virginia Polytechnic Institute and State University	High School Credit (Home Economics)	DC
TAYLOR, EVA L. B.S., Florida Technological University	Respiratory Therapy	NC
TAYLOR, JON T. B.S., Virginia Polytechnic Institute and State University; M.A., Appalachian State University; Ph.D., Florida State University	Communications	NC
TAYLOR, WILLIAM L.	Procurement Officer	DA
TERRELL, C. ROLAND B.S., Troy State University; M.A., Ed.D., University of Alabama at Tuscaloosa	Director, Educational Program Development	DA
THOMAS, BILLY E. Vocational Certificate, State of Florida	Carpentry	DC
THOMAS, FRANCES P.	Executive Director, District Services	DA
THOMPSON, CAMILLA P. B.S., Florida A & M University; M.Ed., University of North Florida	Physical Science	KC
THOMPSON, DONALD E. B.A., Wayland Baptist College; M.M., Florida State University	Music	SC
THOMPSON, KENNETH W. A.B., Dartmouth College; M.B.S., University of Colorado	Mathematics	NC
THOMSON, ALEXANDER Vocational Certificate, State of Florida	Welding	DC
TIDWELL, RUTHINE B.A., Benedict College; M.S., Florida State University	Social Science	SC
TOUCHTON, REGINALD F. B.A., M.Ed., University of Florida; Ed.D., Nova University	Division Chairman, Communications, Social Science and Developmental Education	NC
TRAPP, JACQUELYN D. B.S., University of Georgia; M.S., Florida State University	Medical Laboratory Technology	NC

TRAUTMANN, PAUL C. B.A., M.A., University of Alabama at Tuscaloosa	Director, Business Education and TV Instruction	DC
ULLOA, DERBY L. B.A., M.A., Florida State University	Art	SC
VESSELS, SHIRLEY T. B.B.A., Georgia State University; M.B.A., University of Houston	Business	NC
VOCKELL, FRANK W., JR. B.A., Miami University, Miami, Ohio; M.S., University of Cincinnati	Biological Science	KC
VonDOLTEREN, JOSEPH A. Vocational Certificate, State of Florida	Automotive Body Repair	DC
WALLACE, JOSEPH R. B.S., East Carolina University; M.A., Appalachian State University	Director, Testing	KC
WARREN, THOMAS A. B.S., M.S., Florida State University; C.P.A., State of Florida	Business	KC
WATKINS, LLOYD G. B.S., Jacksonville University; M.Ed., University of Florida; Ed.D., Nova University	Director, Community Services	NC
WATSON, ROBERT L. B.S., Georgia Institute of Technology; M.B.A., Stanford University	Vice President for Administrative and Business Services	DA
WATTRON, THEODORE N. A.B., Anderson College, Indiana; M.A., Ohio State University	Social Science	NC
WEAVER, BILLY R. B.A., M.T., Northeastern State College, Tahlequah, Oklahoma	Division Chairman, Social Science, Communications and Individualized Studies	SC
WEBB, MARYALICE B.S., Jacksonville University; M.S.L.S., A.M.L.S., Florida State University	Director, Program Development	KC
WELMAN, GEORGE A. B.A.E.E., Louisiana State University and Agricultural and Mechanical College	Engineering	DC
WEST, FELICIA E. B.S., Stetson University; M.Ed., Ed.D., University of Florida	Division Chairman, Natural Science, Mathematics and Physical Education	SC
WETHERELL, RONALD G. A.B., M.A., Western Kentucky University	Art	SC
WHITE, SYLVIA F. B.M., B.M.E., Jacksonville University; M.S., M.M., Florida State University	Humanities	KC
WHITEHEAD, KENNETH B.S., M.A., East Tennessee State University	Communications	NC
WIESENFELD, LAURA A. B.S., University of Kentucky; M.Ed., University of Florida; Ed.D., Nova University	Director, Medical Laboratory Technology	NC
WILLIAMS, BEULAH A.S., Florida Junior College at Jacksonville; B.S., University of North Florida	Nursing	NC
WILLIAMS, BILLY F., JR. B.S., University of Florida	Radio & Television Repair	NC

WILLIAMSON, WALTER E. B.A., Millsaps College; M.Div., Emory University; M.A., University of South Florida; Th.D., Luther Rice Seminary	Social Science	SC
WILSON, JACK L. A.B., University of Chattanooga; M.S., Florida State University	Social Science	KC
WILSON, LEROY B. A.B., University of Pennsylvania; M.A., The George Washington University	Communications	SC
WILSON, RICHARD L., II B.S., Florida Memorial College; M.Ed., Florida A & M University	Counselor	DC
WISE, STEPHEN R. B.S., Florida Southern College; M.Ed., Middle Tennessee State University; Ed.D., University of Alabama at Tuscaloosa	Director, Resource Development	DA
WISNER, JERRY J. B.S., M.A., Tennessee Technological University; M.A., University of Tennessee	Psychology	NC
WOFFORD, ROBERT B.S., Edward Waters College; M.A., Western Kentucky University	Director, Adult Basic Education	NC
WOLFORD, LARRY D. B.A., M.A., Appalachian State University	Counselor	SC
WOLFSON, ALBERT I. B.S., Jacksonville University; C.P.A., State of Florida	Business	NC
WOLSON, WILLIAM J. A.A., Palm Beach Junior College; B.A., M.A., Florida State University	Social Science	KC
WOOLARD, LUCIEN W. Vocational Certificate, State of Florida	Welding	DC
WORDEN, DWIGHT G. A.B., M.A., Ph.D., The George Washington University	Psychology	SC
WRIGHT, JUDITH B. Diploma, Piedmont Hospital School of Nursing, Atlanta, Georgia	Nursing	NC
WRIGHT, PETER B., JR. B.S., Newberry College; M.A., George Peabody College for Teachers; Ed.D., Nova University	Dean, Adult-Continuing Education	NC
WRIGHT, SARA R. A.B., Florida A & M University; M.A.T., Jacksonville University	Developmental Education	KC
WYGAL, BENJAMIN R. B.A., Texas Tech University; M.A., Ph.D., University of Texas at Austin	President	DA
WYLLY, SUSAN A.A., Marjorie Webster Junior College; B.S., University of Georgia; M.S.T., Georgia Southern College	Art	SC
YOUREE, JOHN T. B.S.E., Henderson (Ark.) State College; M.S., University of Arkansas	Biological Science	NC





WYLLI-K. RUSAN  
A. J. H. H. H. H. H.  
C. 1939  
CORRECTION JOHN T.  
B. E. H. H. H. H.

# ALPHABETICAL INDEX TO COURSE DESCRIPTIONS BY INSTITUTIONAL COURSE PREFIXES AND NUMBERS

OLD INSTIT. NUMBER	NEW CCNS NUMBER	COURSE TITLE	PAGE NUMBER
AAC 160	(ACC 1009)	General Accounting I	90
AAC 161	(ACC 1029)	General Accounting II	90
AAC 260	(ACC 2001)	Principles of Accounting I	90
AAC 261	(ACC 2021)	Principles of Accounting II	90
AAC 262	(ACC 2109)	Intermediate Accounting I	90
AAC 263	(ACC 2129)	Intermediate Accounting II	90
AAC 280	(ACC 2409)	Cost Accounting	90
AAC 281	(ACC 2509)	Federal Tax Course—Tax Accounting	90
ADS 261	(ADV 2000)	Advertising	90
AIC 283	(ETM 2610C)	Air Conditioning & Heating	104
AIO 161	(ATF 1010)	Ground School—Private Pilot	94
AIO 162	(ASC 1001)	Introduction to Aviation/Aerospace	94
AIO 167	(ATT 1110)	Ground School III—Commercial Pilot	94
AIO 168	(ATT 1120)	Ground School IV—Instrument Pilot	94
ANA 205	(ZOO 2713C)	Comparative Anatomy	137
ANA 215	(APB 2190C)	Human Anatomy & Physiology I	91
ANA 216	(APB 2191C)	Human Anatomy & Physiology II	91
ANT 210	(ANT 2956)	Introduction to Anthropology (Overseas Study)	91
ANT 220	(ANT 2410)	Cultural Anthropology	91
ANT 230	(ANT 2511)	Physical Anthropology	91
APA 161	(MKA 1402)	Fashion Merchandising I	112
APA 162	(MKA 1403)	Fashion Merchandising II	112
APA 260	(MKA 2364)	Fashion Merchandising Practicum/Seminar I	112
APA 261	(MKA 2366)	Fashion Merchandising Practicum/Seminar II	112
APA 262	(MKA 2367)	Fashion Merchandising Practicum/Seminar III	112
APC 291	(SES 2335)	Business Communications	136
APD 101	(ART 1100C)	Crafts as an Element of Design	91
APD 102	(ART 1101C)	Crafts as an Element of Design (Evening)	91
APD 120	(ARTA 1201C)	Design I	91
APD 121	(ARTA 1202C)	Design II	91
APD 122	(ARTB 1201C)	Design I (Evening)	91
APD 123	(ARTB 1202C)	Design II (Evening)	91
APD 230	(ARTA 2110C)	Ceramics: Hand-Building I	92
APD 231	(ARTA 2111C)	Ceramics: Hand-Building II	92
APD 232	(ARTA 2112C)	Ceramics: Wheel Throwing I	92
APD 233	(ARTA 2113C)	Ceramics: Wheel Throwing II	92
APD 234	(ARTA 2115C)	Glaze Exploration	92
APD 240	(ARTB 2110C)	Ceramics: Hand-Building I (Evening)	92
APD 241	(ARTB 2111C)	Ceramics: Hand-Building II (Evening)	92
APD 280	(ARTA 2400C)	Printmaking I	92
APD 281	(ARTA 2401C)	Printmaking II	92
APM 061	(MTB 0013)	Introduction to Technical Math	113
APM 141	(QMB 1001)	Business Mathematics	132
APM 160	(MTB 1321)	Technical Math I	113

OLD INSTIT. NUMBER	NEW CCNS NUMBER	COURSE TITLE	PAGE NUMBER
APM 161	(MTB 1322)	Technical Math II	113
APM 164	(MTB 1303)	Engineering Calculations	113
APM 280	(MTB 2323)	Technical Math III	113
ART 101	(ARTA 1300C)	Drawing I	91
ART 102	(ARTA 1301C)	Drawing II	92
ART 105	(ARTB 1300C)	Drawing I (Evening)	92
ART 106	(ARTB 1301C)	Drawing II (Evening)	92
ART 110	(ARH 1000)	Art Appreciation	91
ART 211	(ARH 2050)	Art History I	91
ART 212	(ARH 2051)	Art History II	91
ART 231	(ARTA 2510C)	Painting I	92
ART 232	(ARTA 2520C)	Painting II	93
ART 233	(ARTB 2510C)	Painting I (Evening)	93
ART 234	(ARTB 2520C)	Painting II (Evening)	93
AST 110	(AST 1002)	Introduction to Astronomy	94
AST 125	(AST 1022L)	Astronomy Laboratory	94
BCN 181	(BCN 1001C)	Building Construction	95
BCN 282	(BCN 2614C)	Planning & Estimating	95
BDP 170	(COC 1300)	Introductory Computer Concepts	97
BDP 171	(CNM 1005)	Data Processing Mathematics	97
BDP 172	(COP 1400)	Basic Assembly Language Programming	98
BDP 173	(CAP 1001)	Data Processing Applications	95
BDP 174	(CRM 1039)	Data Processing Workshop	98
BDP 176	(COP 1160)	RPG Programming	98
BDP 270	(COP 2170)	Basic Programming	98
BDP 272	(CIS 2100)	Data Management Utility Programs	97
BDP 278	(COP 2110)	FORTTRAN Programming	98
BDP 291	(CIS 2321)	Systems Development and Design	97
BDP 293	(COP 2401)	Advanced Assembly Language Programming	98
BDP 295	(COP 2130)	PL/I Programming	98
BDP 296	(COP 2610)	Advanced Computing & Programming Systems	98
BDP 297	(COP 2120)	Basic COBOL Programming	98
BDP 298	(COP 2121)	Advanced COBOL Programming	98
BIO 101	(APB 1150)	Life in its Biological Environment	91
BIO 102	(BSC 1011C)	Principles of Biology	95
BIO 241	(MCB 2013C)	Microbiology	112
BIO 250	(OCB 2602C)	Marine Biology	128
BIO 260	(ZOO 2450)	Ichthyology & Commercial Fishing	137
BLC 210	(AMH 2571)	Afro-American History and Culture I	90
BLC 220	(AMH 2572)	Afro-American History and Culture II	90
BOT 101	(BOT 1010C)	Botany	95
BOT 201	(BOT 2140C)	Field Botany of Vascular Plants	95
BUN 100	(MAN 1392)	Postal Management-Customer Service I	110
BUN 101	(MAN 1394)	Postal Management-Finance I	110
BUN 102	(MAN 2395)	Postal Management-Mail Processing I	110
BUN 200	(MAN 2393)	Postal Management-Customer Service II	110
BUN 201	(MAN 2398)	Postal Services Management-Labor Relations	111
BUN 202	(MAN 2397)	Postal Management-Employee Relations (Personnel)	111
BUN 203	(MAN 2394)	Postal Management-Finance II	110
BUN 204	(MAN 2396)	Postal Management-Mail Processing II	111
BUW 260	(BUL 2111)	Business Law	95
BUW 261	(BUL 2112)	Business Law	95
CED 150	(COA 1100)	Consumer Decisions	97
CGC 161	(CHD 1220)	Child Growth & Development I	96
CGC 162	(CHD 1230)	Child Growth & Development II	97
CGC 163	(EEC 1001)	Introduction to Early Childhood Education	102
CGC 164	(EEC 1201)	Overview of Early Childhood Curriculum I	102

OLD INSTIT. NUMBER	NEW CCNS NUMBER	COURSE TITLE	PAGE NUMBER
CGC 169	(EEC 1202)	Overview of Early Childhood Curriculum II . . . . .	102
CGC 290	(EDG 2940)	Observing and Recording Child Behavior . . . . .	101
CGC 292	(EDG 2941)	Supervised Student Participation . . . . .	101
CHE 100	(CHM 1020)	Chemistry for Liberal Arts . . . . .	97
CHE 101	(CHM 1034C)	Introductory Chemistry . . . . .	97
CHE 102	(CHM 1035C)	Introductory Chemistry . . . . .	97
CHE 110	(CHM 1041C)	General Chemistry and Qualitative Analysis I . . . . .	97
CHE 111	(CHM 1042C)	General Chemistry and Qualitative Analysis II . . . . .	97
CHE 220	(CHM 2210C)	Organic Chemistry I . . . . .	97
CHE 221	(CHM 2211C)	Organic Chemistry II . . . . .	97
CIN 101	(FIL 1505)	Film as Art . . . . .	105
CIT 180	(ETC 1321L)	Surveying . . . . .	102
CLT 171	(CTE 1401)	Basic Textiles . . . . .	99
CLT 172	(CTE 1310)	Basic Clothing Construction . . . . .	98
CLT 173	(CTE 1340)	Advanced Clothing Construction . . . . .	99
CLT 174	(CTE 1402)	Advanced Textiles . . . . .	99
CLT 175	(CTE 1350)	Tailoring I . . . . .	99
COM 202	(RTV 2001)	Introduction to Broadcasting . . . . .	134
COM 207	(CRW 2020)	Imaginative Writing . . . . .	98
COR 160	(CCJ 1440)	Administration of Correctional Institutions . . . . .	95
COR 161	(CCJ 1300)	Introduction to Corrections . . . . .	95
COR 260	(CCJ 2340)	Introduction to Behavior Modification . . . . .	96
COR 265	(CCJ 2933)	Introduction to Special Problems in Corrections . . . . .	96
COR 280	(CCJ 2310)	Correctional Custody, Jails, and Detention . . . . .	96
COR 281	(CCJ 2330)	Probation, Pardons, and Parole . . . . .	96
COR 285	(CCJ 2360)	Introduction to Contemporary Practices in Corrections . . . . .	96
COS 205	(MMC 2100)	Writing for Mass Communications . . . . .	113
DEA 170	(DEA 1020)	Preclinical Orientation . . . . .	99
DEA 171	(DEA 1000)	Introduction to Practice . . . . .	99
DEA 174	(DES 1102)	Dental Materials & Laboratory . . . . .	101
DEA 176	(DEA 1100)	Science for Dental Assistants . . . . .	99
DEA 195	(DES 1200C)	Dental Radiology . . . . .	101
DEA 290	(DEA 2800)	Clinical Practice I . . . . .	99
DEA 291	(DEA 2801)	Clinical Practice II . . . . .	99
DEA 295	(DEA 2210)	Office Management . . . . .	99
DEA 296	(DEA 2802)	Clinical Practice III . . . . .	99
DEA 297	(DEA 2803)	Clinical Practice IV . . . . .	99
DEH 160	(DEH 1000C)	Principles of Dental Hygiene . . . . .	99
DEH 164	(DEH 1701)	Dental Health . . . . .	99
DEH 165	(DES 1000C)	Oral Anatomy . . . . .	101
DEH 166	(DES 1201C)	Dental Radiology . . . . .	101
DEH 168	(DEH 1001)	Clinical Dental Hygiene I . . . . .	99
DEH 182	(DEH 1802C)	Clinical Dental Hygiene II . . . . .	99
DEH 183	(DES 1100C)	Dental Materials and Assisting . . . . .	101
DEH 283	(DEH 2600)	Periodontics . . . . .	100
DEH 284	(DEH 2930)	Dental Hygiene Seminar I . . . . .	101
DEH 285	(DEH 2702)	Community Dental Health . . . . .	100
DEH 286	(DEH 2931)	Dental Hygiene Seminar II . . . . .	101
DEH 287	(DEH 2101)	Oral Histology & Embryology . . . . .	99
DEH 288	(DEH 2303)	Pharmacology . . . . .	100
DEH 289	(DEH 2401)	Oral Pathology . . . . .	100
DEH 290	(DEH 2804C)	Clinical Dental Hygiene III . . . . .	101
DEH 291	(DEH 2806C)	Clinical Dental Hygiene IV . . . . .	101
DRA 101	(THE 1000)	Introduction to Theatre . . . . .	136
DRA 221	(THE 2925)	Drama Practicum . . . . .	136
DTG 160	(ETD 1645C)	Mechanical and Electrical Drafting . . . . .	102

OLD INSTIT. NUMBER	NEW CCNS NUMBER	COURSE TITLE	PAGE NUMBER
DTG 170	(ETD 1100C)	Engineering Drawing . . . . .	102
DTG 171	(EGN 1130C)	Descriptive Geometry . . . . .	102
DTG 280	(ARC 2120C)	Architectural Drafting . . . . .	91
DTG 281	(ETD 2121C)	Civil Drafting . . . . .	102
DTG 282	(ETI 2440)	Industrial Design . . . . .	104
ECO 210	(ECO 2013)	Principles of Economics I . . . . .	101
ECO 211	(ECO 2023)	Principles of Economics II . . . . .	101
ECO 220	(ECO 2000)	Foundations of the American Economy . . . . .	101
ECY 201	(PCB 2030)	The Ecological Crisis . . . . .	129
ECY 202	(PCB 2033C)	Environmental Perspective (Overseas) . . . . .	129
EDU 101	(EDF 1005)	Introduction to Education . . . . .	101
ELS 270	(COC 2307)	Computer Concepts . . . . .	97
ELS 280	(ETE 2633C)	Computer Logic Circuits . . . . .	103
EME 160	(EMT 1101)	Basic Emergency Medical Technology . . . . .	102
EME 170	(EMT 1185C)	Fundamentals of Emergency Medical Care I . . . . .	102
EME 260	(EMT 2208)	Fundamentals of Emergency Medical Care II . . . . .	102
EME 270	(EMT 2287)	Advanced Emergency Medical Technology . . . . .	102
EME 280	(EMT 2806)	Practicum in Emergency Medical Technology . . . . .	102
ENG 100	(ENC 1005)	Introduction to Composition . . . . .	102
ENG 101	(ENC 1103)	English Composition I . . . . .	102
ENG 102	(ENC 1136)	English Composition II . . . . .	102
ENG 161	(REA 1305)	Developmental Reading . . . . .	132
FAR 111	(FAD 1230)	Dynamics of Modern Living . . . . .	104
FCR 163	(BAN 1210)	Analyzing Financial Statements . . . . .	94
FCR 168	(BAN 1700)	Financing Business Enterprise . . . . .	94
FCR 181	(BAN 1110)	Principles of Bank Operation . . . . .	94
FCR 182	(BAN 1100)	The Banking Starter Series . . . . .	94
FCR 184	(BAN 1160)	Bank Letters and Reports . . . . .	94
FCR 240	(FIN 2100)	Personal Finance . . . . .	105
FCR 260	(FIN 2000)	Principles of Finance . . . . .	105
FCR 262	(BAN 2230)	Bank Investments . . . . .	95
FCR 263	(BAN 2150)	Bank Public Relations and Marketing . . . . .	94
FCR 264	(BAN 2200)	Credit Administration . . . . .	94
FCR 265	(REE 2220)	Home Mortgage Lending . . . . .	133
FCR 266	(BAN 2240)	Installment Credit . . . . .	95
FCR 267	(BAN 2500)	International Banking . . . . .	95
FCR 268	(BAN 2303)	Savings and Time Deposits . . . . .	95
FCR 269	(BAN 2400)	Trust Functions & Services . . . . .	95
FCR 281	(FIN 2230)	Money & Banking . . . . .	105
FCR 283	(BAN 2720)	Bank Management . . . . .	95
FIF 160	(FFP 1000)	Introduction to Fire Science . . . . .	104
FIF 161	(FFP 1100)	Fire Company Organization Procedure . . . . .	104
FIF 162	(FFP 1110)	Fire Operations . . . . .	105
FIF 163	(FFP 1203)	Fundamentals of Fire Prevention . . . . .	105
FIF 260	(FFP 2240)	Fire Investigation . . . . .	105
FIF 261	(FFP 2310)	Fire Codes and Building Construction . . . . .	105
FIF 263	(FFP 2524)	Explosive & Toxic Hazardous Materials . . . . .	105
FIF 264	(FFP 2600)	Fire Fighting Equipment and Apparatus . . . . .	105
FIF 265	(FFP 2660)	Rescue Practices . . . . .	105
FIF 266	(FFP 2500)	Flammable Hazardous Materials . . . . .	105
FIF 267	(FFP 2400)	Fire Fighting Tactics & Strategy . . . . .	105
FMC 175	(SES 1003)	General Office Procedures . . . . .	134
FMC 177	(SES 1324)	Calculating Machines . . . . .	135
FMD 281	(ETI 2681)	Industrial Supervision . . . . .	104
FRE 101	(FRE 1100)	Beginning French I . . . . .	105
FRE 102	(FRE 1101)	Beginning French II . . . . .	105
FRE 210	(FRE 2200)	Intermediate French I . . . . .	105

OLD INSTIT. NUMBER	NEW CCNS NUMBER	COURSE TITLE	PAGE NUMBER
FRE 211	(FRE 2201)	Intermediate French II . . . . .	105
FSM 144	(HUN 1415)	Child Nutrition . . . . .	108
FSM 145	(FSS 1250)	Food & Beverage Service . . . . .	106
FSM 150	(FSS 1004)	Orientation to Food Service Technology . . . . .	105
FSM 152	(HUN 1001)	Principles of Nutrition . . . . .	108
FSM 153	(DIE 1201)	Therapeutic Nutrition . . . . .	101
FSM 154	(FOS 1201)	Sanitation & Safety . . . . .	105
FSM 155	(FSS 1410)	Food Service Equipment/Facility Planning . . . . .	106
FSM 156	(FSS 1201)	Basic Food Preparation . . . . .	106
FSM 157	(FSS 1100)	Menu Design & Food Merchandising . . . . .	105
FSM 158	(FSS 1120)	Food & Beverage Purchasing . . . . .	105
FSM 159	(FSS 1221)	Quantity Food Production . . . . .	106
FSM 173	(FSS 1246)	Baking . . . . .	106
FSM 174	(FSS 1248)	Garde Manger I . . . . .	106
FSM 175	(FSS 1249)	Garde Manger II . . . . .	106
FSM 176	(FSS 1940)	Food Service Practicum I . . . . .	106
FSM 177	(FSS 1941)	Food Service Practicum II . . . . .	106
FSM 250	(FSS 2945)	Food Service Internship . . . . .	107
FSM 252	(FSS 2300)	Supervision & Personnel Management . . . . .	107
FSM 285	(HUN 2511)	Advanced Nutrition . . . . .	108
GEO 110	(GEA 1000)	World Geography . . . . .	107
GEO 220	(GEO 2370)	Conservation of Resources . . . . .	107
GER 101	(GER 1100)	Beginning German I . . . . .	107
GER 102	(GER 1101)	Beginning German II . . . . .	107
GER 210	(GER 2200)	Intermediate German I . . . . .	107
GER 211	(GER 2201)	Intermediate German II . . . . .	107
GEY 101	(GLY 1010)	Physical Geology . . . . .	107
GEY 121	(GLY 1100)	Historical Geology . . . . .	107
GME 161	(MAR 1101)	Salesmanship . . . . .	111
GME 173	(MKA 1303)	Retail Practicum . . . . .	112
GME 174	(MKA 1313)	Retail Practicum . . . . .	112
GME 175	(MAR 1301)	Sales Promotion . . . . .	111
GME 176	(MAR 1151)	Retail Merchandising . . . . .	111
GME 262	(MAR 2220)	Wholesaling . . . . .	111
GME 274	(MKA 2323)	Retail Practicum . . . . .	112
GME 281	(MAR 2012)	Marketing Practices . . . . .	111
GME 283	(MKA 2333)	Retail Practicum . . . . .	112
GRA 121	(ARV 1200)	Theory of Printing Processes . . . . .	93
GRA 122	(ARV 1207)	Theory of Lithographic Processes . . . . .	93
GRA 123	(ARV 1203)	Layout & Design . . . . .	93
GRA 124	(ARV 1260)	Graphic Arts Estimating . . . . .	93
GRA 131	(ARV 1201)	Printing Processes Lab . . . . .	93
GRA 132	(ARV 1209)	Lithographic Processes Lab . . . . .	93
GRA 231	(ARV 2230)	Hand & Machine Composition & Form Makeup . . . . .	93
GRA 232	(ARV 2256)	Letterpress Operation and Lockup . . . . .	94
GRA 233	(ARV 2225)	Cold Type Typesetting & Pasteup . . . . .	93
GRA 234	(ARV 2234)	Camera Operation & Film Processing . . . . .	93
GRA 235	(ARV 2250)	Negative Stripping & Offset Platemaking . . . . .	93
GRA 236	(ARV 2253)	Offset Press Operation . . . . .	93
GRA 237	(ARV 2945)	Practicum . . . . .	94
GRA 251	(ARV 2231)	Advanced Compositional Makeup . . . . .	93
GRA 252	(ARV 2257)	Advanced Letterpress Operation & Lockup . . . . .	94
GRA 253	(ARV 2226)	Advanced Cold Type Typesetting & Pasteup . . . . .	93
GRA 254	(ARV 2241C)	Advanced Camera Operation & Film Processing . . . . .	93
GRA 255	(ARV 2251)	Advanced Stripping & Offset Platemaking . . . . .	93
GRA 256	(ARV 2254)	Advanced Offset Press Operation . . . . .	93
HEF 150	(IND 1010)	Housing & Interior Design . . . . .	108

OLD INSTIT. NUMBER	NEW CCNS NUMBER	COURSE TITLE	PAGE NUMBER
HEN 107	(HES 1000)	Personal & Community Health . . . . .	107
HEN 110	(HES 1400)	Standard First Aid . . . . .	107
HEN 215	(HES 2400)	Standard First Aid & Personal Safety . . . . .	107
HHA 101	(HSC 1000)	Introduction to the Health Professions . . . . .	108
HHA 102	(HSC 1002)	Integrated Health Science . . . . .	108
HIS 101	(EUH 1000)	Western Civilization . . . . .	104
HIS 102	(EUH 1001)	Western Civilization . . . . .	104
HIS 193	(HIS 1907)	Honors Survey of History . . . . .	108
HIS 204	(AMH 2010)	United States History I . . . . .	90
HIS 205	(AMH 2020)	United States History II . . . . .	90
HIS 211	(ASH 2300)	History of the Far East . . . . .	94
HIS 212	(LAH 2000)	History of the Americas . . . . .	109
HIS 254	(AMH 2420)	History of Florida . . . . .	90
HOL 161	(HFT 1000)	Introduction to Hospitality Management . . . . .	107
HOL 162	(FSS 1251)	Restaurant Operations . . . . .	106
HOL 164	(HFT 1250)	Hotel/Motel Operation . . . . .	107
HOL 165	(HFT 1410)	Front Office Management-Hotel/Motel . . . . .	107
HOL 166	(HFT 1270)	Apartment Management . . . . .	107
HOL 264	(FSS 2501)	Food & Beverage Control . . . . .	107
HOL 267	(HFT 2221)	Customer-Personnel Relations . . . . .	107
HOL 271	(HFT 2941)	Internship . . . . .	108
HOL 272	(HFT 2942)	Internship . . . . .	108
HOL 285	(HFT 2700)	Tourism . . . . .	107
HOM 120	(HME 1200)	Home Management . . . . .	108
HUM 203	(HUM 2211)	Western Humanities I . . . . .	108
HUM 204	(HUM 2231)	Western Humanities II . . . . .	108
HUM 205	(HUM 2250)	Western Humanities III . . . . .	108
HUM 213	(HUM 2477)	Mediterranean Humanities . . . . .	108
HUM 214	(HUM 2478)	Northern European Humanities . . . . .	108
HUM 215	(HUM 2450)	American Humanities . . . . .	108
HUM 216	(HUM 2410)	Asian Humanities . . . . .	108
HUM 217	(HUM 2460)	Latin American Humanities . . . . .	108
HUM 282	(HUM 2710)	Fine Arts Field Trip . . . . .	108
IAE 101	(ETG 1201C)	X-Ray Technology I . . . . .	103
IAE 202	(ETG 2202C)	X-Ray Technology II . . . . .	103
IAE 203	(ETG 2203C)	X-Ray Technology III . . . . .	103
IAE 204	(ETG 2204C)	X-Ray Technology IV . . . . .	103
IAE 205	(ETG 2205C)	X-Ray Technology V . . . . .	103
IDS 140	(IDS 1935)	Interdisciplinary Studies Seminar . . . . .	108
IDS 145	(REA 1605)	Study Skill Development . . . . .	132
IDS 150	(SOP 1502)	Dynamics of Behavior . . . . .	136
IDS 151	(STD 1150)	Career Planning . . . . .	136
IEL 160	(ETE 1001)	Fundamentals of General Electricity . . . . .	103
IEL 164	(ETE 1010)	D/C Theory & Circuits . . . . .	103
IEL 165	(ETE 1020)	A/C Theory & Circuits . . . . .	103
IEL 283	(ETE 2121)	Advanced Electronic Circuit Analysis . . . . .	103
IEL 285	(ETE 2101)	Electronics I . . . . .	103
IEL 286	(ETE 2111)	Electronics II . . . . .	103
IEL 287	(ETE 2112)	Electronics III . . . . .	103
IEL 288	(ETE 2141)	Semiconductor Circuit Design . . . . .	103
IEL 289	(ETE 2527)	Electrical-Electronic Control Systems . . . . .	103
INR 230	(INR 2002)	International Relations . . . . .	108
INS 161	(RMI 1030)	Principles of Insurance . . . . .	134
INS 162	(RMI 1210)	Principles of Fire & Allied Lines . . . . .	134
INS 163	(RMI 1200)	Principles of Casualty Insurance & Surety Bonds . . . . .	134
INS 164	(RMI 1110)	Principles of Life Insurance I . . . . .	134
INS 165	(RMI 1280)	Principles of Property Insurance Adjusting . . . . .	134

OLD INSTIT. NUMBER	NEW CCNS NUMBER	COURSE TITLE	PAGE NUMBER
INS 166	(RMI 1160)	Marketing Principles of Life and Health Insurance . . . .	134
INS 167	(RMI 1120)	Principles of Health Insurance . . . . .	134
INS 168	(RMI 1260)	Principles of Insurance and Liability Claims Adjusting .	134
INS 181	(RMI 1432)	Life Company Operations . . . . .	134
INS 183	(RMI 1430)	Legal Aspects of Life Insurance . . . . .	134
INS 281	(RMI 2750)	Life Insurance Accounting . . . . .	134
INS 282	(RMI 2281)	Property Insurance Adjusting . . . . .	134
INS 283	(RMI 2270)	Liability Insurance Adjusting . . . . .	134
INT 120	(RET 1024)	Fundamentals of Respiratory Therapy . . . . .	133
INT 125	(APB 1260)	Cardiopulmonary Anatomy and Physiology . . . . .	91
INT 126	(RET 1414)	Arterial Blood Gases and Pulmonary Function Studies .	133
INT 127	(RET 1264)	Respiratory Therapy Advanced Equipment . . . . .	133
INT 128	(RET 1276)	Respiratory Therapy-Nursing Care . . . . .	133
INT 129	(RET 1244)	Emergenciês and the Respiratory Therapist . . . . .	133
INT 220	(APB 2293)	Pulmonary Pathology . . . . .	91
INT 226	(APB 2650)	Pharmacology for the Respiratory Therapist . . . . .	91
INT 293	(RET 2274L)	Respiratory Intensive Care Practicum I . . . . .	133
INT 294	(RET 2285L)	Respiratory Intensive Care Practicum II . . . . .	134
INT 295	(RET 2273C)	Clinical Seminar in Intensive Respiratory Care I . . . . .	133
INT 296	(RET 2284C)	Clinical Seminar in Intensive Respiratory Care II . . . . .	133
INT 297	(RET 2272)	Respiratory Therapy Clinical Applications . . . . .	133
ISA 170	(ETI 1700)	Industrial Safety . . . . .	104
JOU 101	(JOU 1001)	Introduction to Journalism . . . . .	109
LAE 160	(CCJ 1020)	Introduction to Criminal Justice . . . . .	95
LAE 161	(CCJ 1400)	Police Organization & Administration . . . . .	95
LAE 162	(CCJ 1420)	Police Operations . . . . .	95
LAE 163	(CCJ 1030)	Introduction to Criminal Behavior . . . . .	95
LAE 260	(CCJ 2250)	Constitutional Law—Criminal Law I . . . . .	96
LAE 262	(CJT 2110)	Introduction to Criminalistics . . . . .	97
LAE 264	(CJD 2310)	Police Supervision . . . . .	97
LAE 265	(CCJ 2930)	Seminar in Police Problems . . . . .	96
LAE 266	(CCJ 2230)	Evidence . . . . .	96
LAE 267	(CCJ 2500)	Juvenile Delinquency . . . . .	96
LAE 280	(CCJ 2220)	State & Local—Criminal Law II . . . . .	96
LAE 281	(CJT 2100)	Criminal Investigation . . . . .	97
LAS 122	(LEA 1501)	Laws of Domestic Relations . . . . .	109
LAS 123	(LEA 1001)	Introduction to Legal Technology . . . . .	109
LAS 124	(LEA 1013)	Legal Writing and Research I . . . . .	109
LAS 125	(LEA 1101)	Litigation . . . . .	109
LAS 126	(LEA 1014)	Legal Writing and Research II . . . . .	109
LAS 127	(LEA 1211)	Wills, Trusts, and Probate . . . . .	109
LAS 128	(LEA 1311)	Corporate Law . . . . .	109
LAS 129	(LEA 1601)	Criminal Law . . . . .	109
LAS 130	(LEA 1401)	Law Office Management . . . . .	109
LAS 131	(LEA 1721)	State and Federal Tax Law . . . . .	109
LAS 132	(LEA 1201)	Real Property Law . . . . .	109
LAS 133	(LEA 1151)	Torts . . . . .	109
LIS 201	(LIS 2001)	Use of Books & Libraries . . . . .	109
LIT 200	(LIT 2021)	An Introduction to Literature . . . . .	109
LIT 210	(ENL 2013)	English Literature I . . . . .	102
LIT 211	(ENL 2023)	English Literature II . . . . .	102
LIT 220	(AML 2024)	American Literature I . . . . .	90
LIT 221	(AML 2025)	American Literature II . . . . .	90
LIT 238	(ENG 2160)	Children's Literature . . . . .	102
LIT 240	(LIT 2211)	Great Ideas in World Literature I . . . . .	110
LIT 241	(LIT 2221)	Great Ideas in World Literature II . . . . .	110
LIT 242	(LIT 2332)	Afro-American Literature . . . . .	110



OLD INSTIT. NUMBER	NEW CCNS NUMBER	COURSE TITLE	PAGE NUMBER
LIT 243	(LIT 2310)	The Bible as Literature . . . . .	110
MAG 162	(MAR 1011)	Principles of Marketing . . . . .	111
MAM 282	(MAR 2401)	Sales Management . . . . .	112
MAM 284	(MAR 2131)	Principles of Purchasing I . . . . .	111
MAM 285	(MAR 2132)	Principles of Purchasing II . . . . .	111
MAT 100	(MAT 1002)	Basic Mathematics . . . . .	112
MAT 101	(MGF 1113)	College Mathematics . . . . .	112
MAT 119	(MAT 1024)	Elementary Algebra . . . . .	112
MAT 120	(MAT 1033)	Intermediate Algebra . . . . .	112
MAT 121	(MAC 1104)	College Algebra . . . . .	110
MAT 122	(MAC 1114)	College Trigonometry . . . . .	110
MAT 124	(MAC 1132)	College Algebra & Trigonometry . . . . .	110
MAT 131	(MAC 1311)	Calculus with Analytic Geometry I . . . . .	110
MAT 151	(STA 1014)	Elementary Statistics . . . . .	136
MAT 161	(CNM 1001)	Computer-Oriented Mathematics . . . . .	97
MAT 204	(MAE 2810)	Modern Mathematics for Teachers . . . . .	110
MAT 232	(MAC 2312)	Calculus with Analytic Geometry II . . . . .	110
MAT 233	(MAC 2313)	Calculus with Analytic Geometry III . . . . .	110
MAT 242	(MAP 2302)	Differential Equations . . . . .	111
MET 101	(MET 1001)	Meteorology . . . . .	112
MEY 160	(ETI 1421C)	Engineering Materials & Processes . . . . .	103
MIS 101	(MIS 1000C)	The Army as a Profession . . . . .	112
MIS 102	(MIS 1025C)	The Organization of the Army . . . . .	112
MIS 201	(MIS 2630C)	Application of Military Skills . . . . .	112
MIS 202	(MIS 2300C)	Small Unit Tactical Employment . . . . .	112
MLT 173	(MLS 1010C)	Hematology . . . . .	112
MLT 174	(MLS 1400C)	Medical Microbiology . . . . .	113
MLT 179	(MLS 1022C)	Introduction to Health Technology . . . . .	113
MLT 200	(MLS 2530)	Serology and Blood Banking . . . . .	113
MLT 293	(MLS 2610C)	Clinical Chemistry . . . . .	113
MLT 294	(MLS 2600C)	Principles of Clinical Instrumentation . . . . .	113
MLT 295	(MLS 2802L)	Clinical Practicum I . . . . .	113
MLT 296	(MLS 2803)	Clinical Diagnosis . . . . .	113
MLT 297	(MLS 2804)	Clinical Practicum II . . . . .	113
MTY 280	(ETM 2221)	Elements of Applied Energy . . . . .	104
MTY 281	(ETG 2504C)	Engineering Mechanics . . . . .	103
MTY 285	(ETM 2310)	Fluid Mechanics . . . . .	104
MUS 016	(MUT 1001)	Introduction to Music Theory . . . . .	115
MUS 105	(MUS 1000)	Student Recital . . . . .	115
MUS 112	(MUT 1121)	Music Theory I . . . . .	115
MUS 113	(MUT 1122)	Music Theory II . . . . .	115
MUS 116	(MUC 1301)	Introduction to Electronic Music . . . . .	114
MUS 118	(MUG 1201)	Basic Conducting (Choral) . . . . .	114
MUS 119	(MVKA 2621)	Basic Piano Pedagogy I . . . . .	115
MUS 12A	(MVKA 1011)	Applied Preparatory Piano I . . . . .	122
MUS 12B	(MVVA 1011)	Applied Preparatory Voice I . . . . .	126
MUS 12C	(MVSA 1011)	Applied Preparatory Violin I . . . . .	126
MUS 12D	(MVSA 1012)	Applied Preparatory Viola I . . . . .	125
MUS 12E	(MVSA 1013)	Applied Preparatory Cello I . . . . .	117
MUS 12F	(MVSA 1014)	Applied Preparatory String Bass I . . . . .	123
MUS 12G	(MVBA 1011)	Applied Preparatory Trumpet I . . . . .	124
MUS 12H	(MVBA 1013)	Applied Preparatory Trombone I . . . . .	124
MUS 12J	(MVBA 1014)	Applied Preparatory Baritone I . . . . .	116
MUS 12K	(MVBA 1015)	Applied Preparatory Tuba I . . . . .	125
MUS 12M	(MVWA 1011)	Applied Preparatory Flute I . . . . .	118
MUS 12N	(MVWA 1013)	Applied Preparatory Clarinet I . . . . .	118
MUS 12P	(MVWA 1012)	Applied Preparatory Oboe I . . . . .	120

OLD INSTIT. NUMBER	NEW CCNS NUMBER	COURSE TITLE	PAGE NUMBER
MUS 12Q	(MVWA 1014)	Applied Preparatory Bassoon I	117
MUS 12R	(MVPA 1011)	Applied Preparatory Percussion	121
MUS 12S	(MVKA 1013)	Applied Preparatory Organ I	120
MUS 12T	(MVWA 1015)	Applied Preparatory Saxophone I	122
MUS 12U	(MVSA 1016)	Applied Preparatory Guitar I	119
MUS 12X	(MVOA 1010)	Applied Preparatory (Other) I	121
MUS 12Y	(MVBA 1012)	Applied Preparatory French Horn I	119
MUS 120	(MUE 1440)	String Techniques	114
MUS 121	(MUE 1450)	Woodwind Techniques	114
MUS 122	(MUE 1460)	Brass Techniques	114
MUS 123	(MUE 1470)	Percussion Techniques	114
MUS 13A	(MVKB 1011)	Applied Preparatory Piano II	122
MUS 13B	(MVVB 1011)	Applied Preparatory Voice II	126
MUS 13C	(MVSB 1011)	Applied Preparatory Violin II	126
MUS 13D	(MVSB 1012)	Applied Preparatory Viola II	125
MUS 13E	(MVSB 1013)	Applied Preparatory Cello II	117
MUS 13F	(MVSB 1014)	Applied Preparatory String Bass II	123
MUS 13G	(MVBB 1011)	Applied Preparatory Trumpet II	124
MUS 13H	(MVBB 1013)	Applied Preparatory Trombone II	124
MUS 13J	(MVBB 1014)	Applied Preparatory Baritone II	116
MUS 13K	(MVBB 1015)	Applied Preparatory Tuba II	125
MUS 13M	(MVWB 1011)	Applied Preparatory Flute II	118
MUS 13N	(MVWB 1013)	Applied Preparatory Clarinet II	118
MUS 13P	(MVWB 1012)	Applied Preparatory Oboe II	120
MUS 13Q	(MVWB 1014)	Applied Preparatory Bassoon II	117
MUS 13R	(MVVB 1011)	Applied Preparatory Percussion II	121
MUS 13S	(MVKB 1013)	Applied Preparatory Organ II	120
MUS 13T	(MVWB 1015)	Applied Preparatory Saxophone II	123
MUS 13U	(MVSB 1016)	Applied Preparatory Guitar II	119
MUS 13X	(MVOB 1010)	Applied Preparatory (Other) II	121
MUS 13Y	(MVBB 1012)	Applied Preparatory French Horn II	119
MUS 130	(MVVA 1111)	Class Voice I	116
MUS 131	(MVVB 1111)	Class Voice II	116
MUS 132	(MVKA 1111)	Class Piano I	115
MUS 133	(MVKB 1111)	Class Piano II	115
MUS 134	(MVSA 1116)	Class Guitar I	116
MUS 135	(MVSB 1116)	Class Guitar II	116
MUS 162	(MUN 1130)	Symphonic Band	114
MUS 163	(MUN 1710)	Jazz-Rock Ensemble	115
MUS 164	(MUNA 1310)	College Chorus	115
MUS 165	(MUN 1380)	Community Chorus, Jacksonville Concert Chorale	115
MUS 166	(MUO 1001)	Music Theatre Workshop	115
MUS 167	(MUN 1280)	Community Orchestra	115
MUS 171	(MUNB 1310)	College Chorale	115
MUS 172	(MUN 1410)	String Ensemble	115
MUS 212	(MUT 2126)	Music Theory III	115
MUS 213	(MUT 2127)	Music Theory IV	115
MUS 216	(MUT 2231)	Keyboard Harmony	115
MUS 217	(MUT 2232)	Keyboard Harmony	115
MUS 219	(MVKB 2621)	Basic Piano Pedagogy II	115
MUS 230	(MVVA 2121)	Class Voice III	116
MUS 231	(MVVB 2121)	Class Voice IV	116
MUS 232	(MVKA 2121)	Class Piano III	115
MUS 233	(MVKB 2121)	Class Piano IV	115
MUS 234	(MVSA 2126)	Class Guitar III	116
MUS 235	(MVSB 2126)	Class Guitar IV	116
MUS 140A	(MVKA 1211)	Applied Secondary Piano I	122

OLD INSTIT. NUMBER	NEW CCNS NUMBER	COURSE TITLE	PAGE NUMBER
MUS 140B	(MVVA 1211)	Applied Secondary Voice I	126
MUS 140C	(MVSA 1211)	Applied Secondary Violin I	126
MUS 140D	(MVSA 1212)	Applied Secondary Viola I	125
MUS 140E	(MVSA 1213)	Applied Secondary Cello I	117
MUS 140F	(MVSA 1214)	Applied Secondary String Bass I	123
MUS 140G	(MVBA 1211)	Applied Secondary Trumpet I	124
MUS 140H	(MVBA 1213)	Applied Secondary Trombone I	124
MUS 140J	(MVBA 1214)	Applied Secondary Baritone I	116
MUS 140K	(MVBA 1215)	Applied Secondary Tuba I	125
MUS 140M	(MVWA 1211)	Applied Secondary Flute I	118
MUS 140N	(MVWA 1213)	Applied Secondary Clarinet I	118
MUS 140P	(MVWA 1212)	Applied Secondary Oboe I	120
MUS 140Q	(MVWA 1214)	Applied Secondary Bassoon I	117
MUS 140R	(MVPA 1211)	Applied Secondary Percussion I	122
MUS 140S	(MVKA 1213)	Applied Secondary Organ I	121
MUS 140T	(MVWA 1215)	Applied Secondary Saxophone I	123
MUS 140U	(MVSA 1216)	Applied Secondary Guitar I	119
MUS 140X	(MVOA 1210)	Applied Secondary (Other) I	121
MUS 140Y	(MVBA 1212)	Applied Secondary French Horn I	119
MUS 141A	(MVKB 1211)	Applied Secondary Piano II	122
MUS 141B	(MVVB 1211)	Applied Secondary Voice II	127
MUS 141C	(MVSB 1211)	Applied Secondary Violin II	126
MUS 141D	(MVSB 1212)	Applied Secondary Viola II	125
MUS 141E	(MVSB 1213)	Applied Secondary Cello II	117
MUS 141F	(MVSB 1214)	Applied Secondary String Bass II	123
MUS 141G	(MVBB 1211)	Applied Secondary Trumpet II	124
MUS 141H	(MVBB 1213)	Applied Secondary Trombone II	124
MUS 141J	(MVBB 1214)	Applied Secondary Baritone II	116
MUS 141K	(MVBB 1215)	Applied Secondary Tuba II	125
MUS 141M	(MVWB 1211)	Applied Secondary Flute II	118
MUS 141N	(MVWB 1213)	Applied Secondary Clarinet II	118
MUS 141P	(MVWB 1212)	Applied Secondary Oboe II	120
MUS 141Q	(MVWB 1214)	Applied Secondary Bassoon II	117
MUS 141R	(MVPB 1211)	Applied Secondary Percussion II	122
MUS 141S	(MVKB 1213)	Applied Secondary Organ II	121
MUS 141T	(MVWB 1215)	Applied Secondary Saxophone II	123
MUS 141U	(MVSB 1216)	Applied Secondary Guitar II	120
MUS 141X	(MVOB 1210)	Applied Secondary (Other) II	121
MUS 141Y	(MVBB 1212)	Applied Secondary French Horn II	119
MUS 150A	(MVKA 1311)	Applied Principal Piano I	122
MUS 150B	(MVVA 1311)	Applied Principal Voice I	126
MUS 150C	(MVSA 1311)	Applied Principal Violin I	126
MUS 150D	(MVSA 1312)	Applied Principal Viola I	125
MUS 150E	(MVSA 1313)	Applied Principal Cello I	117
MUS 150F	(MVSA 1314)	Applied Principal String Bass I	123
MUS 150G	(MVBA 1311)	Applied Principal Trumpet I	124
MUS 150H	(MVBA 1313)	Applied Principal Trombone I	124
MUS 150J	(MVBA 1314)	Applied Principal Baritone I	116
MUS 150K	(MVBA 1315)	Applied Principal Tuba I	125
MUS 150M	(MVWA 1311)	Applied Principal Flute I	118
MUS 150N	(MVWA 1313)	Applied Principal Clarinet I	118
MUS 150P	(MVWA 1312)	Applied Principal Oboe I	120
MUS 150Q	(MVWA 1314)	Applied Principal Bassoon I	117
MUS 150R	(MVPA 1311)	Applied Principal Percussion I	121
MUS 150S	(MVKA 1313)	Applied Principal Organ I	120
MUS 150T	(MVWA 1315)	Applied Principal Saxophone I	123
MUS 150U	(MVSA 1316)	Applied Principal Guitar I	119

OLD INSTIT. NUMBER	NEW CCNS NUMBER	COURSE TITLE	PAGE NUMBER
MUS 150X	(MVOA 1310)	Applied Principal (Other) I	121
MUS 150Y	(MVBA 1312)	Applied Principal French Horn I	119
MUS 151A	(MVKB 1311)	Applied Principal Piano II	122
MUS 151B	(MVVB 1311)	Applied Principal Voice II	126
MUS 151C	(MVSB 1311)	Applied Principal Violin II	126
MUS 151D	(MVSB 1312)	Applied Principal Viola II	125
MUS 151E	(MVSB 1313)	Applied Principal Cello II	117
MUS 151F	(MVSB 1314)	Applied Principal String Bass II	123
MUS 151G	(MVBB 1311)	Applied Principal Trumpet II	124
MUS 151H	(MVBB 1313)	Applied Principal Trombone II	124
MUS 151J	(MVBB 1314)	Applied Principal Baritone II	116
MUS 151K	(MVBB 1315)	Applied Principal Tuba II	125
MUS 151M	(MVWB 1311)	Applied Principal Flute II	118
MUS 151N	(MVWB 1313)	Applied Principal Clarinet II	118
MUS 151P	(MVWB 1312)	Applied Principal Oboe II	120
MUS 151Q	(MVWB 1314)	Applied Principal Bassoon II	117
MUS 151R	(MVPB 1311)	Applied Principal Percussion II	122
MUS 151S	(MVKB 1313)	Applied Principal Organ II	120
MUS 151T	(MVWB 1315)	Applied Principal Saxophone II	123
MUS 151U	(MVSB 1316)	Applied Principal Guitar II	119
MUS 151X	(MVOB 1310)	Applied Principal (Other) II	121
MUS 151Y	(MVBB 1312)	Applied Principal French Horn II	119
MUS 160A	(MVKA 1411)	Applied Major Piano I	122
MUS 160B	(MVVA 1411)	Applied Major Voice I	127
MUS 160C	(MVSA 1411)	Applied Major Violin I	126
MUS 160D	(MVSA 1412)	Applied Major Viola I	126
MUS 160E	(MVSA 1413)	Applied Major Cello I	117
MUS 160F	(MVSA 1414)	Applied Major String Bass I	123
MUS 160G	(MVBA 1411)	Applied Major Trumpet I	124
MUS 160H	(MVBA 1413)	Applied Major Trombone I	124
MUS 160J	(MVBA 1414)	Applied Major Baritone I	116
MUS 160K	(MVBA 1415)	Applied Major Tuba I	125
MUS 160M	(MVWA 1411)	Applied Major Flute I	119
MUS 160N	(MVWA 1413)	Applied Major Clarinet I	118
MUS 160P	(MVWA 1412)	Applied Major Oboe I	120
MUS 160Q	(MVWA 1414)	Applied Major Bassoon I	117
MUS 160R	(MVPA 1411)	Applied Major Percussion I	122
MUS 160S	(MVKA 1413)	Applied Major Organ I	121
MUS 160T	(MVWA 1415)	Applied Major Saxophone I	123
MUS 160U	(MVSA 1416)	Applied Major Guitar I	120
MUS 160X	(MVOA 1410)	Applied Major (Other) I	121
MUS 160Y	(MVBA 1412)	Applied Major French Horn I	119
MUS 161A	(MVKB 1411)	Applied Major Piano II	122
MUS 161B	(MVVB 1411)	Applied Major Voice II	127
MUS 161C	(MVSB 1411)	Applied Major Violin II	126
MUS 161D	(MVSB 1412)	Applied Major Viola II	126
MUS 161E	(MVSB 1413)	Applied Major Cello II	117
MUS 161F	(MVSB 1414)	Applied Major String Bass II	123
MUS 161G	(MVBB 1411)	Applied Major Trumpet II	125
MUS 161H	(MVBB 1413)	Applied Major Trombone II	124
MUS 161J	(MVBB 1414)	Applied Major Baritone II	116
MUS 161K	(MVBB 1415)	Applied Major Tuba II	125
MUS 161M	(MVWB 1411)	Applied Major Flute II	119
MUS 161N	(MVWB 1413)	Applied Major Clarinet II	118
MUS 161P	(MVWB 1412)	Applied Major Oboe II	120
MUS 161Q	(MVWB 1414)	Applied Major Bassoon II	117
MUS 161R	(MVPB 1411)	Applied Major Percussion II	122

OLD INSTIT. NUMBER	NEW CCNS NUMBER	COURSE TITLE	PAGE NUMBER
MUS 161S	(MVKB 1413)	Applied Major Organ II	121
MUS 161T	(MVWB 1415)	Applied Major Saxophone II	123
MUS 161U	(MVSB 1416)	Applied Major Guitar II	120
MUS 161X	(MVOB 1410)	Applied Major (Other) II	121
MUS 161Y	(MVBB 1412)	Applied Major French Horn II	119
MUS 240A	(MVKA 2221)	Applied Secondary Piano III	122
MUS 240B	(MVVA 2221)	Applied Secondary Voice III	127
MUS 240C	(MVSA 2221)	Applied Secondary Violin III	126
MUS 240D	(MVSA 2222)	Applied Secondary Viola III	125
MUS 240E	(MVSA 2223)	Applied Secondary Cello III	117
MUS 240F	(MVSA 2224)	Applied Secondary String Bass III	123
MUS 240G	(MVBA 2221)	Applied Secondary Trumpet III	124
MUS 240H	(MVBA 2223)	Applied Secondary Trombone III	124
MUS 240J	(MVBA 2224)	Applied Secondary Baritone III	116
MUS 240K	(MVBA 2225)	Applied Secondary Tuba III	125
MUS 240M	(MVWA 2221)	Applied Secondary Flute III	118
MUS 240N	(MVWA 2223)	Applied Secondary Clarinet III	118
MUS 240P	(MVWA 2222)	Applied Secondary Oboe III	120
MUS 240Q	(MVWA 2224)	Applied Secondary Bassoon III	117
MUS 240R	(MVPA 2221)	Applied Secondary Percussion III	122
MUS 240S	(MVKA 2223)	Applied Secondary Organ III	121
MUS 240T	(MVWA 2225)	Applied Secondary Saxophone III	123
MUS 240U	(MVSA 2226)	Applied Secondary Guitar III	120
MUS 240X	(MVOA 2220)	Applied Secondary (Other) III	121
MUS 240Y	(MVBA 2222)	Applied Secondary French Horn III	119
MUS 241A	(MVKB 2221)	Applied Secondary Piano IV	122
MUS 241B	(MVVB 2221)	Applied Secondary Voice IV	127
MUS 241C	(MVSB 2221)	Applied Secondary Violin IV	126
MUS 241D	(MVSB 2222)	Applied Secondary Viola IV	126
MUS 241E	(MVSB 2223)	Applied Secondary Cello IV	117
MUS 241F	(MVSB 2224)	Applied Secondary String Bass IV	123
MUS 241G	(MVBB 2221)	Applied Secondary Trumpet IV	124
MUS 241H	(MVBB 2223)	Applied Secondary Trombone IV	124
MUS 241J	(MVBB 2224)	Applied Secondary Baritone IV	116
MUS 241K	(MVBB 2225)	Applied Secondary Tuba IV	125
MUS 241M	(MVWB 2221)	Applied Secondary Flute IV	118
MUS 241N	(MVWB 2223)	Applied Secondary Clarinet IV	118
MUS 241P	(MVWB 2222)	Applied Secondary Oboe IV	120
MUS 241Q	(MVWB 2224)	Applied Secondary Bassoon IV	117
MUS 241R	(MVPB 2221)	Applied Secondary Percussion IV	122
MUS 241S	(MVKB 2223)	Applied Secondary Organ IV	121
MUS 241T	(MVWB 2225)	Applied Secondary Saxophone IV	123
MUS 241U	(MVSB 2226)	Applied Secondary Guitar IV	120
MUS 241X	(MVOB 2220)	Applied Secondary (Other) IV	121
MUS 241Y	(MVBB 2222)	Applied Secondary French Horn IV	119
MUS 250A	(MVKA 2321)	Applied Principal Piano III	122
MUS 250B	(MVVA 2321)	Applied Principal Voice III	126
MUS 250C	(MVSA 2321)	Applied Principal Violin III	126
MUS 250D	(MVSA 2322)	Applied Principal Viola III	125
MUS 250E	(MVSA 2323)	Applied Principal Cello III	117
MUS 250F	(MVSA 2324)	Applied Principal String Bass III	123
MUS 250G	(MVBA 2321)	Applied Principal Trumpet III	124
MUS 250H	(MVBA 2323)	Applied Principal Trombone III	124
MUS 250J	(MVBA 2324)	Applied Principal Baritone III	116
MUS 250K	(MVBA 2325)	Applied Principal Tuba III	125
MUS 250M	(MVWA 2321)	Applied Principal Flute III	118
MUS 250N	(MVWA 2323)	Applied Principal Clarinet III	118

OLD INSTIT. NUMBER	NEW CCNS NUMBER	COURSE TITLE	PAGE NUMBER
MUS 250P	(MVWA 2322)	Applied Principal Oboe III	120
MUS 250Q	(MVWA 2324)	Applied Principal Bassoon III	117
MUS 250R	(MVPA 2321)	Applied Principal Percussion III	122
MUS 250S	(MVKA 2323)	Applied Principal Organ III	120
MUS 250T	(MVWA 2325)	Applied Principal Saxophone III	123
MUS 250U	(MVSA 2326)	Applied Principal Guitar III	119
MUS 250X	(MVOA 2320)	Applied Principal (Other) III	121
MUS 250Y	(MVBA 2322)	Applied Principal French Horn III	119
MUS 251A	(MVKB 2321)	Applied Principal Piano IV	122
MUS 251B	(MVVB 2321)	Applied Principal Voice IV	126
MUS 251C	(MVSF 2321)	Applied Principal Violin IV	126
MUS 251D	(MVSF 2322)	Applied Principal Viola IV	125
MUS 251E	(MVSF 2323)	Applied Principal Cello IV	117
MUS 251F	(MVSF 2324)	Applied Principal String Bass IV	123
MUS 251G	(MVBB 2321)	Applied Principal Trumpet IV	124
MUS 251H	(MVBB 2323)	Applied Principal Trombone IV	124
MUS 251J	(MVBB 2324)	Applied Principal Baritone IV	116
MUS 251K	(MVBB 2325)	Applied Principal Tuba IV	125
MUS 251M	(MVWB 2321)	Applied Principal Flute IV	118
MUS 251N	(MVWB 2323)	Applied Principal Clarinet IV	118
MUS 251P	(MVWB 2322)	Applied Principal Oboe IV	120
MUS 251Q	(MVWB 2324)	Applied Principal Bassoon IV	117
MUS 251R	(MVPB 2321)	Applied Principal Percussion IV	122
MUS 251S	(MVKB 2323)	Applied Principal Organ IV	121
MUS 251T	(MVWB 2325)	Applied Principal Saxophone IV	123
MUS 251U	(MVSF 2326)	Applied Principal Guitar IV	119
MUS 251X	(MVOB 2320)	Applied Principal (Other) IV	121
MUS 251Y	(MVBB 2322)	Applied Principal French Horn IV	119
MUS 260A	(MVKA 2421)	Applied Major Piano III	122
MUS 260B	(MVVA 2421)	Applied Major Voice III	127
MUS 260C	(MVSA 2421)	Applied Major Violin III	126
MUS 260D	(MVSA 2422)	Applied Major Viola III	126
MUS 260E	(MVSA 2423)	Applied Major Cello III	118
MUS 260F	(MVSA 2424)	Applied Major String Bass III	123
MUS 260G	(MVBA 2421)	Applied Major Trumpet III	125
MUS 260H	(MVBA 2423)	Applied Major Trombone III	124
MUS 260J	(MVBA 2424)	Applied Major Baritone III	116
MUS 260K	(MVBA 2425)	Applied Major Tuba III	125
MUS 260M	(MVWA 2421)	Applied Major Flute III	119
MUS 260N	(MVWA 2423)	Applied Major Clarinet III	118
MUS 260P	(MVWA 2422)	Applied Major Oboe III	120
MUS 260Q	(MVWA 2424)	Applied Major Bassoon III	117
MUS 260R	(MVPA 2421)	Applied Major Percussion III	122
MUS 260S	(MVKA 2423)	Applied Major Organ III	121
MUS 260T	(MVWA 2425)	Applied Major Saxophone III	123
MUS 260U	(MVSA 2426)	Applied Major Guitar III	120
MUS 260X	(MVOA 2420)	Applied Major (Other) III	121
MUS 260Y	(MVBA 2422)	Applied Major French Horn III	119
MUS 261A	(MVKB 2421)	Applied Major Piano IV	122
MUS 261B	(MVVB 2421)	Applied Major Voice IV	127
MUS 261C	(MVSF 2421)	Applied Major Violin IV	126
MUS 261D	(MVSF 2422)	Applied Major Viola IV	126
MUS 261E	(MVSF 2423)	Applied Major Cello IV	118
MUS 261F	(MVSF 2424)	Applied Major String Bass IV	124
MUS 261G	(MVBB 2421)	Applied Major Trumpet IV	125
MUS 261H	(MVBB 2423)	Applied Major Trombone IV	124
MUS 261J	(MVBB 2424)	Applied Major Baritone IV	116

OLD INSTIT. NUMBER	NEW CCNS NUMBER	COURSE TITLE	PAGE NUMBER
MUS 261K	(MVBB 2425)	Applied Major Tuba IV . . . . .	125
MUS 261M	(MVWB 2421)	Applied Major Flute IV . . . . .	119
MUS 261N	(MVWB 2423)	Applied Major Clarinet IV . . . . .	118
MUS 261P	(MVWB 2422)	Applied Major Oboe IV . . . . .	120
MUS 261Q	(MVWB 2424)	Applied Major Bassoon IV . . . . .	117
MUS 261R	(MVPB 2421)	Applied Major Percussion IV . . . . .	122
MUS 261S	(MVKB 2423)	Applied Major Organ IV . . . . .	121
MUS 261T	(MVWB 2425)	Applied Major Saxophone IV . . . . .	123
MUS 261U	(MVSB 2426)	Applied Major Guitar IV . . . . .	120
MUS 261X	(MVOB 2420)	Applied Major (Other) IV . . . . .	121
MUS 261Y	(MVBB 2422)	Applied Major French Horn IV . . . . .	119
MUY 101	(MUL 1011)	Music Appreciation . . . . .	114
MUY 211	(MUH 2211)	Survey of Music History . . . . .	114
NUR 177	(NUU 1140C)	Nursing Process I-Fundamentals of Nursing . . . . .	128
NUR 270	(NUR 2210C)	Nursing Process II-Medical-Surgical Nursing . . . . .	128
NUR 271	(NUR 2133C)	Nursing Process III A-Nursing Care of the Childbearing Family . . . . .	128
NUR 272	(NUR 2120C)	Nursing Process III B-Nursing Care of Children . . . . .	128
NUR 273	(NUR 2220C)	Nursing Process IV A-Medical-Surgical Nursing Care of the Adult Patient . . . . .	128
NUR 274	(NUR 2310C)	Nursing Process IV B-Psychiatric Nursing . . . . .	128
NUR 29A	(NUR 2242C)	Coronary Care Nursing . . . . .	128
NUR 29B	(NUR 2243C)	Emergency Department Nursing . . . . .	128
NUR 299	(NUR 2240C)	Critical Care Seminar . . . . .	128
OCE 201	(OCE 2005)	Introductory Oceanography . . . . .	128
OCE 261	(OMT 2211)	Theory and Technology of Marine Field Sampling . . . . .	129
OCE 262	(OMT 2223)	Marine Instrumentation . . . . .	129
OCO 100	(COE 1000)	Cooperative Education Seminar . . . . .	98
OCO 101	( 1949)	Cooperative Education Work Experience I . . . . .	98
OCO 201	( 2949)	Cooperative Education Work Experience II . . . . .	98
PED 101	(PEL 1141L)	Archery . . . . .	130
PED 102	(PEL 1346L)	Beginning Badminton . . . . .	130
PED 104	(PEL 1624L)	Advanced Basketball . . . . .	130
PED 106	(PEL 1111L)	Beginning Bowling . . . . .	130
PED 112	(PEL 1121L)	Beginning Golf . . . . .	130
PED 113	(PEM 1226L)	Rebound Tumbling . . . . .	130
PED 114	(PEL 1441L)	Paddle-Racquetball . . . . .	130
PED 114	(PEL 1421L)	Handball . . . . .	130
PED 117	(PEL 1341L)	Beginning Tennis . . . . .	130
PED 118	(PEL 1342L)	Intermediate Tennis . . . . .	130
PED 119	(PEM 1301L)	Track and Field Events . . . . .	130
PED 120	(PEL 1321L)	Volleyball . . . . .	130
PED 122	(PEM 1421L)	Beginning Wrestling . . . . .	130
PED 124	(PEM 1109L)	Circuit Training . . . . .	130
PED 131	(PEN 1121L)	Beginning Swimming . . . . .	131
PED 132	(PEN 1122L)	Intermediate Swimming . . . . .	131
PED 135	(PEN 1113L)	Lifesaving . . . . .	131
PED 139	(PEN 1206C)	Navigation & Small Boat Handling . . . . .	131
PED 141	(PEN 1136C)	Underwater Diving Skills (SCUBA) . . . . .	131
PED 142	(PEM 1441L)	Karate & Self-Defense . . . . .	130
PED 145	(PEM 1101L)	Physical Conditioning for Women . . . . .	130
PED 157	(DAA 1340)	Folk Dance . . . . .	99
PED 158	(DAA 1000)	Recreational Dance . . . . .	99
PED 159	(PEL 1211L)	Softball . . . . .	130
PED 159	(PEL 1511L)	Soccer . . . . .	130
PED 160	(PEL 1041L)	Recreational Games . . . . .	130
PED 161	(PEN 1511L)	Angling . . . . .	131

OLD INSTIT. NUMBER	NEW CCNS NUMBER	COURSE TITLE	PAGE NUMBER
PED 162	(LEI 1200)	Introduction to Recreational Activities . . . . .	109
PED 220	(PEL 2322L)	Advanced Volleyball . . . . .	130
PED 242	(PEM 2442L)	Intermediate Karate & Self-Defense . . . . .	130
PEL 140	(PEO 1040C)	Supervision of Elementary Children at Play . . . . .	131
PEL 200	(PET 2000)	Introduction to Physical Education . . . . .	131
PEL 220	(PEO 2003C)	Sports Officiating . . . . .	131
PHI 201	(PHI 2010)	Introduction to Philosophy . . . . .	132
PHI 210	(PHI 2100)	Introduction to Logic . . . . .	132
PHI 240	(PHI 2600)	Introduction to Moral & Political Philosophy . . . . .	132
PHS 101	(PSC 1341)	Physical Science . . . . .	132
PHS 102	(GLY 1000)	Earth & Space Science . . . . .	107
PHS 105	(ISC 1000)	Unified Science . . . . .	109
PHS 287	(SCE 2416)	Science Institute for Elementary Teachers . . . . .	134
PHY 100	(PHY 1020)	Physics for Liberal Arts . . . . .	132
PHY 201	(PHY 2053C)	General Physics I . . . . .	132
PHY 202	(PHY 2054C)	General Physics II . . . . .	132
PHY 210	(PHY 2048C)	Physics I with Calculus . . . . .	132
PHY 211	(PHY 2049C)	Physics II with Calculus . . . . .	132
POS 204	(POS 2041)	American Federal Government . . . . .	132
POS 205	(POS 2112)	State and Local Government . . . . .	132
POS 220	(CPO 2002)	Introduction to Comparative Government . . . . .	98
PSY 111	(PSY 1012)	General Psychology . . . . .	132
PSY 214	(EDP 2002)	Education Psychology . . . . .	101
PSY 241	(DEP 2004)	Human Growth & Development . . . . .	101
PSY 242	(DEP 2102)	Child Psychology . . . . .	101
PSY 243	(DEP 2302)	Adolescent Psychology . . . . .	101
REL 201	(REL 2300)	World Religions . . . . .	133
REL 210	(REL 2210)	Religious Thought in the Old Testament . . . . .	133
REL 211	(REL 2243)	Religious Thought in the New Testament . . . . .	133
REM 210	(LEI 2330C)	Camp Counseling . . . . .	109
RES 161	(REE 1000)	Real Estate Principles & Practices . . . . .	132
RES 162	(REE 1400)	Real Estate License Law . . . . .	132
RES 163	(REE 1100)	Real Estate Appraisal . . . . .	132
RES 164	(REE 1810)	Real Estate Sales . . . . .	133
RES 281	(REE 2430)	Real Estate Law . . . . .	133
RES 283	(REE 2270)	Mortgage Broker in Mortgage Lending . . . . .	133
RES 285	(REE 2500)	Real Estate Management . . . . .	133
RES 287	(REE 2200)	Real Estate Finance . . . . .	133
RES 289	(REE 2300)	Real Estate Investment . . . . .	133
RUS 101	(RUS 1100)	Beginning Russian I . . . . .	134
RUS 102	(RUS 1101)	Beginning Russian II . . . . .	134
RUS 210	(RUS 2200)	Intermediate Russian I . . . . .	134
RUS 211	(RUS 2201)	Intermediate Russian II . . . . .	134
SAM 160	(GEB 1011)	Introduction to Business . . . . .	107
SAM 250	(MAN 2000)	Principles of Management . . . . .	110
SAM 251	(MAN 2300)	Personnel Management . . . . .	110
SLD 101	(EEX 1000)	Introduction to Exceptional Child Education . . . . .	102
SOC 201	(SOC 2000)	Introductory Sociology . . . . .	136
SOC 210	(SOC 2020)	Social Problems . . . . .	136
SOC 220	(MAF 2200)	Marriage & Family . . . . .	110
SOC 225	(ANT 2310)	Introduction to the North American Indian . . . . .	91
SOP 110	(SOP 1002)	Human Relations . . . . .	136
SPA 101	(SPN 1100)	Beginning Spanish I . . . . .	136
SPA 102	(SPN 1101)	Beginning Spanish II . . . . .	136
SPA 210	(SPN 2200)	Intermediate Spanish I . . . . .	136
SPA 211	(SPN 2201)	Intermediate Spanish II . . . . .	136
SPE 110	(SPC 1010)	Fundamentals of Speech . . . . .	136



OLD INSTIT. NUMBER	NEW CCNS NUMBER	COURSE TITLE	PAGE NUMBER
SPE 233	(SPC 2594)	Intercollegiate Debate	136
SPE 236	(SPC 2511)	Argumentation and Debate	136
SPE 240	(SPC 2420)	Discussion	136
SPE 250	(ORI 2000)	Oral Interpretation	129
SSS 101	(SSI 1110)	Origins of American Society I	136
SSS 102	(SSI 1120)	Origins of American Society II	136
STS 171	(SES 1210)	Beginning Shorthand	135
STS 172	(SES 1211)	Intermediate Shorthand	135
STS 175	(SES 1150)	Introduction to Word Processing	135
STS 176	(SES 1361)	Machine Transcription	135
STS 177	(SES 1221)	Machine Shorthand I	135
STS 270	(SES 2151)	Word Processing-Magnetic Typewriting	135
STS 271	(SES 2222)	Machine Shorthand II	135
STS 272	(SES 2223)	Machine Shorthand III	135
STS 290	(SES 2212)	Advanced Shorthand	135
STS 291	(SES 2213)	Dictation and Transcription	135
STS 292	(SES 2402)	Secretarial Practices	136
STS 295	(SES 2250)	Legal Shorthand	135
STS 296	(SES 2468)	Medical Terminology	136
STT 100	(ETI 1121)	Introduction to Non-destructive Testing	103
STT 101	(ETI 1122)	Non-destructive Testing: Liquid Penetrants and Magnetic Particles	103
STT 282	(ETG 2535C)	Testing & Strength of Materials	103
STT 284	(ETC 2410)	Fabrication Processes	102
TER 281	(ENC 2315)	Technical Report Writing	102
TRA 160	(TRA 1010)	Principles of Transportation	136
TRA 161	(TRA 1032)	Transportation and Traffic Management I	136
TRA 162	(TRA 1100)	Transportation and Traffic Management II	137
TRA 163	(TRA 1033)	Carrier Liability and Claims	137
TRA 164	(TRA 1905)	Independent Study of Transportation	137
TRA 165	(TRA 1420)	Commercial Motor Transportation	137
TRA 167	(TRA 1121)	Rate Clerk	137
TRA 168	(TRA 1230)	Material Handling	137
TRA 263	(TRA 2110)	Transportation and Traffic Management III	137
TRA 264	(TRA 2120)	Transportation and Traffic Management IV	137
TRA 265	(TRA 2311)	Interstate Commerce Law and Practice	137
TRA 266	(TRA 2020)	Economics of Transportation	137
TRA 267	(MAN 2050)	Transportation Management and Theory	110
TRA 281	(TRA 2300)	Interstate Commerce Act I	137
TRA 282	(TRA 2310)	Interstate Commerce Act II	137
TRA 283	(TRA 2312)	Interstate Commerce Act III	137
TRA 284	(TRA 2313)	Interstate Commerce Act IV	137
TYG 162	(SES 1100)	Beginning Typewriting I	135
TYG 174	(SES 1101)	Beginning Typewriting II	135
TYG 175	(SES 1110)	Intermediate Typewriting	135
TYG 285	(SES 2120)	Advanced Typewriting-Executive	135
TYG 286	(SES 2131)	Advanced Typewriting-Legal	135
TYG 287	(SES 2132)	Advanced Typewriting-Medical	135
TYG 288	(SES 2133)	Advanced Typewriting-Technical	135
ZOO 101	(ZOO 1010C)	General Zoology	137

# GENERAL INDEX

	Page(s)		Page(s)
Accelerated High School Program	30	Certificate of Training	139
Accident Reporting	36	Certificate Programs, College Credit	48-49
Accounting Program		CHALLENGE: New Careers for Women	153
Curriculum, AS Degree	51	Chief Administrative Officers	2
Accreditation	1	Child Care Services Program	
Activities, Student	21-22	Curriculum, AS Degree	77
Administrative Officers	2	Curriculum, Certificate	77
Administrators, Listing	195-217	Civil Engineering Technology Program	
Admission Requirements		Curriculum, AS Degree	64
Adult High School	150-151	Curriculum, Certificate	64
College Credit	29-31	Class Attendance	24,35
Non-College Credit	139	Clerical Program	
Adult and Continuing Education Course		Curriculum, Certificate	54-55
Descriptions	183-189	College Credit Information	29-137
Adult and Continuing Education Program(s)	150-155	College Credit Programs	
Adult Basic Education	150	Business Education	51-55
Adult Centers, Evening	7	Distributive Education	56-61
Adult High School Completion	150-152	Engineering and Industrial Related Education	62-69
Advising	11	Health Education	70-76
Affirmative Action Policy	8	Home Economics Education	77-79
Alphabetical Index to Course Descriptions		Public Service Education	80-84
by Institutional Course Prefixes		Common Course Number System	89
and Numbers	219-234	Community Services	153
Appeals, Student	14	Computer Operations Program	
Architectural and Building Construction		Curriculum, Certificate	52-53
Technology Program		Computer Programming Program	
Curriculum, AS Degree	62-63	Curriculum, Certificate	52-53
Curriculum, Certificate	62-63	Concurrent Registration	34-35
Army ROTC	87	Contents, Table of	3
Associate in Arts Degree General		Continuing Education for Women	152-153
Education Requirements	44-46	Continuing Education Units	139-140
Associate in Arts Degree Information	43-46	Coöperative Education Program	85
Associate in Science Degree General		Correspondence or Extension Courses	29
Education Requirements	48	Counseling	11
Associate in Science Degree Programs	51-84	Course Descriptions, College Credit	89-137
Athletics	22	Course Descriptions, Non-College Credit	157-192
Athletic Scholarships	16	Course Load, Maximum	34
Attendance, Policy	24,35	Course Numbering System	89
Audio-Visuals	37	Credit Card Accounts	42
Auditing of Courses	33	Credit Hour	34
Avocational/Recreational Courses, List	191-192	Criminal Justice Education—Corrections Program	
Awards for Program/Course Completion	139-140	Curriculum, AS Degree	80
Banking Program		Criminal Justice Education—Law Enforcement	
Curriculum, AS Degree	56	Programs	
UNF Transfer Option	56	Curriculum, AS Degree	81
Board of Trustees, District	2	Curriculum, Certificate	81
Bookstore Services	36	Curricula	
Business Education Programs	51-55	Associate in Arts Degree	43-46
Business Program, General		Associate in Science Degree	47-48
Curriculum, AS Degree	54	College Credit Certificate	48
Calendar	4	Non-College Credit Occupational Education	
Campus Information	6-7	Studies	149
Campus Locations	1	Adult and Continuing Education Program	150-153
Cancellation of a Course	35,40	Data Processing Program	
Career Development Centers	11	Curriculum, AS Degree	52-53
Career-Personal Testing	11	Dean's List	34
Center for the Continuing Education		Dental Assisting Program	
of Senior Adults	152	Curriculum, Certificate	71
Center for the Continuing Education		Dental Hygiene Program	
of Women	152-153	Curriculum, AS Degree	70
Certificate of Applied Science	139	Developmental Education	
Certificate of Attendance	139	Downtown Campus	85-86

	Page(s)		Page(s)
North Campus	86	General Business Program	
South Campus	86	Curriculum, AS Degree	54
Kent Campus	86	General Education Requirements	
Directory, Faculty and Administration	195-217	Associate in Arts Degree	44-46
Distributive Education Programs	56-61	Associate in Science Degree	48
District Board of Trustees	2	Grade Deadlines	5
District Offices	1.6	Grade Points	34
Downtown Campus	6	Grading System	
Drafting and Design Technology Program		College Credit	33-34
Curriculum, AS Degree	65	Evaluated CEU	149
Drafting Program		High School Credit	151
Curriculum, Certificate	65	Occupational Preparatory Non-College Credit	149
Dropping a Course	40	Graduation Dates	5
Dual Purpose Courses, Definition	89	Graduation Requirements	
Due Process Procedure	13-14	Associate in Arts Degree	43
Early Admission Program	30	Associate in Science Degree	47-48
Electronic Engineering Technology Program		Certificate	48
Curriculum, AS Degree	66	Graduation, with Honors	36
Electronics Program		Grants	18
Curriculum, Certificate	66	Graphic Arts Program	
Emergencies, First Aid	36	Curriculum, AS Degree	68
Emergency Medical Technology Program		Health Education Programs	70-76
Curriculum, AS Degree	72	Health Services	37
Employment of Students	18	High School Admission Requirements	150-151
Engineering and Industrial Related		High School Completion Program	150-152
Education Programs	62-69	High School Equivalency Diploma	152
Enrollment, College Credit Courses	29-31	High School Grading System	151
Enrollment, Non-College Credit Courses	139	High School Testing Program	152
Equality, Policy on	8	History of the College	6
Equal Access/Equal Opportunity	8	Holidays	4
Evening Adult Centers	7	Home Economics Education Programs	77-79
Experience-Based Education	85	Honors Graduation	36
Faculty Listing	195-217	Hospitality Management Program	
Family Education Rights and Privacy Act of 1974	8-9	Curriculum, AS Degree	57
Fashion Merchandising Program		Housing	36
Curriculum, AS Degree	78	Incomplete Grade Deadlines	5
Fees, Graduation	39	Independent Living For Adult Blind (ILAB)	152
Fee Schedule		Index, Alphabetical, to Course Descriptions by	
College Credit	39-40	Institutional Course Prefixes and Numbers	219-234
Non-College Credit	141-148	Insurance, Professional Malpractice	
Fee Waivers		College Credit	39-40
College Credit	40	Non-College Credit	144
Non-College Credit	146-147	Insurance Program	
Fees for Tests	145	Curriculum, AS Degree	58
Fees, Miscellaneous		UNF Transfer Option	58
College Credit	39-40	Intercollegiate Athletics	22
Non-College Credit	141-148	International Applicant	30
Financial Aid	15-19	Job Placement	11
Financial Information		Kent Campus, Fred H.	7
College Credit	39-42	Learning Resources Centers	37
Non-College Credit	141-145	Legal Assistant Program	
Fire Science and Prevention Programs		Curriculum, AS Degree	83
Curriculum, AS Degree	82	Library and Audio-Visual Services	37
Curriculum, Certificate	82	Loans	18
UNF Transfer Option	82	Mechanical Engineering Technology Program	
First Aid, Emergencies	36	Curriculum, AS Degree	67
Food and Vending Service	36	Curriculum, Certificate	67
Food Service Technology Programs		Medical Laboratory Technology Programs	
Curriculum, AS Degree	78-79	Curriculum, AS Degree	73
Curriculum, Certificate	78-79	Curriculum, Certificate	73
Forgiveness Policy	33	Military Service School Credits	35
Foundation, Inc., Florida Junior College at		Mission Statement	8
Jacksonville	19	Non-College Credit Information	139-192
Fred H. Kent Campus	7	Non-College Credit Studies	149-155
GED Examination	152	Non-College Credit Course Descriptions	157-192

	Page(s)		Page(s)
North Campus	6	Sales-Marketing-Retailing Program	
Numbering System, Statewide Course	89	Curriculum, AS Degree	60
Nursing Continuing Education		Semester Hour	34
College Credit	85	Schedule Changes	35,139
Non-College Credit	153	Scholarships	16,18
Nursing, Technical Program		Secretarial Science Program	
Curriculum, AS Degree	75-76	Curriculum, AS Degree	54-55
Objectives of the College	8	Servicemen's Opportunity College	23
Occupational Education Courses, Definition	149	Servicemen's, Veterans' Information	23
Occupational Education, Course Descriptions		Smoking Ban	36
Non-College Credit	157-181	Social Security Information	35
Occupational Education Grading System	149	South Campus	6-7
Occupational Education Programs, Non-College		Special Student Status	30
Credit	149-155	Statewide Course Numbering System	89
Orientation	11	Stenography Program	
Overseas Studies, Summer	86-87	Curriculum, Certificate	54-55
Philosophy Statement	8	Student Activities	21-22
Physical Education	47	Student Appeals	14
Postal Service Management Program		Student Course Load	34
Curriculum, AS degree	84	Student Development	11
Curriculum, Certificate	84	Student Employment	18
Printing/Graphic Arts Program		Student Financial Aid	15-19
Curriculum, AS Degree	68	Student Government Association	22
Program Locations, Campus		Student Rights and Responsibilities	13-14
AS Degree	49	Summer Overseas Studies	86-87
College Credit Certificate	49	Table of Contents	3
Occupational Education,		Technical Nursing Program	
Non-College Credit	154-155	Curriculum, AS Degree	75-76
Adult and Continuing Education	154-155	Testing	37
Public Law 93-380	8-9	Traffic Regulations	36
Public Service Education Programs	80-84	Transcript Requests	
Real Estate Program		College Credit	35
Curriculum, AS Degree	59	Non-College Credit	139
UNF Transfer Option	59	Transfer Students	29-30
Recreational/Avocational Courses	191-192	Transportation Program	
Refund Appeals	14	Curriculum, AS Degree	61
Refunds of Fees	40-41,147-148	UNF Transfer Option	61
Registration Appointments	34	Trustees, District Board of	2
Registration, Concurrent	34-35	Tuition Information	39,141-148
Registration Dates	4	University Parallel Program	43-46
Registration Fees		Veterans' Information	23-28
College Credit	39	Waivers of Fees	
Non-College Credit	141-148	College Credit	40
Regulation Changes	36	Non-College Credit	146-147
Residency Affidavit	31	Withdrawal Procedure	33
Respiratory Therapy Program		Women, Continuing Education Center	152-153
Curriculum, AS Degree	74	X-Ray Engineering Technology Program	
ROTC, Army	87	Curriculum, AS Degree	68-69
Safety & Traffic Control	36		

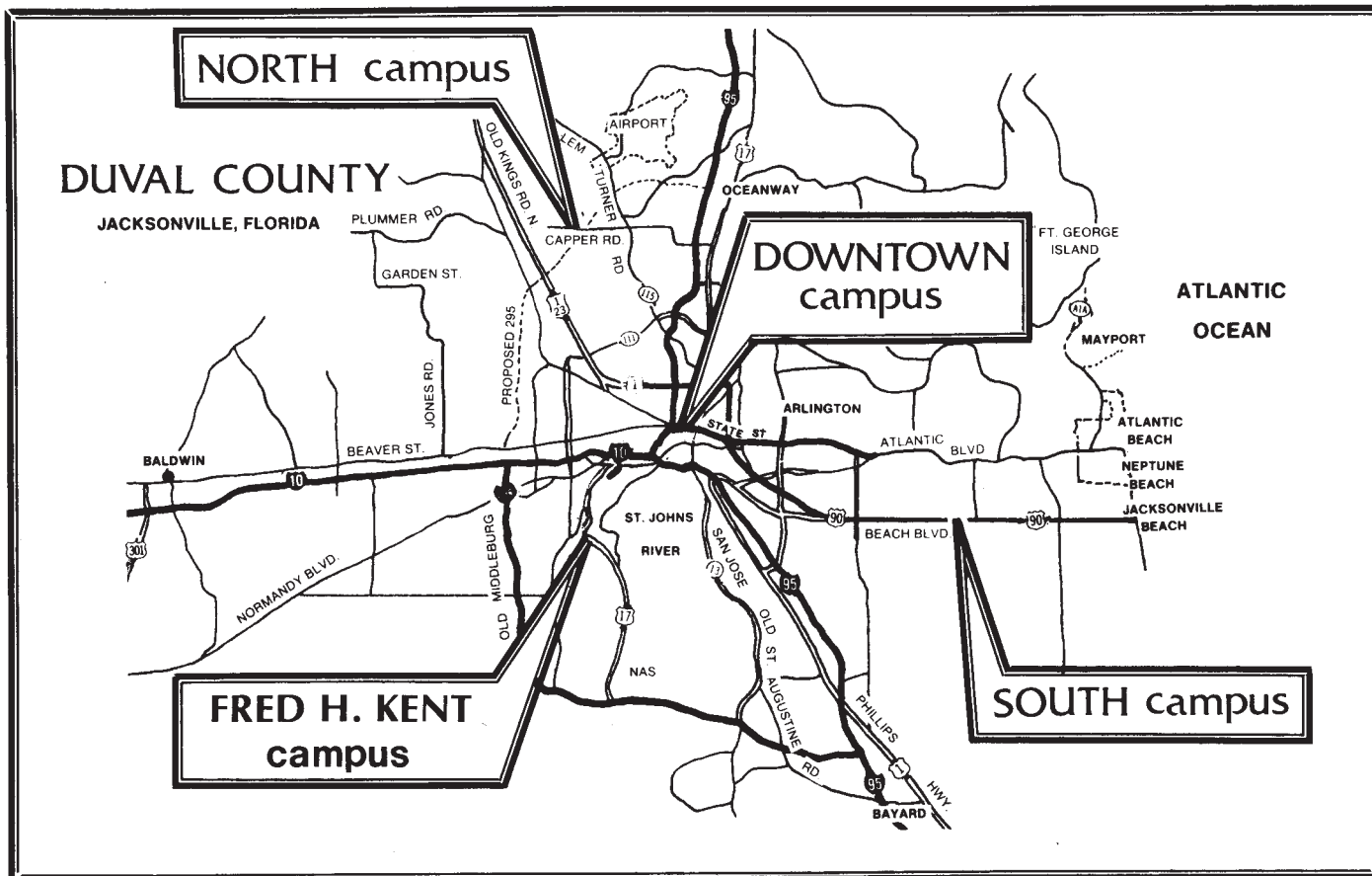
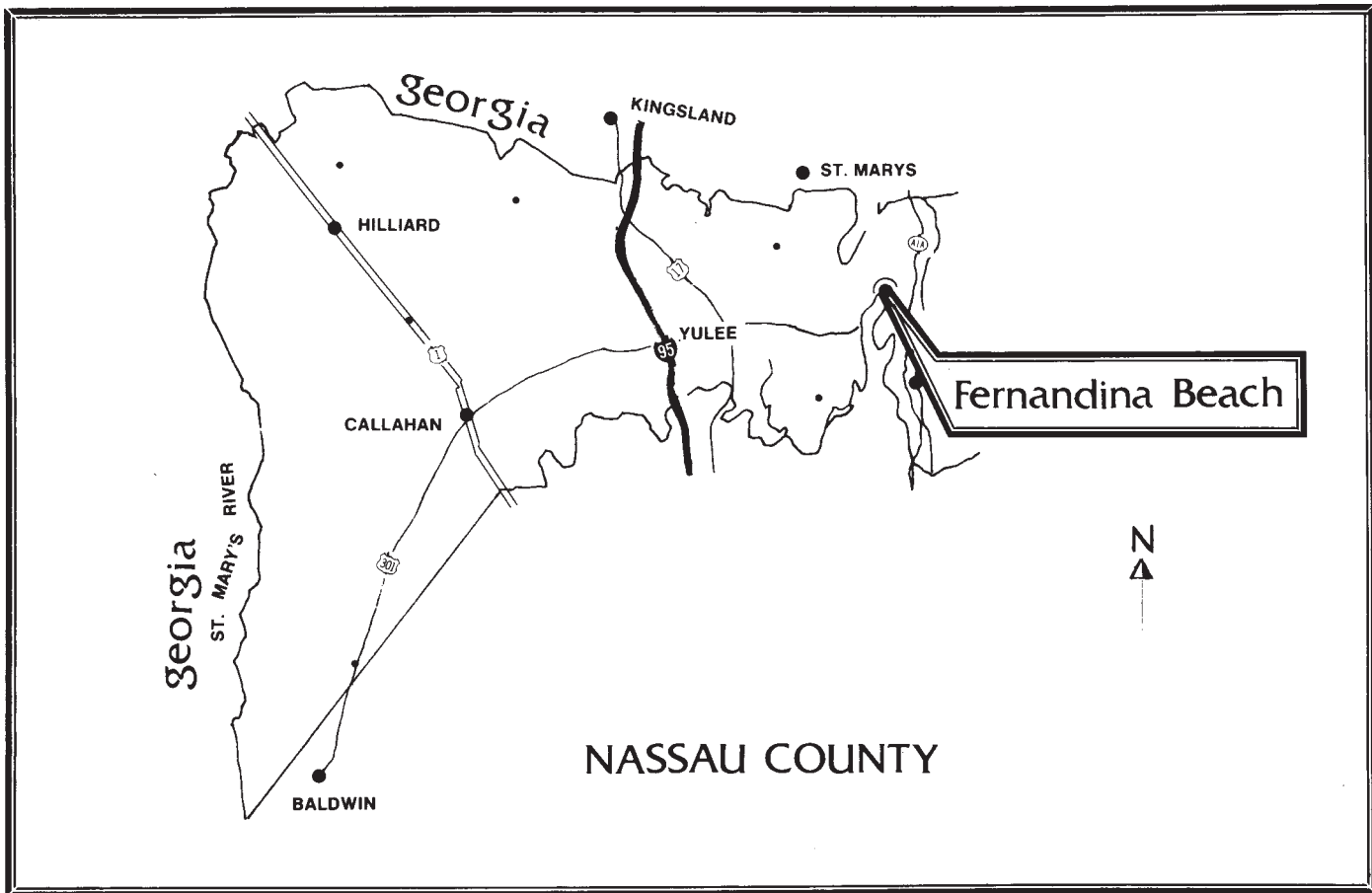
This Page Left  
Intentionally Blank





This Page Left  
Intentionally Blank







Florida Junior College at Jacksonville  
21 West Church Street □ Jacksonville, Florida 32202

